

8'-0" x 14'-0" ANAHEIM TRAFFIC DISTRIBUTION VAULT x 9'-4" DEEP

- NOTES:**
- VAULT DESIGNED IN ACCORDANCE WITH AASHTO H-20-44 TRAFFIC BRIDGE LOADING USING 5,500 PSI [37.92MPa] COMPRESSIVE STRENGTH CONCRETE AND 60,000 PSI [413.2MPa] YIELD STRENGTH ASTM A-706 STEEL REINFORCEMENT PER CALCS. #31008.
 - VAULT TO BE PLACED ON A MIN. 6" BASE OF CRUSHER RUN FOR EASE OF INSTALLATION AND EVEN LOAD DISTRIBUTION.
 - INTERIOR WALLS AND CEILING SHALL BE PAINTED WITH TWO COATS WHITE PAINT. (FRAZEE #410 LATEX OR APPROVED EQUAL).
 - ALL JOINTS SHALL BE GASKETED WATERIGHT.
 - THE FOLLOWING TO BE INSTALLED WITH VAULT:
 - 1 5/8" x 1 5/8" GALV. BOLT ON UNISTRUT x 48" LONG. (24 REQ'D).
 - W/ 1/2" DIA. ROUNDHEAD BOLT & WASHER (72 REQ'D).

ORDERING INFORMATION:
 K814-FV112-163F FOR ASSEMBLY AS SHOWN.
 PER CITY OF ANAHEIM SPEC. CU 1600-3F
 TOTAL WEIGHT OF ASSEMBLY AS SHOWN IS 66,870 Lbs.

GENERAL NOTES:

- Minimum soil bearing capacity is hereby assumed to be 2000 PSF unless otherwise documented by a geotechnical report that shall be provided to Jensen Precast by the end user. Jensen Precast shall not be held responsible for the soil bearing capacity.
- Installation of Manholes, Vaults, Handholes, Meter Boxes etc. will be as per Jensen installation procedures.
- Structural modification to the Jensen line of products is not permitted without prior written approval from Jensen Engineering Department.
- Do not scale the drawings, verify all dimensions including rough openings, if any discrepancies are found, notify the Jensen Engineer immediately.
- The Jensen Engineer will interpret the intent of the drawings in case of possible conflict or discrepancy.
- Permissible Variations:

Dimensional Tolerances — The length, width, height, or dia. measurements of the structure when measured on the inside surfaces shall not deviate form design dimensions by more than the following:

Dimensions: Tolerance:

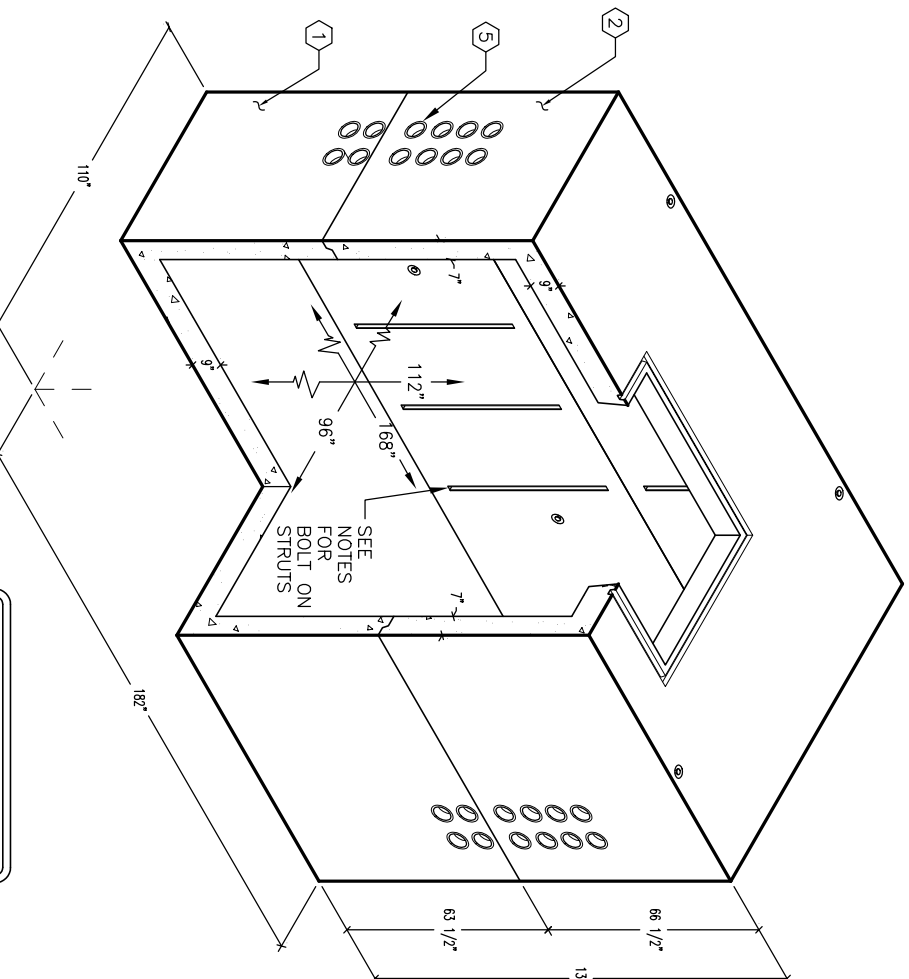
 - 0 to 5 Feet 1/4"
 - 5 to 10 Feet 3/8"
 - 10 to 20 Feet as agreed upon between the supplier and purchaser.

Squareness Tolerance:
 The inside of the precast concrete component shall be square as determined by diagonal measurements. The difference between such measurements shall not exceed the following:

Measured Length: Allowable Difference

 - 0 to 10 Feet 1/2"
 - 10 to 20 Feet 3/4"

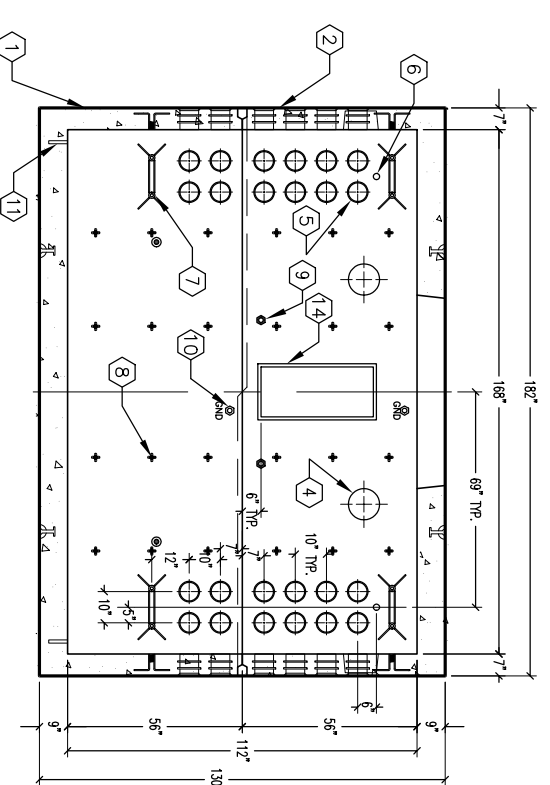
20 Feet and over as agreed upon between the supplier and purchaser.



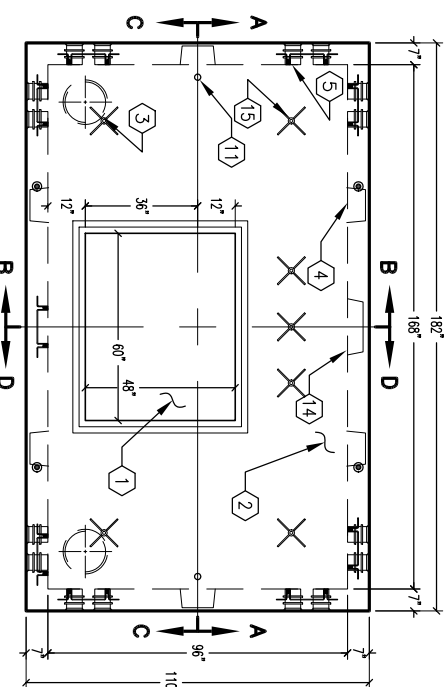
MINIMUM EXCAVATION SIZE:
 10'-2" x 16'-2" x DEPTH REQ'D.

K814-FV112-163F
 PER CITY OF ANAHEIM SPEC. CU 1600-3F

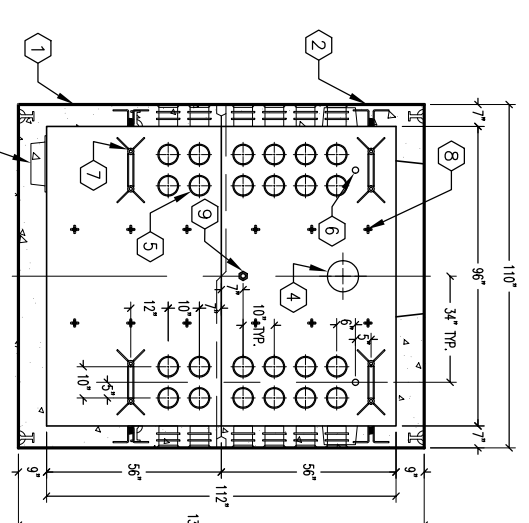
AUTODRAW REL. 14



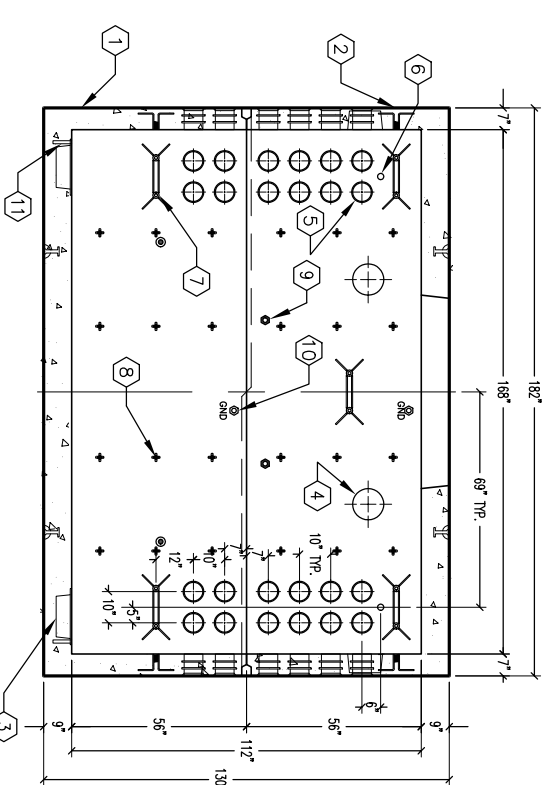
SECTION A-A



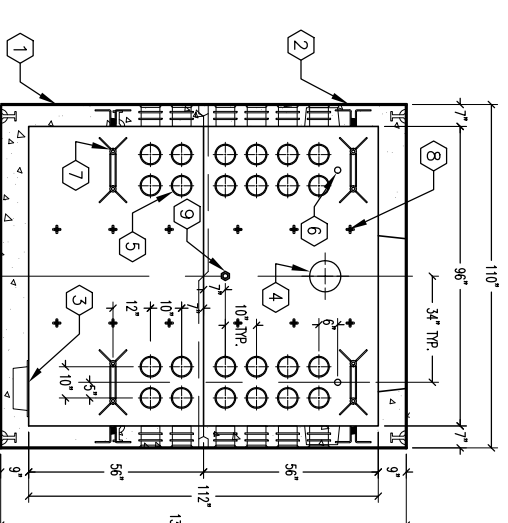
PLAN VIEW



SECTION B-B



SECTION C-C



SECTION D-D

#	DATE	DESCRIPTION	BY

K814-FV112-163F
 PER CITY OF ANAHEIM SPEC. CU 1600-3F

03-01-02

