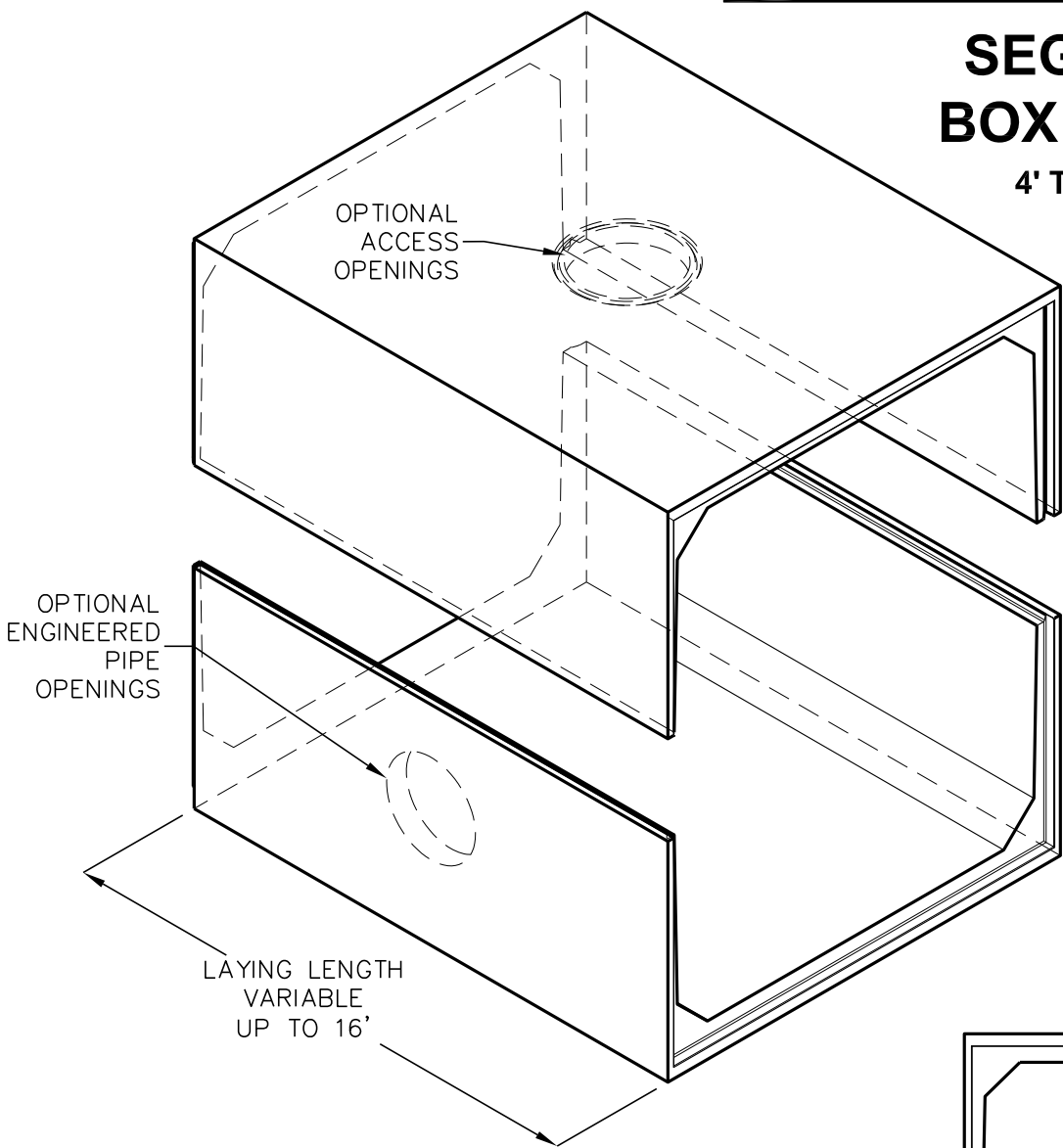
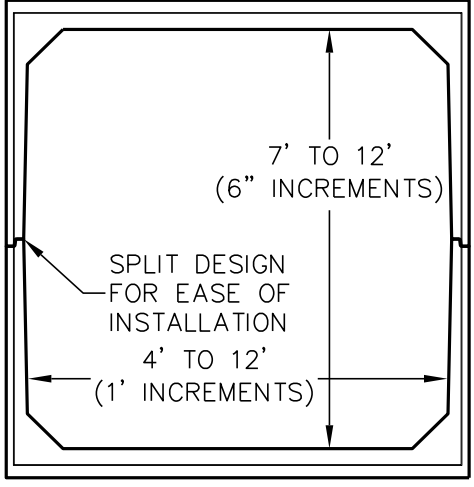
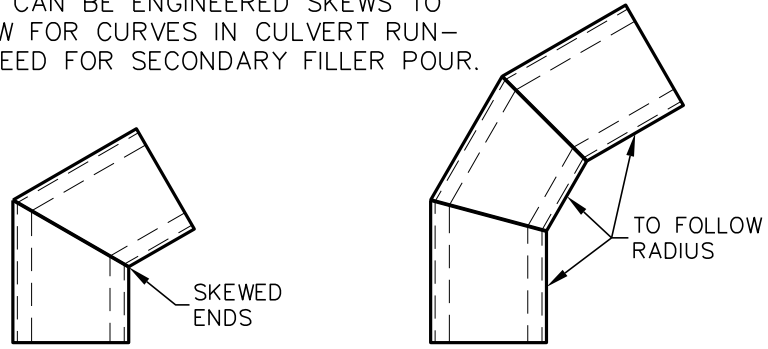


# SEGMENTAL BOX CULVERT

4' TO 12' SPANS  
TYPE 2



ENDS CAN BE ENGINEERED SKEWS TO ALLOW FOR CURVES IN CULVERT RUN—NO NEED FOR SECONDARY FILLER POUR.



STANDARD DESIGNS AVAILABLE MEETING ASTM C1786 HL-93 OR AASHTO HS20 IN ACCORDANCE WITH AASHTO SPECIFICATIONS

DESIGNS BASED ON SPECIAL LOADING OR DEPTHS OF BURY ARE AVAILABLE ON REQUEST. CUSTOM PIPE HOLES, ACCESS OPENINGS, AND SKEWED SECTIONS ARE AVAILABLE. STANDARD HEIGHTS AVAILABLE IN 6" INCREMENTS. CUSTOM HEIGHTS ARE AVAILABLE.

FOR COMPLETE DESIGN AND PRODUCT INFORMATION CONTACT JENSEN PRECAST.

G