

# 6'-0" X 12'-0" COLTON VAULT X 7'-0" DEEP

**NOTES:**

- VAULT DESIGNED IN ACCORDANCE WITH AASHTO H-20-44 TRAFFIC BRIDGE LOADING USING 5,500 PSI [37.92MPa] COMPRESSIVE STRENGTH CONCRETE AND 60,000 PSI [413.2MPa] YIELD STRENGTH ASTM A-706 STEEL REINFORCEMENT PER CALCS. #31094.
- VAULT TO BE PLACED ON A MIN. 6" BASE OF CRUSHER RUN FOR EASE OF INSTALLATION AND EVEN LOAD DISTRIBUTION
- LIMIT OF COVER OVER ROOF SECTION IS 1'-6" TO 4'-0"
- LIMIT OF EMBEDMENT OF BOTTOM SECTION IS 10'-8" TO 13'-2"
- ALL WALLS AND CEILINGS TO BE PAINTED WITH WHITE PAINT
- MARK PRODUCT: -JENSEN PRECAST  
-DATE OF POUR  
-PART NUMBER  
-WEIGHT

**FOLLOWING MATERIALS TO BE SHIPPED WITH VAULT:**

- (a) 1/2" X 6" GALVANIZED "J" BOLTS (4 REQ'D)
- (b) 7/8" X 1 3/4" CONSEAL GASKET (90 FT. REQ'D)

**ORDERING INFORMATION:**

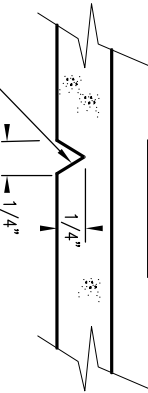
K612-FV84-18 FOR ASSEMBLY AS SHOWN  
PER CITY OF COLTON  
TOTAL WEIGHT OF ASSEMBLY IS 32,190 Lbs.

**GENERAL NOTES:**

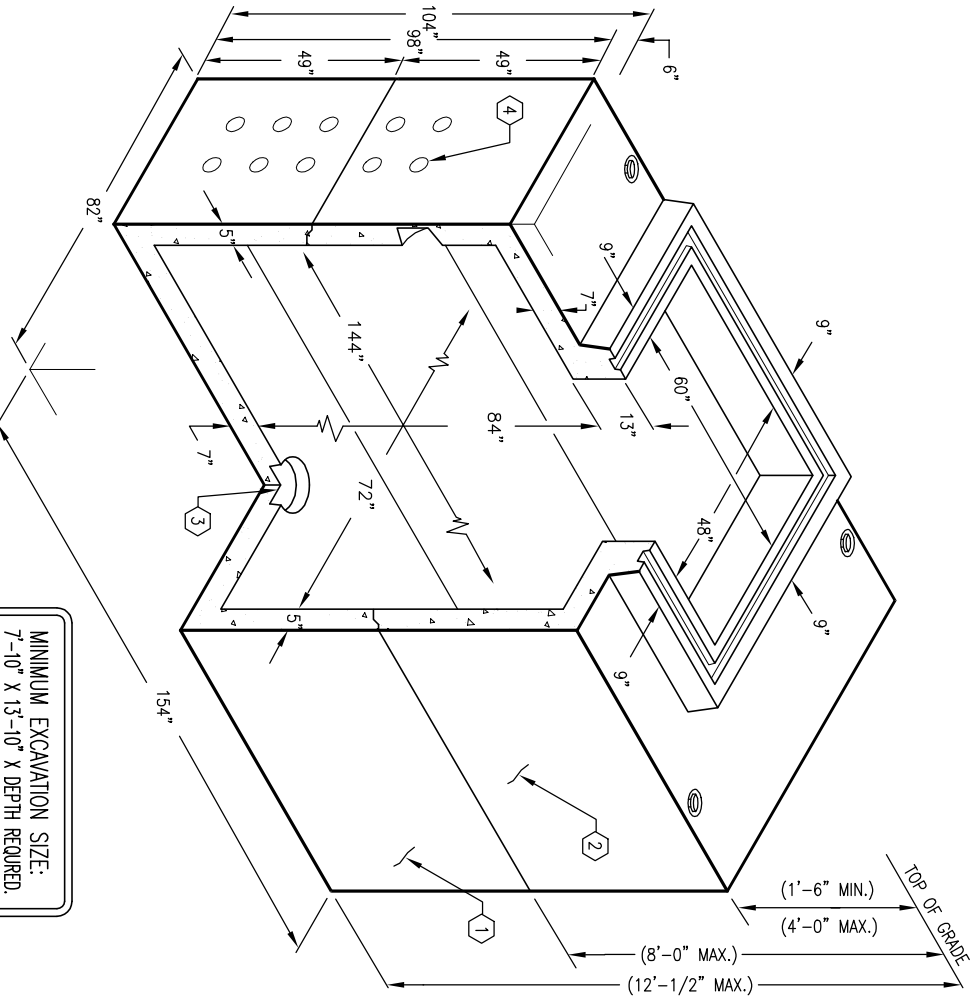
1. Minimum soil bearing capacity is hereby assumed to be 2000 PSF unless otherwise documented by a geotechnical report that shall be provided to Jensen Precast by the end user. Jensen Precast shall not be held responsible for the soil bearing capacity. Installation of Manholes, Vaults, Handholes, Meter Boxes etc. will be as per Jensen installation procedures.
2. Structural modification to the Jensen line of products is not permitted without prior written approval from Jensen Engineering Department.
3. Do not scale the drawings, verify all dimensions including rough openings, if any discrepancies are found, notify the Jensen Engineer immediately.
4. The Jensen Engineer will interpret the intent of the drawings in case of possible conflict or discrepancy.
5. Permissible Variations: Dimensional Tolerances - The length, width, height, or dia. measurements of the structure when measured on the inside surfaces shall not deviate from design dimensions by more than the following:  
Dimensions: Tolerance:  
0 to 5 Feet 1/4"  
5 to 10 Feet 3/8"  
10 to 20 Feet as agreed upon between the supplier and purchaser.
6. Squariness Tolerance: The inside of the precast concrete component shall be square as determined by diagonal measurements. The difference between such measurements shall not exceed the following:  
Measured Length: Allowable Difference  
0 to 10 Feet 1/2"  
10 to 20 Feet 3/4"  
20 Feet and over as agreed upon between the supplier and purchaser.
- 7.

1. U612-BA2-11, 42" BOTTOM SECTION, WT. 16,800 Lbs.
2. U612-142-11V, 42" ROOF SECTION, WT. 15,390 Lbs.
3. 13" X 14" DIA SUMP X 3" DEEP W/ RECESS TO ACCOMMODATE SUMP COVER, BOTTOM SECTION (1) CORE MTD.
4. 6" DIA CONTERMS, BOTTOM SECTION (24) SHELL MTD.
5. ROOF SECTION (16) SHELL MTD.
6. 18" X 18" UNREINFORCED PANEL, ROOF SECTION (4) CORE MTD.
7. 10" DIA X 4" DEEP ABS PLASTIC VENT TERMINATORS, ROOF SECTION (2) CORE MTD.
8. 7/8" DIA X 6" GALVANIZED PULL IRON, BOTTOM SECTION (4) CORE MTD.
9. SECTION (4) CORE MTD.; TOP SECTION (4) CORE MTD.
10. 1/2" THREADED BRONZE INSERT BRAZED TO STRUCTURAL STEEL REBAR "GRD" SHALL BE STENCILED IN RED LETTERS (1 1/2" MIN - 2" MAX) ON THE CONCRETE ABOVE EACH INSERT, BOTTOM SECTION (2) CORE MTD.; ROOF SECTION (4) CORE MTD.
11. 1/2" P-36-T INSERT, ROOF SECTION (4) CORE MTD.
12. 1/2" P-36-T INSERT, ROOF SECTION (8) CORE MTD.

**NOTCH DETAIL**



1/4" SHAPED NOTCH ON INSIDE WALLS TO OUTLINE UNREINFORCED 18" X 18" PANELS



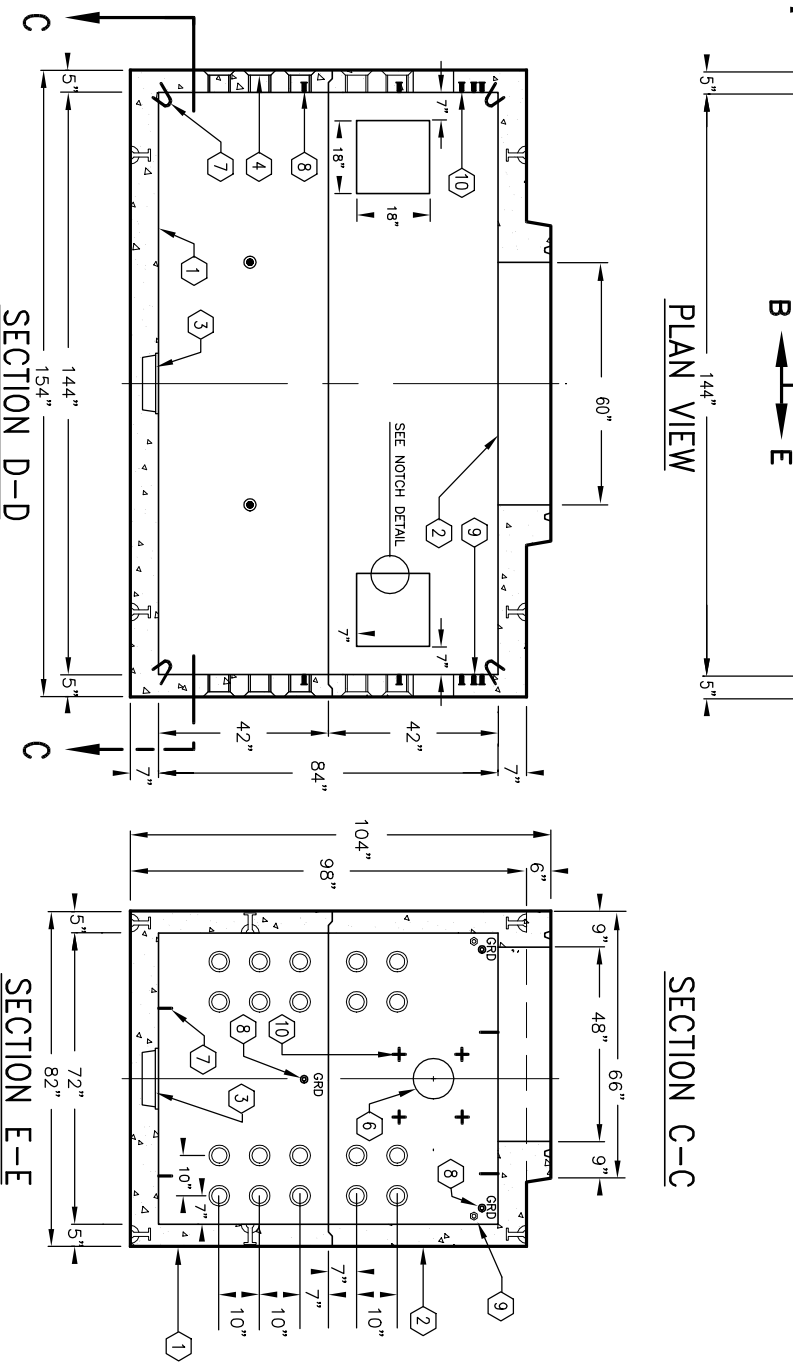
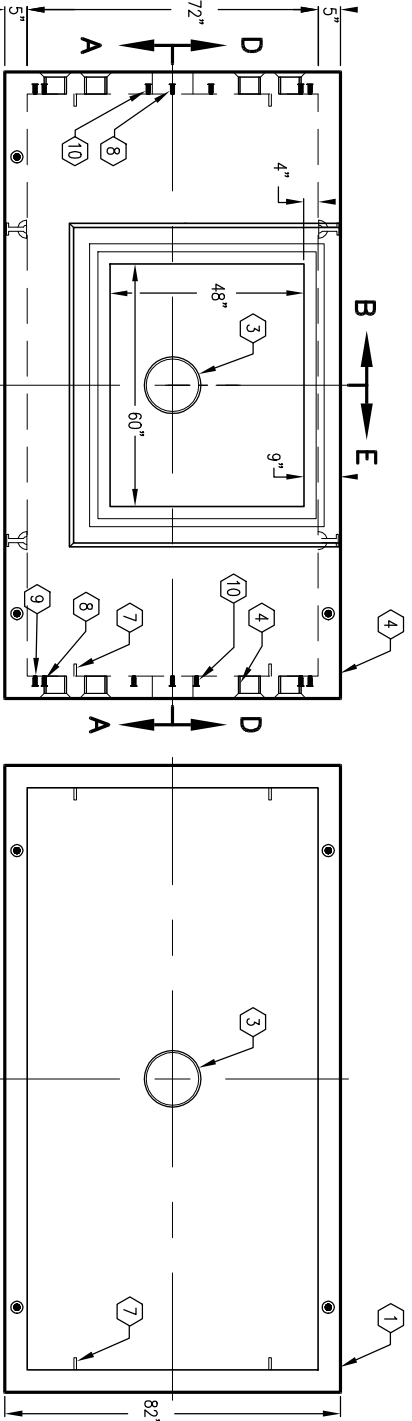
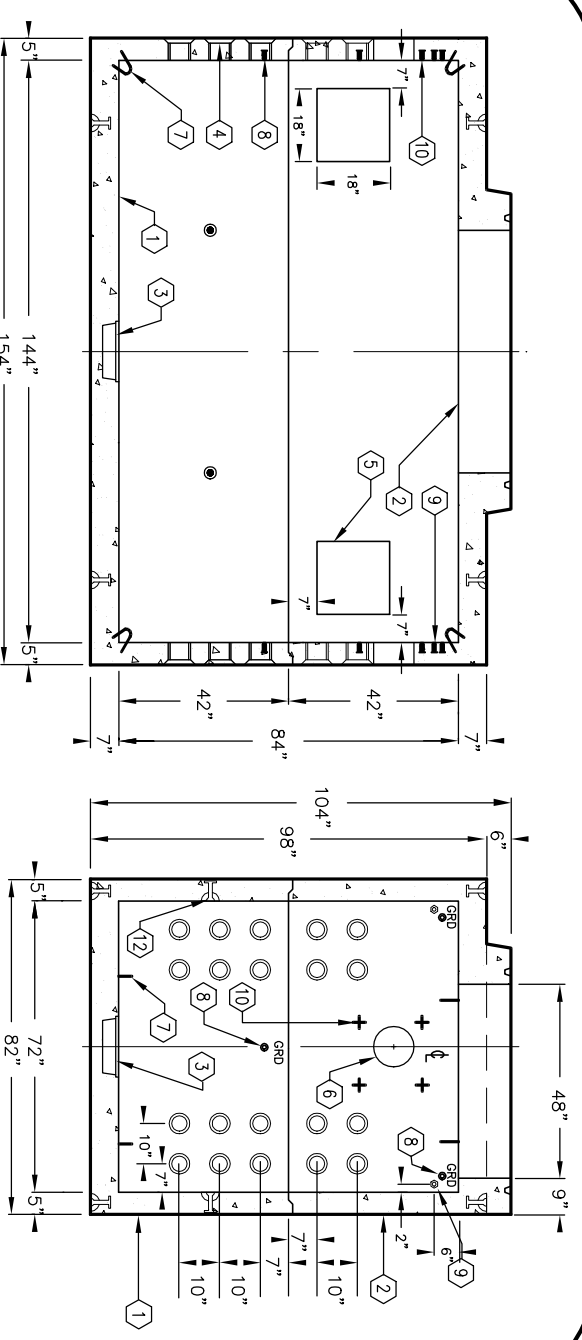
**MINIMUM EXCAVATION SIZE:**  
7'-10" X 13'-10" X DEPTH REQUIRED



**K612-FV84-18**  
PER CITY OF COLTON

AUTOCAD REL. 14

03-01-02



**K612-FV84-18**  
PER CITY OF COLTON

03-01-02

#	DATE	DESCRIPTION	BY