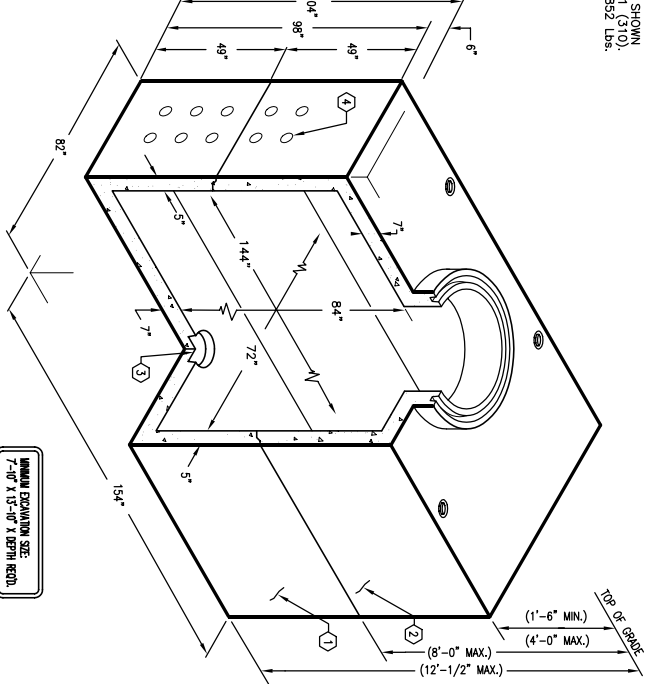


6'-0" x 12'-0" EDISON MANHOLE x 7' DEEP

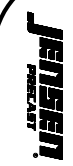
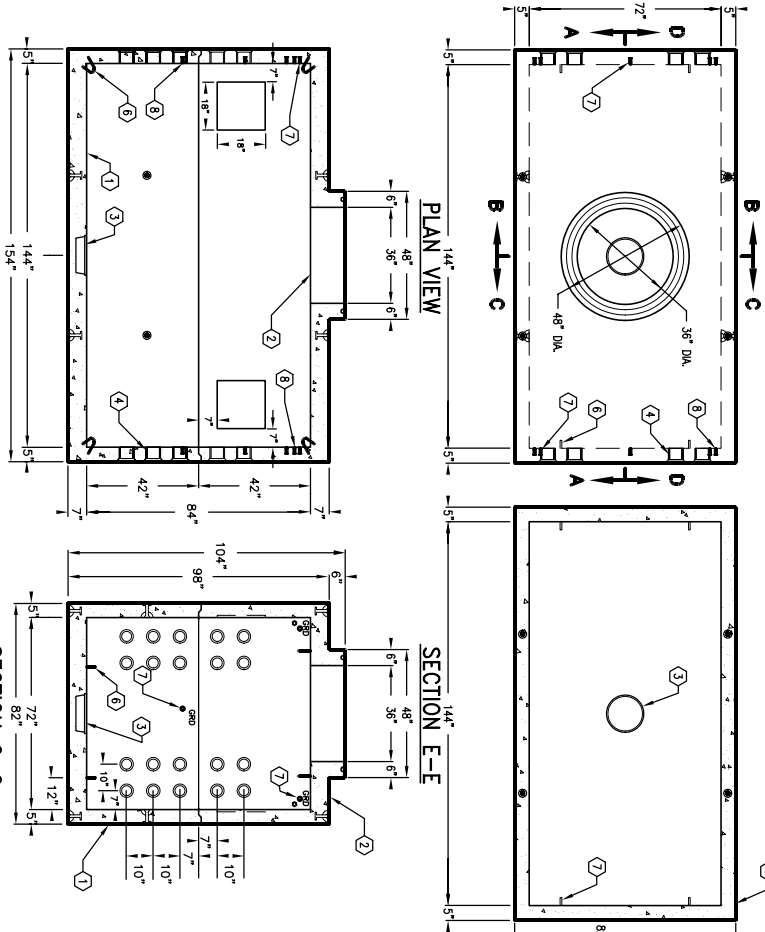
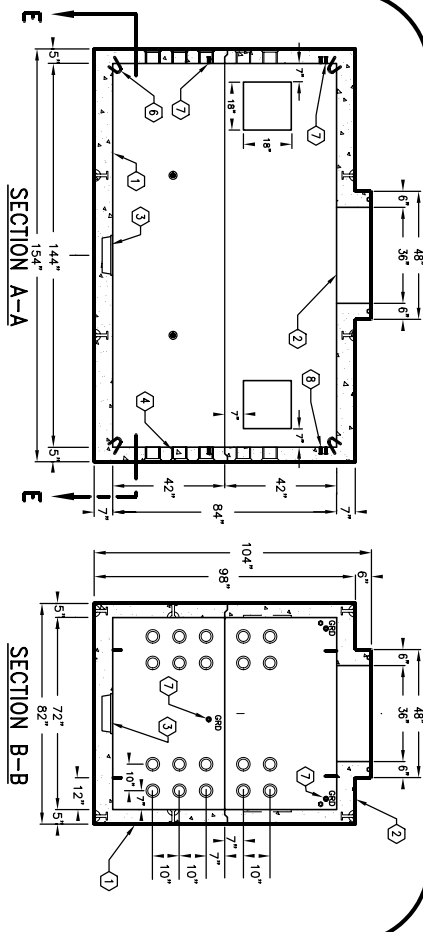
- NOTES:**
- MANHOLE DESIGNED IN ACCORDANCE WITH AASHTO H-20-44 TRAFFIC BRIDGE LOADING USING 5,500 PSI (39,200 KSI) COMPRESSIVE STRENGTH CONCRETE AND 60,000 PSI (4,137 MPa) TENSILE STRENGTH A-7-06 STEEL REINFORCEMENT PER CALCS. #31094.
 - MANHOLE TO BE PLACED ON A MIN. 6" BASE OF GRAVELER RUN FOR EDGE OF INSTALLATION AND EVEN LOAD DISTRIBUTION
 - LIMIT OF COVER OVER ROOF SECTION IS 1'-6" TO 4'-0"
 - LIMIT OF EMBEDMENT OF BOTTOM SECTION IS 10'-6" TO 13'-2"
 - ALL WALLS AND CEILING TO BE PAINTED WITH WHITE PAINT
 - STRUCTURAL DESIGN APPROVED BY LOS ANGELES COUNTY ROAD AND BRIDGE DEPARTMENT.
- FOLLOWING MATERIALS TO BE SHIPPED WITH MANHOLE:**
- (a) 1/2" x 6" GALVANIZED 3/4" BOLTS (4 REQ'D)
 - (b) 7/8" x 1 3/4" CONSUAL GASKET (33 FT. REQ'D)
- ORDERING INFORMATION:**
- K612-FM84-11 FOR ASSEMBLY AS SHOWN PER EDISON SPEC. US 300 M-11 (310)
 TOTAL WEIGHT OF ASSEMBLY IS 32,852 Lbs.

- GENERAL NOTES:**
1. Minimum soil bearing capacity is hereby assumed to be 2000 PSF. A geotechnical report shall be provided to Jensen Precast by the end user. Jensen Precast shall not be held responsible for the soil bearing capacity. Handholes, Water Boxes etc. will be as per Jensen installation procedures.
 2. Structural modification to the Jensen line of products is not approved from Jensen Engineering Department. Do not scale the drawings, verify all dimensions including rough openings, if any discrepancies are found, notify Jensen Engineer immediately.
 3. The Jensen Engineer will interpret the intent of the drawings in case of possible conflict or discrepancy.
 4. **Dimensional Tolerances -** The length, width, height, or dia. measurements of the structure when measured on the inside surfaces shall not deviate from design dimensions by more than the following:
 - Length: 1/4"
 - Width: 3/8"
 - Height: 1/4"
 - 0 to 5 Feet: 1/4"
 - 5 to 10 Feet: 3/8"
 - 10 to 20 Feet as agreed upon between the supplier and purchaser.
 5. **Squareness Tolerance:** The inside of the precast concrete determined by diagonal measurements. The difference between such measurements shall not exceed the following:
 - 0 to 10 Feet: 3/4"
 - 10 to 20 Feet: 1 1/2"
 - 20 Feet and over as agreed upon between the supplier and purchaser.
 6. **Measured Length:** Allowable Difference 0 to 10 Feet: 3/4"
 10 to 20 Feet: 1 1/2"
 20 Feet and over as agreed upon between the supplier and purchaser.



K612-FM84-11
 PER EDISON SPEC. US 300 M-11 (310)
 03-01-02

1. IWB12-1842-11, 42" BOTTOM SECTION, WT. 16,800 Lbs.
2. IWB12-1742-11M, 42" TOP SECTION, WT. 16,052 Lbs.
3. 13" x 14" DIA SUMP X 3" DEEP W/RECESS TO ACCOMMODATE SUMP COVER, BOTTOM SECTION (1)
4. CORE WITH REINFORCERS, BOTTOM SECTION (24) SHELL MTD.
5. ROOF SECTION (16) SHELL MTD.
6. ROOF SECTION (18) UNREINFORCED PANEL, ROOF SECTION (4) CORE MTD.
7. 7/8" DIA X 6" GALVANIZED PULL IRON (08-2204), BOTTOM SECTION (4) CORE MTD.
8. 1/2" THREADED BRONZE INSERT BRAZED TO STRUCTURAL STEEL, REBAR 60,000 SHALL BE PROVIDED IN RED LETTERS PER EDISON SPEC. US 300 M-11 (310) (4) CORE MTD.
9. 1/2" P-36-1 INSERT, ROOF SECTION (4) CORE MTD.



K612-FM84-11
 PER EDISON SPEC. US 300 M-11 (310)
 03-01-02

DATE	DESCRIPTION	BY