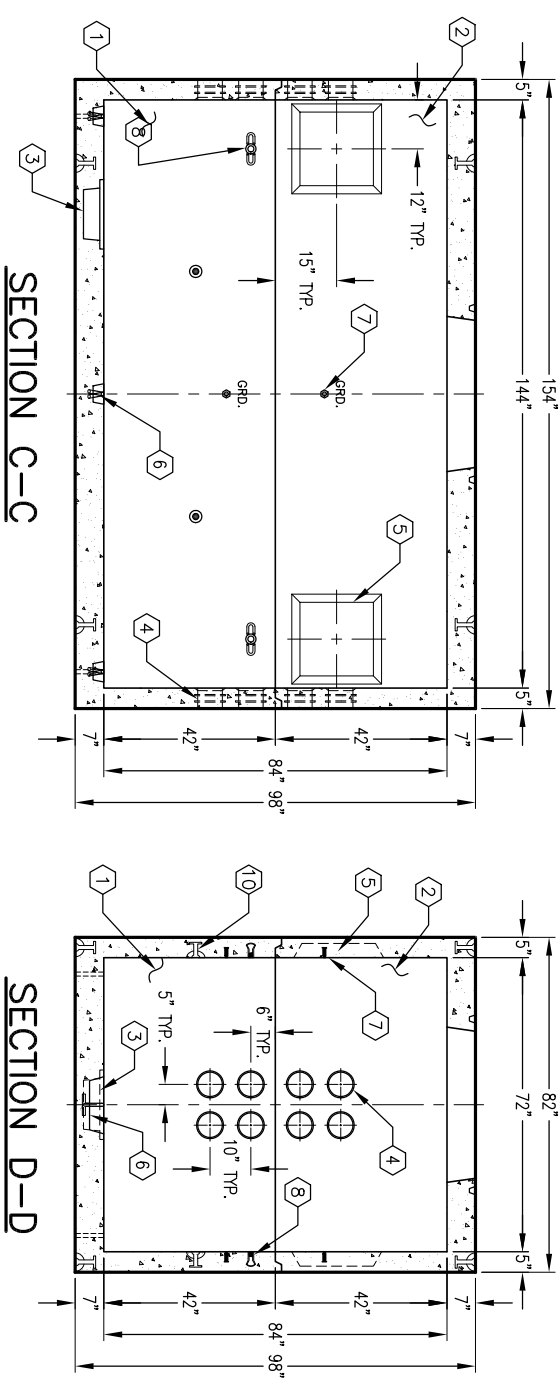
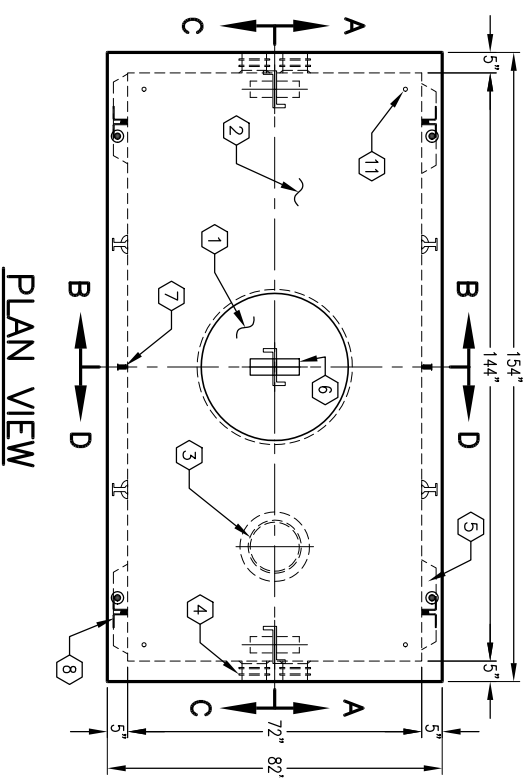
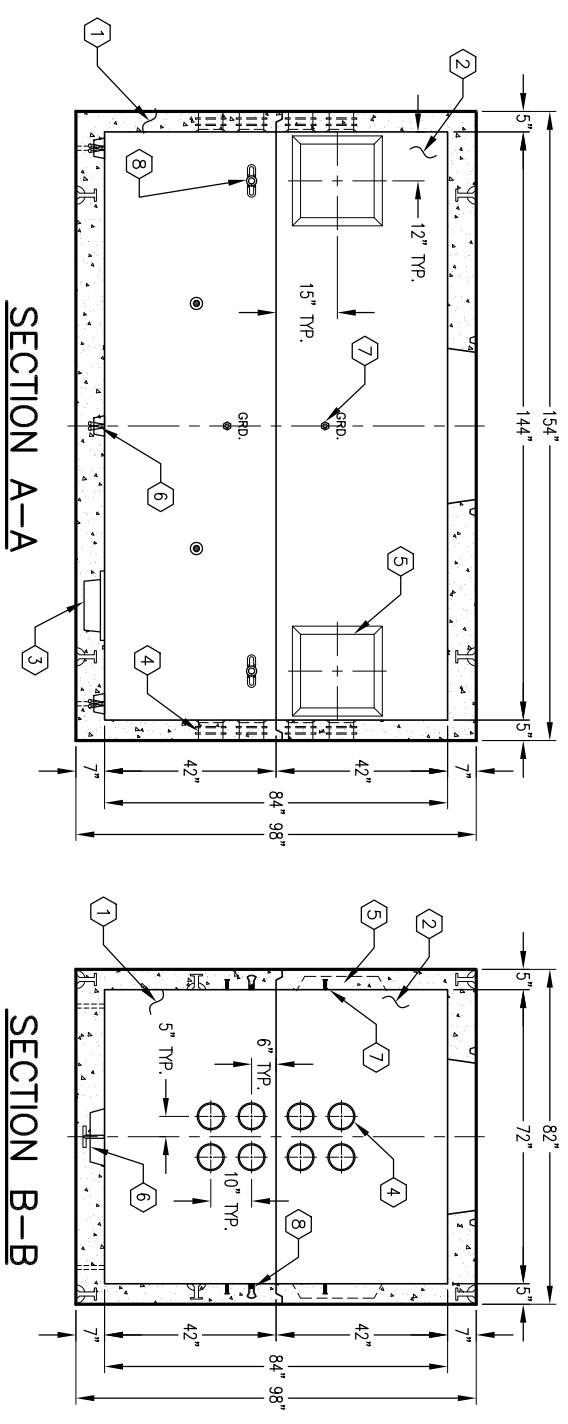
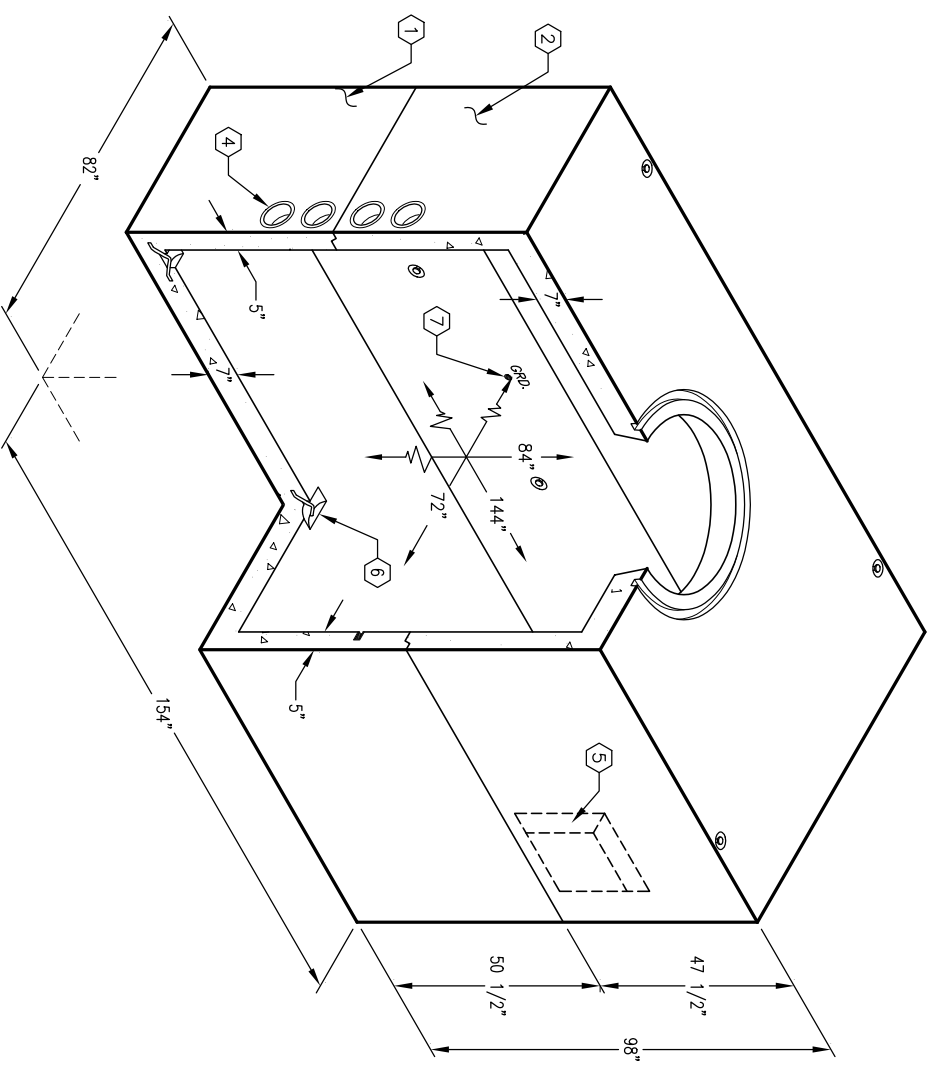


# 6'-0" x 12'-0" BURBANK MANHOLE x 7'-0" DEEP

**NOTES:**

- DESIGNED IN ACCORDANCE WITH AASHTO. H-20-44 BRIDGE LOADING USING 5,500 PSI COMPRESSIVE STRENGTH CONCRETE AND 60,000 PSI YIELD STRENGTH ASTM A-706 STEEL REINFORCEMENT PER CALCS #30415.
  - MANHOLE TO BE PLACED ON A MIN. 6" BASE OF CRUSHER RUN FOR EASE OF INSTALLATION AND EVEN LOAD DISTRIBUTION.
  - INSIDE SURFACES OF MANHOLE TO BE PAINTED WITH WHITE LATEX PAINT.
- ORDERING INFORMATION:**
- K612-FM84-17 FOR ASSEMBLY AS SHOWN.  
TOTAL WEIGHT OF ASSEMBLY IS 31,208#.

1. UV612-B42-17, 42" BOTTOM SECTION (6000-222). WT. 15,913#.
2. UV612-T42-17M, 42" TOP SECTION W/36" (6000-223M). WT. 15,295#.
3. 12" x 13" DIA. SUMP x 5" DEEP, W/RECESS TO ACCOMMODATE SUMP COVER (08-2102), BOTTOM SECTION (1) CORE MTD.
4. 6" DIA. CONTERMS, BOTTOM SECTION (8) SHELL MTD.; ROOF SECTION (8) SHELL MTD.
5. 18" x 18" KNOCKOUT x 3 1/2" DEEP, DRAFT 2" TYP. ALL SIDES, ROOF SECTION (4) CORE MTD.
6. 7/8" DIA. x 3 3/8" GALV. PULL IRON, BOTTOM SECTION (5) CORE MTD.
7. 1/2" THRD. BRONZE INSERT BRAZED TO STRUCTURAL STEEL, 1/2" SHALL BE STENCILED IN RED LETTERS (1 1/2" MIN - 2" MAX) ON THE CONCRETE ABOVE INSERT, BOTTOM SECTION (2) CORE MTD.; ROOF SECTION (2) CORE MTD.
8. 1" DIA. THRD. INSERT, BOTTOM SECTION (4) CORE MTD. 4 TON x 9 1/2" RISS, BOTTOM SECTION (4) SURFACE MTD.; ROOF SECTION (4) SURFACE MTD.
9. 4 TON x 4 3/4" RISS, BOTTOM SECTION (4) CORE MTD. 1" DIA. BLIND GROUND ROD HOLE, BOTTOM (4) CORE MTD.
10. 1" DIA. BLIND GROUND ROD HOLE, BOTTOM (4) CORE MTD.
11. 1" DIA. BLIND GROUND ROD HOLE, BOTTOM (4) CORE MTD.



#	DATE	DESCRIPTION	BY