

## 2'-0" x 3'-0" CITY OF CORONA INTERCEPT BOX x 3'-0" DEEP

### NOTES:

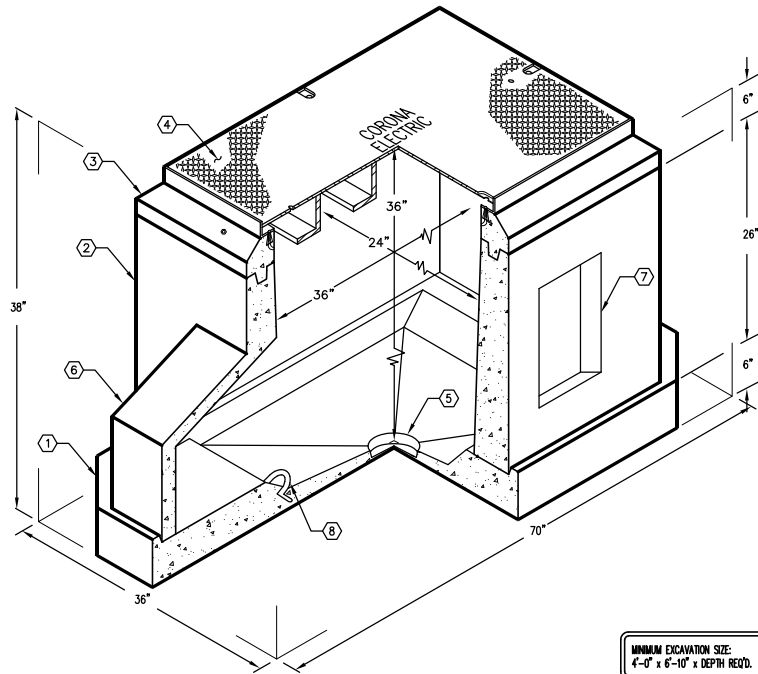
- 1. INTERCEPT BOX DESIGNED IN ACCORDANCE WITH AASHTO H-20-44 TRAFFIC BRIDGE LOADING USING 5,500 PSI COMPRESSIVE STRENGTH CONCRETE AND 60,000 PSI YIELD STRENGTH ASTM A-706 STEEL REINFORCEMENT.
- 2. INTERCEPT BOX TO BE PLACED ON A MIN. 6" BASE OF CRUSHER RUN FOR EASE OF INSTALLATION AND EVEN LOAD DISTRIBUTION.

### ORDERING INFORMATION:

PER CITY OF CORONA SPEC.  
TOTAL WEIGHT OF ASSEMBLY SHOWN IS 2,226 lbs.

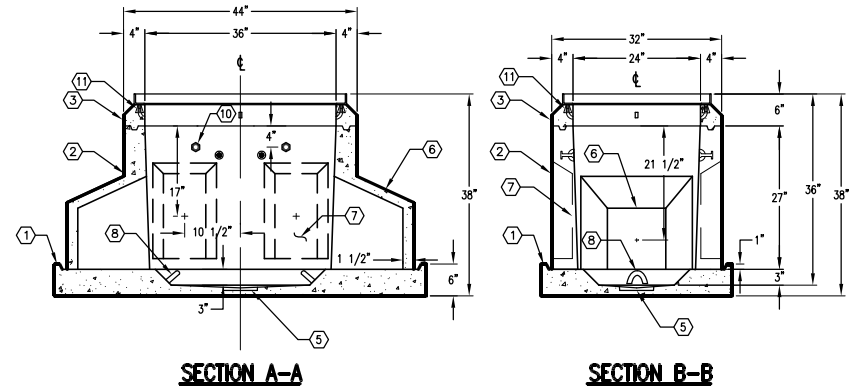
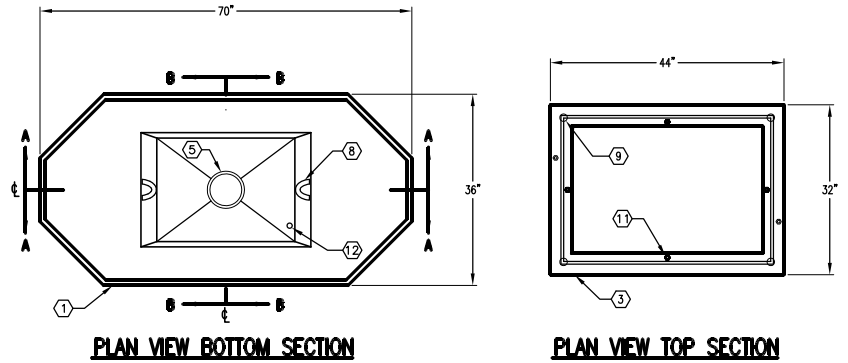
1. PB2436-B-05, 3" BASE SECTION, WT. 953 lbs.
2. PB2436D-I27-05, 27" INTERMEDIATE SECTION, WT. 954 lbs.
3. PB2436-T6E, 6" TOP SECTION W/ F2436-PB-ANG GALV. FRAME CAST IN, WT 185 lbs.
- 4A. SC2436-TGV, ONE PIECE BOLTDOWN TRAFFIC COVER, GALVANIZED FINISH. MARKED "CORONA ELECTRIC". WT. 134 lbs. (AS SHOWN)
- 4B. 12-20-XX, ONE PIECE RPM PARKWAY COVER, MARKED "CORONA ELECTRIC". (NOT SHOWN)
5. 6" x 6 1/2" DIA. SUMP x 1" DEEP.
6. 11" x 11" DUCT K.O. x 13 1/2" DEEP, INT. SECTION.
7. 8" x 16" K.O. x 3" DEEP, INT. SECTION.
8. 7/8" DIA. PULL IRON. BASE SECTION.
9. 1/2" x 5" ADJUSTING BOLT W/NUT ASSEMBLY, TOP SECTION.
10. 1/2" PLASTIC INSERT. INTERMEDIATE SECTION.
11. 1/2" P-35-T INSERT. W/CLEAN-OUT HOLE. TOP SECTION.
12. 1" DIA. GROUND KNOCKOUT HOLE. BASE SECTION.

**PARKWAY ASSEMBLY WITH RPM COVER K2436-DI36-39P.**  
**LIGHT TRAFFIC ASSEMBLY WITH STEEL COVER K2436-DI36-39T.**



**K2436-DI36-39**  
PER CITY OF CORONA SPEC. 04-23-04

**JENSEN**  
PRECAST  
AUTOCAD 2000



**JENSEN**  
PRECAST

#	DATE	DESCRIPTION	BY

**K2436-DI36-39**  
PER CITY OF CORONA SPEC. 04-23-04