

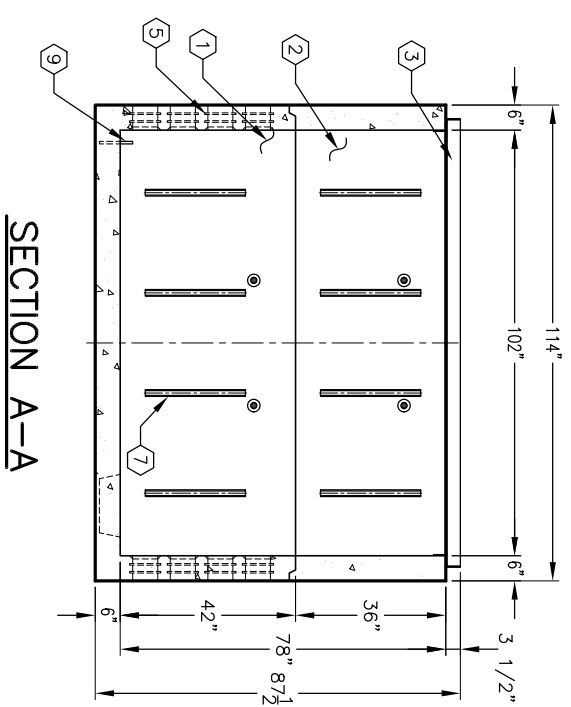
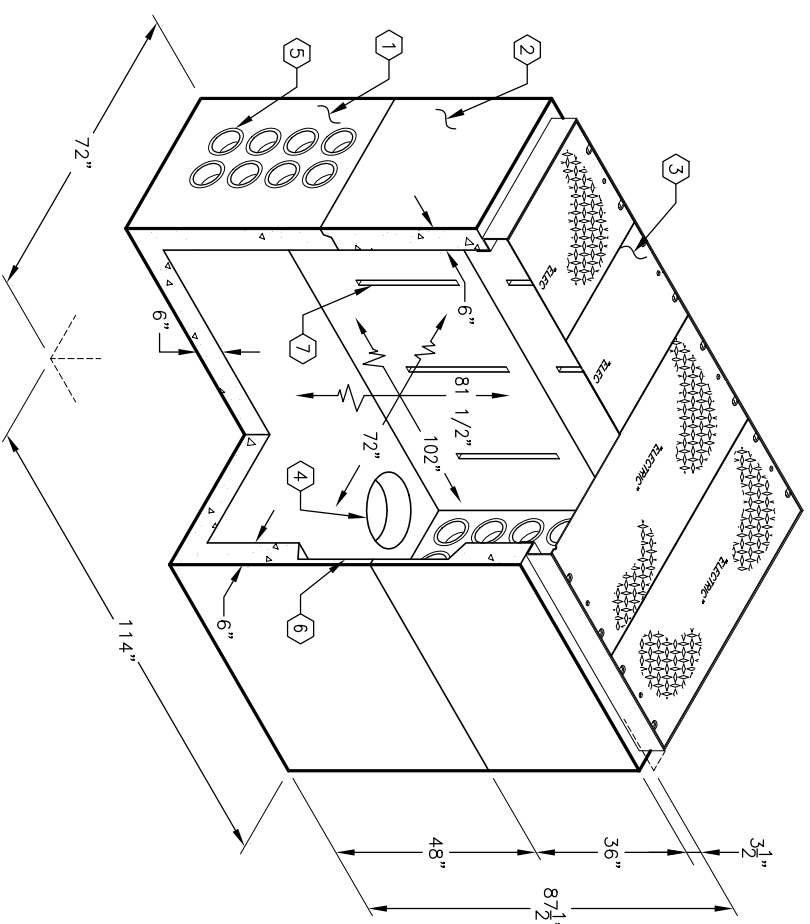
5'-0" x 8'-6" ANAHEIM PARKWAY SWITCH ENCLOSURE x 6'-6" DEEP

NOTES:

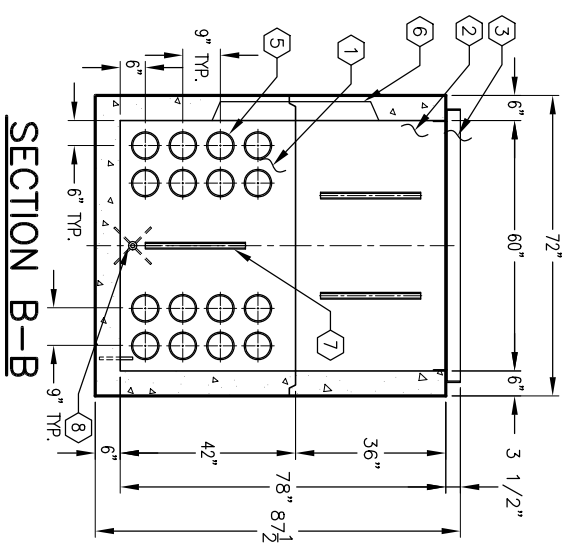
- 1. VAULT DESIGNED IN ACCORDANCE WITH AASHTO H-20-44 TRAFFIC BRIDGE LOADING USING 5,500 PSI COMPRESSIVE STRENGTH CONCRETE AND 60,000 PSI YIELD STRENGTH ASTM A-706 STEEL REINFORCEMENT PER CALCS.
- 2. COVER DESIGNED FOR PARKWAY LOADING 300 P.S.F. OR TRAFFIC LOADING H-20.
- 3. VAULT TO BE PLACED ON A MIN. 6" BASE OF CRUSHER RUN FOR EASE OF INSTALLATION AND EVEN LOAD DISTRIBUTION.
- 4. ALL INTERIOR SURFACES SHALL BE PAINTED WITH TWO COATS OF FLAT LATEX WHITE PAINT (FRAZEE #410 OR EQUAL).
- 5. PB586-B42-16, 42" BOTTOM SECTION, WT. 11,888#.
- 6. PB586-T36-16, 36" TOP SECTION, WT. 6,525#.
- 7. CA586-PG-16, (4) PIECE PARKWAY GALV. COVER & FRAME ASSM. W/ADJUSTMENT BOLTS. (12) 1/2" SILICON-BRONZE 6-SIDED HEAD BOLTS, GALV. TAMPER PLATE BELOW LIFT HOLES, MARKED "ELECTRIC". WT. 1,530#.
- 8. 13" x 14" DIA. SUMP x 5" DEEP W/GRADE & RECESS. BOTTOM SECTION (1) CORE MTD.
- 9. 6" DIA. TERMS. BOTTOM SECTION (32) SHELL MTD. 12" x 18" KNOCKOUT x 4 1/2" DEEP. BOTTOM SECTION (1) CORE MTD.; ROOF SECTION (1) CORE MTD. 1 5/8" x 1 5/8" GALV. CAST-IN UNISTRUT x 24" LONG. BOTTOM SECTION (10) CORE MTD.; ROOF SECTION (12) CORE MTD. X 1" DIA. COIL THRD. INSERT. BOTTOM SECTION (2) CORE MTD.
- 10. Ø 5/8" GROUND ROD ATTACHED TO REBAR, 3" PROJECTION x 6" LONG, BOTTOM SECTION (2) CORE MTD.

ORDERING INFORMATION:

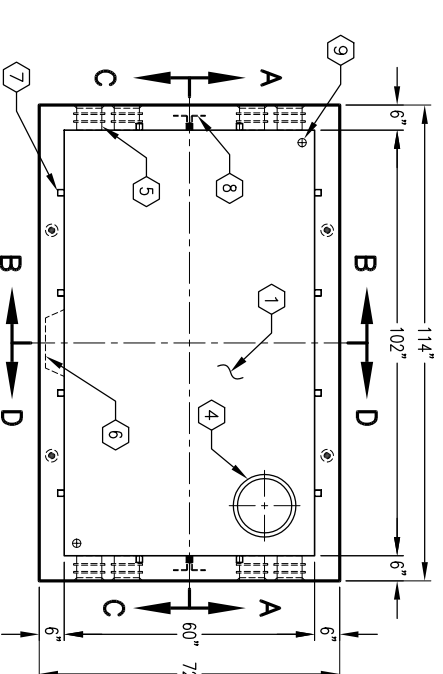
K586-SE82-16P FOR ASSEMBLY AS SHOWN.
 APPROVED FOR ANAHEIM SPEC. CU 1600-3D.
 TOTAL ASSEMBLY WT. 20,565#.



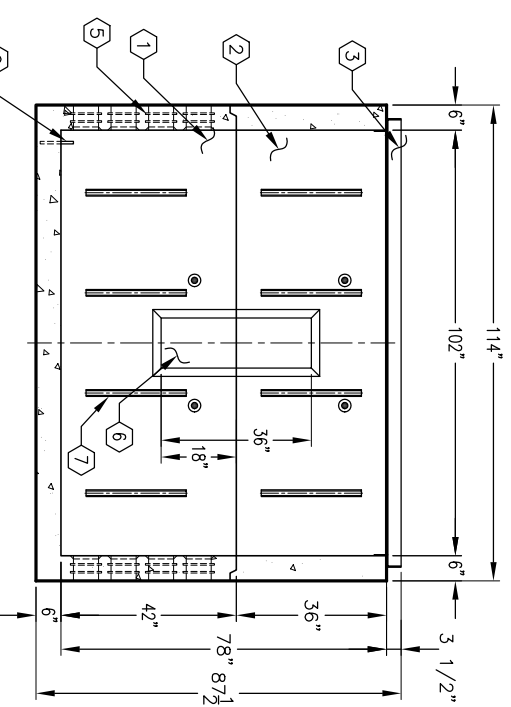
SECTION A-A



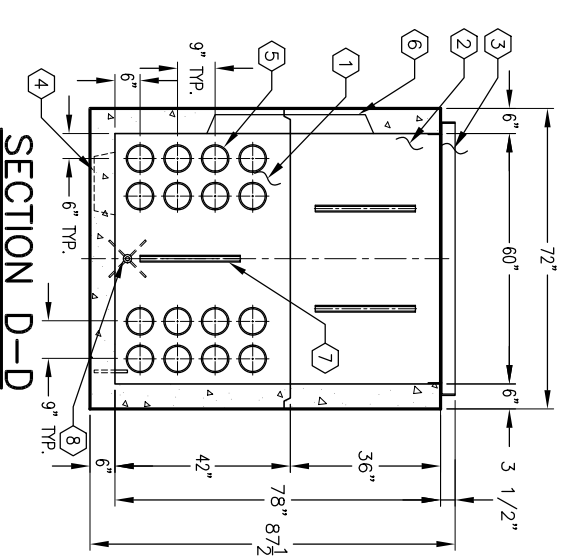
SECTION B-B



PLAN VIEW



SECTION C-C



SECTION D-D

#	DATE	DESCRIPTION	BY