

6'-0" x 9'-6" ANAHEIM TRANSFORMER PAD W/5'-0" x 8'-6" ENCLOSURE x 5'-1" DEEP

NOTES:

- TRANSFORMER PAD IS DESIGNED FOR PARKWAY LOADING AND CABLE BOX IS DESIGNED IN ACCORDANCE W/ AASHTO H-20 TRAFFIC BRIDGE LOADING USING 5,500 PSI [37.92Mpa] COMPRESSIVE STRENGTH CONCRETE, AND 60,000 PSI [413.2Mpa] ASTM A-706 REINFORCING STEEL PER CALCS. #31426
- COVER IS DESIGNED FOR PARKWAY LOADING PER CALCS. #31420
- ENCLOSURE TO BE PLACED ON A MIN. 6" BASE OF CRUSHER RUN FOR EVEN LOAD DISTRIBUTION AND EASE OF INSTALLATION.

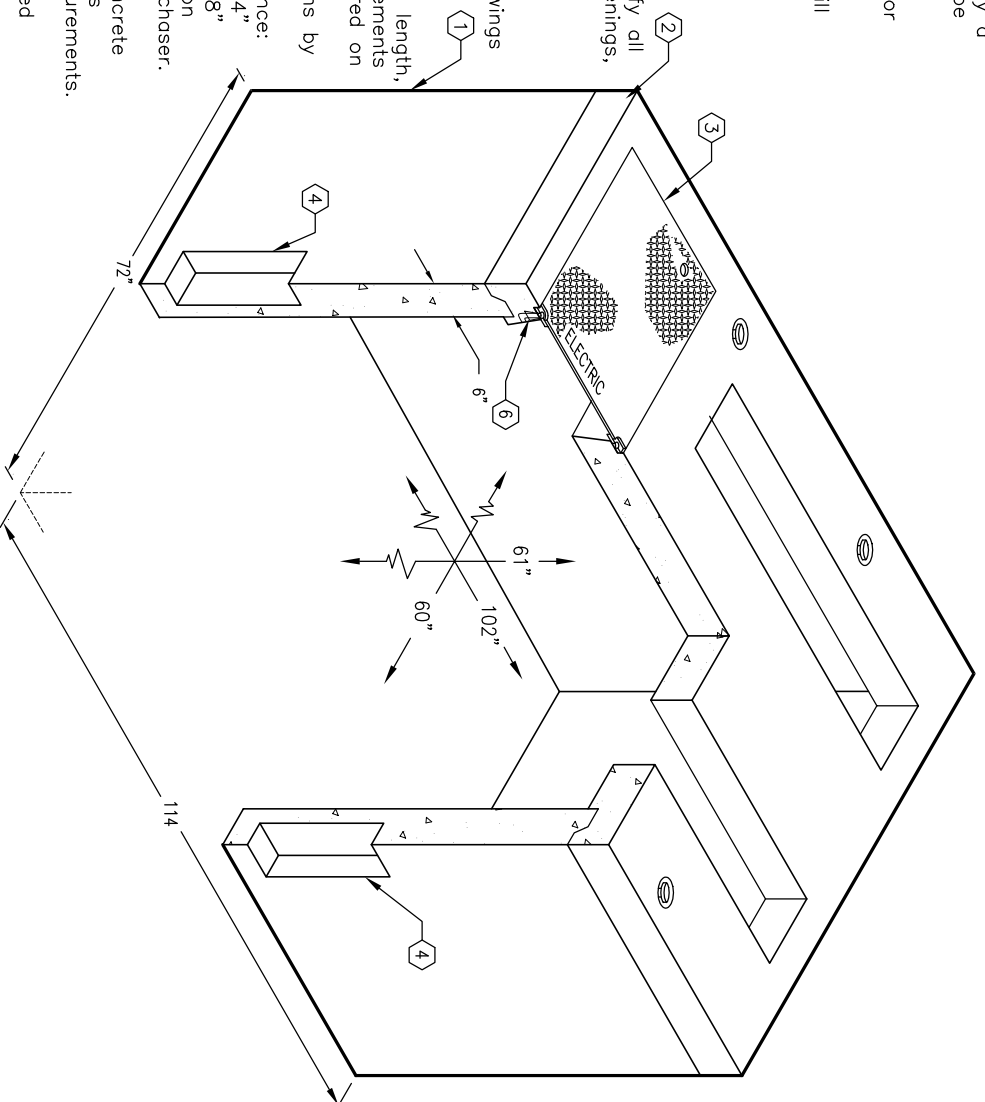
ORDERING INFORMATION:

K586-SB61-16 FOR ASSEMBLY AS SHOWN.
CITY OF ANAHEIM SPEC. CU 1600-1A.
TOTAL WEIGHT OF ASSEMBLY AS SHOWN IS 15,460 Lbs.

1. PB586-161-16, 61" BOTTOM SECTION, WT. 11,056 Lbs. PD/2112-16-16, 6" TRANSFORMER PAD, WT. 4,275 Lbs. ONE PIECE COVER, DIAMOND PLATE, (CV47-GV-16) COVER, W/(2) 1/2" X 1 1/4" HEX HEAD BOLTS, GALV. FINISH & MARKED "ELECTRIC" WT. 129 Lbs.
4. 12" x 20" KNOCKOUT x 4 1/2" DEEP, BOTTOM SECTION (4) SHELL MTD.
6. 1/2" P-35-T INSERT W/CLEAN OUT HOLE, TRANSFORMER PAD (2) FRAME MTD.
7. 1" COIL THRD. INSERT, LOWER SECTION (4) CORE MTD.

GENERAL NOTES:

1. Minimum soil bearing capacity is hereby assumed to be 2000 PSF unless otherwise documented by a geotechnical report that shall be provided to Jensen Precast by the end user. Jensen Precast shall not be held responsible for the soil bearing capacity.
2. Installation of Manholes, Vaults, Handholes, Meter Boxes etc. will be as per Jensen installation procedures.
3. Structural modification to the Jensen line of products is not permitted without prior written approval from Jensen Engineering Department.
4. Do not scale the drawings, verify all dimensions including rough openings, if any discrepancies are found, notify the Jensen Engineer immediately.
5. The Jensen Engineer will interpret the intent of the drawings in case of possible conflict or discrepancy.
6. Permissible Variations:
 - Dimensional Tolerances – The length, width, height, or dia. measurements of the structure when measured on the inside surfaces shall not deviate from design dimensions by more than the following:
 - Tolerance: 1/4"
 - Dimensions: 0 to 5 Feet 3/8"
 - 5 to 10 Feet 3/8"
 - 10 to 20 Feet as agreed upon between the supplier and purchaser.
 - Squareness Tolerance:
 - The inside of the precast concrete component shall be square as determined by diagonal measurements. The difference between such measurements shall not exceed the following:
 - Measured Length: Allowable Difference 0 to 10 Feet 1/2"
 - 10 to 20 Feet 3/4"
7. 20 Feet and over as agreed upon between the supplier and purchaser.



MINIMUM EXCAVATION SIZE:
7'-0" x 10'-6" x DEPTH REQD.

K586-SB61-16

PER CITY OF ANAHEIM SPEC. CU 1600-1A

03-01-02

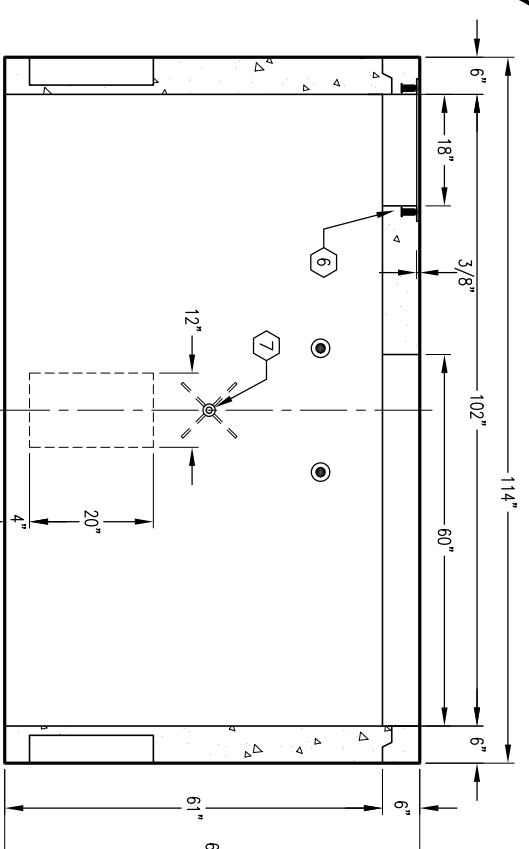
JENSEN
PRECAST

#	DATE	DESCRIPTION	BY

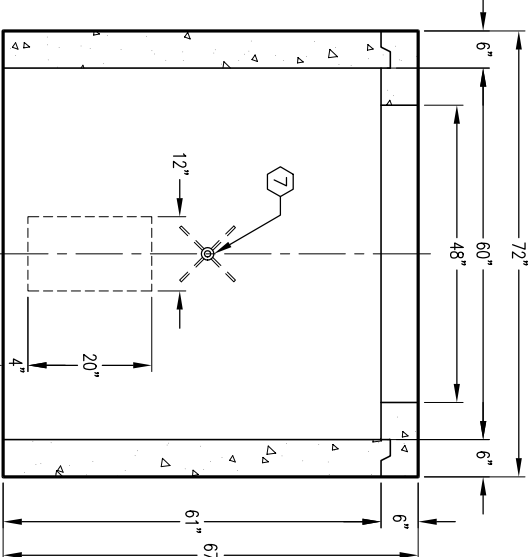
K586-SB61-16

PER CITY OF ANAHEIM SPEC. CU 1600-1A

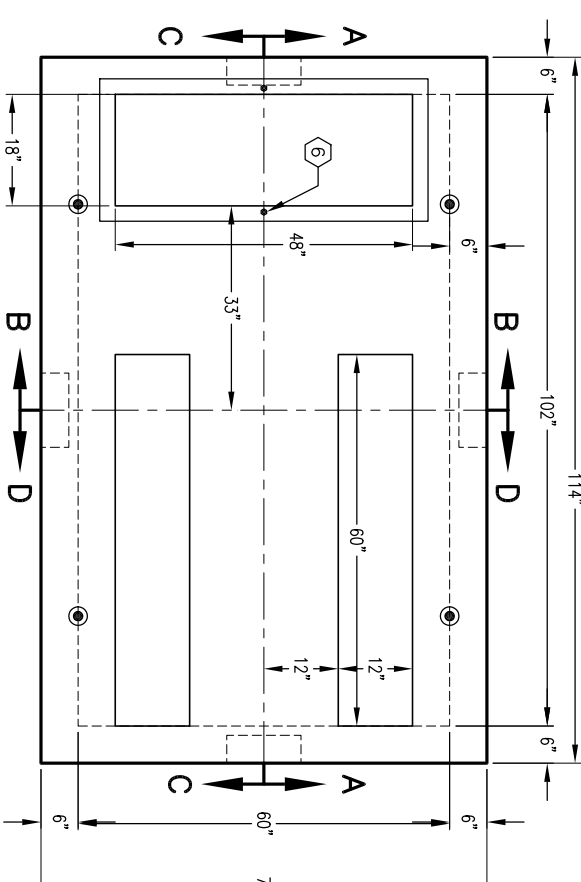
03-01-02



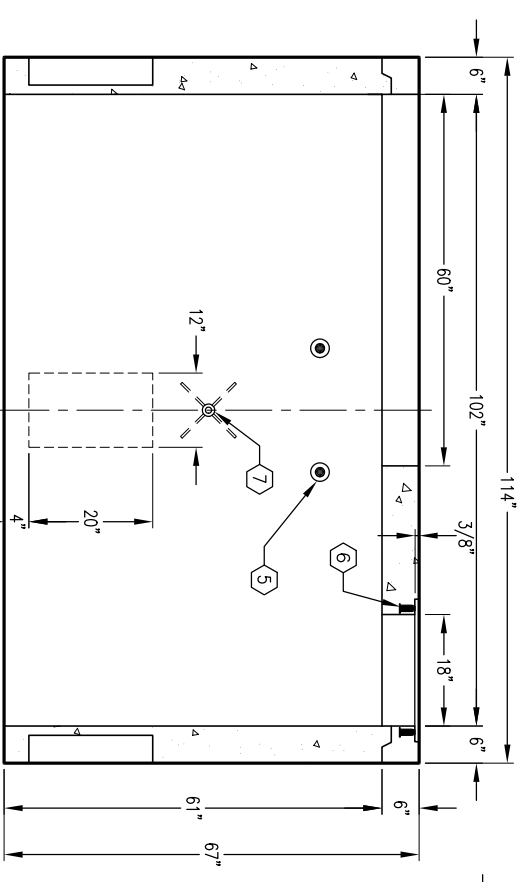
SECTION A-A



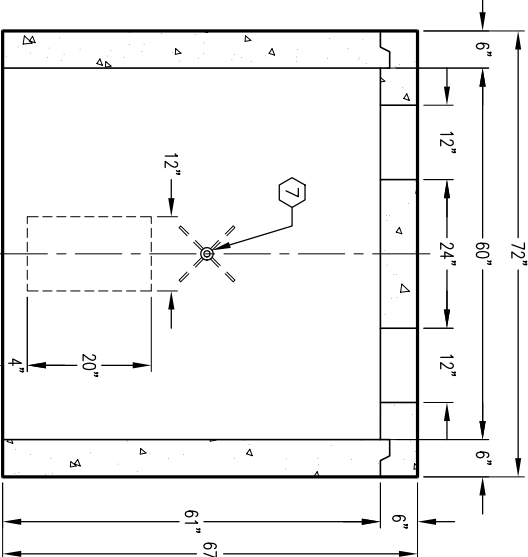
SECTION B-B



PLAN VIEW



SECTION C-C



SECTION D-D