

# 3'-6" DIA. ANAHEIM PARKWAY BURD TRANSFORMER ENCLOSURE X 5'-8" DEEP

**NOTES:**

■ TRANSFORMER ENCLOSURE DESIGNED FOR H-20-44 BRIDGE LOADING USING 5,500 PSI [37.92MPa] COMPRESSIVE STRENGTH CONCRETE AND 60,000 PSI [413.2MPa] YIELD STRENGTH ASTM A-706 STEEL REINFORCEMENT PER CALCS. #30204.

■ GRATE & ROOF SECTION DESIGNED FOR PARKWAY LOADING OF 300 PSF.

■ TRANSFORMER ENCLOSURE TO BE PLACED ON A 6" BASE OF CRUSHER RUN FOR EVEN LOAD DISTRIBUTION AND EASE OF INSTALLATION

THE FOLLOWING MATERIAL TO BE SHIPPED WITH EACH VAULT:  
(a) 7/8" x 1 3/4" CONSEAL GASKET (45 Ft. REQ'D.)

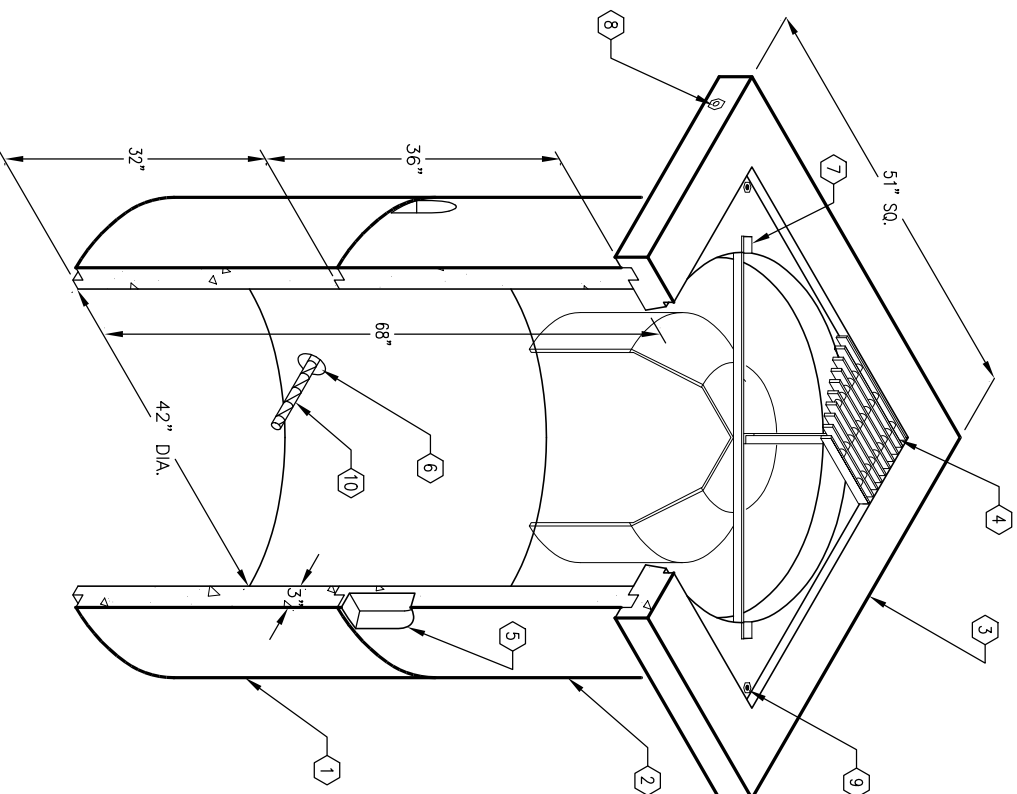
ORDERING INFORMATION:

K42-BTV68-16 FOR ASSEMBLY AS SHOWN.  
PER ANAHEIM SPEC. CU 1500-9  
TOTAL WEIGHT OF ASSEMBLY AS SHOWN IS 3,070 Lbs.

**GENERAL NOTES:**

- Minimum soil bearing capacity is hereby assumed to be 2000 PSF unless otherwise documented by a geotechnical report that shall be provided to Jensen Precast by the end user. Jensen Precast shall not be held responsible for the soil bearing capacity.
- Installation of Manholes, Vaults, Handholes, Meter Boxes etc. will be as per Jensen installation procedures.
- Structural modification to the Jensen line of products is not permitted without prior written approval from Jensen Engineering Department. Do not scale the drawings, verify all dimensions including rough openings, if any discrepancies are found, notify the Jensen Engineer immediately.
- The Jensen Engineer will interpret the intent of the drawings in case of possible conflict or discrepancy.
- Permissible Variations:  
Dimensional Tolerances – The length, width, height, or dia. measurements of the structure when measured on the inside surfaces shall not deviate form design dimensions by more than the following:  
Dimensions: Tolerance:  
0 to 5 Feet 1/4"  
5 to 10 Feet 3/8"  
10 to 20 Feet as agreed upon between the supplier and purchaser.  
Squareness Tolerance:  
The inside of the precast concrete component shall be square as determined by diagonal measurements. The difference between such measurements shall not exceed the following:  
Measured Length: Allowable Difference  
0 to 10 Feet 1/2"  
10 to 20 Feet 3/4"  
20 Feet and over as agreed upon between the supplier and purchaser.

- BTV42-132, 32" INTERMEDIATE SECTION WT. 1,103 Lbs.
- BTV42-136-16, 36" INTERMEDIATE SECTION. WT. 1,240 Lbs.
- BTV42-18-16, 6" TOP SLAB. WT. 582 Lbs.
- SG42-50G, PARKWAY GRATE ASSEMBLY W/ (12-30-42) BAFFLE, SKIRT & HANGER, W/(4) 3/8"-13NC x 1 1/2" S.S.P.B. GALVANIZED ASSEMBLY WT. 145 Lbs.
- 5" x 6" KNOCKOUT x 2" DEEP. DRAFT: T=1 3/8", S1=1 3/8", S2=1 3/8", B=0" (6) SHELL MTD. ITEM 2.
- 3" DIA. THROUGH HOLES, ITEM 1 (8) REQ'D.
- 1 1/4" WIDE x 2 1/2" LONG x 1" DEEP GROOVE FOR BAFFLE (4) REQ'D, TABLE MTD. ROOF SECT.
- 1/2" P-36-T INSERT (4) REQ'D. 2 TABLE MTD. 4 RAIL MTD. ROOF SECT.
- 3/8" P-25-T INSERT (4) REQ'D. TABLE MTD., (4) RAIL MTD. TOP SLAB.
- #8 REBAR x 48" GALV. FOR TRANSFORMER SUPPORT (2) ITEM 1
- 4200-E3-1, 3" GRADE RINGS SHALL BE USED TO BRING COVER TO GRADE. (NOT SHOWN)



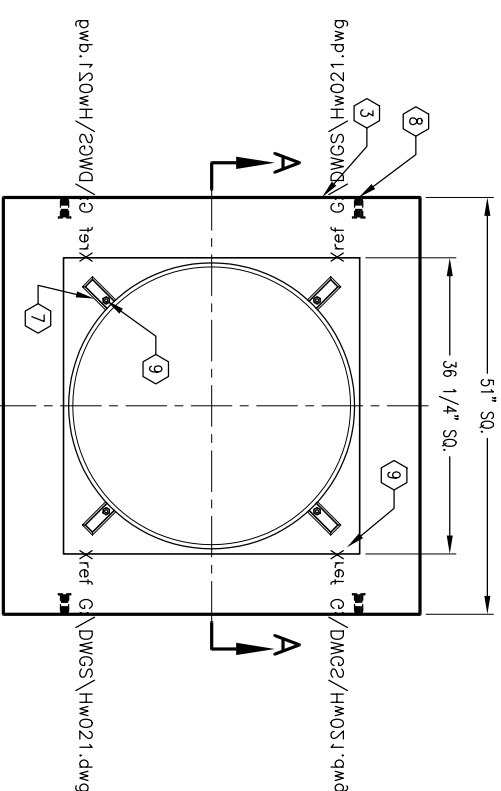
MINIMUM EXCAVATION SIZE:  
61" DIA. x DEPTH REQ'D. PLUS  
ALLOWANCE FOR ROOF SECTION

**K42-BTV68-16**

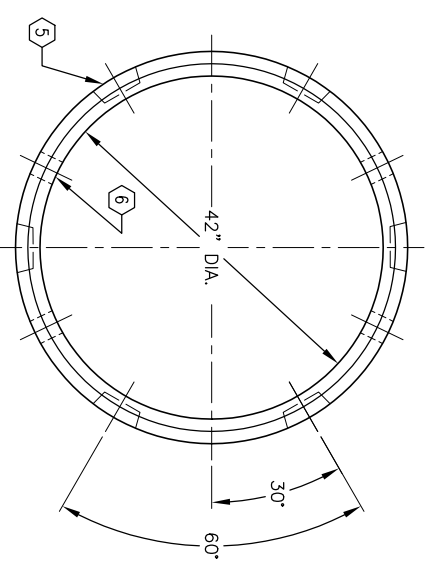
PER ANAHEIM SPEC. CU 1500-9

03-01-02

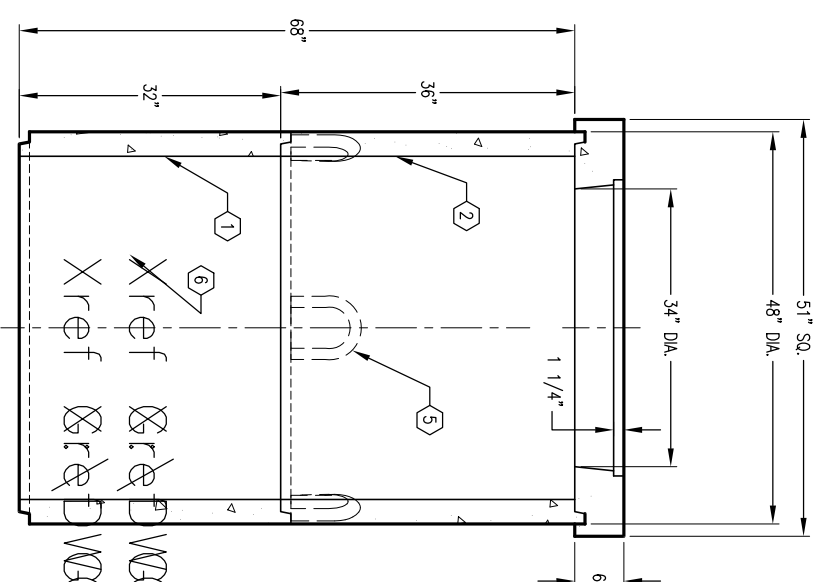
**JENSEN PRECAST**



PLAN VIEW OF TOP CAP



PLAN VIEW OF INTERMEDIATE



SECTION A-A

#	DATE	DESCRIPTION	BY

**K42-BTV68-16**

PER ANAHEIM SPEC. CU 1500-9

03-01-02

**JENSEN PRECAST**

AUTOCAD REL. 14