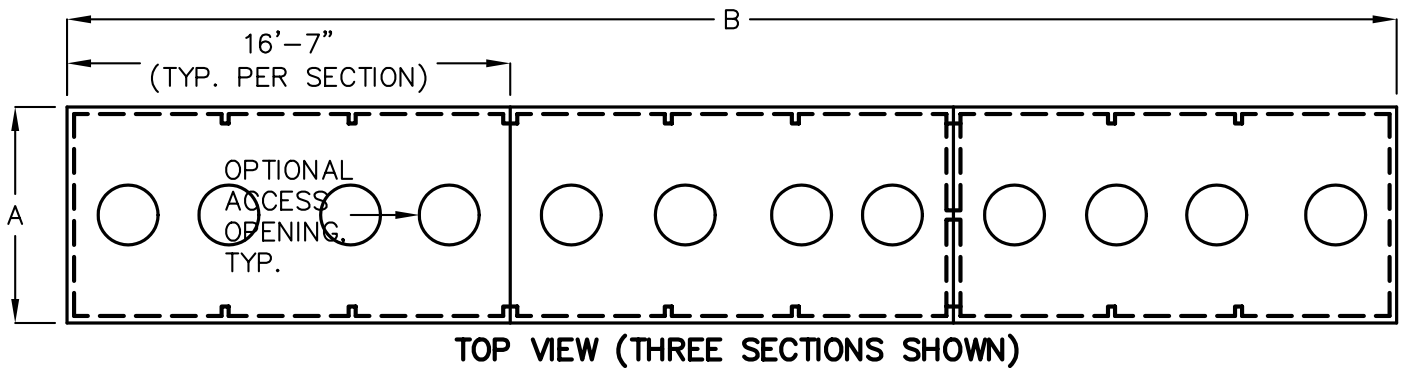
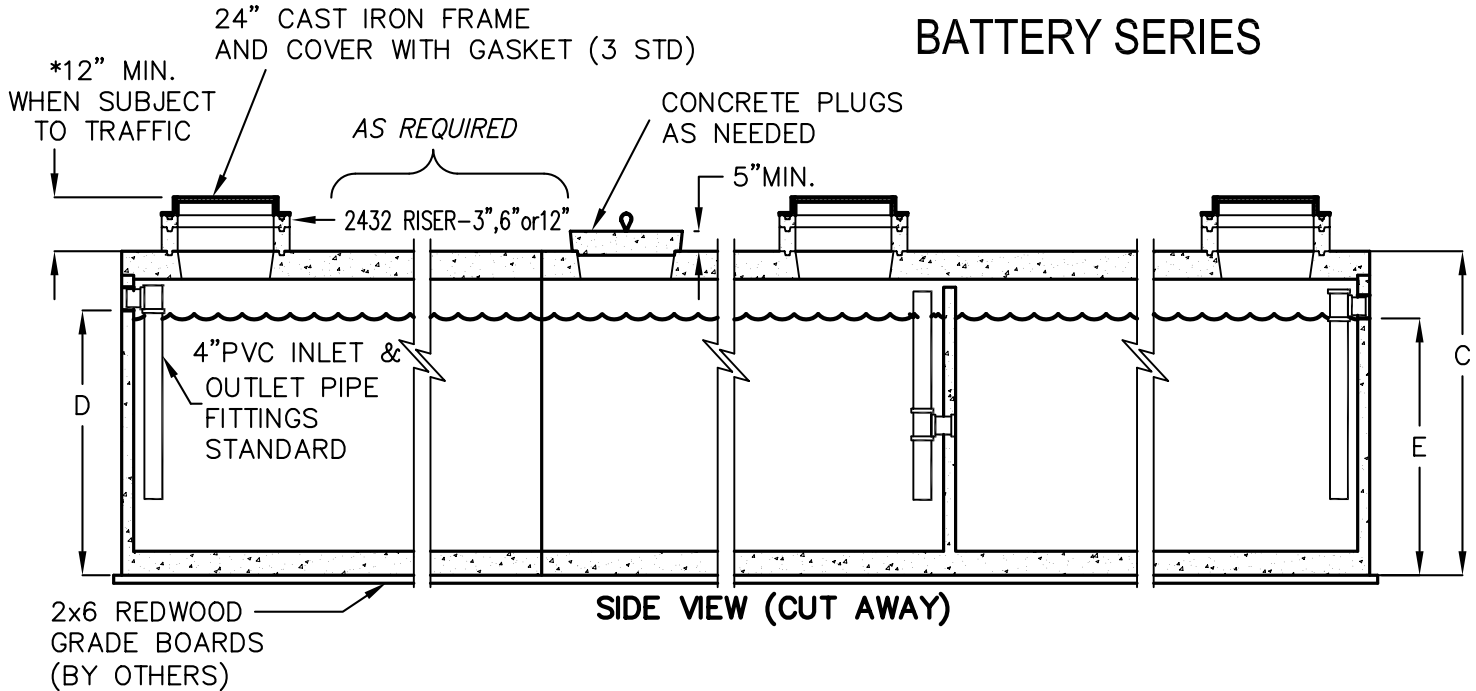


6,000 to 25,000 GAL. GREASE INTERCEPTOR BATTERY SERIES



MODEL NUMBER	LIQUID CAPACITY GALLONS	SECTIONS REQ'D	WIDTH 'A'	LAY LENGTH 'B'	TANK HEIGHT 'C'	INLET 'D'	OUTLET 'E'	MINIMUM EXCAVATION WIDTH	MINIMUM EXCAVATION LENGTH	* DEPTH OF BURY	MAX. LIFT WEIGHT
2XJP3000-G	6000	2	7'-8"	33'-3"	5'-5"	4'-4"	4'-1"	8'-8"	34'-3"	5' MAX.	16,900
2XJZ4000-G	8000	2	7'-8"	33'-3"	6'-9"	5'-6"	5'-3"	8'-8"	34'-3"	5' MAX.	19,600
2XJZ5000-G	10000	2	7'-8"	33'-3"	7'-11"	6'-9"	6'-6"	8'-8"	34'-3"	4' MAX.	21,700
3XJZ4000-G	12000	3	7'-8"	49'-11"	6'-9"	5'-6"	5'-3"	8'-8"	50'-11"	5' MAX.	19,600
3XJZ5000-G	15000	3	7'-8"	49'-11"	7'-11"	6'-9"	6'-6"	8'-8"	50'-11"	4' MAX.	21,700
4XJZ5000-G	20000	4	7'-8"	66'-7"	7'-11"	6'-9"	6'-6"	8'-8"	67'-7"	4' MAX.	21,700
5XJZ5000-G	25000	5	7'-8"	83'-3"	7'-11"	6'-9"	6'-6"	8'-8"	84'-3"	4' MAX.	21,700

OTHER SIZES AVAILABLE UPON REQUEST, CONTACT JENSEN PRECAST FOR DETAILS.

**DRAWING IS
NOT TO SCALE**

- TANK DESIGNED FOR H-20 TRAFFIC WHEEL LOAD WITH DRY SOIL CONDITIONS (WATER TABLE BELOW TANK).
- SUITABLE NATIVE OR SUB-BASE SHALL BE PREPARED TO HANDLE ANTICIPATED LOADS. THE EXCAVATION SHALL BE BEDDED WITH SUITABLE GRANULAR MATERIAL AND SHALL BE COMPACTED TO 90% MAXIMUM DRY DENSITY, OR TO REQUIREMENTS OF THE PROJECT GEOTECHNICAL ENGINEER.
- FOR COMPLETE DESIGN AND PRODUCT INFORMATION CONTACT JENSEN PRECAST.

10-01-03
Battery_Grease_Series-W.dwg
© 2003 Jensen Precast

THE DESIGN AND DETAIL OF THIS DRAWING ARE THE PROPERTY OF JENSEN PRECAST AND NOT TO BE USED EXCEPT IN CONNECTION WITH ITS OWN WORK. DESIGN AND INVENTION RIGHTS ARE RESERVED.

**JENSEN
PRECAST®**