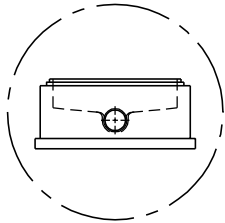
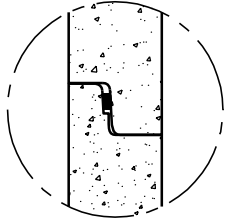


PRECAST BASE SHELLS

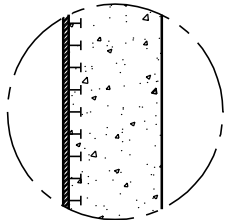
48" TO 96" I.D.



PRECAST CHANNELS AVAILABLE IN ANY STANDARD OR CUSTOM CONFIGURATION

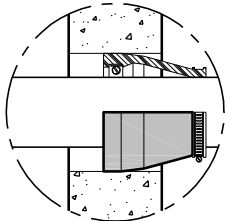


JOINT DESIGNED TO FACILITATE SEALANT PLACEMENT INSURING WATERTIGHT SEAM. JOINT DESIGN CAN VARY BY REGION.

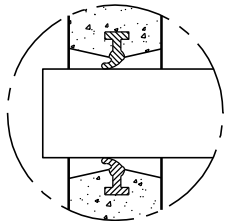


CORROSION RESISTANT LINER AVAILABLE.

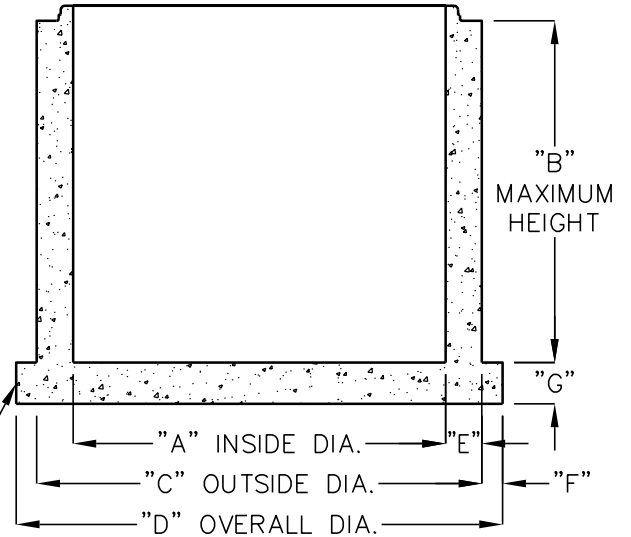
CONTACT JENSEN PRECAST FOR INFORMATION REGARDING ENGINEERING REQUIREMENTS FOR BUOYANCY ISSUES



BOOT STYLE PIPE TO MANHOLE CONNECTOR



GASKET STYLE PIPE TO MANHOLE CONNECTOR



DIMENSIONS						
"A"	"B"	"C"	"D"	"E"	"F"	"G"
48"	48"	58"	62"	5"	2"	4"
60"	72"	72"	80"	6"	4"	8"
72"	72"	86"	94"	7"	4"	8"
84"	84"	100"	**	8"	**	12"
96"	96"	114"	122"	9"	4"	10"

**CONTACT JENSEN PRECAST FOR EXTENDED BASE DETAILS.

DESIGN LOAD: MANHOLE COMPONENTS CONFORM TO ASTM C-478 AND AASHTO M-199. FLAT TOPS AND BASE SLABS ARE DESIGNED FOR H-20 TRAFFIC TO 30' STACK HEIGHT. TALLER DESIGNS AVAILABLE UPON REQUEST.

THIS PRODUCT IS AN OVER SIZED LOAD AND REQUIRES ADVANCED NOTICE FOR SHIPPING.

FLEXIBLE RESILIENT PIPE-TO-MANHOLE CONNECTORS MEETING ASTM C-923 AVAILABLE UPON REQUEST.

CUSTOM ACCESS OPENINGS OR CAST-IN HATCHES AVAILABLE.

FOR COMPLETE DESIGN AND PRODUCT INFORMATION, CONTACT JENSEN PRECAST.