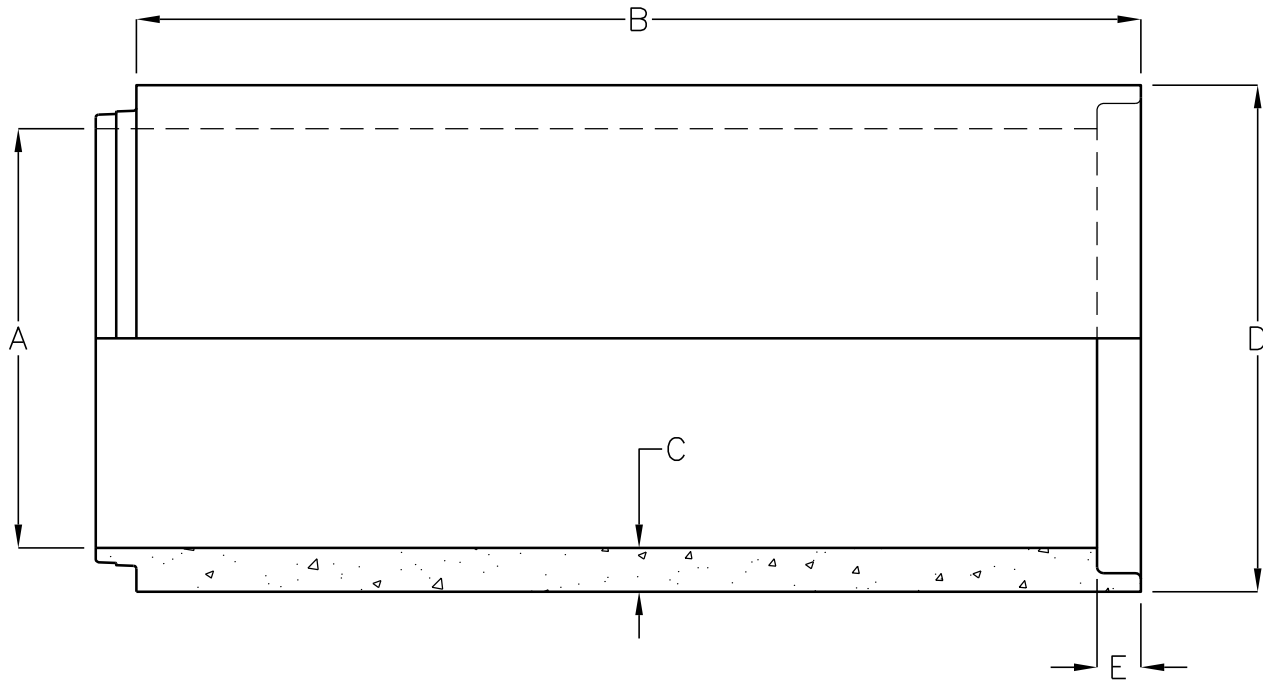


36", 42" AND 48" DIAMETER REINFORCED CONCRETE PIPE PROFILE JOINT



'A' INSIDE DIAMETER	'B' LAYING LENGTH	'C' WALL THICKNESS	'D' O.D.	'E' JOINT DEPTH	WALL TYPE	D-LOAD CLASS	WEIGHT/L.F
36"	7'-6"	4 3/4"	45 1/2"	3 3/4"	C	1000-II	633 LBS
36"	7'-6"	4 3/4"	45 1/2"	3 3/4"	C	1350-III	633 LBS
36"	7'-6"	4 3/4"	45 1/2"	3 3/4"	C	2000-IV	633 LBS
36"	7'-6"	4 3/4"	45 1/2"	3 3/4"	C	3000-V	633 LBS
42"	7'-6"	5 1/4"	52 1/2"	4 1/4"	C	1000-II	812 LBS
42"	7'-6"	5 1/4"	52 1/2"	4 1/4"	C	1350-III	812 LBS
42"	7'-6"	5 1/4"	52 1/2"	4 1/4"	C	2000-IV	812 LBS
42"	7'-6"	5 1/4"	52 1/2"	4 1/4"	C	3000-V	812 LBS
48"	7'-6"	5 3/4"	59 1/2"	4 1/4"	C	1000-II	1012 LBS
48"	7'-6"	5 3/4"	59 1/2"	4 1/4"	C	1350-III	1012 LBS
48"	7'-6"	5 3/4"	59 1/2"	4 1/4"	C	2000-IV	1012 LBS
48"	7'-6"	5 3/4"	59 1/2"	4 1/4"	C	3000-V	1012 LBS

REINFORCED CONCRETE PIPE CONFORMS TO ASTM C-76, AASHTO M-170, AASHTO M-198 AND ARIZONA DOT.

FOR COMPLETE DESIGN AND PRODUCT INFORMATION
CONTACT JENSEN PRECAST.

Jensen Precast reserves the right to make changes to product design and/or dimensions without notice. Please contact Jensen Precast whenever necessary for confirmation or advice on product design.

JENSEN
PRECAST