

# 35 PG&E

## 3'-0" X 5'-0" X 4'-6" I.D. (NOMINAL DIMENSIONS) TRANSFORMER ENCLOSURE

**PG&E #04-1611\***

RECESSED ID. PLATE  
4 TOTAL

HEAVY DUTY  
LIFT-OUT COVER  
H-20 LOADING

GALVANIZED  
STEEL FRAME

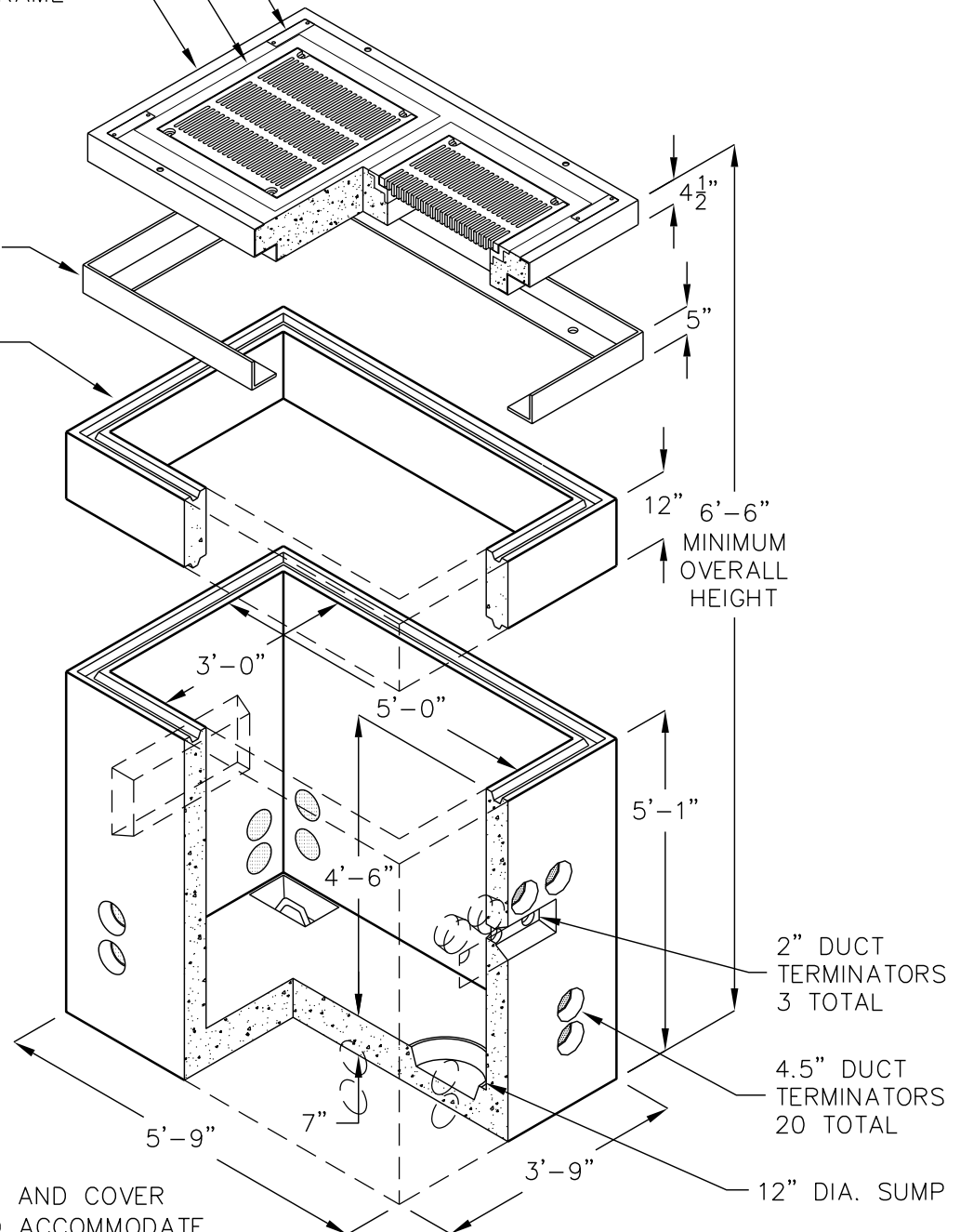
COVER ONLY  
PG&E CODE  
04-1614  
APPROX. WEIGHT  
1,500 LBS.

GALVANIZED  
STEEL FRAME

12" RISER  
PG&E CODE  
04-3362

OPTIONAL RISERS (EXTENSIONS)		
MODEL NO.		WEIGHT
35-R4	4"	270 LBS.
35-R6	6"	420 LBS.
35-R8	8"	540 LBS.
35-R12	12"	835 LBS.

BOX ONLY  
PG&E CODE  
04-3588  
APPROX. WEIGHT  
6,359 LBS.



\*CODE INCLUDES BOX, FRAME AND COVER ASSEMBLY AND 12" RISER TO ACCOMMODATE FULL TRAFFIC COVER.

DUCT TERMINATOR SIZE AND LOCATION, KNOCKOUTS, PULLING IRONS, ETC. PER CURRENT PG&E SPECIFICATIONS.

FOR COMPLETE DESIGN AND PRODUCT INFORMATION CONTACT JENSEN PRECAST.