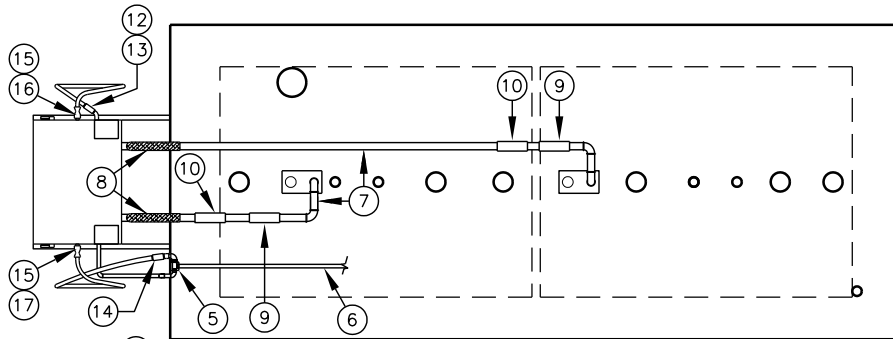
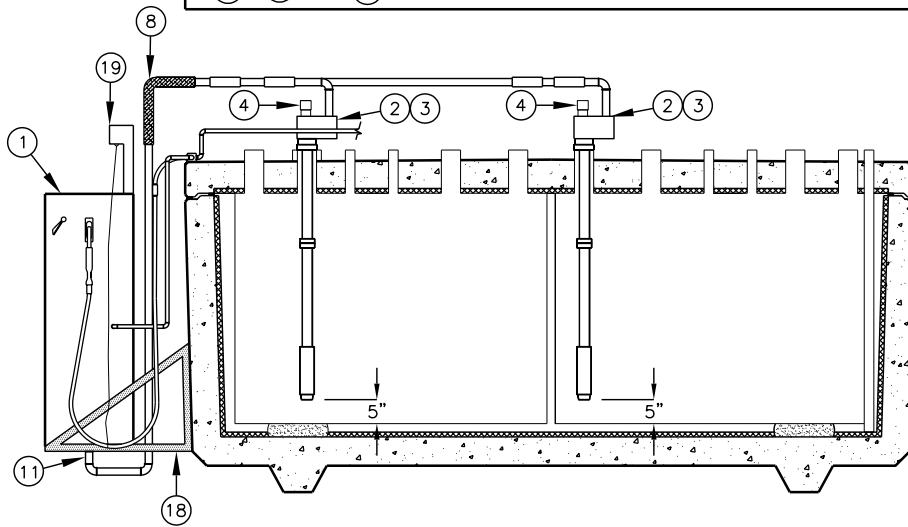


# AST PUMP PACKAGE NO. 8

## SUBMERSIBLE PUMP PACKAGE WITH REMOTE DISPENSER FOR DUAL PRODUCT TANK CONSUMER DISPLAY



**PLAN VIEW**



**ELEVATION  
(CUTAWAY)**

PACKAGE NO.	FKP-DSUB-DRC	FKP-DSUB-DRCH	FKP-GSUB-DRC	FKP-DGSUB-DRC
-------------	--------------	---------------	--------------	---------------

NO.	DESCRIPTION				
1	BENNET 4000 SERIES, COMMERCIAL DUAL PRODUCT REMOTE DISPENSER WITH WITH INTERNAL FILTER	●	●	●	●
2	1/3 H.P. SUBMERSIBLE PUMP WITH CONTROL BOX	●		●	●
3	3/4 H.P. SUBMERSIBLE PUMP WITH CONTROL BOX		●		●
4	MECHANICAL LEAK DETECTOR	●	●	●	●
5	VAPOR RECOVERY COAXIAL ADAPTER			2	●
6	3/4" DIA. VAPOR RETURN LINE (SCHEDULE 40) (TEE INTO VENT PIPE)				● ●
7	1-1/2" DIA. SUPPLY PIPE (SCHEDULE 40)	2	2	2	2
8	1-1/2" DIA. STAINLESS STEEL FLEX CONNECTOR	2	2	2	2
9	1-1/2" DIA. BALL VALVE	0	0	0	0
10	1-1/2" DIA. SOLENOID VALVE	2	2	2	2
11	1-1/2" DIA. SAFETY / SHEAR VALVE	2	2	2	2
12	3/4" DIA. HOSE, SWIVEL, AND BREAKAWAY	2			
13	1" DIA. HOSE, SWIVEL, AND BREAKAWAY		2		●
14	COAXIAL HOSE, AND BREAKAWAY			2	●
15	AUTO NOZZLE FOR DIESEL	2			
16	HIGH SPEED AUTO NOZZLE FOR DIESEL		2		●
17	STAGE II VAPOR RECOVERY AUTO NOZZLE			2	●
18	GALVANIZED PUMP BRACKET (OPTIONAL)	0	0	0	0
19	HIGH HOSE RETRACTOR W/ STAND			2	●

1. STANDARD SPEED – DUAL PRODUCT, SUBMERSIBLE PUMP PACKAGE.

2. STANDARD SPEED – DUAL PRODUCT, SUBMERSIBLE PUMP PACKAGE WITH STAGE – II VAPOR RECOVERY.

3. HIGH SPEED – DUAL PRODUCT, SUBMERSIBLE PUMP PACKAGE.

4. HIGH SPEED – DUAL PRODUCT, SUBMERSIBLE PUMP PACKAGE WITH STAGE – II VAPOR RECOVERY.

FOR COMPLETE DESIGN AND PRODUCT INFORMATION, CONTACT JENSEN PRECAST.