

35 PG&E

**3'-0" X 5'-0" X 4'-6" I.D.
(NOMINAL DIMENSIONS)
SPLICE BOX OR
EQUIPMENT ENCLOSURE**

PG&E #04-0327*

RECESSED ID. PLATE
4 TOTAL

HEAVY DUTY
LIFT-OUT COVER
H-20 LOADING

GALVANIZED
STEEL FRAME

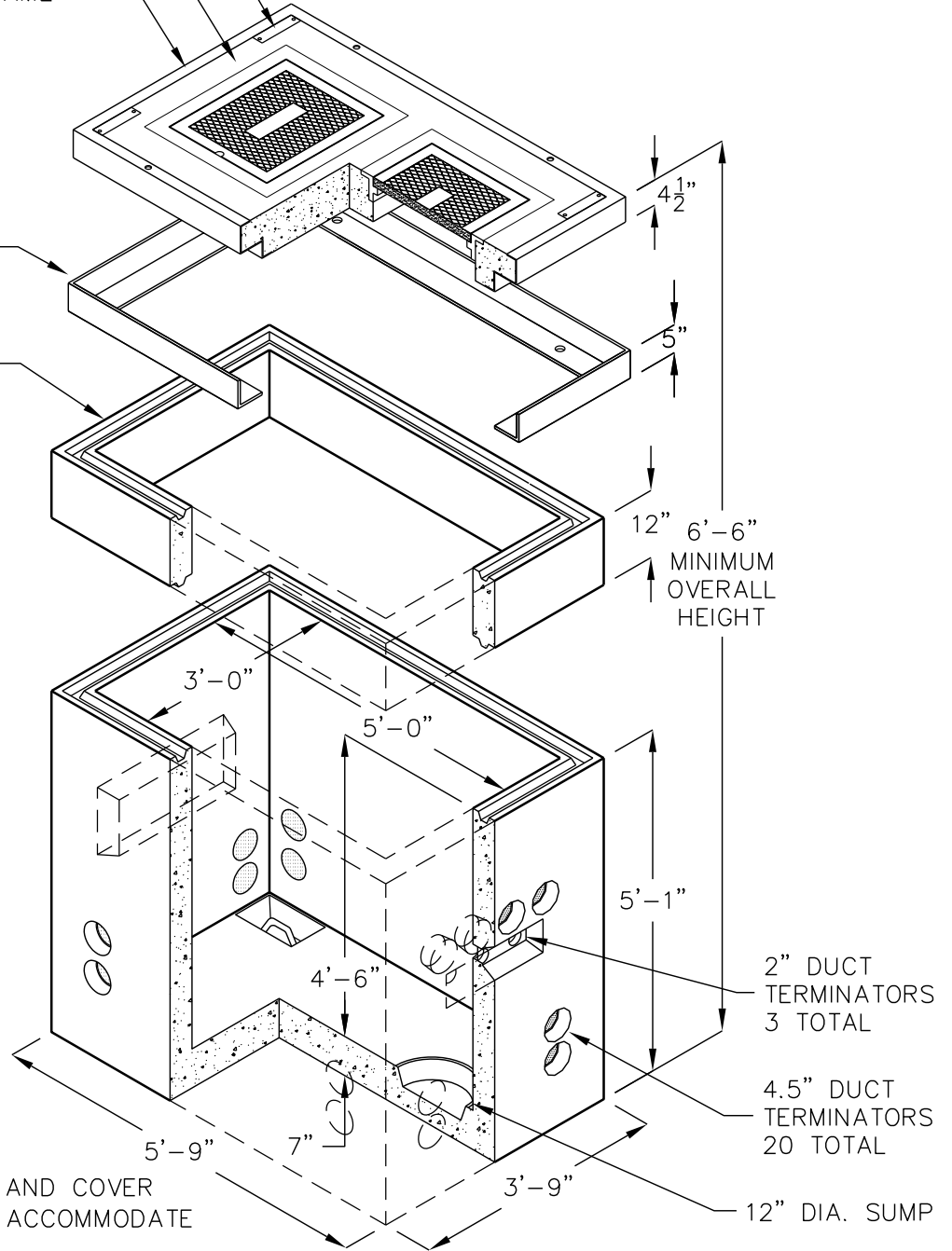
COVER ONLY
PG&E CODE
04-1616
APPROX. WEIGHT
1,550 LBS.

GALVANIZED
STEEL FRAME

12" RISER
PG&E CODE
04-3362

OPTIONAL RISERS (EXTENSIONS)		
MODEL NO.		WEIGHT
35-R4	4"	270 LBS.
35-R6	6"	420 LBS.
35-R8	8"	540 LBS.
35-R12	12"	835 LBS.

BOX ONLY
PG&E CODE
04-3588
APPROX. WEIGHT
6,359 LBS.



*CODE INCLUDES BOX, FRAME AND COVER ASSEMBLY AND 12" RISER TO ACCOMMODATE FULL TRAFFIC COVER.

DUCT TERMINATOR SIZE AND LOCATION, KNOCKOUTS, PULLING IRONS, ETC. PER CURRENT PG&E SPECIFICATIONS.

FOR COMPLETE DESIGN AND PRODUCT INFORMATION CONTACT JENSEN PRECAST.