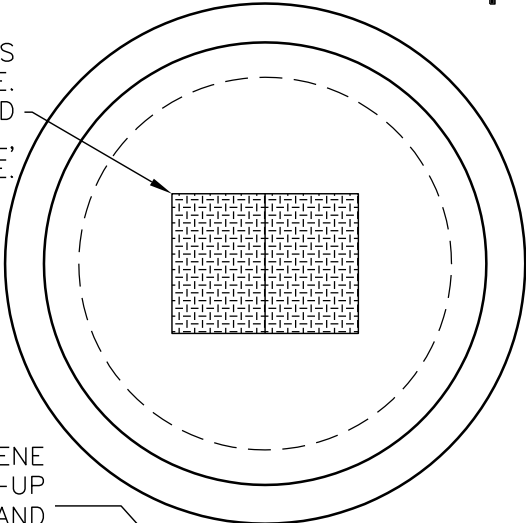


96" I.D. PUMP/LIFT STATION

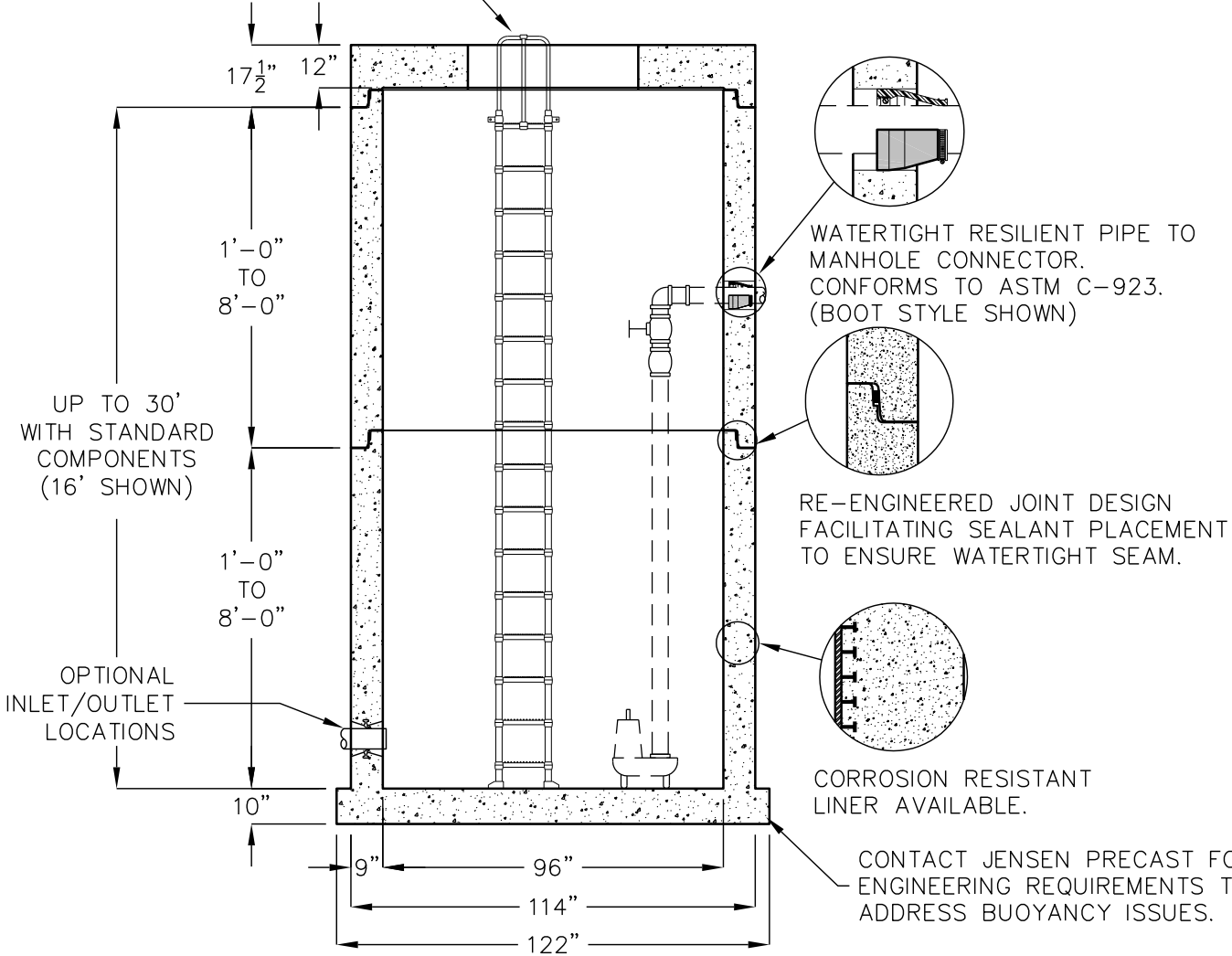
VARIOUS ACCESS OPENINGS AVAILABLE. OPTIONS INCLUDE: LOAD RATING*, MATERIAL, FINISH, TYPE OF FRAME.



CONCRETE MANHOLE COMPONENTS CONFORM TO ASTM C-478 AND AASHTO M199. FLAT TOPS AND BASE SLABS ARE DESIGNED FOR AASHTO HS-20 WHEEL LOADING.

*TRAFFIC RATED HATCHES – SUITABLE FOR USE IN OFF-STREET LOCATIONS WHERE NOT SUBJECTED TO HIGH DENSITY TRAFFIC.

O.S.H.A. APPROVED POLYPROPYLENE LADDER WITH SAFETY PULL-UP HANDRAIL. (OTHER STYLES AND FEATURES AVAILABLE)



CALL JENSEN PRECAST FOR ASSISTANCE