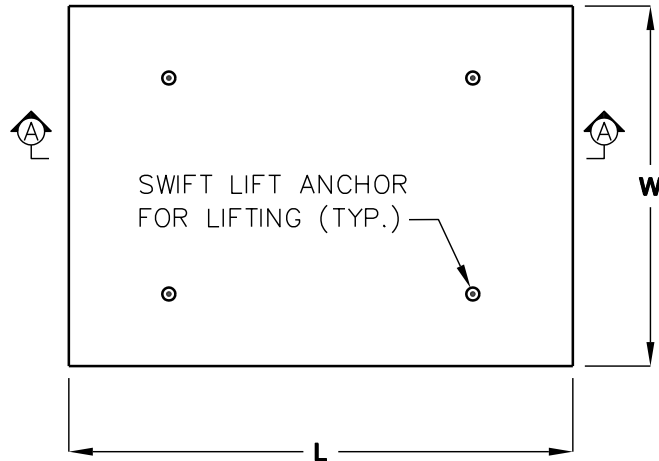
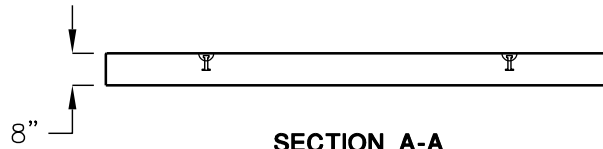


# FOUNDATION BASE

AST 6000 - 15000



**PLAN - FOUNDATION BASE**



**SECTION A-A**

1. MINIMUM CONCRETE STRENGTH:  
 $f'_c = 4,000$  PSI
2. BAR REINFORCEMENT SHALL CONFORM TO ASTM A615, GRADE 60.
3. BEARING PADS MUST BE PLACED BETWEEN THE FOUNDATION BASE AND THE ARMOR CAST TANK LEGS.
4. CUSTOM SIZE FOUNDATION BASES FOR LARGER TANKS ARE AVAILABLE.
5. SET BASE ON 6" (MIN.) 90% COMPACTION CRUSHER RUN BASE, MATERIAL PLACED MUST ALLOW FOR DRAINAGE.

FOUNDATION BASE SCHEDULE					
TANK SIZE	WIDTH (W)	LENGTH (L)	WEIGHT (LB.) EA.	THICKNESS (IN.)	BASES REQ.
6000	10'-0"	18'-0"	18,000	8"	1
8000	10'-0"	12'-0"	12,000	8"	2
10000	10'-0"	14'-6"	14,500	8"	2
12000	10'-0"	17'-6"	17,510	8"	2
14000	10'-0"	20'-0"	20,000	8"	2
15000	10'-0"	20'-0"	20,000	8"	2

FOR COMPLETE DESIGN AND PRODUCT INFORMATION CONTACT JENSEN PRECAST.