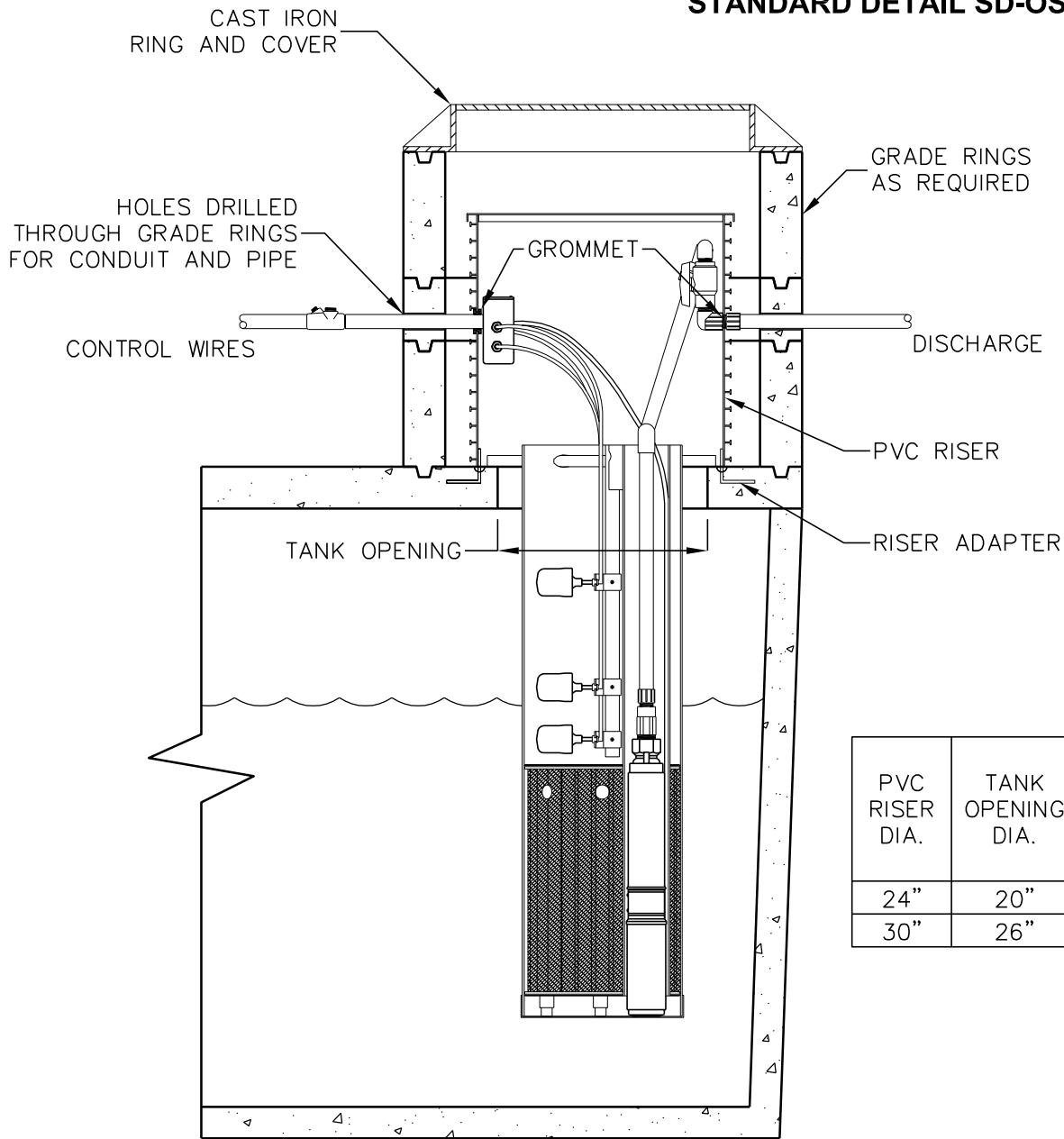


# TRAFFIC RATED GRADE RINGS WITH PVC RISERS

## STANDARD DETAIL SD-OSI-RR-2



PVC RISER DIA.	TANK OPENING DIA.	CONCRETE GRADE RINGS AND CAST IRON R&C DIA.
24"	20"	30"
30"	26"	36"

SIDE SECTION VIEW

A WATER-TIGHT PVC RISER IS BONDED TO THE TANK AT THE ADAPTER RING. THE CONTROL CONDUIT AND DISCHARGE PIPE PENETRATE THE PVC RISER THROUGH GROMMETS PROVIDING A WATER SEAL. H-20 TRAFFIC RATED CONCRETE GRADE RINGS ARE PLACED AROUND THE PVC RISER AND HOLES ARE DRILLED THROUGH THE CONCRETE FOR CONDUIT AND PIPES. GROUT HOLES AND SEAL WITH SILICONE.