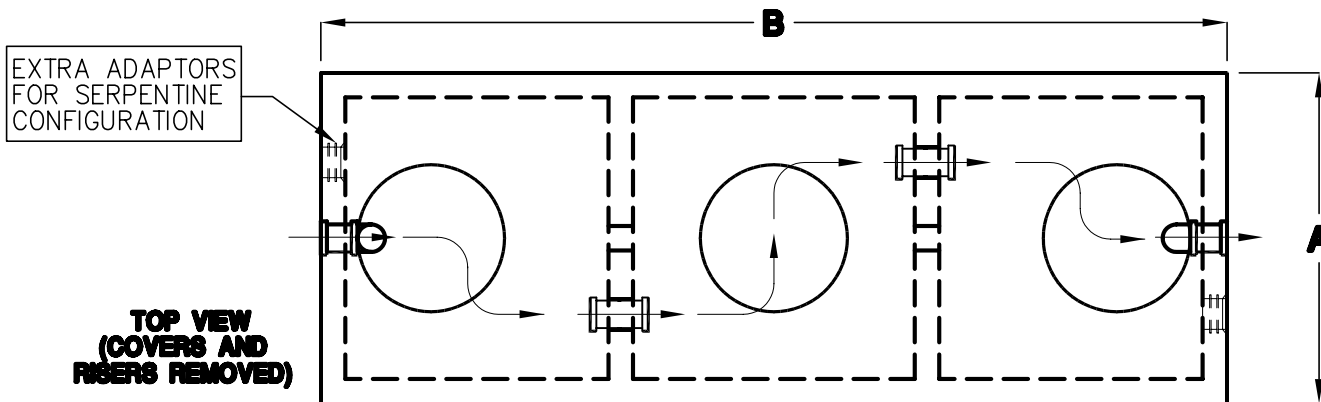
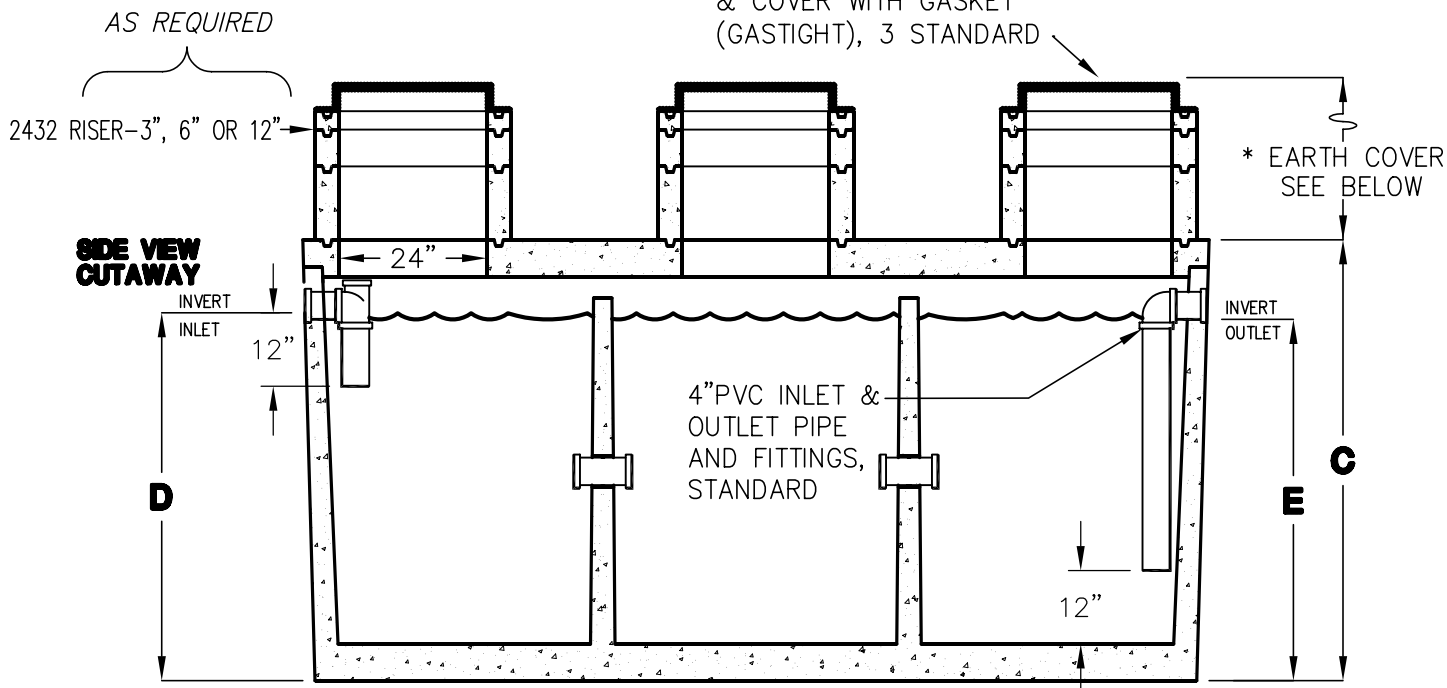


# 750-1500 GALLON EMWD SAND/OIL INTERCEPTORS

**TRAFFIC RATED ACCEPTED BY UPC®**

24" CAST IRON FRAME  
& COVER WITH GASKET  
(GASTIGHT), 3 STANDARD



MODEL NUMBER	LIQUID CAPACITY GALLONS	WIDTH 'A'	OVERALL LENGTH 'B'	TANK HEIGHT 'C'	INLET 'D'	OUTLET 'E'	MINIMUM EXCAVATION WIDTH	MINIMUM EXCAVATION LENGTH	° DEPTH OF BURY	TANK WEIGHT LBS.
KJP750SO-EMWD	750	4'-0"	8'-1"	6'-3"	5'-0"	4'-9"	5'-0"	9'-1"	4" TO 8'	10,500
KJP1000SO-EMWD	1000	5'-1"	8'-2"	6'-3"	5'-0"	4'-9"	6'-1"	9'-2"	4" TO 8'	13,000
KJP1200SO-EMWD	1200	5'-9"	8'-6"	6'-6"	5'-0"	4'-9"	6'-9"	9'-6"	4" TO 7'	16,500
KJP1500SO-EMWD	1500	5'-7"	10'-8"	6'-3"	5'-0"	4'-9"	6'-7"	11'-8"	1' TO 6'	17,700

- TANK DESIGNED FOR H-20 TRAFFIC WHEEL LOAD WITH DRY SOIL CONDITIONS (WATER TABLE BELOW TANK).
- SUITABLE NATIVE SOIL OR GRANULAR SUB-BASE SHALL BE COMPACTED AND LEVELED TO HANDLE ANTICIPATED LOADS. SEE INSTALLATION PROCEDURES SHEET FOR ADDITIONAL INFO.
- FOR COMPLETE DESIGN AND PRODUCT INFORMATION CONTACT JENSEN PRECAST.