

GREASE INTERCEPTORS

750 – 1500 GALLON

IN ACCORDANCE WITH L.A. COUNTY DRW'G 2046-0

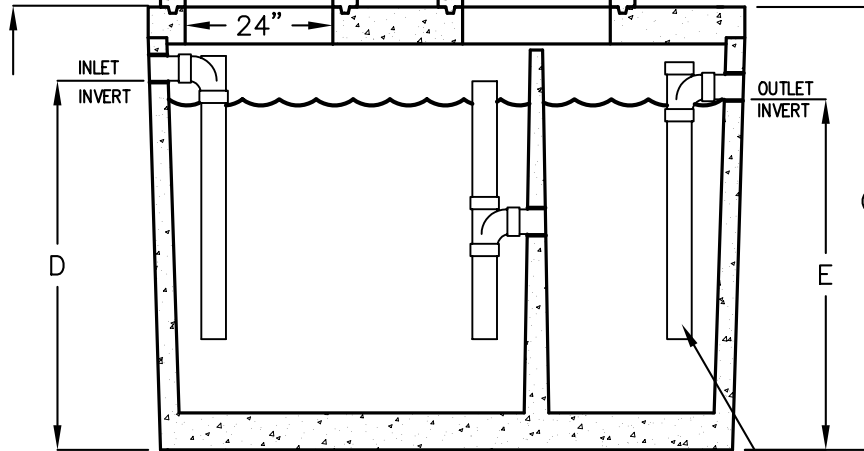
TRAFFIC RATED ACCEPTED BY UPC.

24" CAST IRON
FRAME & COVER
WITH GASKET

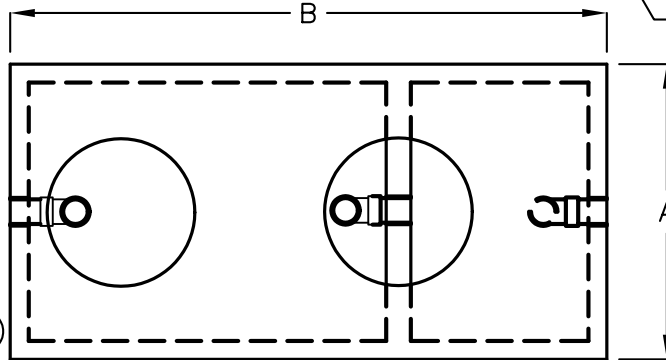
12" MIN.
WHEN SUBJECT
TO TRAFFIC

AS REQUIRED

2432 RISER-3", 6" OR 12"



SIDE VIEW (CUT AWAY)



4" PVC INLET
& OUTLET PIPE
AND FITTINGS
STANDARD

TOP VIEW

(COVERS & RISERS REMOVED)

MODEL NUMBER	LIQUID CAPACITY GALLONS	WIDTH "A"	OVERALL LENGTH "B"	TANK HEIGHT "C"	INLET "D"	OUTLET "E"	MINIMUM EXCAVATION WIDTH	MINIMUM EXCAVATION LENGTH	* DEPTH OF BURY
KJP750G-LA	750	4'-0"	8'-1"	6'-0"	5'-0"	4'-9"	5'-0"	9'-1"	1' TO 6'
KJP1000G-LA	1000	5'-1"	8'-2"	6'-0"	5'-0"	4'-9"	6'-1"	9'-2"	1' TO 6'
KJP1200G-LA	1200	5'-9"	8'-6"	6'-0"	5'-0"	4'-9"	6'-9"	9'-6"	1' TO 6'
KJP1500G-LA	1500	5'-7"	10'-8"	6'-0"	5'-0"	4'-9"	6'-7"	11'-8"	1' TO 6'

- TANK DESIGNED FOR H-20 TRAFFIC WHEEL LOAD WITH DRY SOIL CONDITIONS (WATER TABLE BELOW TANK)
- SUITABLE NATIVE SOIL OR GRANULAR SUB-BASE SHALL BE COMPACTED AND LEVELED TO HANDLE ANTICIPATED LOADS. SEE INSTALLATION PROCEDURES SHEET FOR ADDITIONAL INFO.
- FOR COMPLETE DESIGN AND PRODUCT INFORMATION CONTACT JENSEN PRECAST.

THE DESIGN AND DETAIL OF THIS DRAWING ARE THE PROPERTY OF JENSEN PRECAST AND NOT TO BE USED EXCEPT IN CONNECTION WITH ITS OWN WORK. DESIGN AND INVENTION RIGHTS ARE RESERVED.