

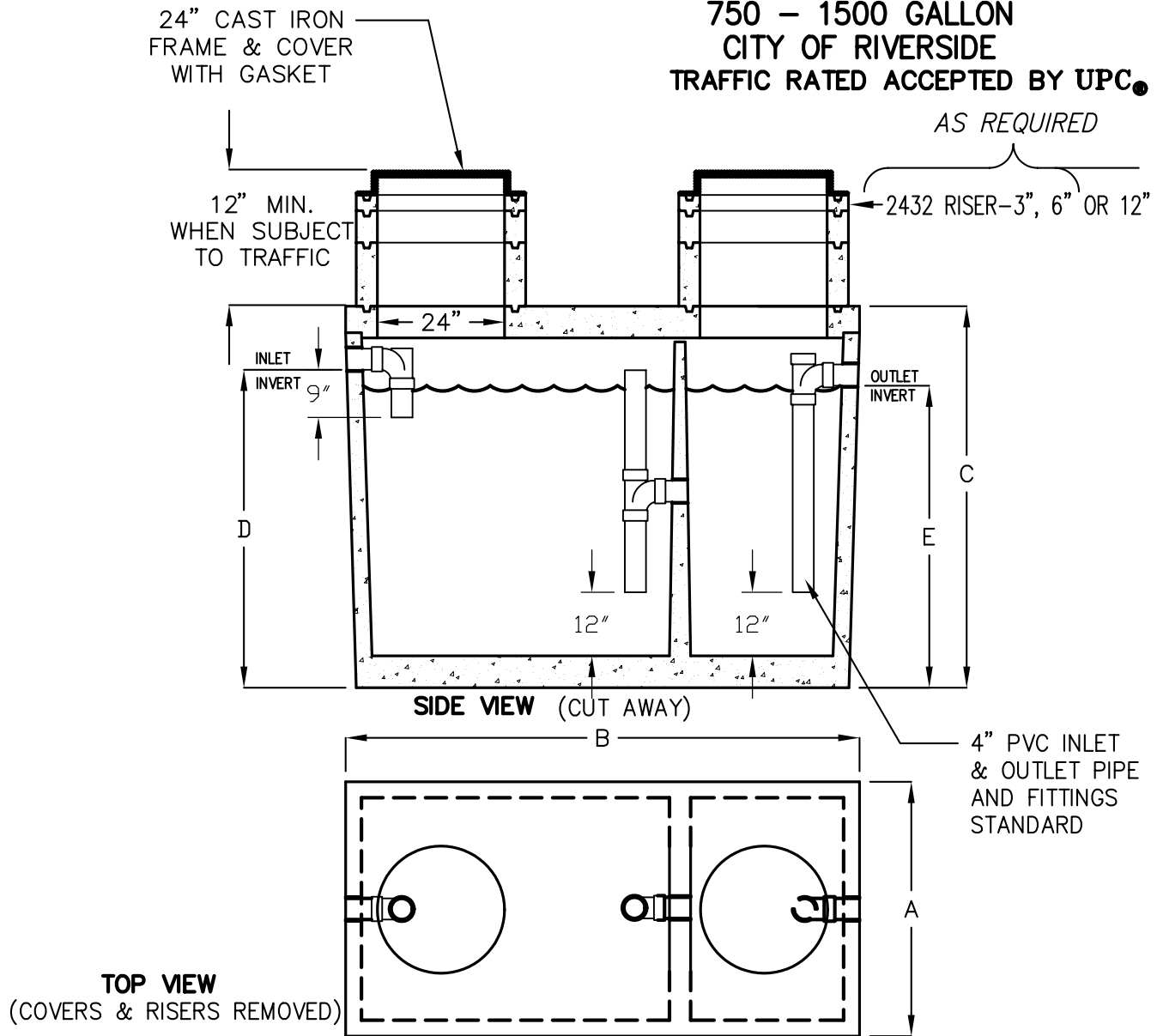
# GREASE INTERCEPTORS

750 – 1500 GALLON

CITY OF RIVERSIDE

TRAFFIC RATED ACCEPTED BY UPC.

AS REQUIRED



| MODEL NUMBER | LIQUID CAPACITY GALLONS | WIDTH "A" | OVERALL LENGTH "B" | TANK HEIGHT "C" | INLET "D" | OUTLET "E" | MINIMUM EXCAVATION WIDTH | MINIMUM EXCAVATION LENGTH | * DEPTH OF BURY |
|--------------|-------------------------|-----------|--------------------|-----------------|-----------|------------|--------------------------|---------------------------|-----------------|
| KJP750G-RIV  | 750                     | 4'-0"     | 8'-1"              | 6'-0"           | 5'-0"     | 4'-9"      | 5'-0"                    | 9'-1"                     | 1' TO 6'        |
| KJP1000G-RIV | 1000                    | 5'-1"     | 8'-2"              | 6'-0"           | 5'-0"     | 4'-9"      | 6'-1"                    | 9'-2"                     | 1' TO 6'        |
| KJP1200G-RIV | 1200                    | 5'-9"     | 8'-6"              | 6'-0"           | 5'-0"     | 4'-9"      | 6'-9"                    | 9'-6"                     | 1' TO 6'        |
| KJP1500G-RIV | 1500                    | 5'-7"     | 10'-8"             | 6'-0"           | 5'-0"     | 4'-9"      | 6'-7"                    | 11'-8"                    | 1' TO 6'        |

- TANK DESIGNED FOR H-20 TRAFFIC WHEEL LOAD WITH DRY SOIL CONDITIONS (WATER TABLE BELOW TANK)
- SUITABLE NATIVE SOIL OR GRANULAR SUB-BASE SHALL BE COMPACTED AND LEVELED TO HANDLE ANTICIPATED LOADS. SEE INSTALLATION PROCEDURES SHEET FOR ADDITIONAL INFO.
- FOR COMPLETE DESIGN AND PRODUCT INFORMATION CONTACT JENSEN PRECAST.

THE DESIGN AND DETAIL OF THIS DRAWING ARE THE PROPERTY OF JENSEN PRECAST AND NOT TO BE USED EXCEPT IN CONNECTION WITH ITS OWN WORK. DESIGN AND INVENTION RIGHTS ARE RESERVED.