

8'-0" X 10'-0" LADWP WATER VAULT X 84" DEEP

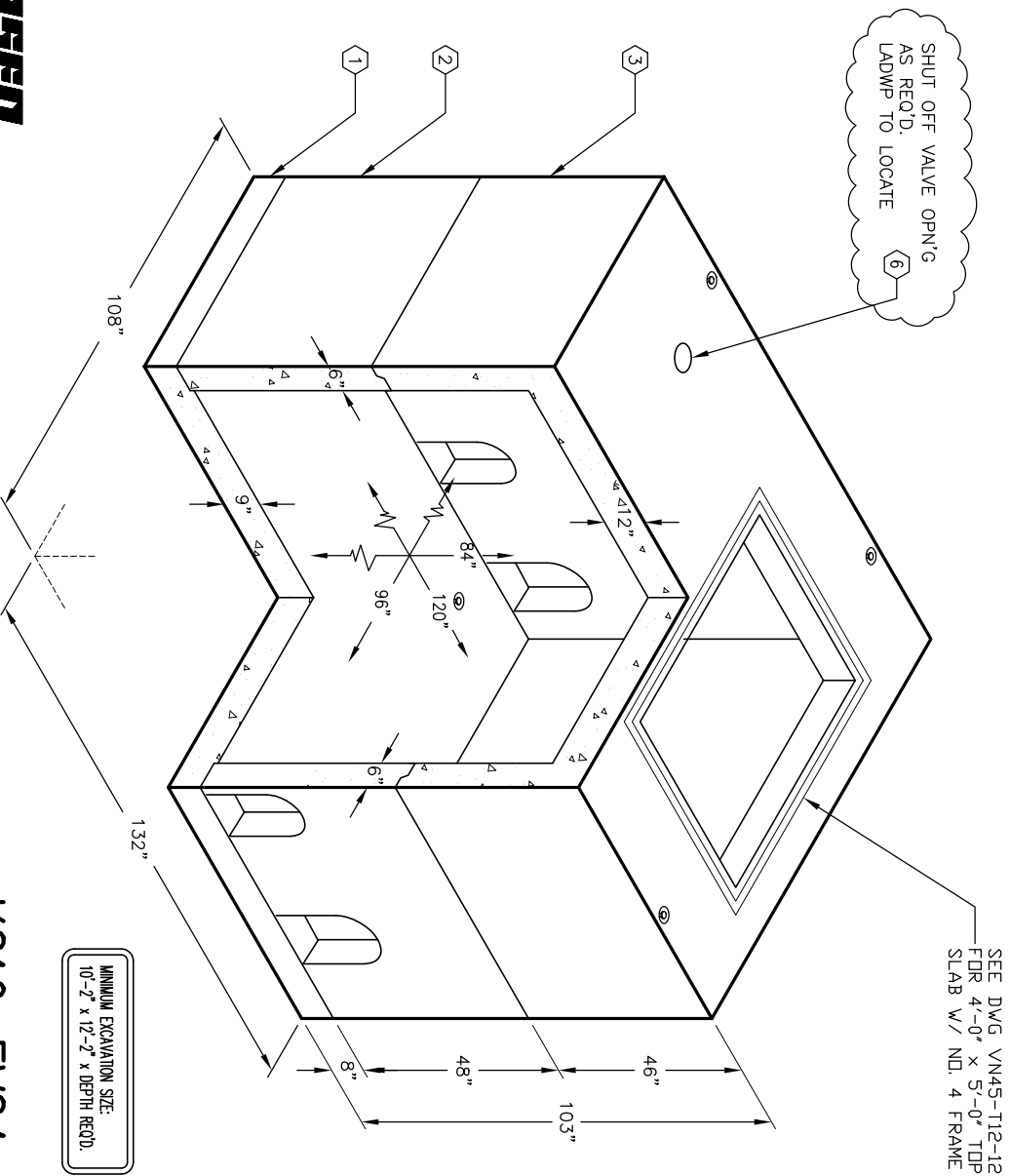
NOTES:

- VAULT DESIGNED IN ACCORDANCE WITH AASHTO H-20-44 TRAFFIC BRIDGE LOADING USING 5,500 PSI COMPRESSIVE STRENGTH CONCRETE AND 60,000 PSI YIELD STRENGTH ASTM A-706 STEEL REINFORCEMENT PER CALCS.
- VAULT TO BE PLACED ON A MIN. 6" BASE OF CRUSHER RUN FOR EASE OF INSTALLATION AND EVEN LOAD DISTRIBUTION.
- LIMITS OF COVER OVER ROOF SECTION IS 1'-0" TO 4'-0"
- CONCRETE MIX USED IN POURING THIS PRODUCT SHALL USE FLY-ASH AS AN ADMIXTURE.
- EACH CONCRETE SECTION SHALL BE MARKED ON THE INSIDE & OUTSIDE WITH "JENSEN PRECAST", THE DESIGNATION "DWP/FA", AND THE DATE OF POUR.
- EACH CONCRETE SECTION SHALL HAVE CAST-IN ON THE INSIDE "JENSEN PRECAST", THE YEAR, AND THE DESIGNATION "FA".

1. UV810-B-12, 9" THICK BASE SLAB, WT. 11,516 lbs.
2. UV810-L48-12, LOWER SECTION, WT. 17,417 lbs.
3. UV810-T36-12, 10" THICK TOP SECTION, WT. 25,858 lbs.
4. 14" x 15" DIA. SLUMP x 6 1/2" DEEP. LOCATE AS FOLLOWS:
BASE SLAB (1) TABLE MTD.
- 5A. 12" x 21" THRU SLOT. LOCATE AS FOLLOWS: SIDE WALL (4) EACH, SHELL MTD.
- 5B. 14" x 22" THRU SLOT. LOCATE AS FOLLOWS: SIDE WALL (2) EACH, SHELL MTD.
6. 6" DIA. THRU HOLE. LOCATE AS FOLLOWS: ROOF SLAB (2) TABLE MTD.

ORDERING INFORMATION:

K810FV84-12 FOR ASSEMBLY AS SHOWN.
PER LADWP SPEC. C-5208 G1, R1
TOTAL WEIGHT OF ASSEMBLY SHOWN IS 54,791lbs.

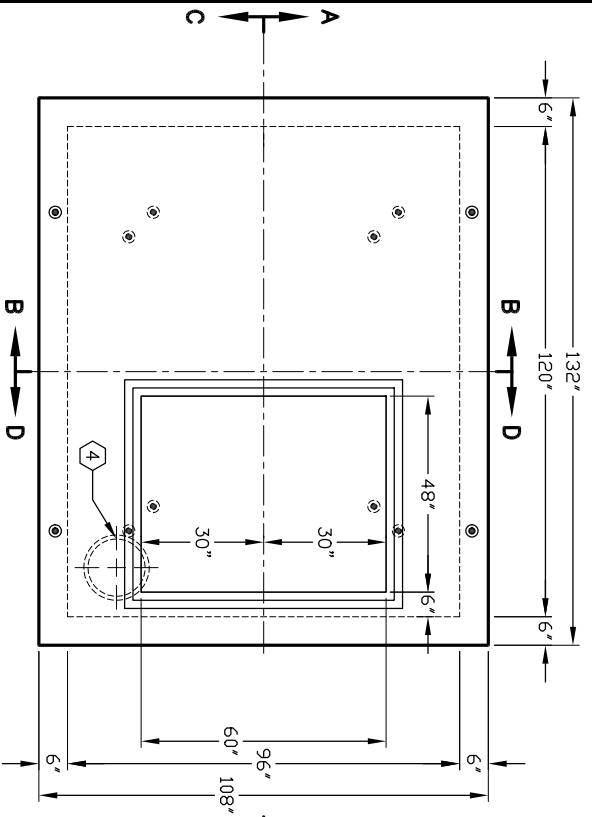
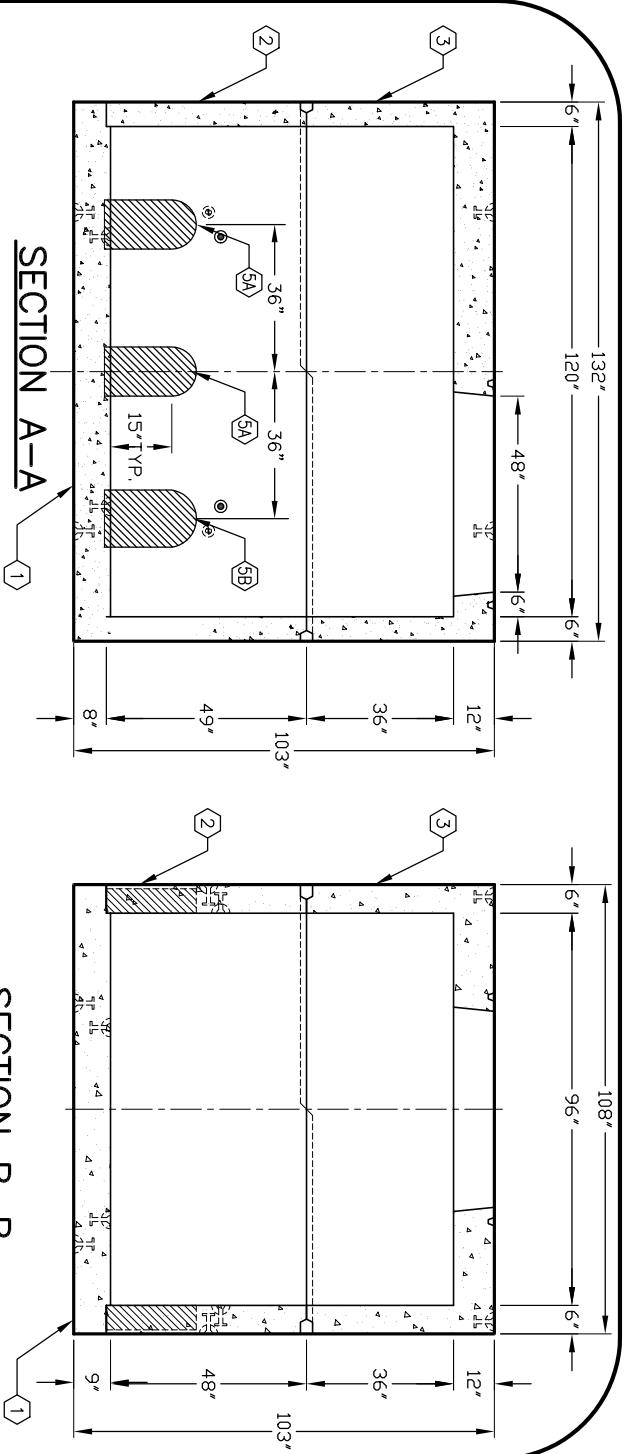


AUTOCAD REL. 14

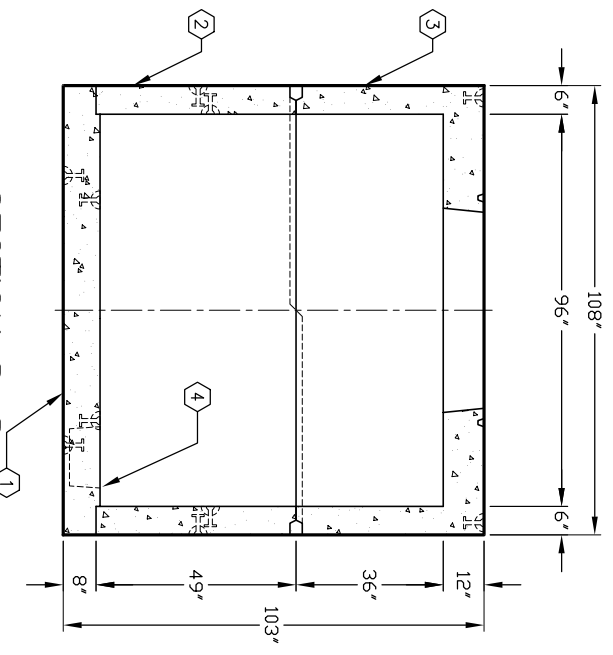
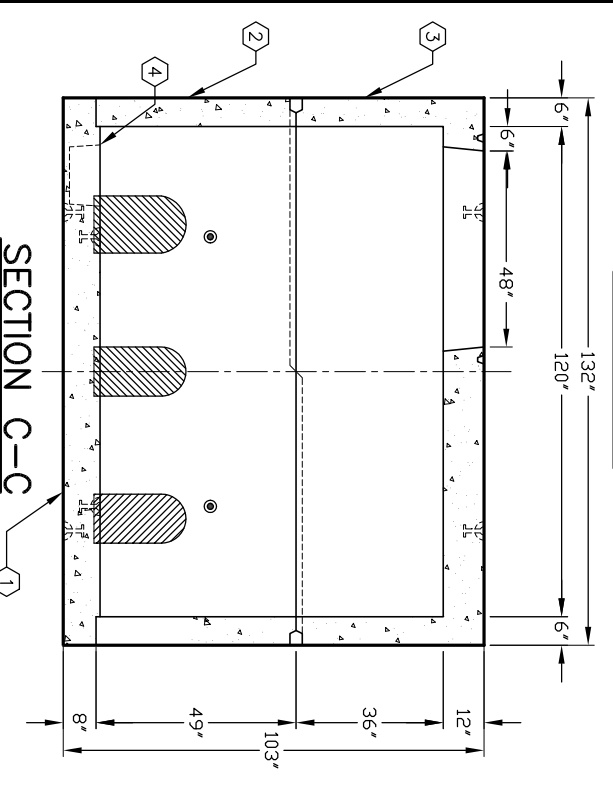
K810-FV84-12

PER LADWP SPEC. C-5208

03-01-02



LADWP TO VERIFY SIZE & LOCATION OF WALL OPEN'GS AT TIME OF ORDER.



#	DATE	DESCRIPTION	BY

K810-FV84-12

PER LADWP SPEC. C-5208

03-01-02