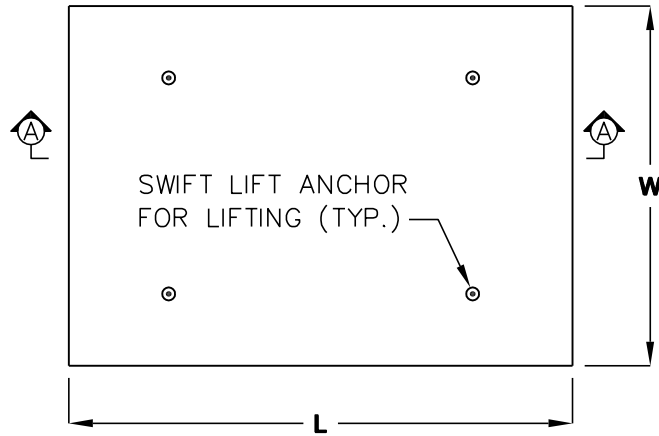
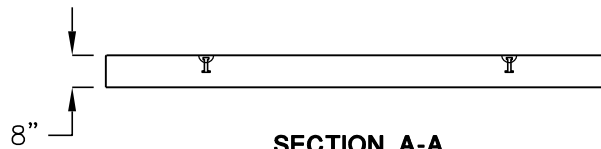


FOUNDATION BASE

AST 300 - 1000



PLAN - FOUNDATION BASE



SECTION A-A

1. MINIMUM CONCRETE STRENGTH:
 $f'_c = 4,000$ PSI
2. BAR REINFORCEMENT SHALL CONFORM TO ASTM A615, GRADE 60.
3. BEARING PADS MUST BE PLACED BETWEEN THE FOUNDATION BASE AND THE ARMOR CAST TANK LEGS.
4. CUSTOM SIZE FOUNDATION BASES FOR LARGER TANKS ARE AVAILABLE.
5. SET BASE ON 6" (MIN.) 90% COMPACTION CRUSHER RUN BASE, MATERIAL PLACED MUST ALLOW FOR DRAINAGE.

FOR COMPLETE DESIGN AND PRODUCT INFORMATION CONTACT JENSEN PRECAST.

STANDARD FOUNDATION BASE SCHEDULE				
TANK SIZE	WIDTH (W)	LENGTH (L)	WEIGHT (LB.)	THICKNESS (IN.)
300	7'-6"	8'-3"	6,200	8"
500	7'-6"	8'-3"	6,200	8"
1,000	7'-6"	13'-8"	10,260	8"
LOW PROFILE FOUNDATION BASE SCHEDULE				
TANK SIZE	WIDTH (W)	LENGTH (L)	WEIGHT (LB.)	THICKNESS (IN.)
300	8'-6"	6'-10"	5,810	8"
500	8'-6"	8'-10"	7,512	8"
1,000	8'-6"	14'-8"	12,473	8"