

5'-0" x 8'-6" VERIZON MANHOLE x 6'-6" DEEP

NOTES:

- MANHOLE DESIGNED IN ACCORDANCE WITH AASHTO H-20-44 TRAFFIC BRIDGE LOADING USING 5,500 PSI [37.92MPa] COMPRESSIVE STRENGTH CONCRETE AND 80,000 PSI [413.2MPa] YIELD STRENGTH ASTM A-706 STEEL REINFORCEMENT PER CALCS. #50695.
- MANHOLE TO BE PLACED ON A 6" BASE OF CRUSHER RUN FOR EASE OF INSTALLATION AND EVEN LOAD DISTRIBUTION.
- LIMITS OF COVER OVER ROOF SECTION IS 1'-6" TO 4'-0".
- ALL WALLS AND CEILING SHALL BE PAINTED WHITE.
- THE FOLLOWING MATERIAL TO BE SHIPPED WITH VALU:
 - (a) 7/8" x 1 3/4" GASKET (45 FT REQ'D.),
 - (b) 1/2" x 2" HEX HEAD PLATED BOLTS (56 REQ'D.),
 - (c) 1/2" x 1 1/4" HEX HEAD PLATED BOLTS (32 REQ'D.),
 - (d) 1/2" HEAVY HEX HEAD GALVANIZED NUT (52 REQ'D.),
 - (e) 1/2" FLAT WASHER PLATED (44 REQ'D.),
 - (f) 1/4" x 3/4" HEX HEAD PLATED BOLTS (8 REQ'D.),
 - (g) 1/4" FENDER WASHERS PLATED (16 REQ'D.),
 - (h) BONDING REBORN (2 @ 8'-0" LONG),
 - (i) 12" CORNER BRACKETS - EVEN (16 REQ'D.),
 - (j) 14 HOLE CABLE RACKS (4 REQ'D.),
 - (k) 22 HOLE CABLE RACKS (8 REQ'D.),
 - (l) 27 HOLE CABLE RACKS (8 REQ'D.),
 - (m) 5 SLIPSPORTS (16 REQ'D.),
 - (n) A-3383 LADDER STEPS (2 REQ'D.),
 - (o) A-3382 LADDER 8 (1 REQ'D.).

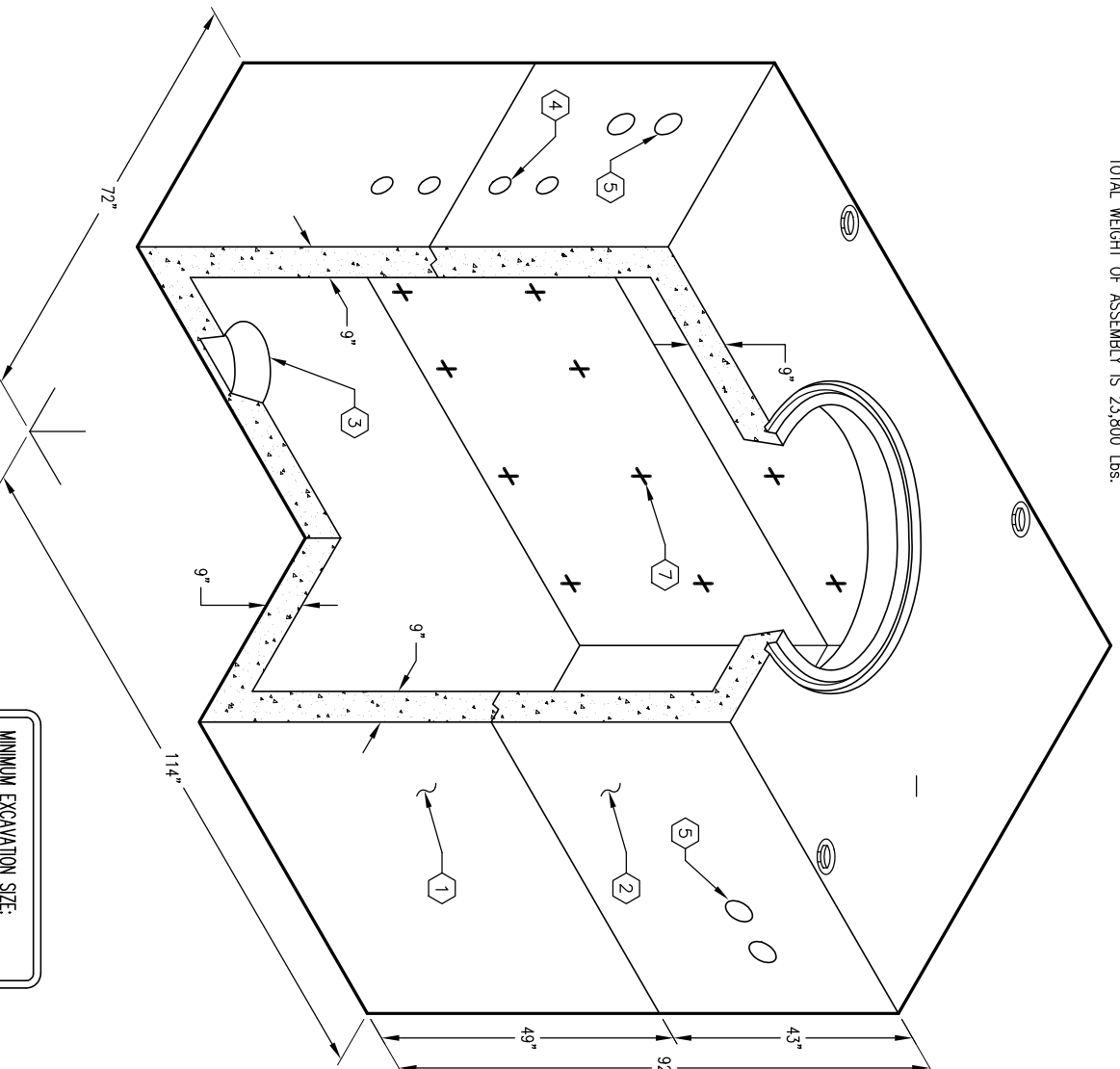
GENERAL NOTES:

1. Minimum soil bearing capacity is hereby assumed to be 2000 PSF unless otherwise documented by a geotechnical report that shall be provided to Jensen Precast by the end user. Jensen Precast shall not be held responsible for the soil bearing capacity. Installation of Manholes, Vaults, Handholes, Meter Boxes etc. will be as per Jensen installation procedures.
2. Structural modification to the Jensen line of products is not permitted without prior written approval from Jensen Engineering Department.
3. Do not scale the drawings, verify all dimensions including rough openings, if any discrepancies are found, notify the Jensen Engineer immediately.
4. The Jensen Engineer will interpret the intent of the drawings in case of possible conflict or discrepancy.
5. Permissible Variations: Dimensional Tolerances - The length, width, height, or dia. measurements of the structure when measured on the inside surfaces shall not deviate from design dimensions by more than the following:
 Dimensions: Tolerance:
 0 to 5 Feet 1/4"
 5 to 10 Feet 3/8"
 10 to 20 Feet as agreed upon between the supplier and purchaser.
 Squariness Tolerance: he inside of the precast concrete component shall be square as determined by diagonal measurements. The difference between such measurements shall not exceed the following:
 Measured Length: Allowable Difference
 0 to 10 Feet 1/2"
 10 to 20 Feet 3/4"
 between the supplier and purchaser.
- 6.
- 7.

1. UVS86-B42-13 42" BOTTOM SECTION, WT. 12,800 Lbs.
2. UVS86-136-13 36" TOP SECTION, WT. 11,000 Lbs
3. 12" DIA. x 13" DIA. SUMP x 4 1/2" LOCATE AS FOLLOWS: BOTTOM SECTION (1) CORE MID.
4. 4" DIA. CONTERM SCH-40. LOCATE AS FOLLOWS: BOTTOM SECTION (8) SHELL MID.; ROOF SECTION (8) SHELL MID.
5. 5" DIA. x 6" KNOCKOUT x 4" DEEP. LOCATE AS FOLLOWS: ROOF SECTION (16) SHELL MID.
6. 7/8" DIA. x 3 3/8" GALVANIZED PULL IRON. LOCATE AS FOLLOWS: BOTTOM SECTION (2) CORE MID.
7. 1/2" 1-5000 PLASTIC RACKING INSERT. LOCATE AS FOLLOWS: BOTTOM SECTION (28) CORE MID.; ROOF SECTION (20) CORE MID.
8. 1/2" TREADED BRONZE INSERT BRAZED TO STRUCTURAL STEEL REBAR. "GRD" SHALL BE STENCILED IN RED LETTERS ON THE CONCRETE ABOVE EACH INSERT. LOCATE AS FOLLOWS: ROOF SECTION (8) CORE MID.
9. 1/4" TREADED BRONZE INSERT WITH TAIL BRAZED TO STRUCTURAL STEEL REBAR. "GRD" SHALL BE STENCILED IN RED LETTERS ON THE CONCRETE ABOVE EACH INSERT. LOCATE AS FOLLOWS: ROOF SECTION (2) CORE MID.; BOTTOM SECTION (2) CORE MID.
10. 1/4" P-15-1 INSERT. LOCATE AS FOLLOWS: BOTTOM SECTION (2) CORE MID.; ROOF SECTION (2) CORE MID.

ORDERING INFORMATION:

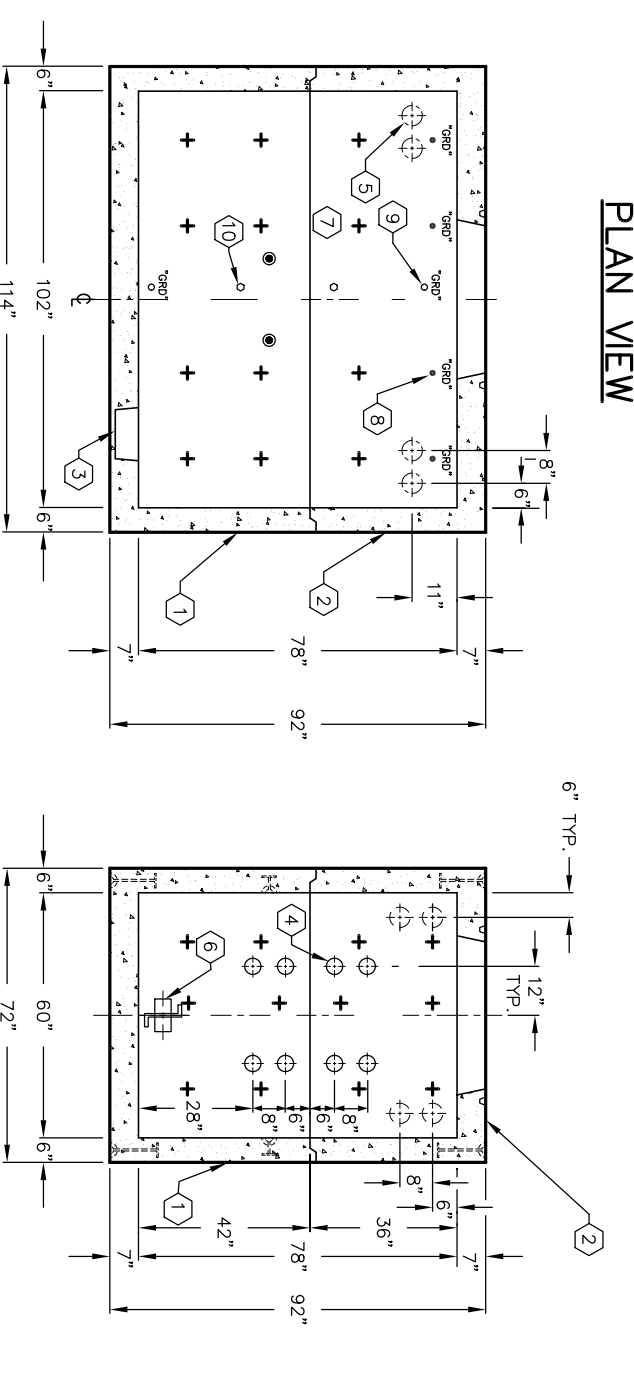
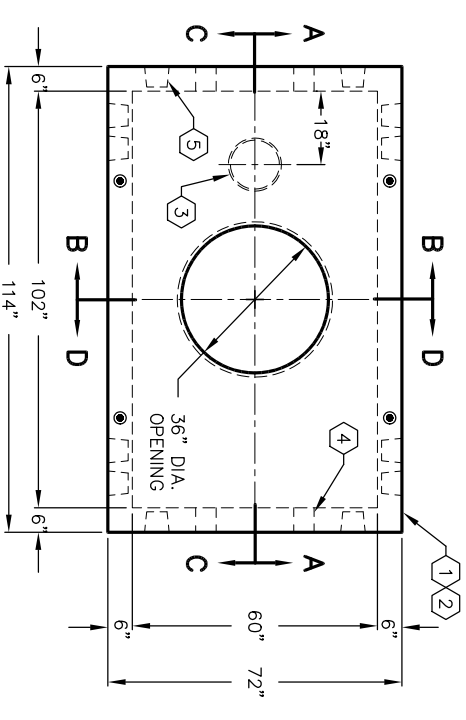
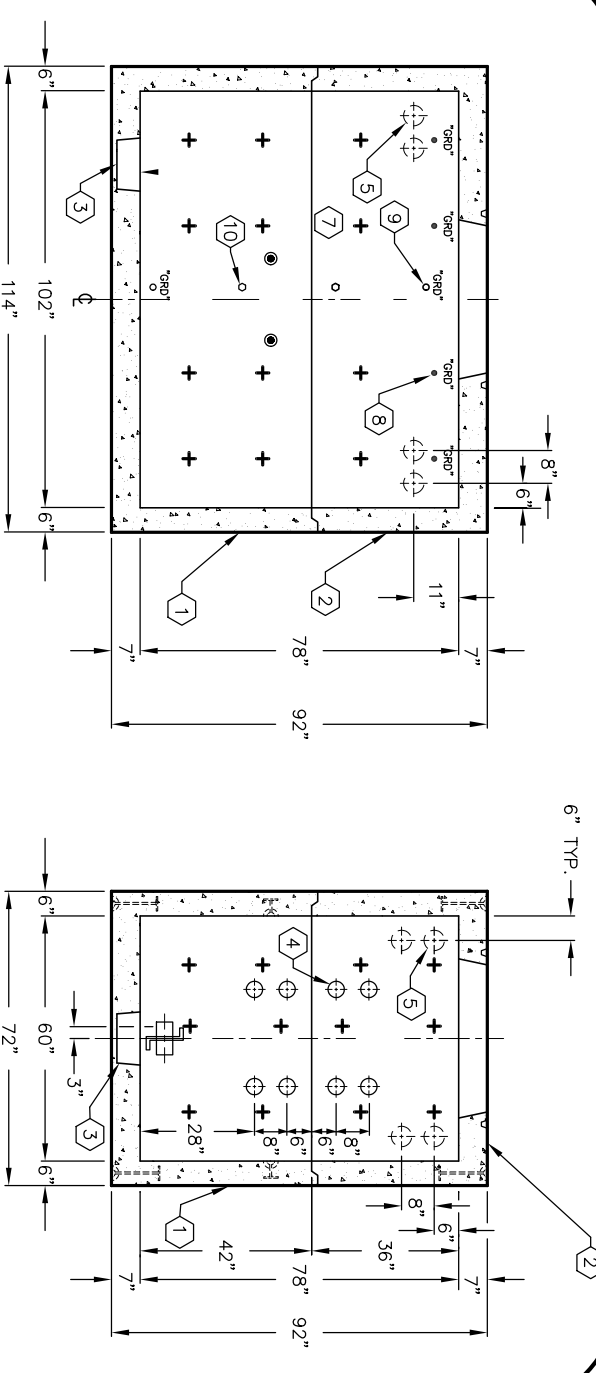
K586-FM78-13 FOR ASSEMBLY AS SHOWN.
 APPROVED FOR VERIZON SPECS.
 TOTAL WEIGHT OF ASSEMBLY IS 23,800 Lbs.



MINIMUM EXCAVATION SIZE:
 7'-0" x 10'-6" x DEPTH REQ'D.

K586-FM78-13

AUTOCAD REL. 14



#	DATE	DESCRIPTION	BY

K586-FM78-13

PER VERIZON SPEC.

03-01-02

