

# 5'-0" x 10'-6" VERIZON INTERCEPT MANHOLE x 6'-6" DEEP

**NOTES:**

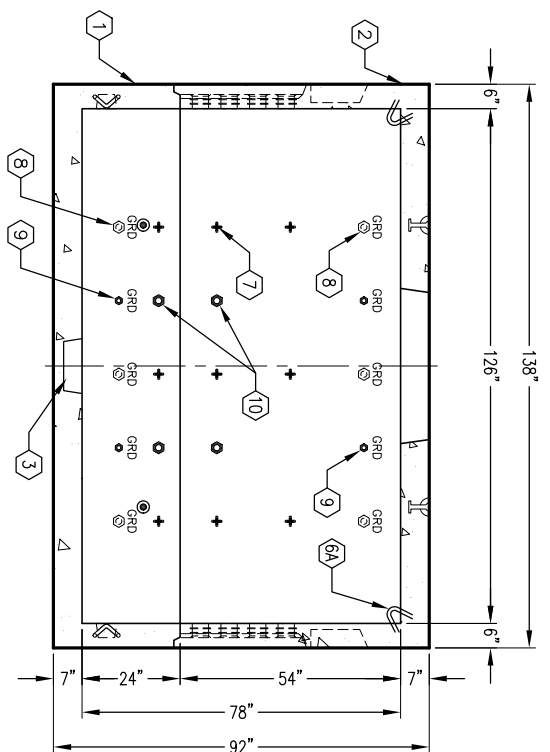
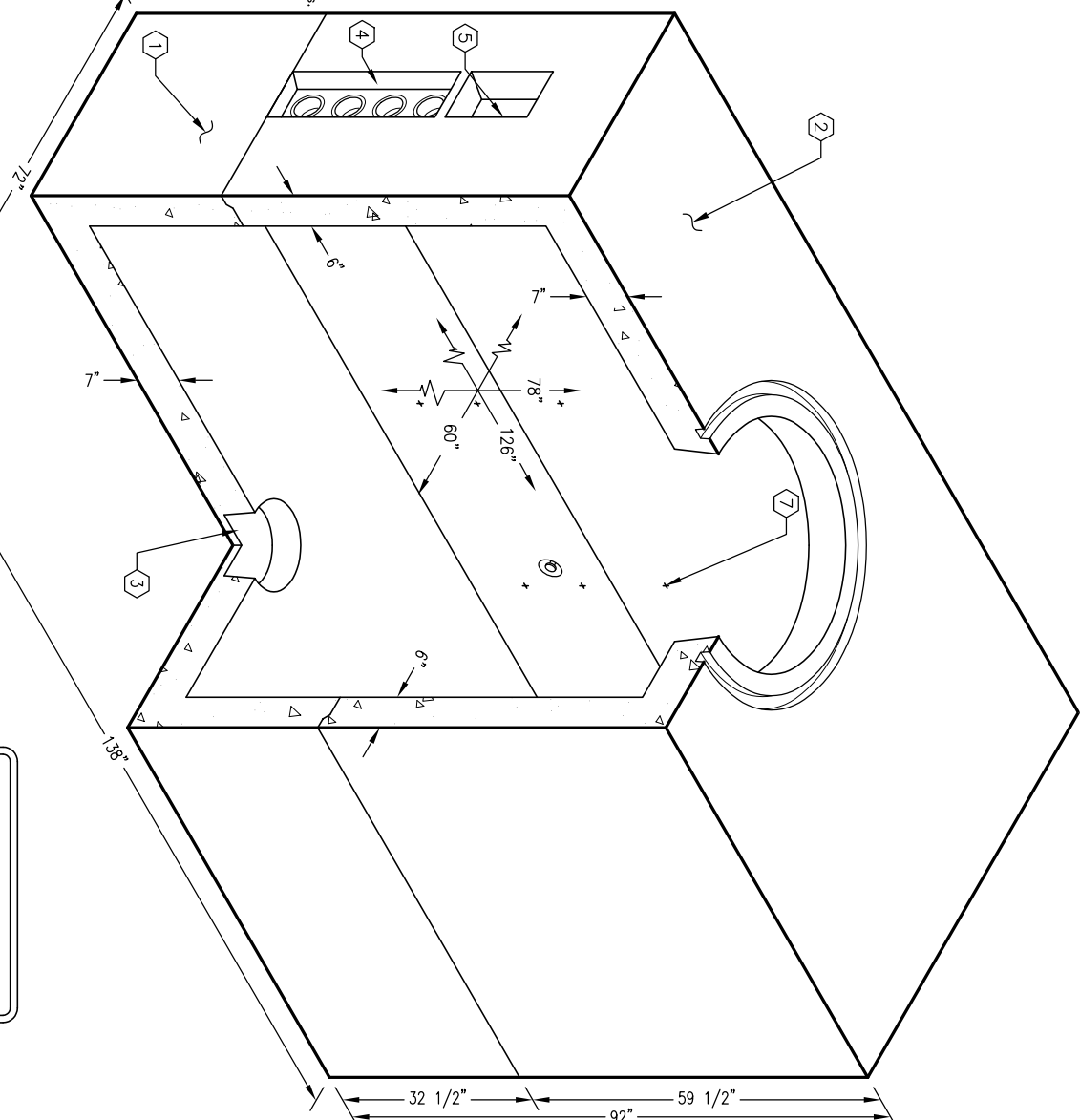
- MANHOLE DESIGNED IN ACCORDANCE WITH AASHTO H-20-44 TRAFFIC BRIDGE LOADING USING 5,500 PSI [37.92MPa] COMPRESSIVE STRENGTH CONCRETE AND 60,000 PSI [413.92MPa] YIELD STRENGTH ASTM A-706 STEEL REINFORCEMENT PER CALCS. #30347.
  - MANHOLE TO BE PLACED ON A MIN. 6" BASE OF CRUSHER RUN FOR EASE OF INSTALLATION AND EVEN LOAD DISTRIBUTION.
  - LIMITS OF COVER OVER ROOF SECTION IS 1'-0" TO 5'-0".
  - ALL WALLS AND CEILINGS SHALL BE PAINTED WHITE.
- THE FOLLOWING MATERIAL TO BE SHIPPED WITH THE MANHOLE
- a) 7/8" x 1.3/4" GASKET (45 FT. REQ'D.).
  - b) 1/2" x 2" HEX HEAD PLATED BOLTS (32 REQ'D.).
  - c) 1/2" x 1.1/4" HEX HEAD PLATED BOLTS (24 REQ'D.).
  - d) 1/2" HEAVY HEX HEAD GALV. NUT (24 REQ'D.).
  - e) 1/4" x 3/4" HEX HEAD PLATED BOLTS (16 REQ'D.).
  - f) 1/4" FENDER WASHER PLATED (32 REQ'D.).
  - g) BONDING RIBBON (28 FT.).
  - h) 14 HOLE CABLE RACKS (8 REQ'D.).
  - i) 32 HOLE CABLE RACKS (8 REQ'D.).
  - j) S SUPPORTS (30 REQ'D.).
  - k) A-3383 LADDER STEPS (2 REQ'D.).
  - l) A-3600 LADDER 8' (1 REQ'D.).

**ORDERING INFORMATION:**

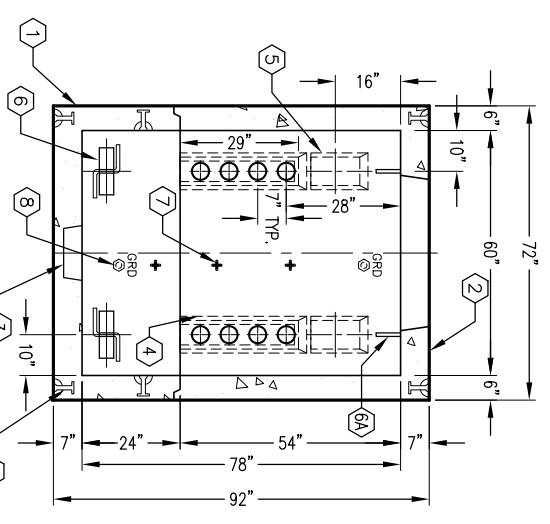
K5106-FM78-131 FOR ASSEMBLY AS SHOWN.  
 APPROVED FOR VERIZON SPEC. GTS-8395.  
 TOTAL WEIGHT OF ASSEMBLY SHOWN AS 27,187 Lbs.

1. UVS106-B24-13. 24" BOTTOM SECTION. WT. 10,938 Lbs.
2. UVS106-T54-13. 54" TOP SECTION. WT. 16,249 Lbs.
3. 12" x 13" DIA. SUMP x 5 1/2" DEEP. BOTTOM SECTION (1) CORE MTD.
4. 7" x 29" K.O. x 2 1/2" DEEP W/(4) 4" DIA. TERMINATORS SCH.40, & 1" x 1" V-SLOT AROUND K.O. TOP SECTION (4) SHELL MTD. 7" x 12" K.O. x 4 1/2" DEEP. DRAFT T=2", S1-S2=1"
5. B=0". TOP SECTION (4) SHELL MTD.
6. 7/8" DIA. x 3 3/8" GALV. PULL IRON. BTM SECTION (4) CORE MTD.
7. 7/8" DIA. x 9" GALV. PULL IRON TOP SECTION (4) CORE MTD.
8. + 1/2" PLASTIC RACKING INSERT. BOTTOM SECTION (8) CORE MTD.
9. MTD. TOP SECTION (16) CORE MTD.
10. @ 1/2" THRD. BRONZE INSERT BRAZED TO STRUCTURAL STEEL. "GRD" SHALL BE STENCILED IN RED LETTERS ON THE CONCRETE ABOVE INSERT. BOTTOM SECTION (8) CORE MTD.
11. @ 1/4" THRD. BRONZE INSERT W/TAI. BRAZED TO STRUCTURAL STEEL. "GRD" SHALL BE STENCILED IN RED LETTER ON THE CONCRETE ABOVE EACH INSERT. BOTTOM SECTION (4) CORE MTD.; TOP SECTION (4) CORE MTD.
12. @ 1/4" P-15-1 INSERT. BOTTOM SECTION (4) CORE MTD.; TOP SECTION (4) CORE MTD.

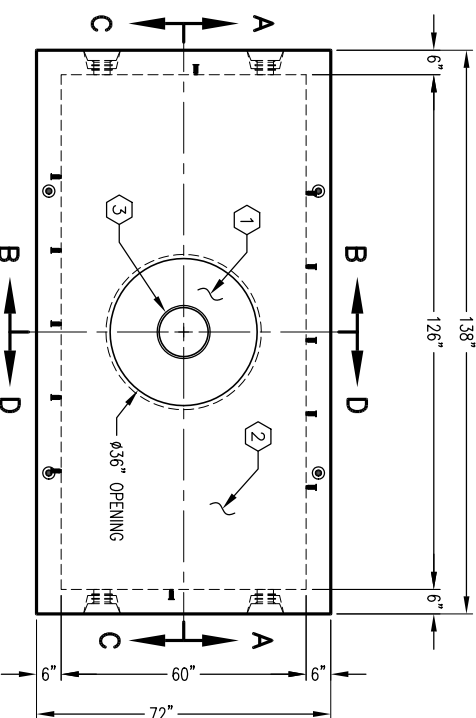
- GENERAL NOTES:**
1. Minimum soil bearing capacity is hereby assumed to be 2000 PSF unless otherwise documented by a geotechnical report that shall be provided to the end user. Jensen Precast shall not be held responsible for the soil bearing capacity.
  2. Installation of Manholes, Vaults, Handholes, Meter Boxes etc. will be as per Jensen Installation procedures.
  3. Structural modification to the Jensen line of products is not permitted without prior written approval of Jensen Engineering Dept.
  4. Do not scale the drawings, verify all dimensions including rough openings, if any discrepancies are found, notify the Jensen Engineer immediately.
  5. The Jensen Engineer will interpret the intent of the drawings in case of possible conflict or discrepancy.
  6. **Permissible Variations:**  
 The dimensions of the length, width, height, or dia. measurements of the structure when measured on the inside surfaces shall not deviate from design dimensions by more than the following:  
 Dimensions: Tolerance:  
 0 to 5 Feet 1/4"  
 5 to 10 Feet 3/8"  
 10 to 20 Feet as agreed upon  
 Squaresness Tolerance:  
 The inside of the precast concrete component shall be square as measured on the inside surfaces. The difference between such measurements shall not exceed the following:  
 Measured Length: Allowable Difference  
 0 to 10 Feet 3/4"  
 10 to 20 Feet 1 1/2"  
 20 Feet and over as agreed upon between the supplier and purchaser.
  - 7.



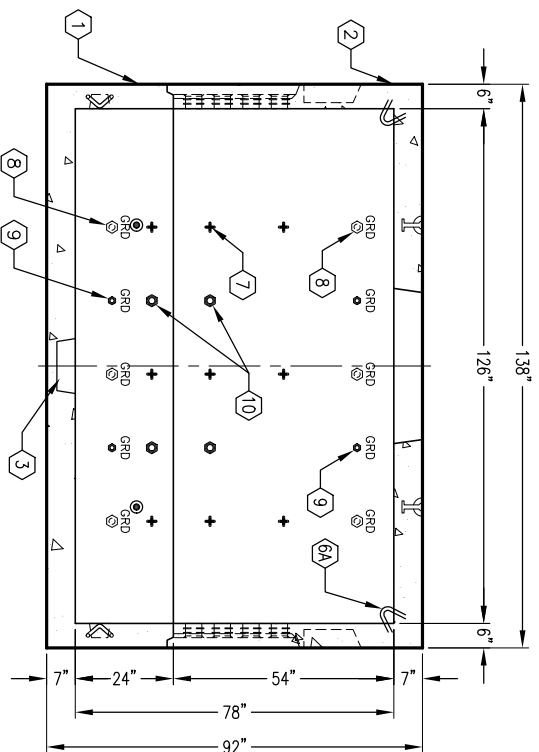
**SECTION A-A**



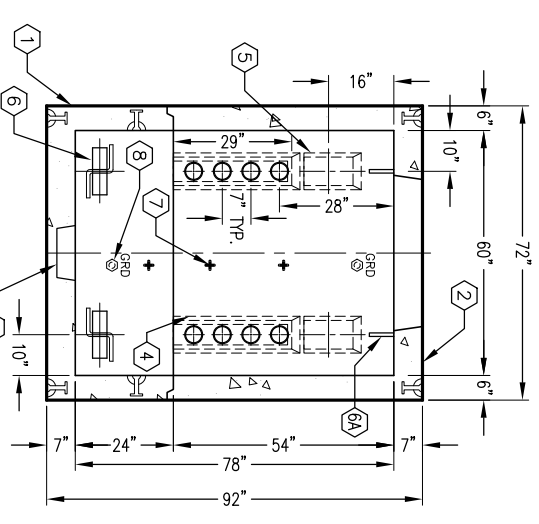
**SECTION B-B**



**PLAN VIEW**



**SECTION C-C**



**SECTION D-D**

MINIMUM EXCAVATION SIZE:  
 7'-0" x 12'-6" x DEPTH REQ'D.

## K5106-FM78-131

PER VERIZON SPEC. GTS-8395

03-01-02



#	DATE	DESCRIPTION	BY

## K5106-FM78-131

PER VERIZON SPEC. GTS-8395

03-01-02



AUTOCAD REL. 14