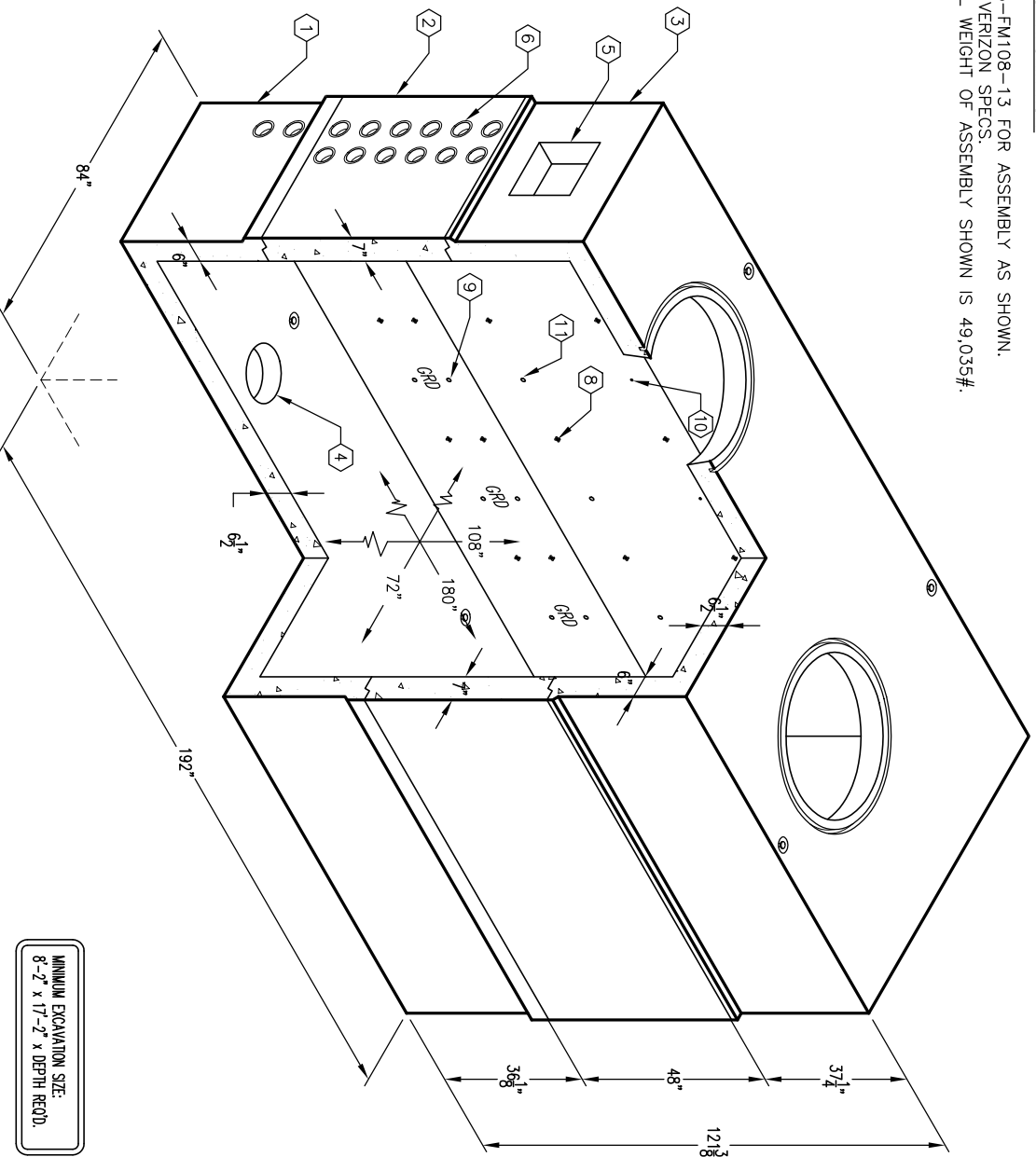


6'-0" x 15'-0" VERIZON MANHOLE X 108" DEEP

NOTES:

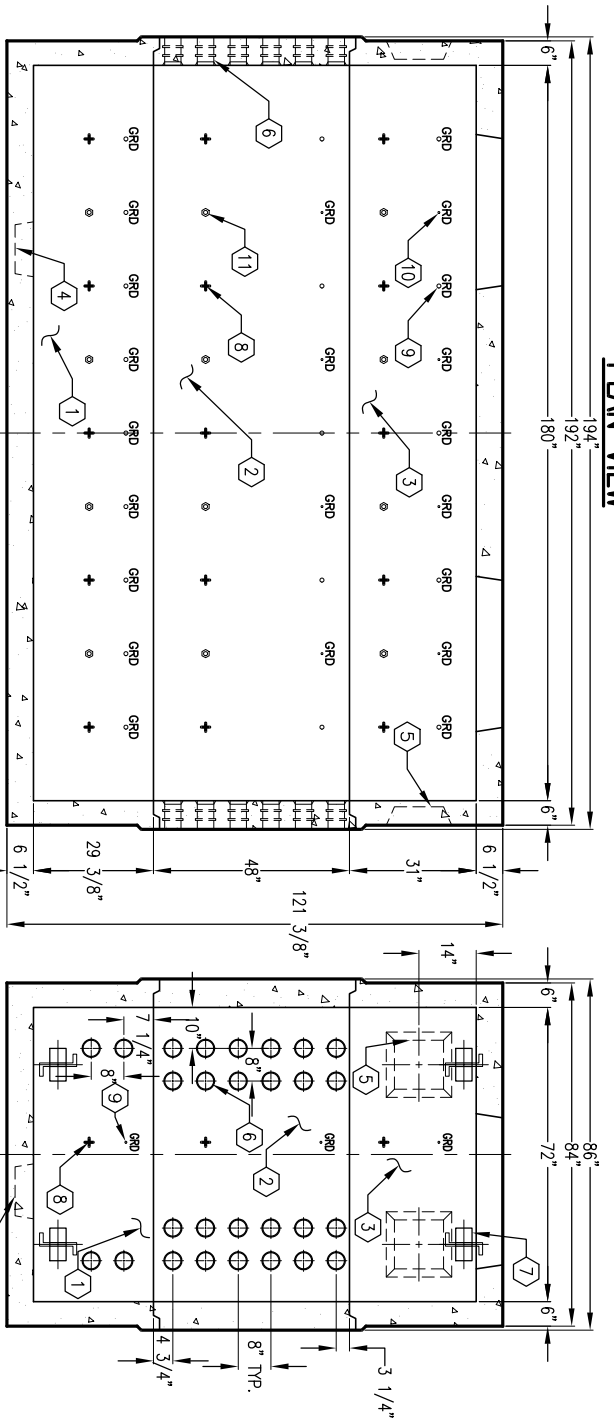
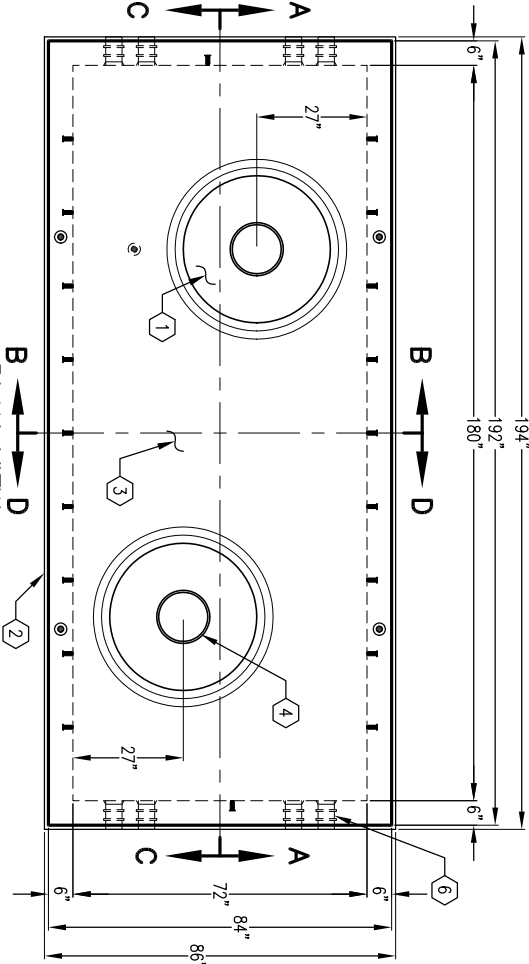
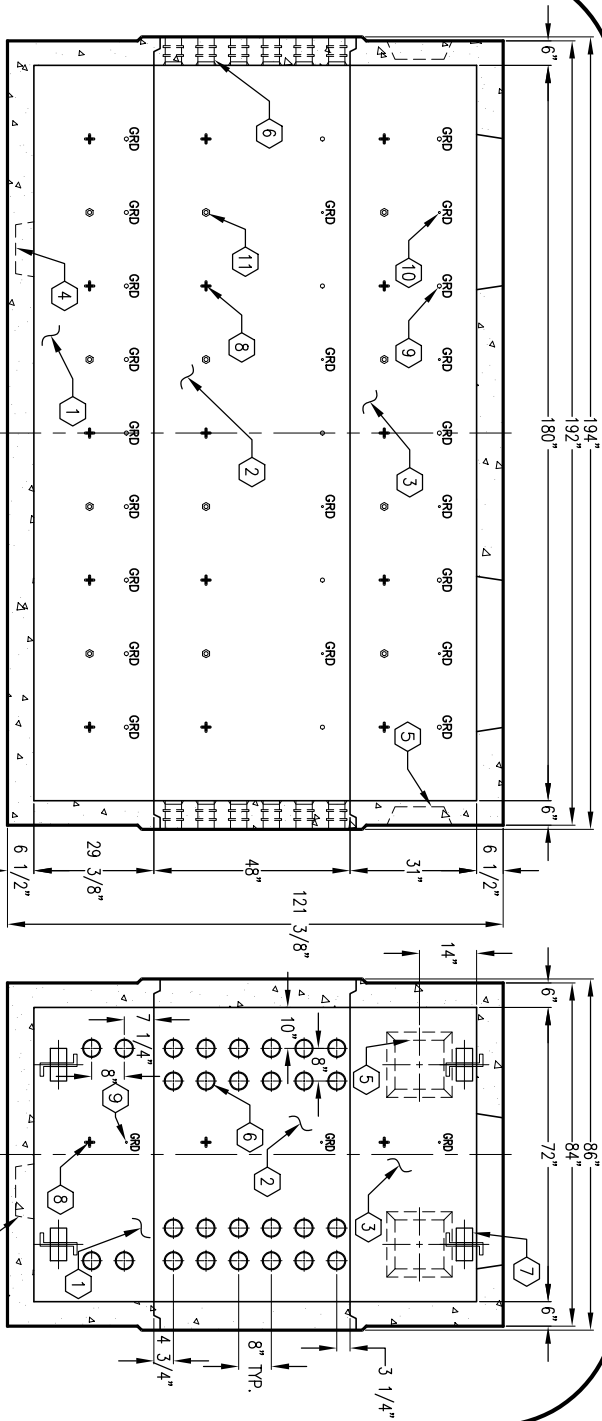
- 1. MANHOLE DESIGNED IN ACCORDANCE WITH AASHTO H-20-44 TRAFFIC BRIDGE LOADING USING 6,000 PSI COMPRESSIVE STRENGTH CONCRETE AND 60,000 PSI YIELD STRENGTH ASTM A-706 STEEL REINFORCEMENT PER CALCS. #30640.
- 2. MANHOLE TO BE PLACED ON A MIN. 6" BASE OF CRUSHER RUN FOR EAST OF INSTALLATION AND EVEN LOAD DISTRIBUTION.
- 3. LIMITS OF COVER OVER ROOF SECTION IS 1'-0" TO 5'-0"
- 4. ALL WALLS AND CEILING SHALL BE PAINTED WHITE THE FOLLOWING MATERIALS ARE TO BE SHIPPED WITH THE MANHOLE
- 5. 7/8" x 1 3/4" GASKET (90 FT. REQ'D).
- 6. 1/2" x 2" HEX HEAD PLATED BOLTS (72 REQ'D).
- 7. 1/2" x 1 1/4" HEX HEAD PLATED BOLTS (60 REQ'D).
- 8. 1/2" HEAVY HEX HEAD GALV. NUT (60 REQ'D).
- 9. 1/4" x 3/4" HEX HEAD PLATED BOLTS (48 REQ'D).
- 10. 1/4" FENDER WASHERS PLATED (96 REQ'D).
- 11. BONDING RIBBON (8 @ 8'-0")
- 12. 16 HOLE CABLE RACKS (12 REQ'D).
- 13. 18 HOLE CABLE RACKS (12 REQ'D).
- 14. 32 HOLE CABLE RACKS (12 REQ'D).
- 15. 5 SUPPORTS (60 REQ'D).
- 16. A-3383 LADDER STEPS (4 REQ'D).
- 17. A-3600 LADDER 10' (2 REQ'D).

ORDERING INFORMATION:
 K615-FM108-13 FOR ASSEMBLY AS SHOWN.
 PER VERIZON SPECS.
 TOTAL WEIGHT OF ASSEMBLY SHOWN IS 49,035#.



MINIMUM EXCAVATION SIZE:
 8'-2" x 17'-2" x DEPTH REQ'D.

JENSON PRECAST
 K615-FM108-13
 AUTOCAD REL. 14
 PER VERIZON SPECS.
 03-01-02



#	DATE	DESCRIPTION	BY

JENSON PRECAST
 K615-FM108-13
 PER VERIZON SPECS.
 03-01-02