

5'-0" X 10'-6" VERIZON MANHOLE X 6'-6" DEEP

NOTES:

- 1. MANHOLE DESIGNED IN ACCORDANCE WITH AASHTO H-20-44 TRAFFIC BRIDGE LOADING USING 5,500 PSI [37.92MPa] COMPRESSIVE STRENGTH CONCRETE AND 60,000 PSI [413.2MPa] YIELD STRENGTH ASTM A-706 STEEL REINFORCEMENT PER CALCS. #31148.
 - 2. MANHOLE TO BE PLACED ON A MIN. 6" BASE OF CRUSHER RUN FOR EASE OF INSTALLATION AND EVEN LOAD DISTRIBUTION.
 - 3. LIMIT OF COVER OVER ROOF SECTION IS 1'-6" TO 5'-0".
 - 4. ALL WALLS AND CEILINGS SHALL BE PAINTED WHITE.
- THE FOLLOWING MATERIAL TO BE SHIPPED WITH THE MANHOLE
- a) 7/8" x 1 3/4" GASKET (45 FT. REQ'D.).
 - b) 1/2" x 2" HEX HEAD PLATED BOLTS (32 REQ'D.).
 - c) 1/2" x 1 1/4" HEX HEAD PLATED BOLTS (24 REQ'D.).
 - d) 1/2" HEAVY HEX HEAD GALV. NUT (24 REQ'D.).
 - e) 1/4" x 3/4" HEX HEAD PLATED BOLTS (16 REQ'D.).
 - f) 1/4" FENDER WASHER PLATED (32 REQ'D.).
 - g) BONDING RIBBON (28 FT.).
 - h) 14 HOLE CABLE RACKS (8 REQ'D.).
 - i) 32 HOLE CABLE RACKS (8 REQ'D.).
 - j) S SUPPORTS (30 REQ'D.).
 - k) A-3383 LADDER STEPS (2 REQ'D.).
 - l) A-3600 LADDER 8' (1 REQ'D.).

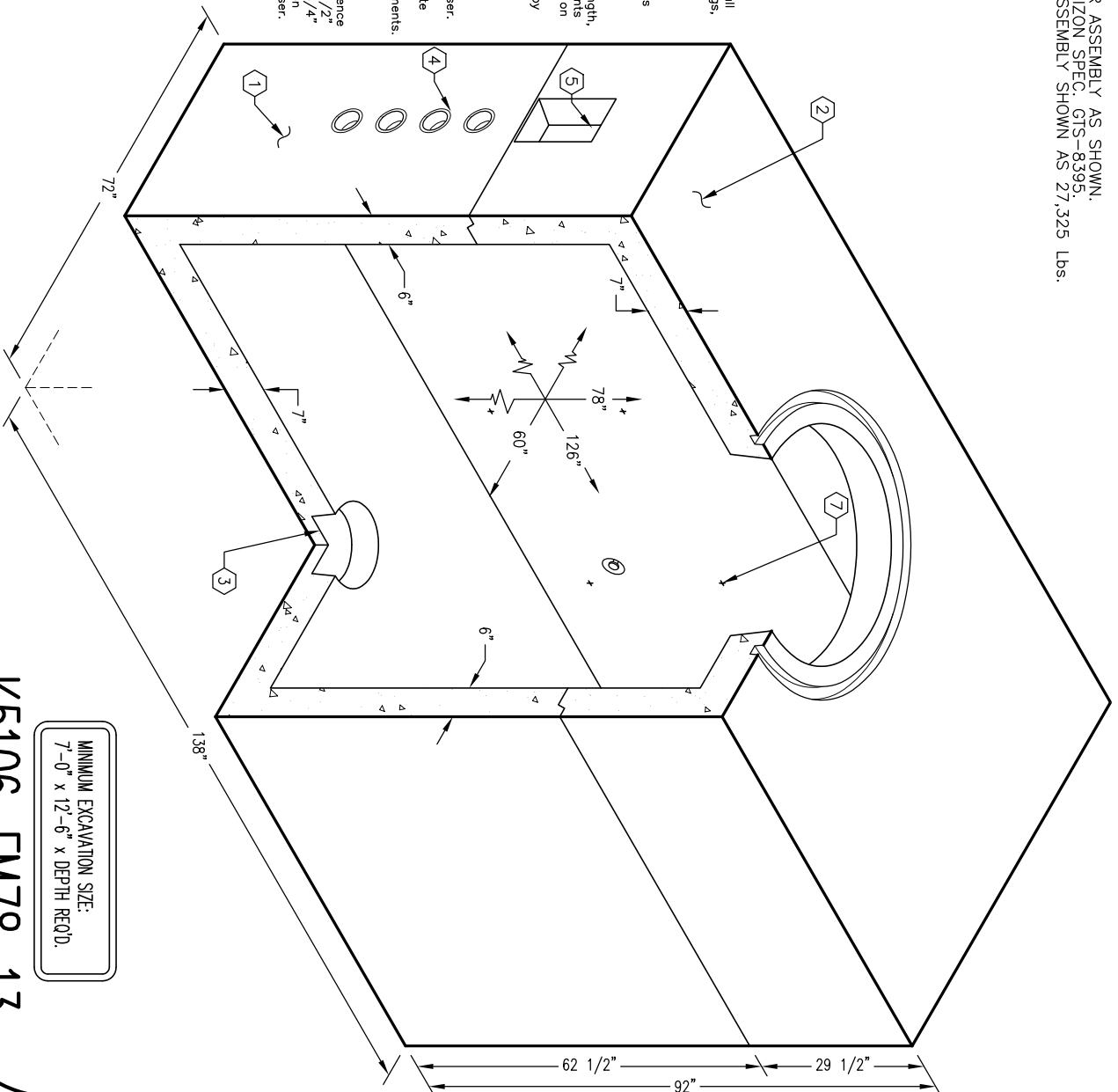
ORDERING INFORMATION:

K5106FM78-13 FOR ASSEMBLY AS SHOWN.
 APPROVED FOR VERIZON SPEC. GTS-8395.
 TOTAL WEIGHT OF ASSEMBLY SHOWN AS 27,325 Lbs.

GENERAL NOTES:

1. Minimum soil bearing capacity is hereby assumed to be 2000 PSF unless otherwise documented by a geotechnical report that shall be provided to Jensen Precast by the end user. Jensen Precast shall not be held responsible for the soil bearing capacity. Installation of Manholes, Vaults, Handholes, Meter Boxes etc. will be as per Jensen Installation Manual.
2. All structural modifications to the Jensen line of products is not permitted without prior written approval from Jensen Engineering Department.
3. Do not scale the drawings, verify all dimensions including rough openings, if any discrepancies are found, notify the Jensen Engineer immediately.
4. The Jensen Engineer will interpret the intent of the drawings in case of possible conflict or discrepancy.
5. Dimensional Tolerances - The length, width, height, or dia. measurements of the inside surfaces shall not deviate from design dimensions by more than the following:
 - Dimensions: 0 to 5 Feet 1/4"
 - 5 to 10 Feet 3/8"
 - 10 to 20 Feet 1/2"
6. Squaresness Tolerance: The inside of the precast concrete component shall be square as determined by diagonal measurements. The difference between such measurements shall not exceed the following:
 - Measure 10 Feet 1/2"
 - 10 to 20 Feet 3/4"
 - 20 Feet and over as agreed upon between the supplier and purchaser.

1. UV5106-B54-13, 54" BOTTOM SECTION, WT. 17,122 lbs.
2. UV5106-T24-13, 24" TOP SECTION, WT. 10,203 lbs.
3. 12" x 13" DIA. SUMP x 5" DEEP, BOTTOM SECTION (1) CORE MTD.
4. DIA. GRAY TERMS, LOCATE AS FOLLOWS: BOTTOM SECTION (16) SHELL MTD.
5. 7" x 12" K.O. x 4 1/2" DEEP, DRAFT T=2", S1-S2=1", B=0". TOP SECTION (4) SHELL MTD.
6. 7/8" DIA. x 3 3/8" GALV. PULL IRON. TOP SECTION (4) CORE MTD.
7. 7/8" DIA. x 9" GALV. PULL IRON. BOTTOM SECTION (16) CORE MTD.
8. 1/2" PLASTIC RACKING INSERT. BOTTOM SECTION (16) CORE MTD.
9. TOP SECTION (8) CORE MTD.
10. 1/2" THRD. BRONZE INSERT BRAZED TO STRUCTURAL STEEL. "GRD" SHALL BE STENCILED IN RED LETTERS ABOVE INSERT. BOTTOM SECTION (8) CORE MTD.
11. 1/4" THRD. BRONZE INSERT W/TAIL BRAZED TO STRUCTURAL STEEL. "GRD" SHALL BE STENCILED IN RED LETTER ON THE CONCRETE ABOVE EACH INSERT. BOTTOM SECTION (4) CORE MTD.
12. 1/4" P-15-T INSERT. TOP SECTION (4) CORE MTD.
13. TOP SECTION (4) CORE MTD.

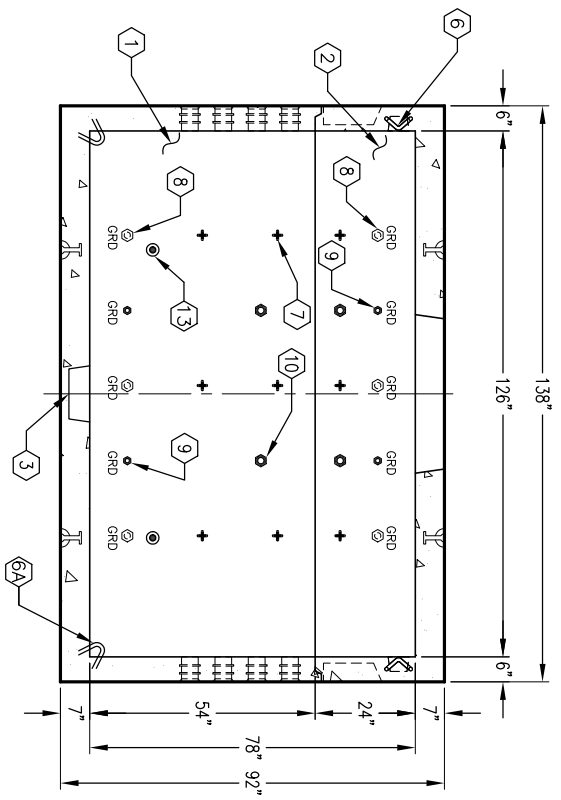


MINIMUM EXCAVATION SIZE:
 7'-0" x 12'-6" x DEPTH REQ'D.

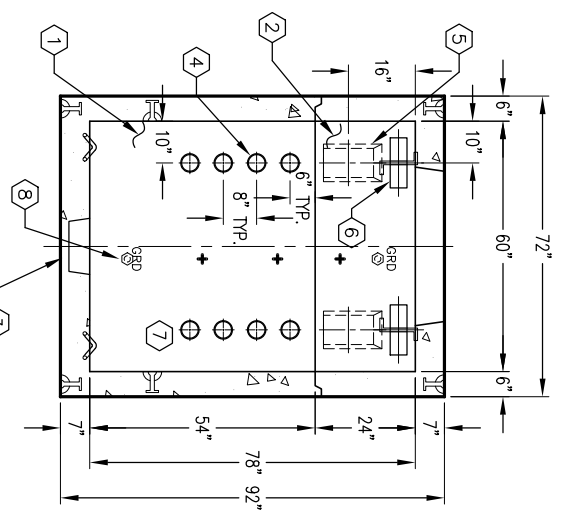
K5106-FM78-13

PER VERIZON SPECS. GTS-8395

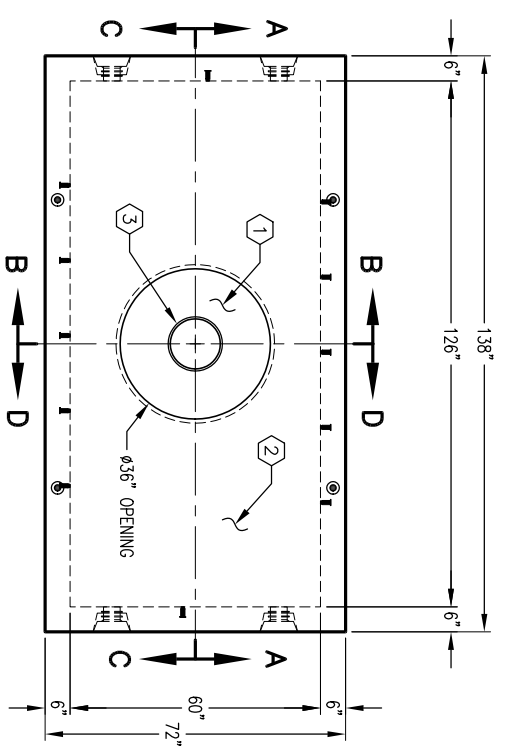
03-01-02



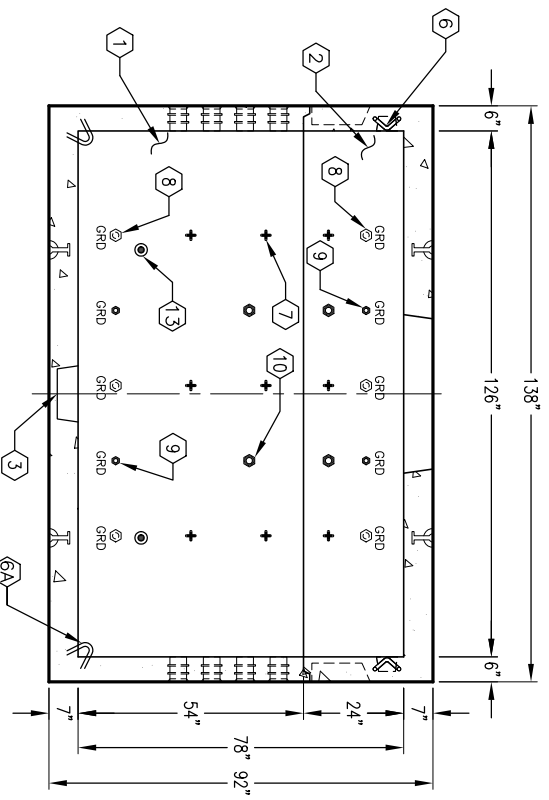
SECTION A-A



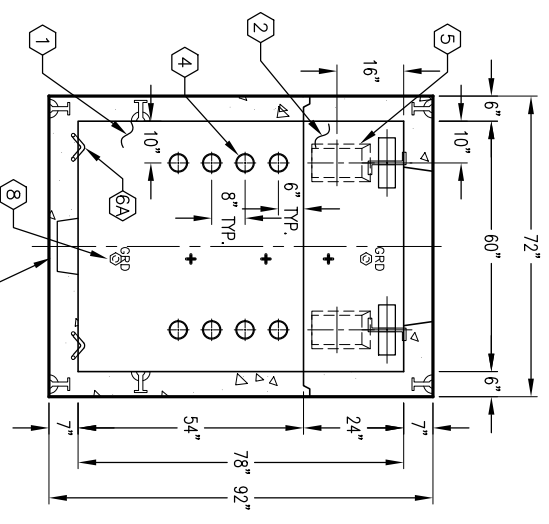
SECTION B-B



PLAN VIEW



SECTION C-C



SECTION D-D

#	DATE	DESCRIPTION	BY

K5106-FM78-13

PER VERIZON SPECS. GTS-8395