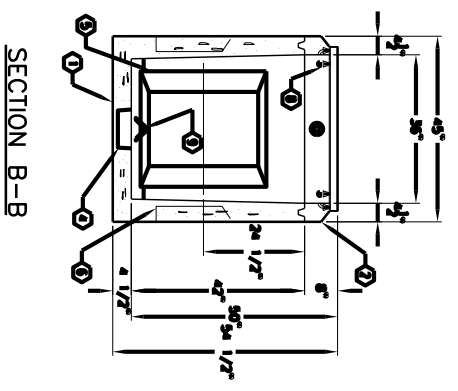
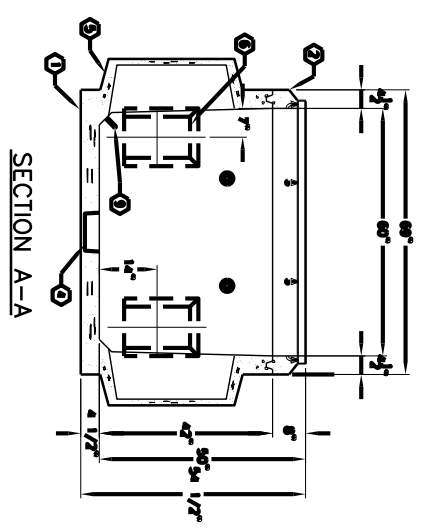
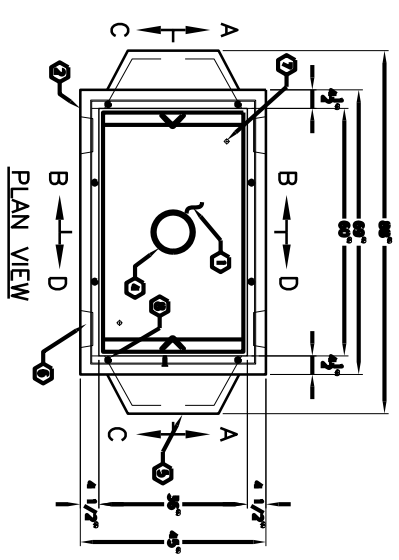
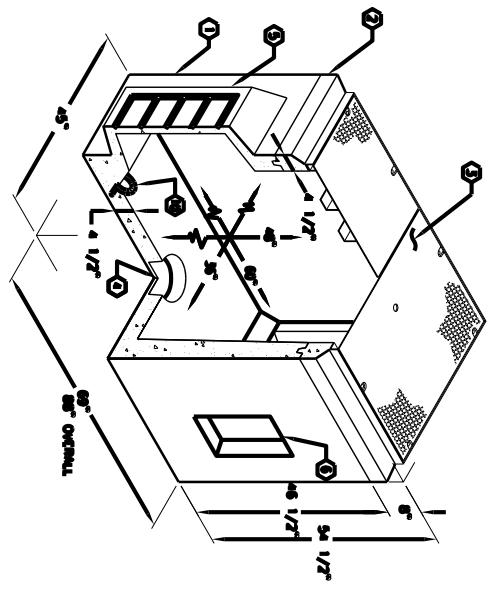


3'-0" x 5'-0" EDISON DUCTED PULL BOX x 50" DEEP

NOTES:

- 1. PULL BOX DESIGNED TO ACCOMMODATE WITH APPROXIMATELY 20-24 BAYONET BRACKET LAMPED LIGHTS AS SHOWN PER CONVENTIONAL SIMPSON CONCRETE AND 60,000 PSI WILD SIMPSON ASH 1-TON STILL REINFORCEMENT.
- 2. PULL BOX TO BE PLACED ON A MIN. 6" BAY OF CONCRETE WITH TOP EDGE OF INSULATOR AND EARTH LAMP DISTRIBUTION.
- 3. APPROVED PER JENSEN SPEC. US-2251 PB-6 FOR A WIDTH OF ASSEMBLY SHOWN IS 54.45 IN.
- 1. FINISHED 84" DIA. 4" BOTTOM SECTION, WT. 4.48 LB.
- 2. FINISHED 84" DIA. 8" TOP SECTION, W/OVAL, W/ODLV, W/ODLV FRAMES CASH-14.
- 3A. SECTION-TOP, 11" THK REINFC. BAYONET COVER, GALVANIZED FRAM, W/ASPHD TOPSOIL.
- 3B. 8" ROUNDOVAL BAYONET, WT. 4.25 LB. (AS SHOWN)
- 4. 12"-20-42, 2 BAYONET BRACKET COVER, W/ASPHD TOPSOIL, (NOT SHOWN)
- 5. 6" x 3" DIA. GALV. x 7" DEPT. BAYONET SECTION.
- 6. 6" x 28 1/2" DUCTED ROD x 17" DEPT. BAYONET SECTION.
- 7. 10" x 18" K.O. x 3" DEPT. BAYONET SECTION.
- 8. 1" DIA. BAYONET ROD MOD. BAYONET SECTION.
- 9. 1/2" P-25-1 REINFC. BAYONET SECTION.
- 10. 1/2" DIA. x 3" GALV. W/ODLV, PULL ROD, BAYONET SECTION.

LIGHT TRAFFIC ASSEMBLY WITH STEEL COVER K3660-DP50-11P.  
 PARKWAY ASSEMBLY WITH RPM COVER K3660-DP50-11P.



MINIMUM EXPOSURE SPEC.  
 4'-1" x 7'-5" x 18" DIA. ROD.

K3660-DP50-11  
 PER DESIGN SPEC. US-2251 PB-6  
 03-01-02



PLAN VIEW

SECTION A-A

SECTION B-B

K3660-DP50-11  
 PER DESIGN SPEC. US-2251 PB-6  
 03-01-02

