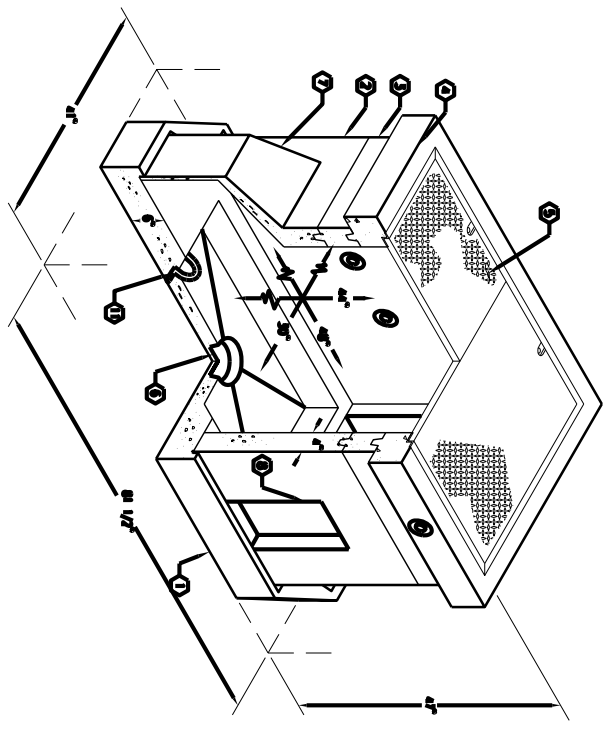


2'-6" x 4'-0" HEAVY TRAFFIC EDISON INTERCEPT DUCTED BOX x 42" DEEP

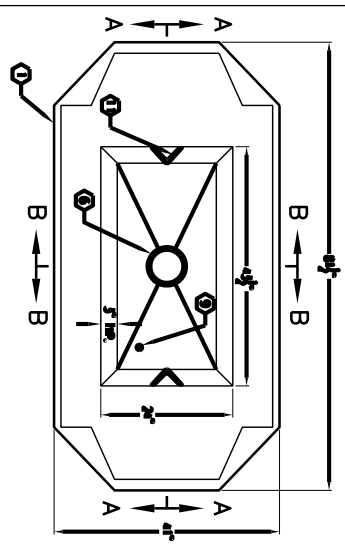
NOTE:

1. P83048-B-03, BASE SLAB, WT. 1,700 BS.
2. P83048-D-27-03, 27" INTERMEDIATE SECTION, WT. 1,170 BS.
3. P83048-R6, 6" RESEF SECTION, WT. 210 BS.
4. P83048-T8-11, 8" TOP SLAB, WT. 1180 BS. W/CAST IRON FRAME CAST IN PLACE.
5. ALWAYSRA FOUNDRY A-1473 TRAFFIC CAST IRON FRAME CAST IN TOP SECTION W/ TWO PCECE C.I. COVER EDISON, WT. 740 Lbs.
6. 6" x 7" DA. SUPP. x 4" DEEP, BOTTOM SECTION.
7. 23" x 26" DUCTED K.O. x 12" DEEP, BOTTOM SECTION.
8. 8" x 16" K.O. x 5" DEEP, BOTTOM SECTION.
9. 1" DA. BLIND GROUND ROD HOLE, BOTTOM SECTION.
11. 7/8" DA. x 9" GALV. VERTICAL PULL ROD, BOTTOM SECTION.

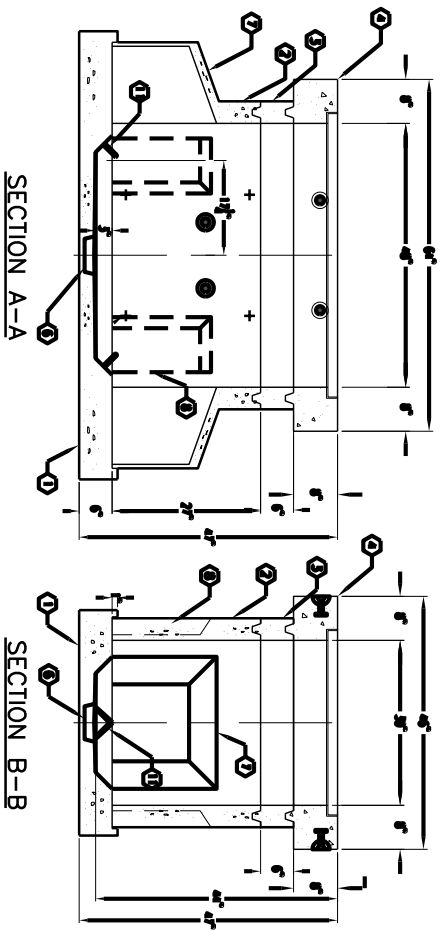
CONCRETE REQUIREMENTS:
 APPROVED FOR EDISON SPEC. USE 2201 R8-4
 TOTAL WEIGHT OF ASSEMBLY APPROX 5,187 BS.



MINIMUM EXAMINATION SIZE
 4'-3" x 7'-10" x 18" MIN. HEIGHT



PLAN VIEW OF BOTTOM SLAB



SECTION A-A

SECTION B-B