

6'-1" x 6'-4" SDG&E TRANSFORMER PAD W/3'-0" x 6'-0" ENCLOSURE x 36" DEEP-3426

NOTES:

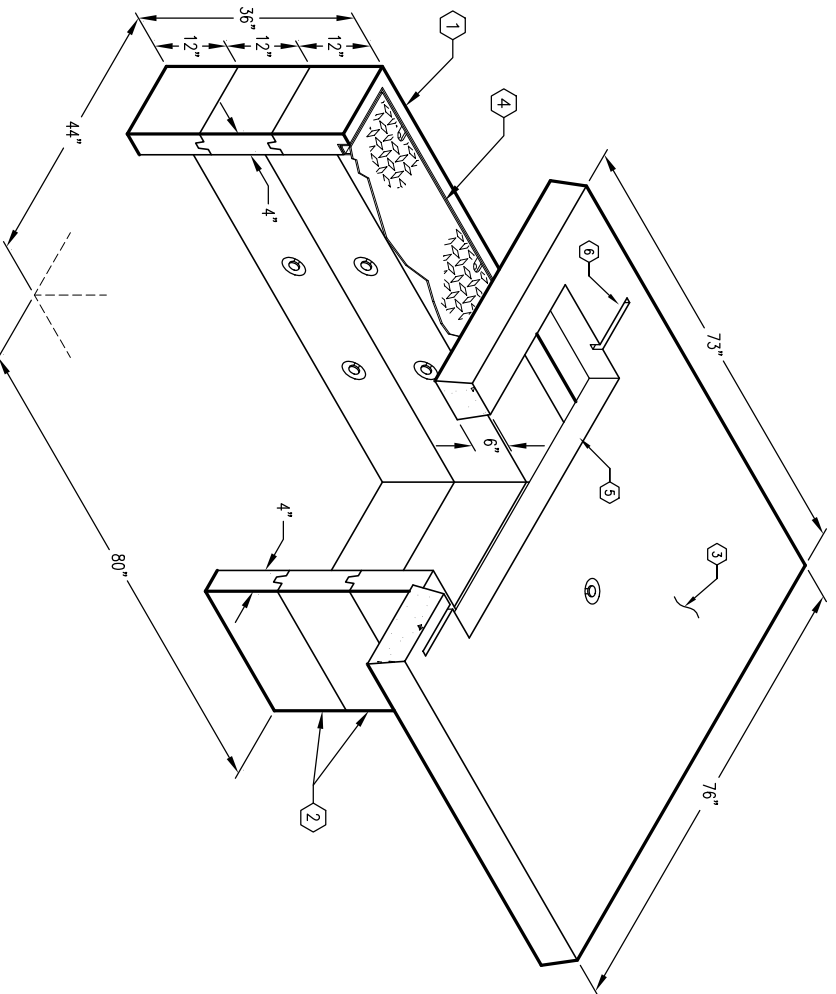
- TRANSFORMER PAD DESIGNED FOR 300 PSF PARKWAY LOADING. ENCLOSURE DESIGNED IN ACCORDANCE WITH AASHTO H20-44 TRAFFIC BRIDGE LOADING USING 5,500 psi [37.92 MPa] COMPRESSIVE STRENGTH CONCRETE AND 60,000 psi [413.2 MPa] YIELD STRENGTH ASTM A-706 STEEL REINFORCEMENT PER CALCS. #31721.
- COVER DESIGN FOR PARKWAY LOADING PER CALCS. #31428.
- STRUCTURE TO BE STENCILED, "JENSEN PRECAST", WITH "TIME" AND "DATE OF POUR"; AND WITH S.D.G. & E. STOCK NUMBER ON THE INTERIOR AND EXTERIOR WALLS.
- TRANSFORMER PAD TO BE PLACED ON A MIN. 6" BASE OF CRUSHER RUN FOR EASE OF INSTALLATION AND EVEN LOAD DISTRIBUTION.
- 7/8" X 1 3/4" CONSEAL GASKET (45 FT. REQ'D.) WILL BE SHIPPED WITH EACH STRUCTURE.

ORDERING INFORMATION:

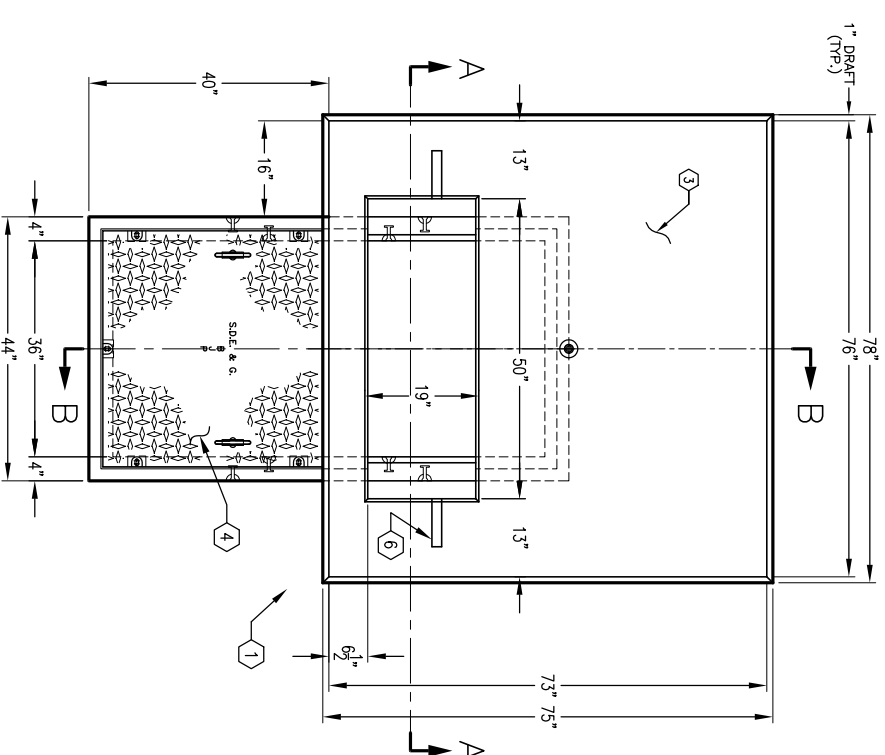
K3672-SB36-10 FOR ASSEMBLY AS SHOWN.
 PER S.D.G. & E. SPEC. 3426
 TOTAL WEIGHT OF ASSEMBLY AS SHOWN IS 5,960 lbs.

JENSEN PART NO.	S.D.G. & E. STOCK NO.
1. PD7376-16-10	514005
2. PB3672-112-10	336210
3. PB3672-R12	336212
4. SC3672-PGV-1010	286843

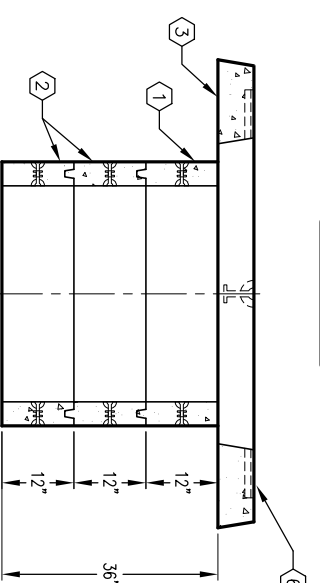
- GENERAL NOTES:**
- Minimum soil bearing capacity is hereby assumed to be 2000 PSF unless otherwise documented by a geotechnical report that shall be provided to Jensen Precast by the end user. Jensen Precast shall not be held responsible for the soil bearing capacity. Installation of Manholes, Vaults, Handholes, Meter Boxes etc. will be as per Jensen installation procedures.
 - Structural modification to the Jensen line of products is not permitted without prior written approval from Jensen Engineering Department. Do not scale the drawings, verify all dimensions including rough openings, if any discrepancies are found, notify the Jensen Engineer immediately.
 - The Jensen Engineer will interpret the intent of the drawings in case of possible conflict or discrepancy.
 - Permissible Variations:**
 Dimensional Tolerances – The length, width, height, or dia. measurements of the structure when measured on the inside surfaces shall not deviate from design dimensions by more than the following:
 Dimensions: Tolerance:
 0 to 5 Feet 1/4"
 5 to 10 Feet 3/8"
 10 to 20 Feet 1 1/4"
 between the supplier and purchaser.
 Squariness Tolerance:
 The inside of the precast concrete component shall be square as determined by diagonal measurements. The difference between such measurements shall not exceed the following:
 Measured Length: Allowable Difference
 0 to 10 Feet 1/2"
 10 to 20 Feet 3/4"
 20 Feet and over as agreed upon between the supplier and purchaser.



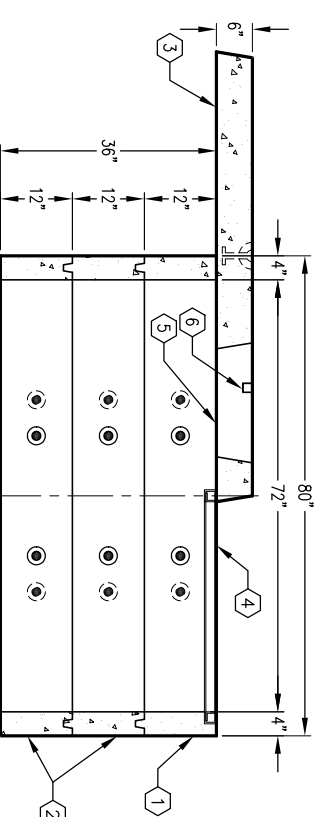
K3672-SB36-10
 PER S.D.G. & E. SPEC. 3426
 03-01-02



PLAN VIEW



SECTION A-A



SECTION B-B



K3672-SB36-10
 PER S.D.G. & E. SPEC. 3426
 03-01-02

#	DATE	DESCRIPTION	BY