

5'-0" x 5'-4" SDG&E CAPACITOR PAD x 6" THICK-3414

NOTES:

1. PD6064-T6-10, 6" TRANSFORMER PAD, WT. 1,951 lbs.
 2. 10" x 30" CABLE OPENING (1528-102).
 3. 1 5/8" x 1 5/8" GALV. UNISTRUT x 12" LONG, (2) PAN MTD.

2. 10" x 30" CABLE OPENING (1528-102).
 3. 1 5/8" x 1 5/8" GALV. UNISTRUT x 12" LONG, (2) PAN MTD.

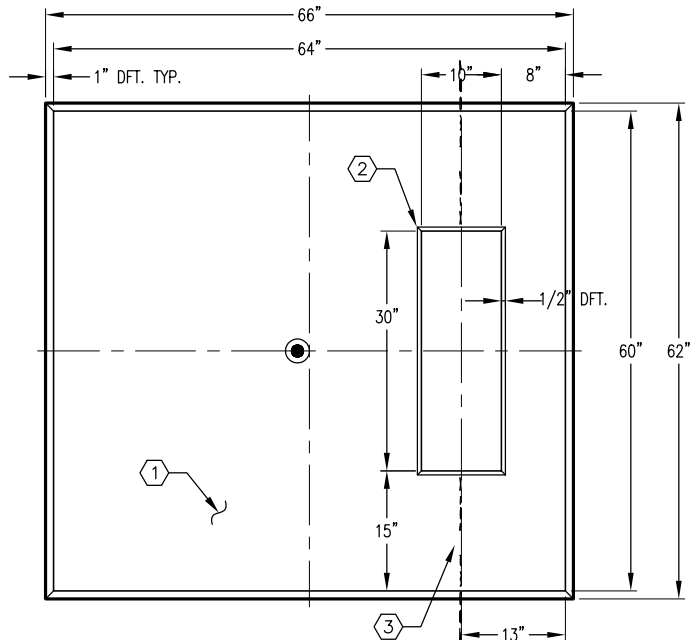
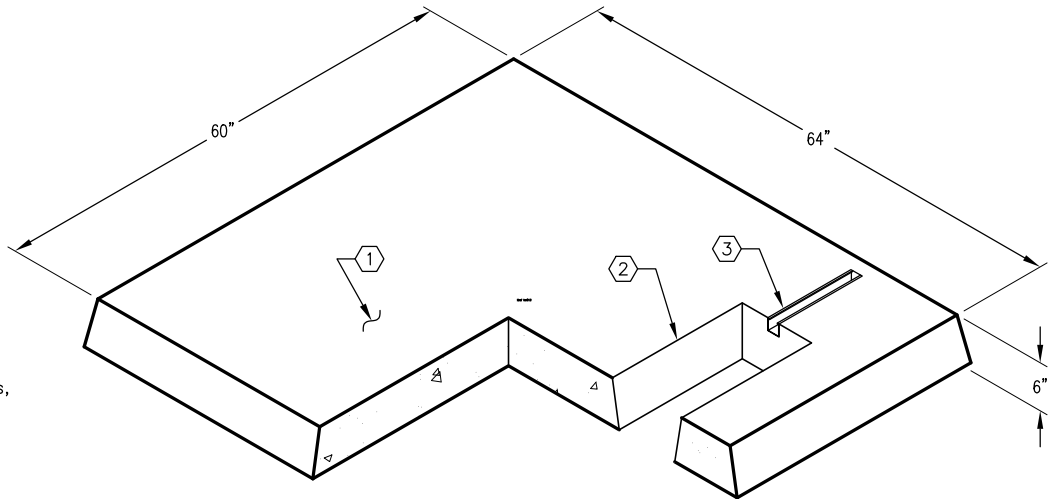
JENSEN STOCK # PD6064-T6-10 S.D.G. & E. STOCK #: 514280

ORDERING INFORMATION:

PD6064-T6-10 FOR TRANSFORMER PAD AS SHOWN.
 APPROVED FOR S.D.G. & E. SPEC. 3414.
 TOTAL WEIGHT OF PAD IS 1,951 lbs.

GENERAL NOTES:

- Minimum soil bearing capacity is hereby assumed to be 2000 PSF unless otherwise documented by a geotechnical report that shall be provided to Jensen Precast by the end user. Jensen Precast shall not be held responsible for the soil bearing capacity.
- Installation of Manholes, Vaults, Handholes, Meter Boxes etc. will be as per Jensen installation procedures.
- Structural modification to the Jensen line of products is not permitted without prior written approval from Jensen Engineering Department.
- Do not scale the drawings, verify all dimensions including rough openings, if any discrepancies are found, notify the Jensen Engineer immediately.
- The Jensen Engineer will interpret the intent of the drawings in case of possible conflict or discrepancy.
- Permissible Variations:
 Dimensional Tolerances - The length, width, height, or dia. measurements of the structure when measured on the inside surfaces shall not deviate from design dimensions by more than the following:
 Dimensions: Tolerance:
 0 to 5 Feet 1/4"
 5 to 10 Feet 3/8"
 10 to 20 Feet as agreed upon between the supplier and purchaser.
- Squareness Tolerance:
 The inside of the precast concrete component shall be square as determined by diagonal measurements. The difference between such measurements shall not exceed the following:
 Measured Length: Allowable Difference
 0 to 10 Feet 1/2"
 10 to 20 Feet 3/4"
 20 Feet and over as agreed upon between the supplier and purchaser.



#	DATE	DESCRIPTION	BY