

# 5'-0" x 8'-6" SDG&E TRAFFIC SWITCH ENCLOSURE x 70" DEEP-3316

## NOTES:

- DESIGNED FOR H-20-44 TRAFFIC LOADING USING 5,500 P.S.I. CONCRETE AND 60,000 P.S.I. (GRADE 60) REINFORCING STEEL PER CALCS. # 30381 & # 30427.
- ALL INTERIOR SURFACES SHALL BE PAINTED WITH ONE COAT OF FLAT LATEX WHITE PAINT.
- SWITCH ENCLOSURE TO BE PLACED IN A 6" BASE CRUSHER RUN FOR EASE IN INSTALLATION AND EVEN LOAD DISTRIBUTION.
- EXTERIOR SURFACES OF STRUCTURE(S) SHALL BE COATED WITH AN APPROVED, TRANSPARENT, WATER-PROOFING SEALER.
- STRUCTURES TO BE STENCILED, "JENSEN PRECAST", WITH "TIME" AND "DATE OF POUR", AND WITH S.D.G. & E. STOCK NUMBER (SEE BELOW) ON INTERIOR AND EXTERIOR WALLS.

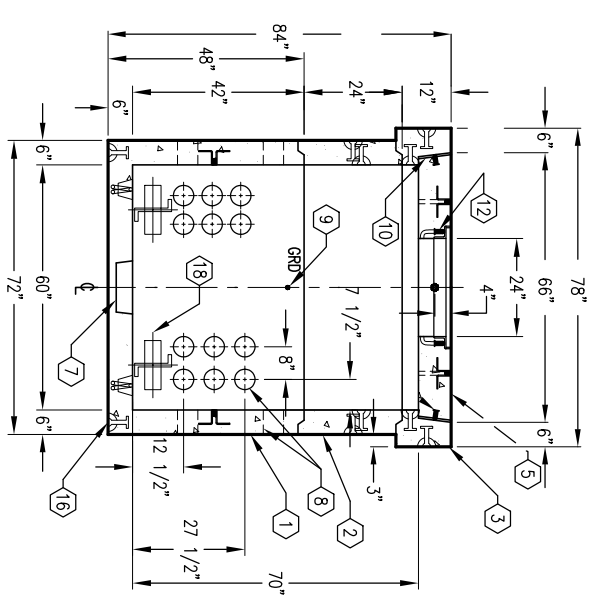
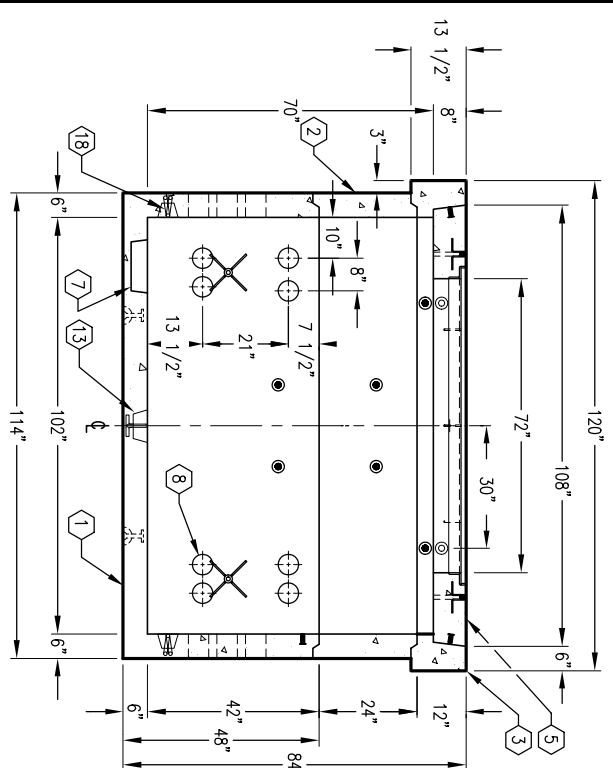
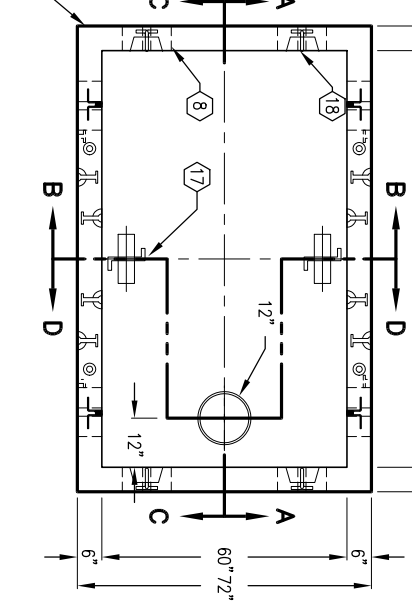
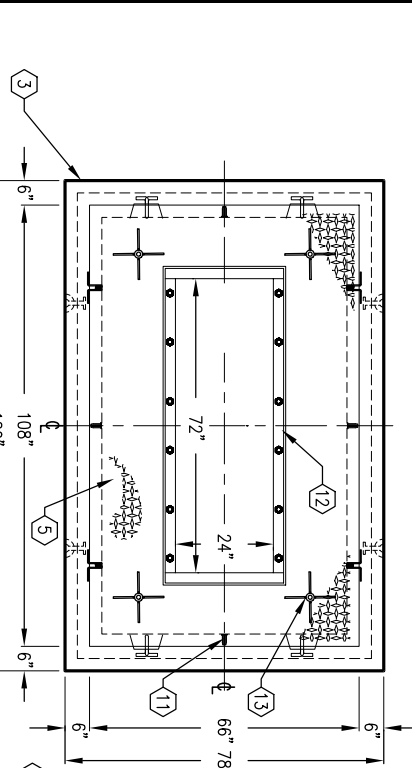
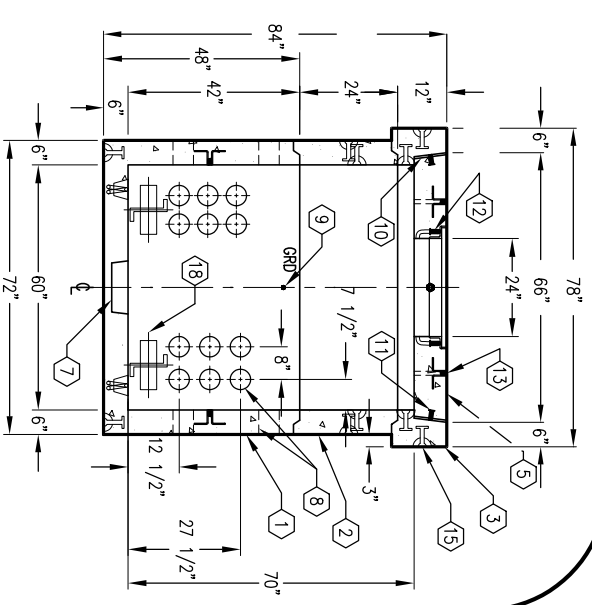
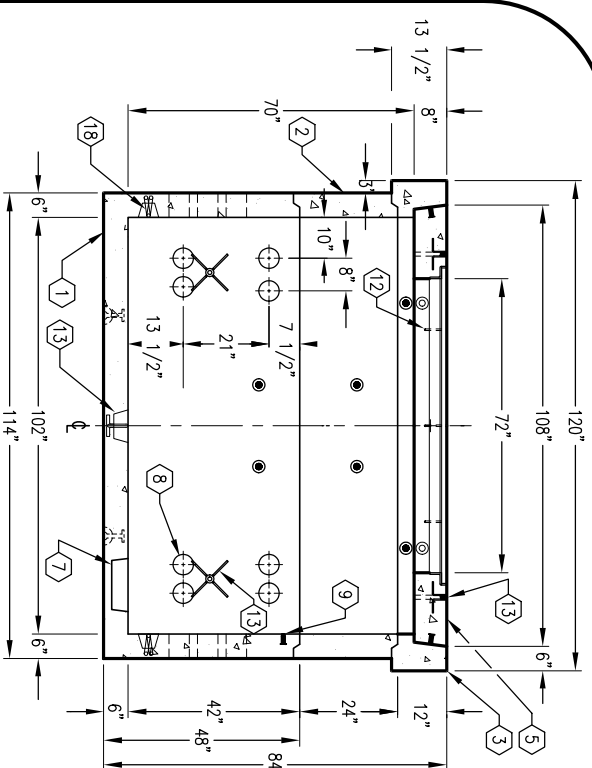
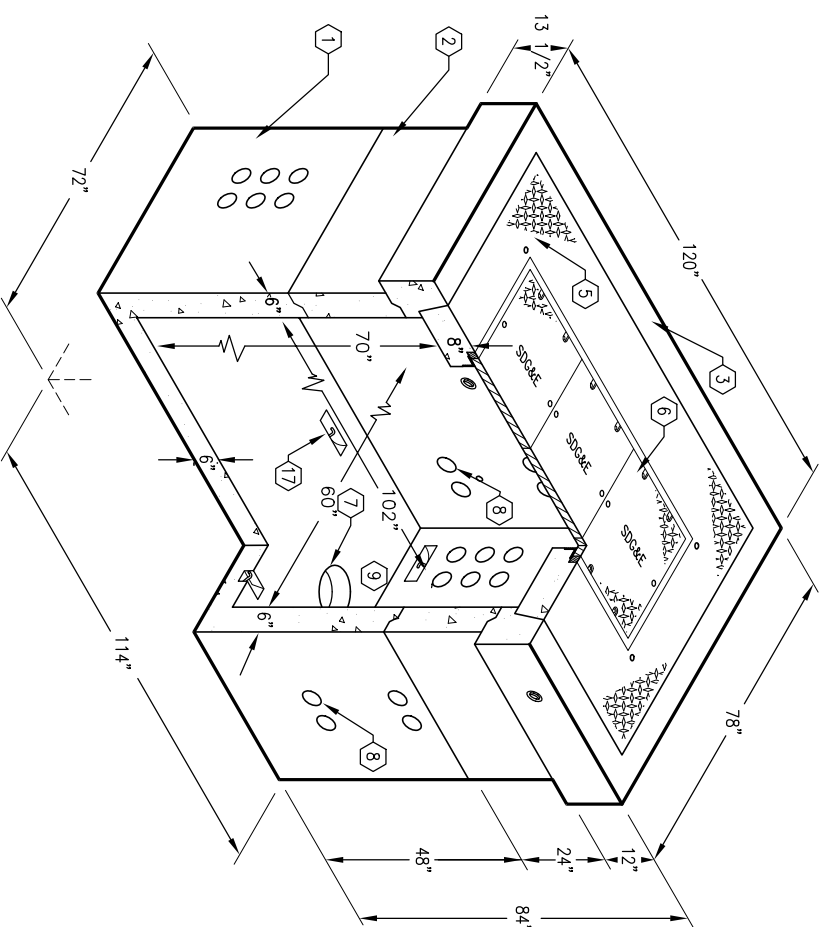
- 1. PB586-B42-10, 42" BOTTOM SECTION, WT. 11,850#
- 2. PB586-R24-10, 24" EXTENSION SECTION, WT. 4,350#
- 3. PB586-R12-10, 12" NECK SECTION, WT. 2,355#
- 4. PB586-R12-10, 12" SPECIAL EXTENSION SECTION, WT. 2,175# (NOT SHOWN - AVAILABLE ON SPECIAL ORDER)
- 5. PB586-T10-10, 8" COVER SECTION WITH GALV. FRAME
- 6. THREE PIECE CAST IRON TRAFFIC COVER WITH (6) 1" PICK HOLES & (12) 1/2"-13NC x 2 1/2" S.S.P.H. BOLTS FOR BOLT DOWNS, WT. 680#.
- 7. 12" x 13" DIA. SUMP x 4" DEEP (5000-328). LOCATE AS FOLLOWS: BOTTOM SECTION (1) CORE MTD.
- 8. 5" DIA. CONTERM. (55633) WITH LOCATOR FOR 6" WALLS. LOCATE AS FOLLOWS: BOTTOM SECTION (40) SHELL MTD.
- 9. 1/2" DIA. BRONZE GROUND INSERT WELDED TO REIN., W/PLASTIC PULG. MARKED "GRD" IN RED. BOTTOM SECTION (2) CORE MTD.
- 10. 3/8" x 8" EXPANDED FELT.
- 11. 1/2" P-36-T INSERT. LOCATE AS FOLLOWS: COVER SECTION (4) SHELL MTD.
- 12. 1/2" P-36-T OB W/CLEAN-OUT HOLE. LOCATE AS FOLLOWS: COVER SECTION (12) FRAME MTD.
- 13. 1" GALVANIZED COIL THRD INSERT. LOCATE AS FOLLOWS: BOTTOM SECTION (4) CORE MTD; COVER SECTION (4) TABLE MTD.
- 17. 7/8" x 4 1/2" PULL IRON W/LEGS. GALV. LOCATE AS FOLLOWS: BOTTOM SECTION (2) CORE MTD.
- 18. 7/8" PULL IRON, GALVANIZED. LOCATE AS FOLLOWS: BOTTOM SECTION (4) CORE MTD.

## ORDERING INFORMATION:

K586-SE69-10T FOR ASSEMBLY AS SHOWN.  
 K586-SE81-10T FOR ASSEMBLY W/12" SPECIAL EXTENSION.  
 APPROVED FOR SAN DIEGO GAS & ELECTRIC CO. SPEC. 3316.  
 WEIGHT FOR ASSEMBLY AS SHOWN = 23,190#.  
 WEIGHT FOR ASSEMBLY W/12" SPECIAL EXTENSION SECTION = 25,365#.

## GENERAL NOTES:

1. Minimum soil bearing capacity is hereby assumed to be 2000 PSF unless otherwise documented by a geotechnical report that shall be provided to Jensen Precast by the end user. Jensen Precast shall not be held responsible for the soil bearing capacity.
2. Installation of Manholes, Vaults, Handholes, Meter Boxes etc. will be as per Jensen installation procedures.
3. Structural modification to the Jensen line of products is not permitted without prior written approval from Jensen Engineering Department.
4. Do not scale the drawings; verify all dimensions including rough openings, if any discrepancies are found, notify the Jensen Engineer immediately.
5. The Jensen Engineer will interpret the intent of the drawings in case of possible conflict or discrepancy.
6. Permissible Variations:  
 Dimensional Tolerances - The length, width, height, or dia. measurements of the structure when measured on the inside surfaces shall not deviate from design dimensions by more than the following:  
 Tolerance:  
 0 to 5 Feet 1/4"  
 5 to 10 Feet 3/8"  
 10 to 20 Feet as agreed upon between the supplier and purchaser.  
 Squariness Tolerance:  
 The inside of the precast concrete component shall be square as determined by diagonal measurements. The difference between such measurements shall not exceed the following:  
 Measured Length: Allowable Difference  
 0 to 10 Feet 1/2"  
 10 to 20 Feet 3/4"  
 20 Feet and over as agreed upon between the supplier and purchaser.
- 7.



K586-SE69-10T  
 PER S.D.G. & E. SPECS. 3316  
 03-01-02



K586-SE69-10T  
 PER S.D.G. & E. SPECS. 3316  
 03-01-02

#	DATE	DESCRIPTION	BY