

4'-0" x 6'-6" SDG&E PARKWAY HANDHOLE x 6'-0" DEEP-3315

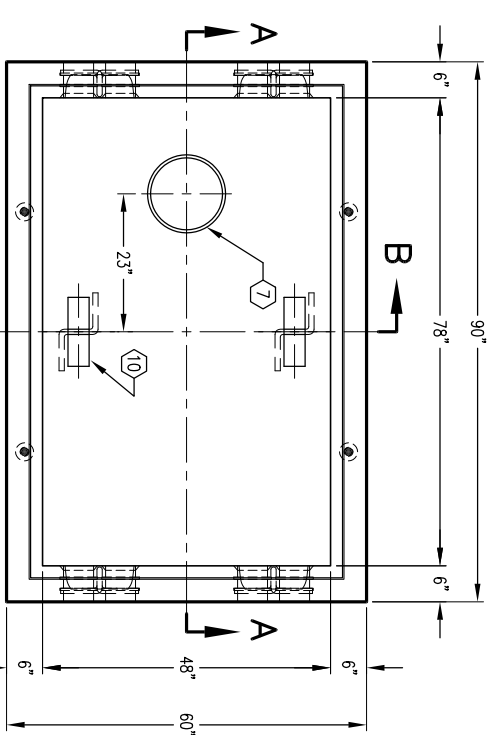
NOTES:

- CONCRETE IS DESIGNED FOR H-20-44 TRAFFIC LOADING USING 5,500 PSI [37.92MPa] COMPRESSIVE STRENGTH CONCRETE AND 60,000 PSI [413.2MPa] YIELD STRENGTH ASTM A-706 STEEL REINFORCEMENT PER CALCS. #31725.
- STEEL COVER DESIGNED FOR PARKWAY LOADING.
- HANDHOLE TO BE PLACED ON A 6" BASE OF CRUSHER RUN FOR EASE OF INSTALLATION AND EVEN LOAD DISTRIBUTION.
- ALL INTERIOR SURFACES SHALL BE PAINTED WITH ONE COAT OF FLAT WHITE LATEX PAINT.
- VAULT EXTERIOR SHALL BE COATED WITH AN APPROVED, TRANSPARENT, WATERPROOFING SEALER.
- STRUCTURE SHALL BE STENCILED, "JENSEN PRECAST", WITH "TIME" AND "DATE OF POUR" AND S.D.G. & E. STOCK NUMBER ON INTERIOR AND EXTERIOR OF WALLS.
- 7/8" X 1 3/4" CONSEAL GASKET (45 FT. REQ'D) WILL BE SHIPPED WITH EACH HANDHOLE.

JENSEN PART NO.	S.D.G. & E. STOCK NO.
PB466-B60-10	334356
PB466-T12-10	361354
SC466-GV-10	286980
PB466-R24	336240
PB466-R12	336246

ORDERING INFORMATION:
K466-FH72-10P FOR ASSEMBLY AS SHOWN.
K466-FH84-10P FOR ASSY. WITH 12" EXT.
K466-FH96-10P FOR ASSY. WITH 24" EXT.
TOTAL WEIGHT OR ASSEMBLY AS SHOWN 16,430 lbs.
TOTAL WEIGHT OF ASSEMBLY WITH 12" EXT. IS 18,155 lbs.
TOTAL WEIGHT OF ASSEMBLY WITH 24" EXT. IS 19,880 lbs.

PER S.D.G. & E. SPEC. 3315

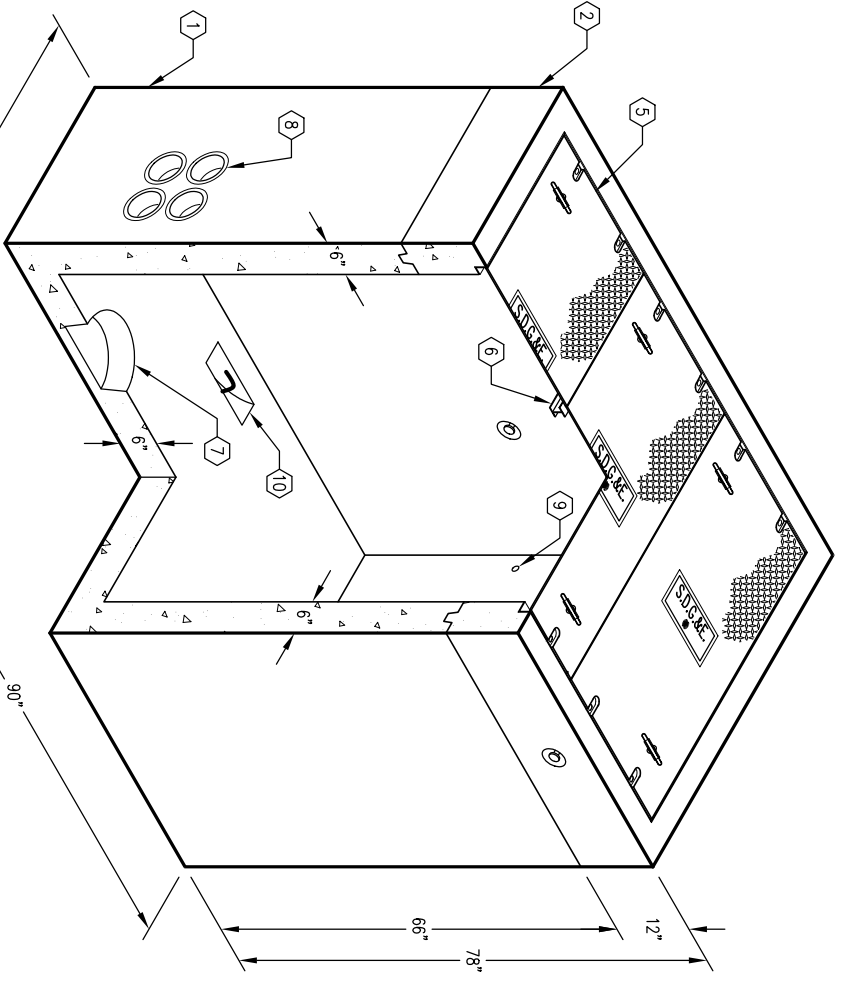


PLAN VIEW

- GENERAL NOTES:**
1. Minimum soil bearing capacity is hereby assumed to be 2000 PSF unless otherwise documented by a geotechnical report that shall be provided to Jensen Precast by the end user. Jensen Precast shall not be held responsible for the soil bearing capacity.
 2. Installation of Manholes, Vaults, Handholes, Meter Boxes etc. will be as per Jensen installation procedures.
 3. Structural modification to the Jensen line of products is not permitted without prior written approval from Jensen Engineering Department.
 4. Do not scale the drawings, verify all dimensions including rough openings, if any discrepancies are found, notify the Jensen Engineer immediately.
 5. The Jensen Engineer will interpret the intent of the drawings in case of possible conflict or discrepancy.
 6. Permissible Variations:
 - Dimensional Tolerances – The length, width, height, or dia. measurements of the structure when measured on the inside surfaces shall not deviate from design dimensions by more than the following:

Dimensions:	Tolerance:
0 to 5 Feet	1/4"
5 to 10 Feet	3/8"
10 to 20 Feet	as agreed upon between the supplier and purchaser.
 - Squareness Tolerance: The inside of the precast concrete component shall be square as determined by diagonal measurements. The difference between such measurements shall not exceed the following:

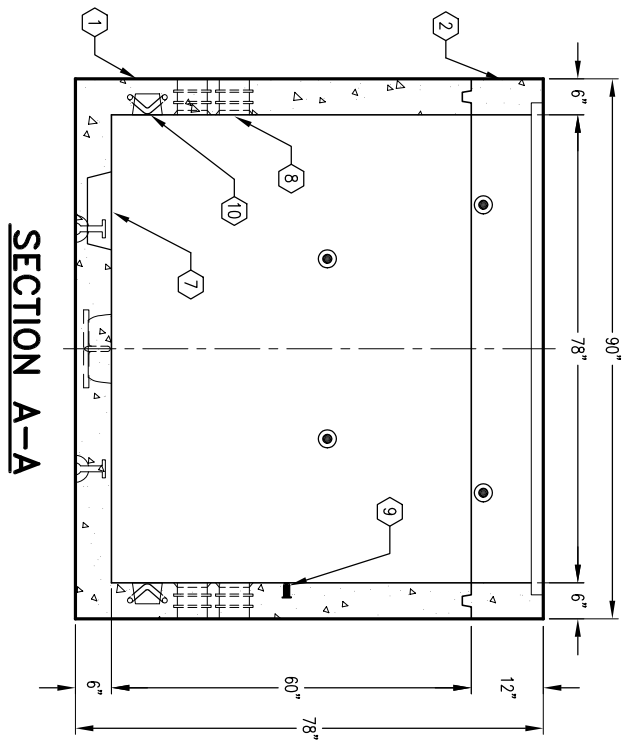
Measured Length:	Allowable Difference
0 to 10 Feet	1/2"
10 to 20 Feet	3/4"
 7. 20 Feet and over as agreed upon between the supplier and purchaser.



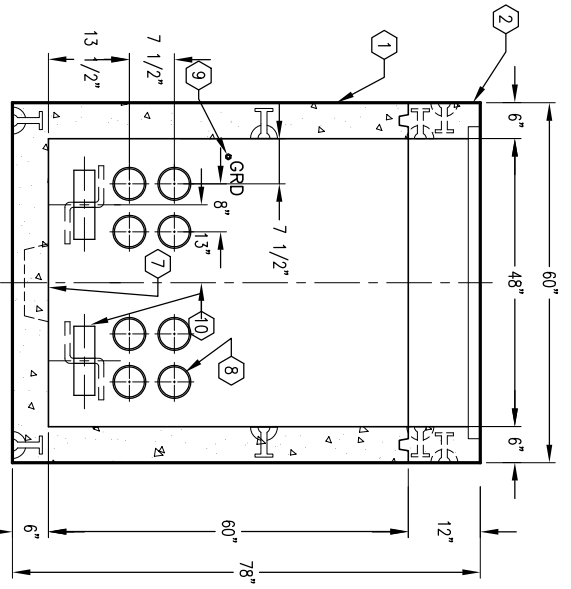
MINIMUM EXCAVATION SIZE:
6'-0" x 8'-10" x DEPTH REQ'D.

K466-FH72-10P

PER S.D.G. & E. SPEC. 3315



SECTION A-A



SECTION B-B

JENSEN PRECAST

#	DATE	DESCRIPTION	BY

K466-FH72-10P

PER S.D.G. & E. SPEC. 3315