

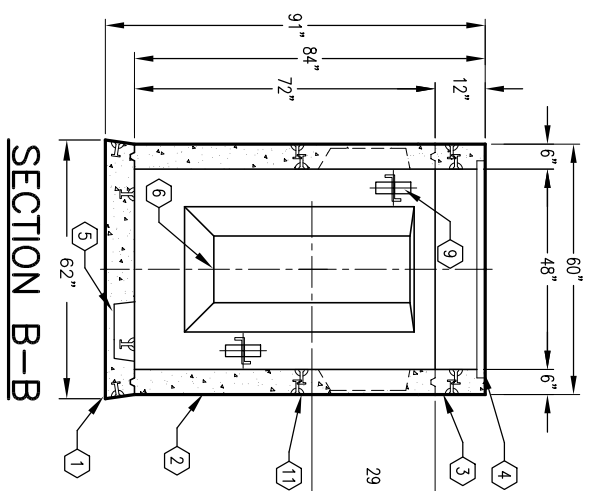
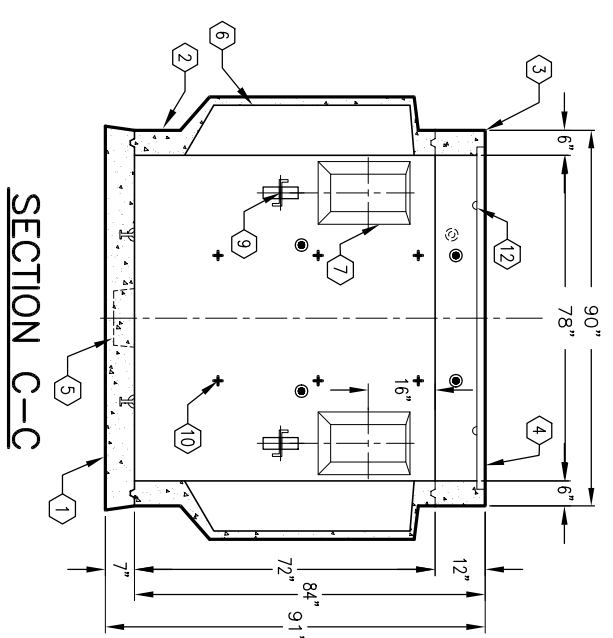
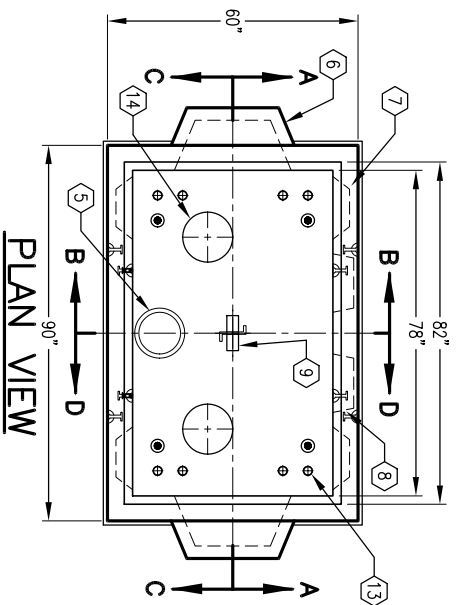
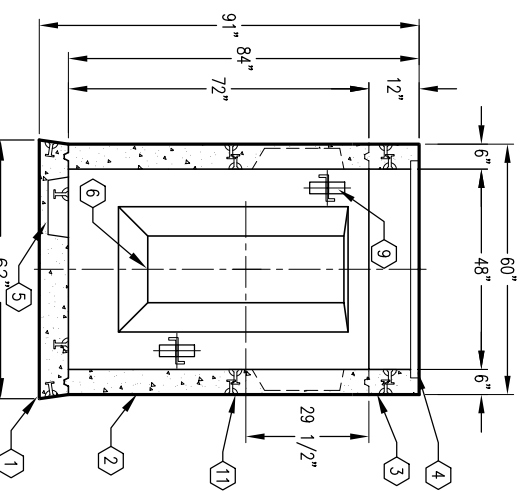
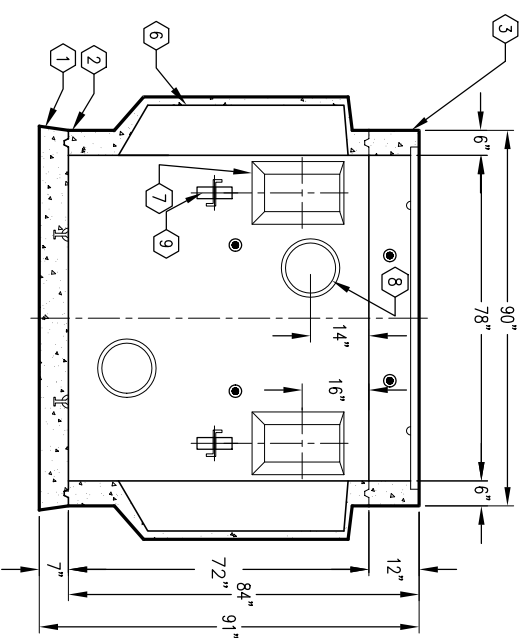
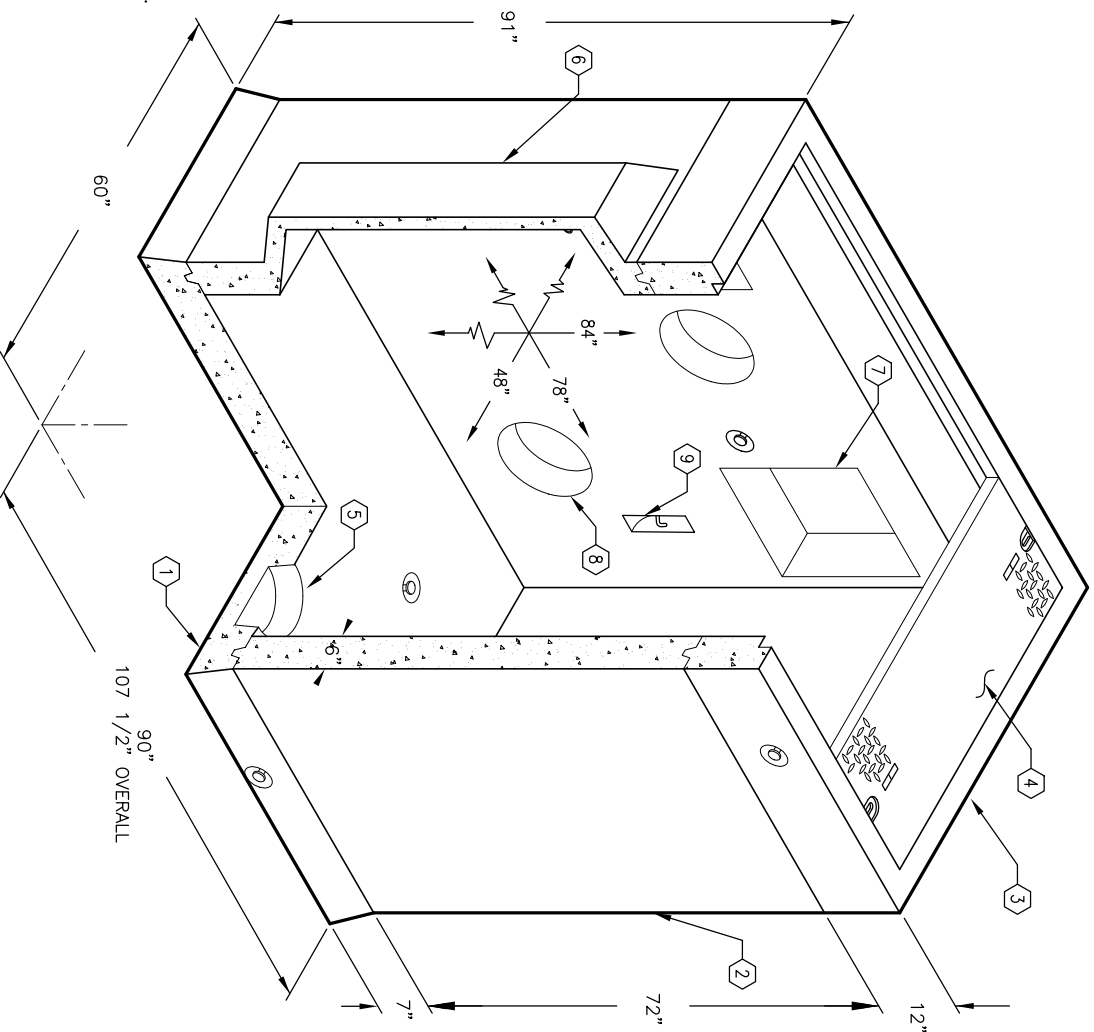
4'-0" x 6'-6" LADWP PARKWAY RPM SWITCH ENCLOSURE x 84" DEEP

NOTES:

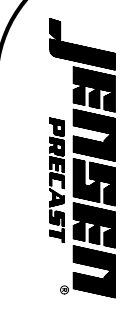
- MANHOLE DESIGNED IN ACCORDANCE WITH AASHTO H-20-44 TRAFFIC BRIDGE LOADING USING 5,500 PSI COMPRESSIVE STRENGTH CONCRETE AND 60,000 PSI YIELD STRENGTH ASTM A-706 STEEL REINFORCING PER CALCS. #30387.
 - MANHOLE TO PLACED ON A MIN. 6" BASE OF CRUSHER RUN FOR EASE OF INSTALLATION AND EVEN LOAD DISTRIBUTION.
 - CONCRETE MIX USED IN POURING THIS PRODUCT SHALL USE FLY ASH AS AN ADMIXTURE.
 - EACH CONCRETE SECTION SHALL BE MARKED ON THE INSIDE & OUTSIDE WITH "JENSEN PRECAST" THE DESIGNATION "DW/FA.", AND THE DATE OF POUR.
 - EACH CONCRETE SECTION SHALL HAVE CAST-IN ON THE INSIDE "JENSEN", THE YEAR, AND THE DESIGNATION "FA."
- THE FOLLOWING MATERIAL TO BE SHIPPED WITH MANHOLE:
(a) 7/8" x 1 3/4" CONSEAL (69 FT. REQ'D.)
- ORDERING INFORMATION:
- K466-SE84-12P FOR ASSEMBLY AS SHOWN.
PER LADWP SPEC G-286 G-1, R26.
TOTAL WEIGHT OF ASSEMBLY IS 16,489#.
1. UV466-B-12, 7" BASE SLAB, WT. 3,327#.
 2. UV466-172-12, 72" INTERMEDIATE SECTION, WT. 9,670#.
 3. PB466-112-12, 12" THICK TOP SECTION, WT. 1,767#.
 4. W/F/FRAME (F466-PB-RPM) CAST IN.
 5. 3 PIECE PARKWAY RPM COVER. (CA466-RPM-12).
 6. 12" x 13" DIA. SUMP x 5" DEEP
 7. LOCATE AS FOLLOWS: BASE SLAB (1) TABLE MTD.
 8. 18" x 44" DUCTED KNOCKOUT x 1'2" DEEP. DRAFT AS FOLLOWS: INTERMEDIATE SECTION (2) CORE MTD.
 9. 9" x 18" KNOCKOUT x 4" DEEP. DRAFT AS FOLLOWS: INTERMEDIATE SECTION (2) CORE MTD.
 10. S1=S2=B=3". LOCATE AS FOLLOWS: INTERMEDIATE SECTION (4) CORE MTD.
 11. 12" x 14" VENT KNOCKOUT x 5" DEEP (5000-361). LOCATE AS FOLLOWS: INTERMEDIATE SECTION (2) CORE MTD.
 12. 7/8" DIA. PULL IRON. LOCATE AS FOLLOWS: BASE SLAB (1) CORE MTD.
 13. 1/2" PLASTIC INSERT. LOCATE AS FOLLOWS: INTERMEDIATE SECTION (6) CORE MTD.
 14. CLEANOUT HOLES (4) CORE MTD.
 15. 2" DIA. TERMS W/1" DIA. GROUND ROD KNOCKOUT. LOCATE AS FOLLOWS: BOTTOM SECTION (8) CORE MTD.
 16. 12" DIA. KNOCKOUT. LOCATE AS FOLLOWS: BOTTOM SECTION (2) CORE MTD.

GENERAL NOTES:

1. Minimum soil bearing capacity is hereby assumed to be 2000 PSF unless otherwise documented by a geotechnical report that shall be provided to Jensen Precast by the end user. Jensen Precast shall not be held responsible for the soil bearing capacity.
2. Installation of Manholes, Vaults, Handholes, Meter Boxes etc. will be as per Jensen installation procedures.
3. Structural modification to the Jensen line of products is not permitted without prior written approval from Jensen Engineering Department.
4. Do not scale the drawings, verify all dimensions including rough openings, if any discrepancies are found, notify the Jensen Engineer immediately.
5. The Jensen Engineer will interpret the intent of the drawings in case of possible conflict or discrepancy.
6. Permissible Variations:
 - Dimensional Tolerances – The length, width, height, or dia. measurements of the structure when measured on the inside surfaces shall not deviate from design dimensions by more than the following:
 - Dimensions: Tolerance:
 - 0 to 5 Feet 1/4"
 - 5 to 10 Feet 3/8"
 - 10 to 20 Feet as agreed upon between the supplier and purchaser.
 - Squareness Tolerance: The inside of the precast concrete component shall be square as determined by diagonal measurements. The difference between such measurements shall not exceed the following:
 - Measured Length: Allowable Difference
 - 0 to 10 Feet 1/2"
 - 10 to 20 Feet 3/4"
7. 20 Feet and over, as agreed upon between the supplier and purchaser.



K466-SE84-12P
PER LADWP SPEC. G-286 Cl. R26



#	DATE	DESCRIPTION	BY

K466-SE84-12P
PER LADWP SPEC. G-286 Cl. R26