

6'-0" x 8'-0" 75 TO 500 KVA TRANSFORMER PAD x 8" THICK

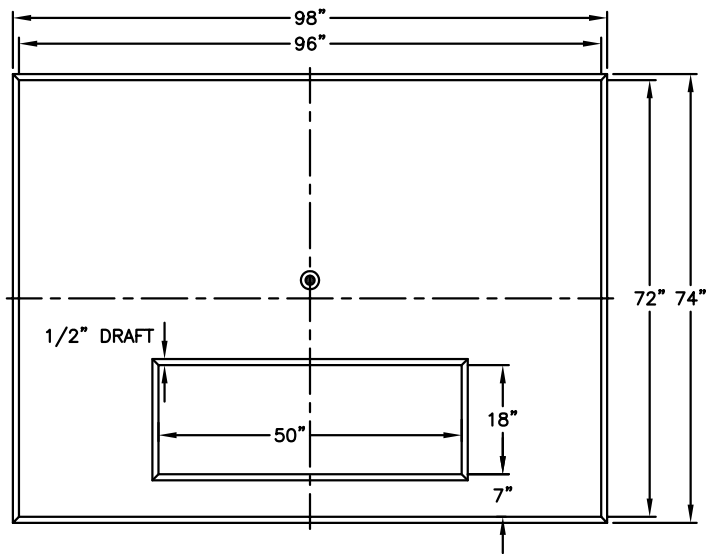
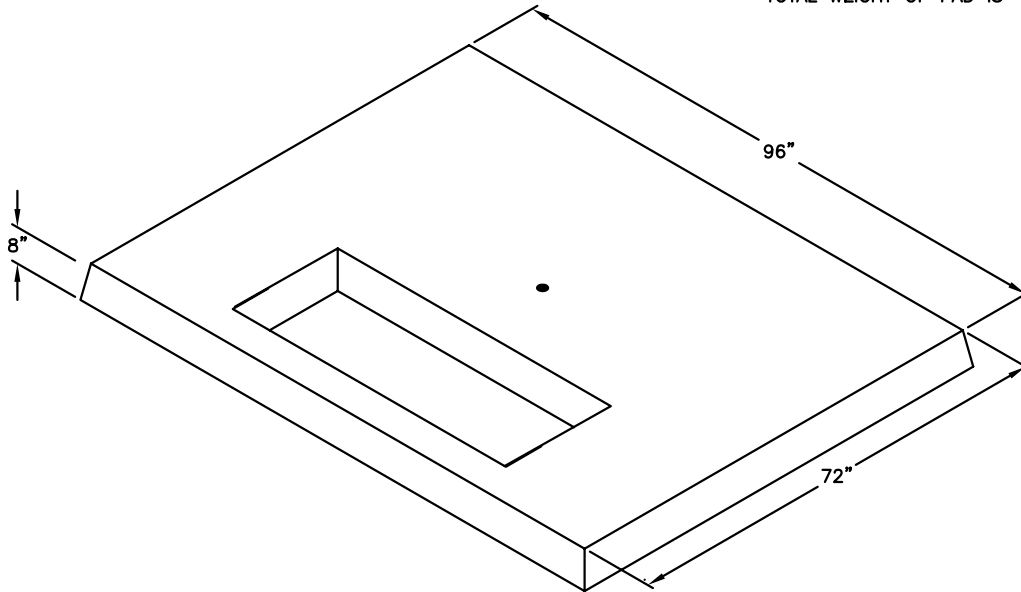
NOTES:

- CONCRETE DESIGNED IN ACCORDANCE WITH ASHTO H-20-44 TRAFFIC BRIDGE LOADING USING 5,500 PSI [37.92MPa] COMPRESSIVE STRENGTH CONCRETE AND 60,000 PSI [413.2MPa] YIELD STRENGTH ASTM A-706 STEEL REINFORCEMENT PER CALCS.
- OPENING SHALL BE FILLED IN FIELD WITH MINIMUM OF 3" REDI-CRETE MORTAR (OR EQUIVALENT).

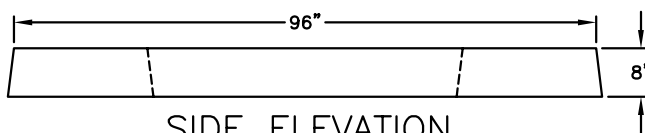
1. PD7296-T8-25, 8" TRANSFORMER PAD (CG-PD7296-25 (XXX), WT. 4,300 Lbs.
2. 18" x 50" HOLE W/ 1/2" DRAFT.

ORDERING INFORMATION:

PD7296-T8-25 FOR PAD AS SHOWN.
 PER IMPERIAL IRRIGATION.
 TOTAL WEIGHT OF PAD IS 4,300 Lbs.



PLAN VIEW



SIDE ELEVATION



AUTOCAD REL 14

#	DATE	DESCRIPTION	BY

PD7296-T8-25

PER I.I.D. 01-01-02 D-25

08-15-03