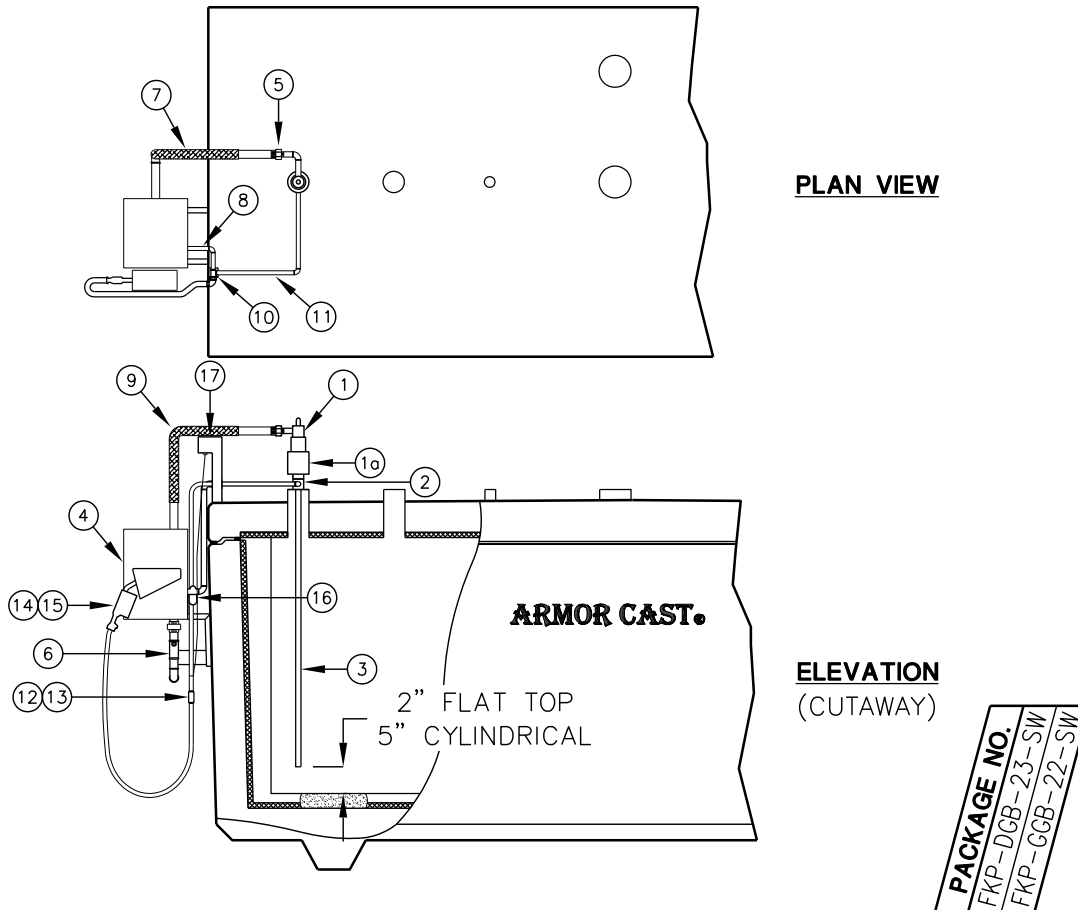


AST PUMP PACKAGE NO. 5

SIDE MOUNT PUMP PACKAGE,

WEIGHTS AND MEASURES



PLAN VIEW

**ELEVATION
(CUTAWAY)**

PACKAGE NO.
FKP-DGB-23-SW
FKP-GGB-22-SW

NO.	DESCRIPTION		
1	1 1/2" ANTI-SIPHON VALVE	•	•
1a	2" x 1 1/2" DOUBLE TAP	•	•
2	2" x 2" x 3/4" TEE	•	•
3	1 1/2" DIA. SUCTION PIPE	•	•
4	GASBOY 9122 OR 9124 (GASOLINE)		•
4a	GASBOY 9123 OR 9125 (DIESEL)	•	
5	1 1/2" BALL VALVE	•	•
6	1 1/2" DIA. SAFETY / SHEAR VALVE (OPTIONAL)	0	0
7	1 1/2" DIA. SUPPLY PIPE TO PUMP (SCHEDULE 40)	0	0
8	3/4" DIA. SUPPLY PIPE TO ADAPTER (#10)		•
9	1 1/2" DIA. STAINLESS STEEL FLEX CONNECTOR (OPTIONAL)	•	•
10	VAPOR RECOVERY COAXIAL ADAPTER		•
11	3/4" DIA. VAPOR RETURN LINE (SCHEDULE 40) (TEE INTO VENT PIPE)		•
12	3/4" DIA. HOSE, SWIVEL, AND BREAKAWAY	•	
13	COAXIAL HOSE, AND BREAKAWAY		•
14	AUTO NOZZLE FOR DIESEL	•	
15	STAGE II VAPOR RECOVERY AUTO NOZZLE		•
16	3/4" FILTER AND FILTER BLOCK	•	•
17	HIGH HOSE RETRACTOR W/ STAND		•

1. STANDARD SPEED – 1/3 H.P. ECONOMY SIDE MOUNT PUMP PACKAGE.

2. MEDIUM SPEED – 1/2 H.P. ECONOMY SIDE MOUNT PUMP PACKAGE.

3. HIGH SPEED – 3/4 H.P. HEAVY DUTY ECONOMY SIDE MOUNT PUMP PACKAGE.

FOR COMPLETE DESIGN AND PRODUCT INFORMATION, CONTACT JENSEN PRECAST.