

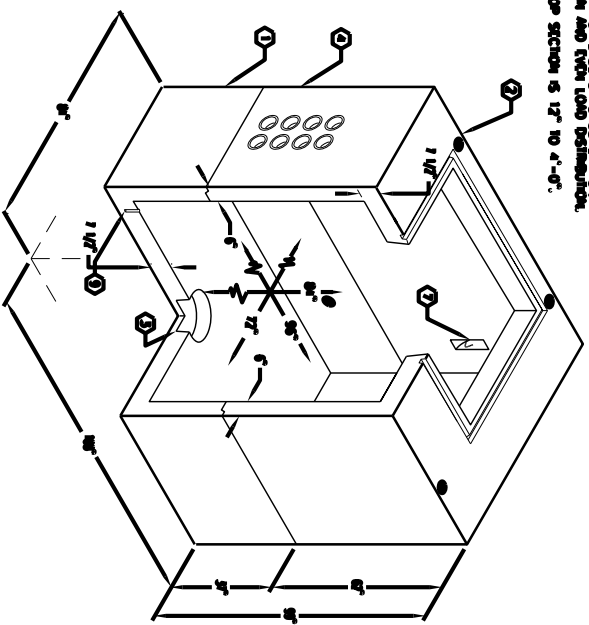
# 6'-0" x 8'-0" FLAT WALL VAULT x 7'-0" DEEP

## MATERIAL LIST

ITEM	PART NO.	DESCRIPTION	CAGE NO./LOCATE	WEIGHT/MOUNT
1	UV68-B28-31	28" BOTTOM SECTION	CG-68-B28-05(88)	11,300 lbs
2	UV68-156-31V	56" TOP SECTION	CG-68-156-31V	14,550 lbs
3	KNOCK OUT	13" DIA. x 14" DIA. SUMP x 5" DEEP	BOTTOM SECTION	(1) CORE
4	55-30-52	5" DIA. TERMINATORS SQH.40	TOP SECTION	(32) CORE
5	KNOCK OUT	18" x 18" KNOCK OUT x 4 1/2" DEEP	TOP SECTION	(2) CORE
6	KNOCK OUT	12" DIA. VENT KNOCK OUT x 5" DEEP	TOP SECTION	(2) CORE
7	55-35-03	7/8" DIA. x 4-1/2" GALV. PULL IRON	TOP SECTION	(2) CORE
8	55-35-03	7/8" DIA. x 4-1/2" GALV. PULL IRON	BOTTOM SECTION	(4) CORE
9	55-10-425	1/2" THREADED BRONZE INSERT BRAZED IN STRUCTURAL STEEL REBAR "GRD" SHALL BE STEICLED IN RED LETTERS (1 1/2" MIN., 2" MAX) ON THE CONCRETE ABOVE EACH INSERT	TOP SECTION BOTTOM SECTION	(4) CORE (2) CORE
10				
11				
12				
13	KNOCK OUT	1" DIA. BLIND GROUND ROD HOLE	BOTTOM SECTION	(2) CORE

- NOTES:**
- WALL EXPOSED IN ACCORDANCE WITH ABOVE
  - 10-20-44 MANTIC KNOCK LUNING USING 2,500 PSI (15,000) COMPRESSIVE STRENGTH CONCRETE AND 4,000 PSI (11,250) TENSILE STRENGTH 1-1/8" STEEL REBAR/ANCHOR PER C.A.C.S. 215150L.
  - ALL ATTACHED SURFACES SHALL BE FINISHED WITH O.K. COAT OF FULL GRAIN WHITE PAINT.
  - WALL TO BE PLACED ON A 6" BKG. OF CONCRETE WITH TOP LAG OF INSULATION AND EARTH LOAD DISTRIBUTION.
  - LAGS OF CONCR OVER TOP SECTION IS 12" TO 4'-0".

**GENERAL INFORMATION:**  
 888-794-31 FOR ASSEMBLY AS SHOWN.  
 CITY OF ALBUQUERQUE Dwg. 0106.  
 TOTAL WEIGHT OF ASSEMBLY SHOWN IS 25,850 LBS.



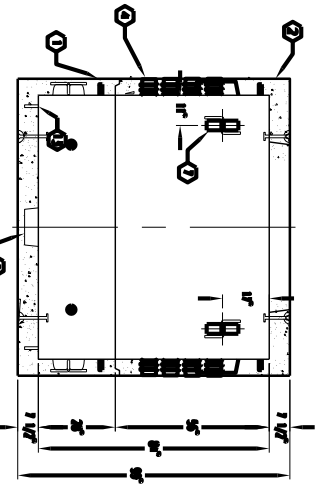
MINIMUM EXCAVATION SIZE:  
 8'-0" x 13'-6" x DEPTH REQ'D

K68-FV84-31

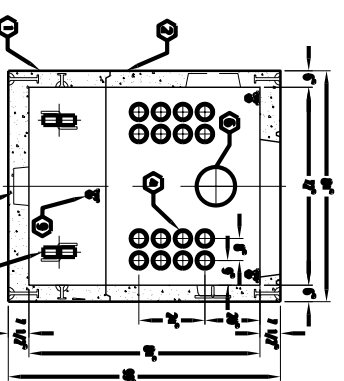
PER CITY OF ALBUQUERQUE DWG 0106 10-01-03



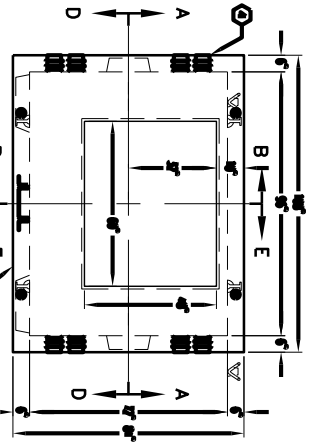
ALBUQUERQUE, NM 87106



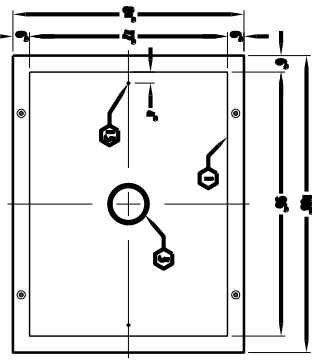
SECTION A-A



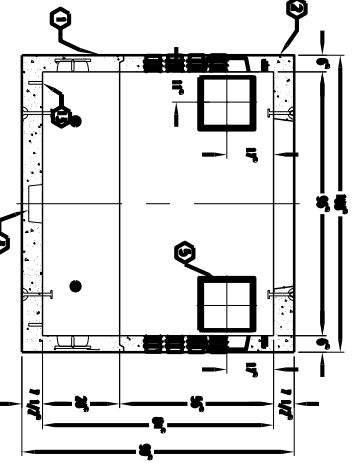
SECTION B-B



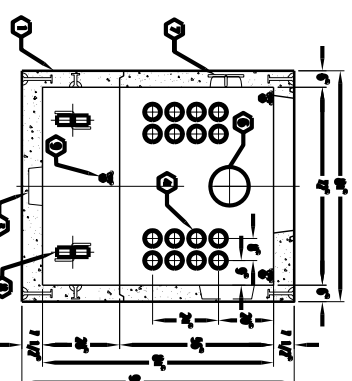
PLAN VIEW



BOTTOM PLAN VIEW



SECTION D-D



SECTION E-E



K68-FV84-31

PER CITY OF ALBUQUERQUE DWG 0106 10-01-03