

# 8'-0" x 10'-0" ANAHEIM TRAFFIC VAULT x 7'-6" DEEP

**NOTES:**

- VAULT DESIGNED IN ACCORDANCE WITH AASHTO HS 20-44 TRAFFIC BRIDGE LOADING USING 5,500 PSI [37.92MPa] COMPRESSIVE STRENGTH CONCRETE AND 60,000 PSI [413.2MPa] YIELD STRENGTH ASTM A-706 STEEL REINFORCEMENT PER CALCS.#31404.
  - COVER DESIGNED FOR TRAFFIC LOADING PER CALCS. #30476.
  - VAULT TO BE PLACED ON A MIN. 6" BASE OF CRUSHER RUN FOR EASE OF INSTALLATION AND EVEN LOAD DISTRIBUTION.
  - LIMITS OF COVER OVER ROOF SECTION IS 12" TO 4'-0".
  - ALL INTERIOR WALL ARE TO BE PAINTED WITH 2 COATS OF WHITE LATEX FLAT PAINT (FRAZEE #410 OR EQUAL)
  - ALL JOINTS ARE TO BE GASKETED WITH CONSEAL
- THE FOLLOWING MATERIAL TO BE SHIPPED WITH EACH VAULT:  
(0) 7/8" x 1 3/4" CONSEAL GASKET (45 FT. REQ'D.)

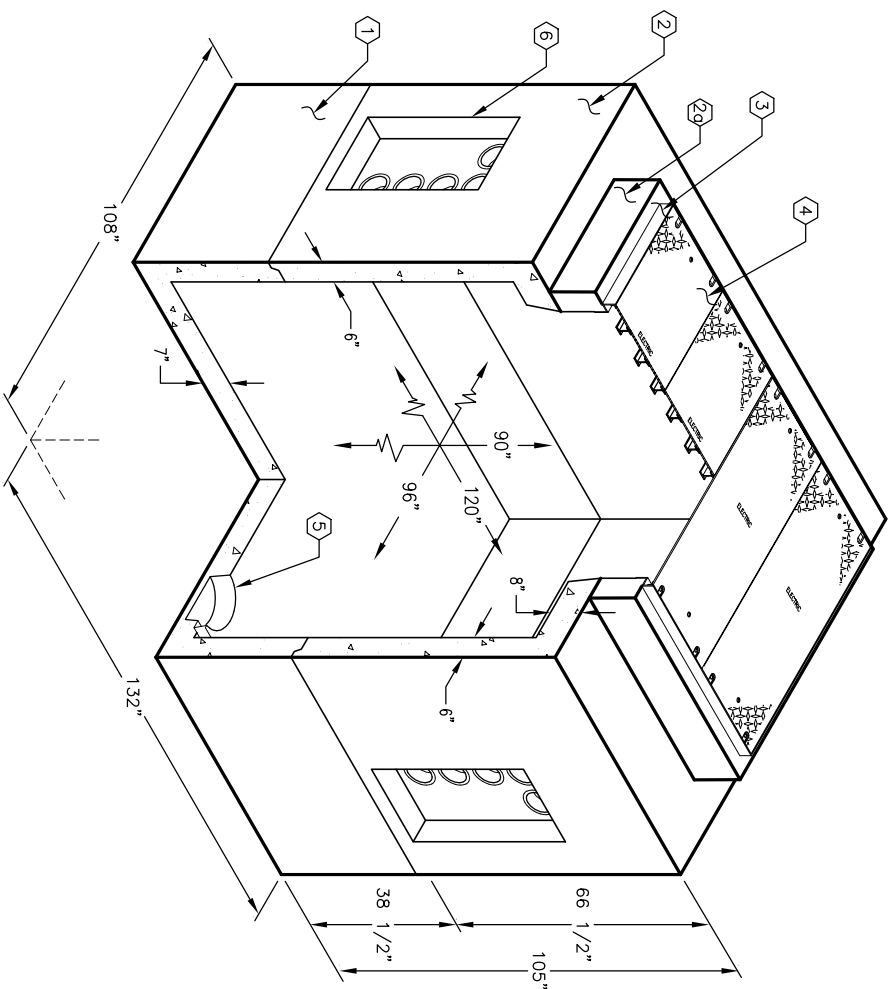
**ORDERING INFORMATION:**

K810-FV90-16T FOR ASSEMBLY AS SHOWN.  
PER CITY OF ANAHEIM SPEC. CU 1600 3G  
TOTAL WEIGHT OF ASSEMBLY SHOWN IS 37,863 Lbs.

**GENERAL NOTES:**

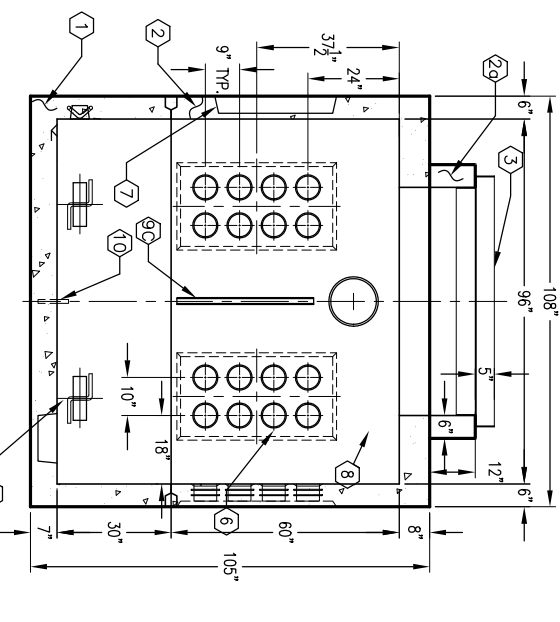
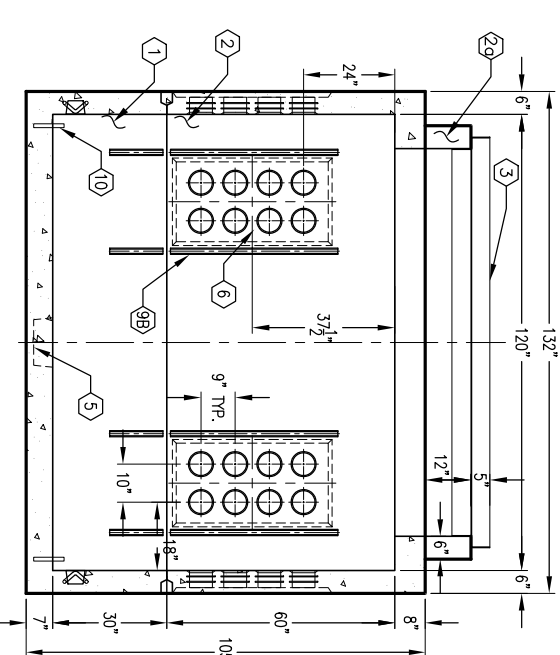
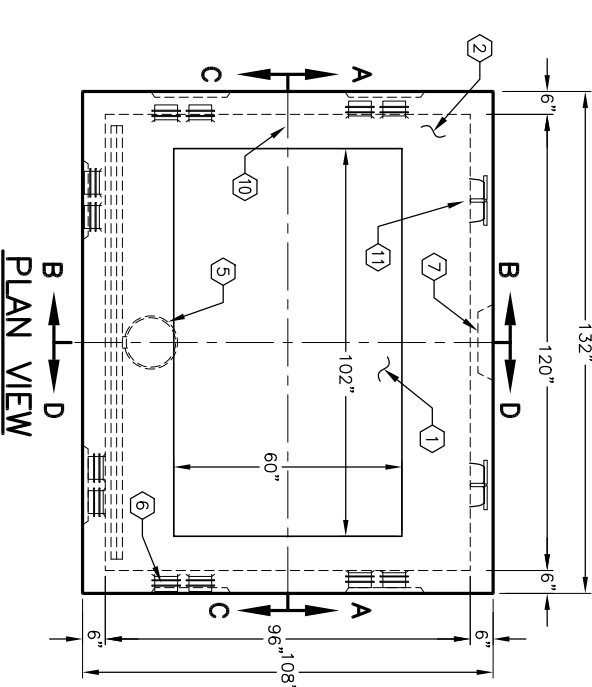
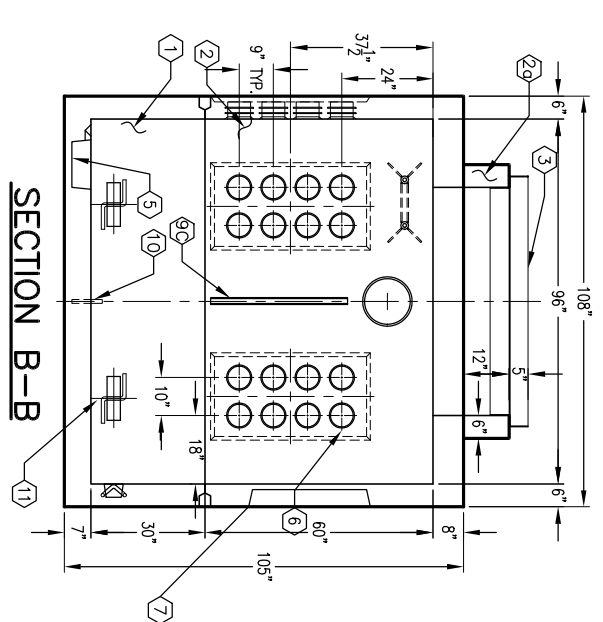
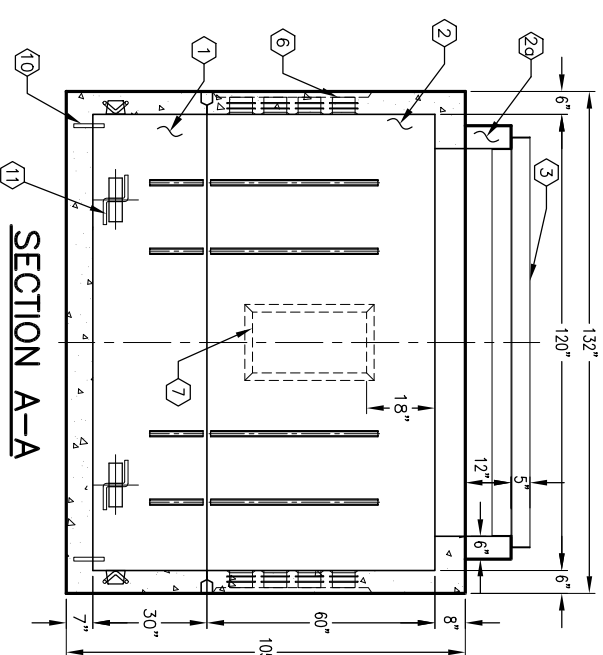
1. Minimum soil bearing capacity is hereby assumed to be 2000 PSF unless otherwise documented by a geotechnical report that shall be provided to Jensen Precast by the end user. Jensen Precast shall not be held responsible for the soil bearing capacity.
2. Installation of Manholes, Vaults, Handholes, Meter Boxes etc. will be as per Jensen installation procedures.
3. Structural modification to the Jensen line of products is not permitted without prior written approval from Jensen Engineering Department.
4. Do not scale the drawings, verify all dimensions including rough openings, if any discrepancies are found, notify the Jensen Engineer immediately.
5. The Jensen Engineer will interpret the intent of the drawings in case of possible conflict or discrepancy.
6. Permissible Variations:  
Dimensional Tolerances – The length, width, height, or dia. measurements of the structure when measured on the inside surfaces shall not deviate form design dimensions by more than the following:  
Dimensions:                    Tolerance:  
0 to 5 Feet                    1/4"  
5 to 10 Feet                   3/8"  
10 to 20 Feet as agreed upon between the supplier and purchaser.  
Squariness Tolerance:  
The inside of the precast concrete component shall be square as determined by diagonal measurements. The difference between such measurements shall not exceed the following:  
Measured Length: Allowable Difference  
0 to 10 Feet                   1/2"  
10 to 20 Feet                   3/4"  
20 Feet and over as agreed upon between the supplier and purchaser.
- 7.

1. U#810-B30-16, 30" BOTTOM SECTION, WT. 15,788 Lbs.
2. U#810-160-16, 60" TOP SECTION, WT. 19,900 Lbs.
- 2a. PB586-R12-FF, 12" RING SECTION, WT. 2,175 Lbs.
3. F586-PB-TBD, GALV. TRAFFIC 5" FRAME
4. SC586-TGV-16, (4) PIECE TRAFFIC COVER W/(11) LOOSE I-BEAMS GALV. (SCB586-1131), (16) 1/2" - 13NC x 2 1/2" STAINLESS STEEL HEX HEAD BOLTS, (8) 1" DIA. LIFT HOLES, GALV. TAMPER PLATES, MARKED "ELECTRIC" 1" BEAD WELD LETTERS, WT. 1,602 Lbs.
5. 13" x 14" DIA. SUMP x 5" DEEP, W/RECESS AND COVER PLATE, BOTTOM SECTION (1) CORE MTD.
6. 21" x 40" K.O. x 1 1/2" DEEP, W/(8) EA. 6" DIA. TERMS, DRAFT 1" TYP. TOP SECTION (6) SHELL MTD.
7. 16" x 30" K.O. x 4 1/2" DEEP, 2" DRAFT TYP., TOP SECTION (1) SHELL MTD.
8. 1" DIA. GALV. DOUBLE COIL THRD. INSERT, TOP SECTION (6) CORE MTD.
- 9a. 1 5/8" x 1 5/8" GALV. INSERT, BOTTOM SECTION x 14" LONG (10) CORE MTD.; TOP SECTION x 44" LONG (8) CORE MTD.
- 9b. TOP SECTION x 36" LONG, CORE MTD.
- 9c. 5/8" GROUND ROD ATTACHED TO REBAR, 3" PROJECTION x 7/8" DIA. x 3 3/8" GALV. RECESSED PULL IRON, BOTTOM SECTION (6) CORE MTD.
10. 12" DIA. VENT KNOCKOUT, TOP SECTION (2) CORE MTD.
- 11.
- 12.
- 13.
- 14.



MINIMUM EXCAVATION SIZE:  
10'-0" x 12'-0" x DEPTH REQ'D.

## K810-FV90-16T



### SECTION C-C

### SECTION D-D



## K810-FV90-16T

#	DATE	DESCRIPTION	BY