

2'-6" x 4'-0" CITY OF CORONA DUCTED PULL BOX x 42" DEEP

NOTES:

PULL BOX DESIGNED IN ACCORDANCE WITH AASHTO H-20-44 TRAFFIC BRIDGE LOADING USING 5,500 P.S.I. COMPRESSIVE STRENGTH CONCRETE AND 60,000 P.S.I. YIELD STRENGTH ASTM A-706 STEEL REINFORCING.

PULL BOX TO BE PLACED ON A MIN 6" BASE OF CRUSHER RUN FOR EASE OF INSTALLATION AND EVEN LOAD DISTRIBUTION.

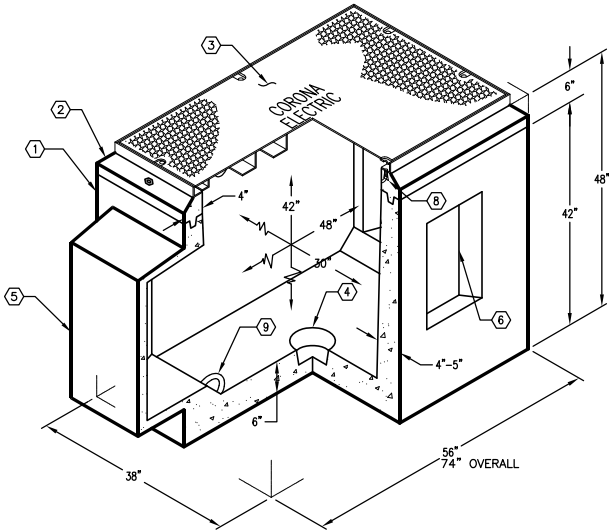
ORDERING INFORMATION:

APPROVED FOR CITY OF CORONA SPEC.
TOTAL WEIGHT OF ASSEMBLY SHOWN IS 3,419 lbs.

1. PB3048D-B36-05, 36" BOTTOM SECTION, WT. 2,936 lbs.
2. PB3048-T6E, 6" TOP SECTION, W/GALV. ANGLE FRAME CAST IN, WT. 213 lbs.
- 3A. SC3048-TGV, ONE PIECE TRAFFIC COVER, GALVANIZED FINISH, MARKED "CORONA ELECTRIC", WT. 270 lbs. (AS SHOWN).
- 3B. 12-20-28, ONE PIECE RPM PARKWAY COVER, MARKED "CORONA ELECTRIC". (NOT SHOWN).
4. 6" x 7" DIA. SUMP x 4" DEEP, BOTTOM SECTION.
5. 25" x 26" DUCTED K.O. x 12" DEEP, BOTTOM SECTION.
6. 8" x 16" K.O. x 3" DEEP, BOTTOM SECTION.
7. 1" DIA. BLIND GROUND ROD HOLE, BOTTOM SECTION.
8. 1/2" P-35-TB INSERT W/CLEAN-OUT HOLE, TOP SECTION.
9. 7/8" DIA. x 9" GALV. VERTICAL PULL IRON, BOTTOM SECTION.

PARKWAY ASSEMBLY WITH RPM COVER K3048-DP42-39P.

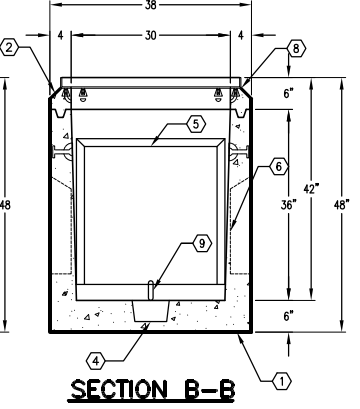
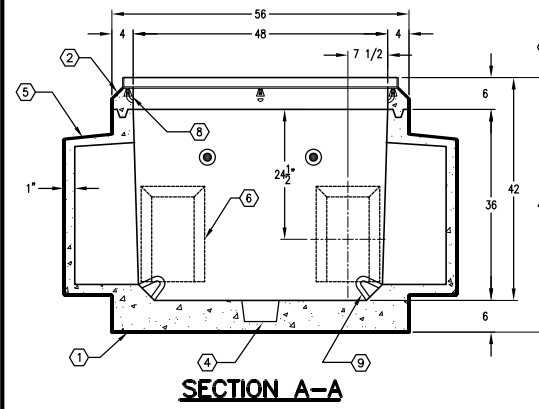
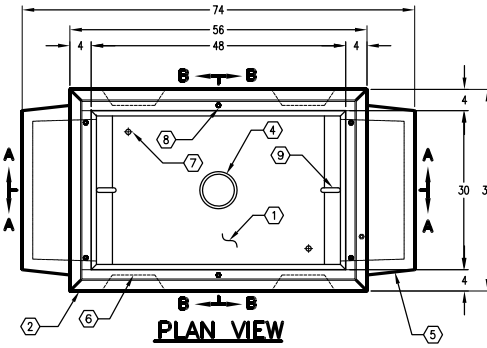
LIGHT TRAFFIC ASSEMBLY WITH STEEL COVER K3048-DP42-39T.



MINIMUM EXCAVATION SIZE:
4'-2" x 7'-2" x DEPTH REQ'D.



K3048-DP42-39
PER CITY OF CORONA SPEC. 04-23-04



#	DATE	DESCRIPTION	BY

K3048-DP42-39
PER CITY OF CORONA SPEC. 04-23-04