

8'-0" x 14'-0" RIVERSIDE MANHOLE x 9'-4" DEEP

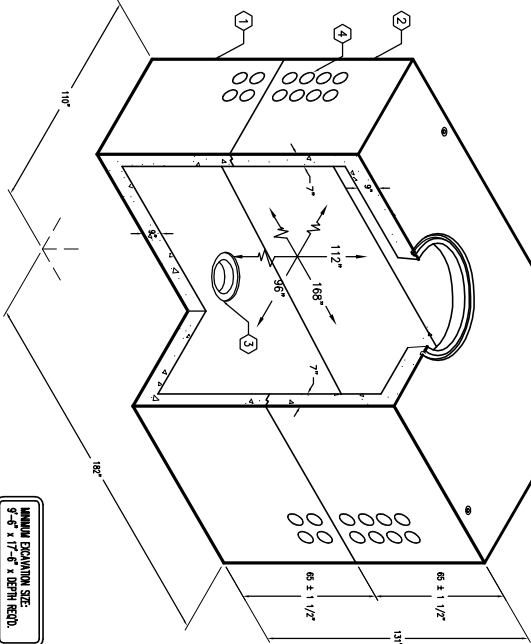
MATERIAL LIST		
ITEM PART NO.	DESCRIPTION	QTY
1	U0814898-21	58 BOTTOM SECTION
2	U0114136-21M	18" TOP SECTION W/36" DIA. OPENING
3	U0114136-21	18" TOP SECTION W/36" DIA. OPENING
4	55-30-92	5" DIA. CONCRETE RINGS
5	55-10-425	1/2" HEADLOD BRONZE GROUND INSERT WELD TO REBAR
6	55-56-03	7/8" DIA. x 4 1/2" GALV. RECESSED PULL IRONS W/LEGS
9	KNOCK OUT	1" DIA. GROUND ROD KNOCKOUT

ORDERING INFORMATION:
 K814FM112-21 FOR ASSEMBLY AS SHOWN.
 APPROVED PER CITY OF RIVERSIDE SPECS.
 TOTAL WEIGHT OF ASSEMBLY SHOWN IS 68,599 lbs.

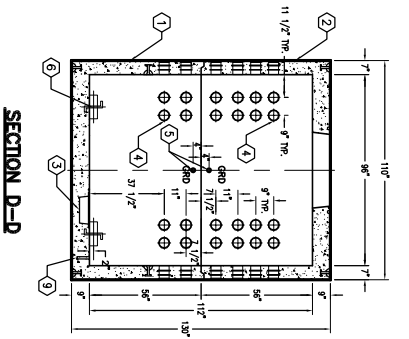
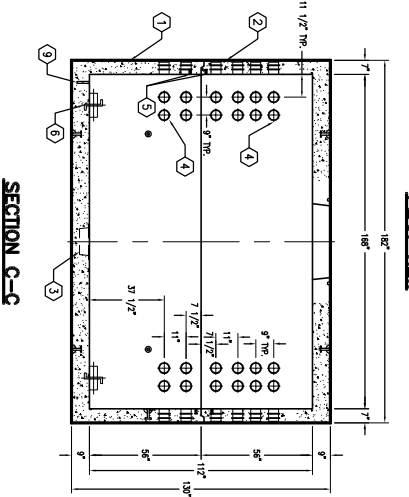
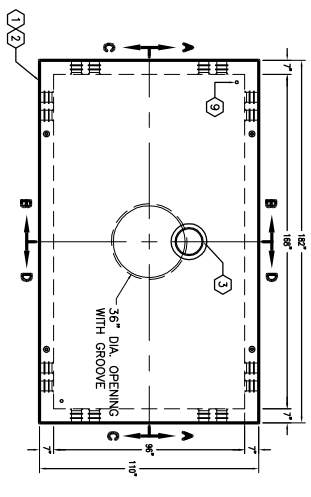
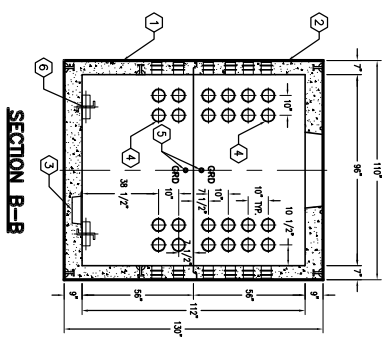
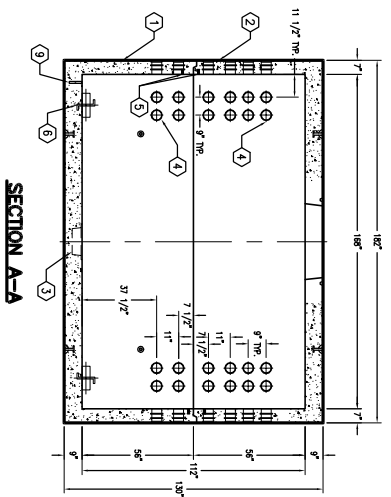
- GENERAL NOTES:**
- Minimum soil bearing capacity is hereby assumed to be 2000 PSF unless otherwise documented by a geotechnical report. The design is provided to Jensen Precast by the end user. Jensen Precast shall not be held responsible for the soil bearing capacity. Installation of Manholes, Vaults, and Structures shall be as per Jensen installation procedures.
 - Structural modification to the Jensen line of products is not permitted without prior written approval from the Engineering Department.
 - Do not scale the drawings, verify all dimensions including rough openings, if any discrepancies are found, notify the Jensen Engineer.
 - The Jensen Engineer will interpret the intent of the drawings in case of possible conflict or discrepancy.
 - Permissible Variations:
 - Dimensional Tolerances: The length, width, and height of the structure when measured on the inside surfaces shall not deviate from design dimensions by more than the following:
 - Dimensions: Tolerance: 1/4"
 - 5 to 3 Feet: 1/8"
 - 3 to 5 Feet: 3/16"
 - 10 to 20 Feet as agreed upon between the supplier and purchaser.
 - Squareness Tolerance: The inside of the precast concrete component shall be square as determined by diagonal measurements. The difference between measurements shall not exceed the following:
 - Measured Length: Allowable Difference 0 to 10 Feet: 1/2"
 - 10 to 20 Feet: 3/4"
 - 20 Feet and over as agreed upon between the supplier and purchaser.



K814-FM112-21
 PER CITY OF RIVERSIDE SPECS.



NOTES:
 VAULT DESIGNED IN ACCORDANCE WITH AASHTO HS 20-44 TRAFFIC BRIDGE LOADING LISTING 5.500 PSI [37.92 MPa] COMPRESSIVE STRENGTH CONCRETE AND 60,000 PSI [413.2 MPa] YIELD STRENGTH ASTM A-706 STEEL REINFORCEMENT PER CALCS. #31008. VAULT TO BE PLACED ON A MIN. 6" BASE OF CRUSHER RUN FOR EASE OF INSTALLATION AND EVEN LOAD DISTRIBUTION.
 LIMIT OF COVER OVER ROOF SECTION IS 1'-6" TO 4'-0".
 WATER TABLE AT 3'-0" BELOW GRADE.
 ALL INTERIOR SURFACES SHALL BE PAINTED WITH ONE COAT OF FLAT LATEX WHITE PAINT.
 STRUCTURES TO BE STENCILED, "JENSEN PRECAST", WITH "PROD. NO." AND "DATE OF POUR".



K814-FM112-21
 PER CITY OF RIVERSIDE SPECS.

DATE	DESCRIPTION	BY