

6'-0" X 12'-0" COLTON MANHOLE X 7' DEEP

NOTES:

- MANHOLE DESIGNED IN ACCORDANCE WITH AASHTO H-20-44 TRAFFIC BRIDGE LOADING USING 5,500 PSI COMPRESSIVE STRENGTH CONCRETE AND 60,000 PSI YIELD STRENGTH ASTM A-706 STEEL REINFORCEMENT PER CALCS. #31094.
- MANHOLE TO BE PLACED ON A MIN. 6" BASE OF CRUSHER RUN FOR EASE OF INSTALLATION AND EVEN LOAD DISTRIBUTION
- LIMIT OF COVER OVER ROOF SECTION IS 1'-6" TO 4'-0"
- LIMIT OF EMBEDMENT OF BOTTOM SECTION IS 10'-8" TO 13'-2"
- ALL WALLS AND CEILINGS TO BE PAINTED WITH WHITE PAINT
- MARK PRODUCT:
 - JENSEN PRECAST
 - DATE OF POUR
 - PART NUMBER
 - WEIGHT

FOLLOWING MATERIALS TO BE SHIPPED WITH MANHOLE:

- (9) 1/2" X 6" GALVANIZED "J" BOLTS (4 REQ'D)
- (6) 7/8" X 1 3/4" CONSEAL GASKET (33 FT. REQ'D)

ORDERING INFORMATION:

K612-FM84-18 FOR ASSEMBLY AS SHOWN
 PER CITY OF COLTON
 TOTAL WEIGHT OF ASSEMBLY IS 32,852 Lbs.

GENERAL NOTES:

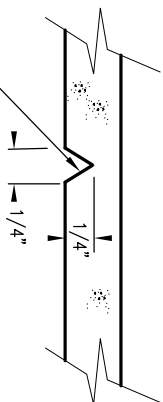
1. Minimum soil bearing capacity is hereby assumed to be 2000 PSF unless otherwise documented by a geotechnical report that shall be provided to Jensen Precast by the end user. Jensen Precast shall not be held responsible for the soil bearing capacity.
2. Installation of Manholes, Vaults, Handholes, Meter Boxes etc. will be as per Jensen installation procedures.
3. Structural modification to the Jensen line of products is not permitted without prior written approval from Jensen Engineering Department.
4. Do not scale the drawings, verify all dimensions including rough openings, if any discrepancies are found, notify the Jensen Engineer immediately.
5. The Jensen Engineer will interpret the intent of the drawings in case of possible conflict or discrepancy.
6. Permissible Variations:
 - Dimensional Tolerances - The length, width, height, or dia. measurements of the structure when measured on the inside surfaces shall not deviate from design dimensions by more than the following:

Dimensions:	Tolerance:
0 to 5 Feet	1/4"
5 to 10 Feet	3/8"
10 to 20 Feet	3/8"
7. between the supplier and purchaser. Squariness Tolerance: The inside of the precast concrete component shall be square as determined by diagonal measurements. The difference between such measurements shall not exceed the following:

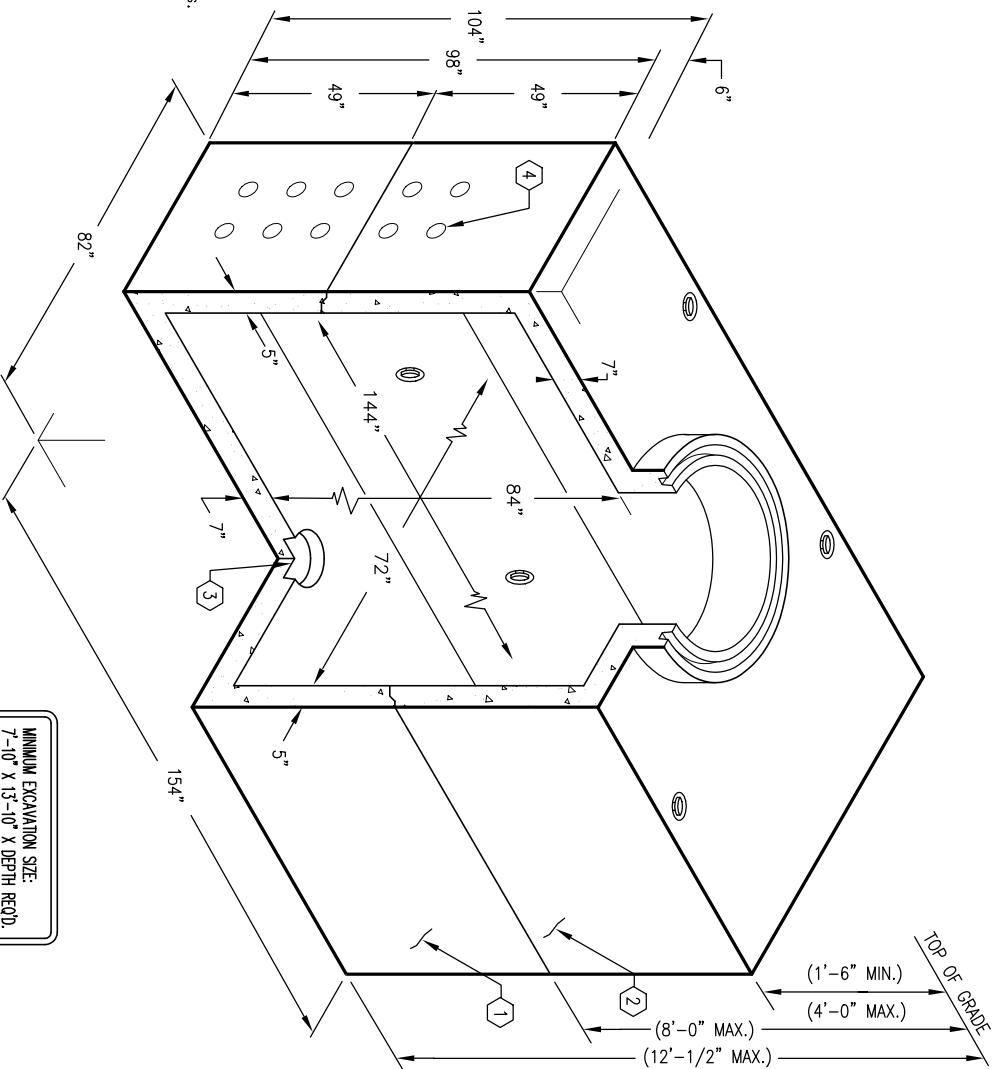
Measured Length:	Allowable Difference
0 to 10 Feet	1/2"
10 to 20 Feet	3/4"

1. UV612-B42-11, 42" BOTTOM SECTION, WT. 16,800 Lbs.
2. UV612-T42-11M, 42" TOP SECTION, WT. 16,052 Lbs.
3. 13" X 14" DIA SUMP X 3" DEEP W/RECESS TO ACCOMMODATE SUMP COVER, BOTTOM SECTION (1) CORE MTD.
4. 6" DIA CONTERMS, BOTTOM SECTION (24) SHELL MTD.
5. 18" X 18" UNREINFORCED PANEL, ROOF SECTION (4) CORE MTD. (SEE NOTCH DETAIL).
6. 7/8" DIA X 6" GALVANIZED PULL IRON, BOTTOM SECTION (4) CORE MTD; TOP SECTION (4) CORE MTD.
7. 1 1/2" THREADED BRONZE INSERT BRAZED TO STRUCTURAL STEEL REBAR "GRD" SHALL BE STENCILED IN RED LETTERS (1 1/2" MIN - 2" MAX) ON THE CONCRETE ABOVE EACH INSERT, BOTTOM SECTION (2) CORE MTD; ROOF SECTION (4) CORE MTD.
8. @1/2" P-36-T INSERT, ROOF SECTION (4) CORE MTD.

NOTCH DETAIL



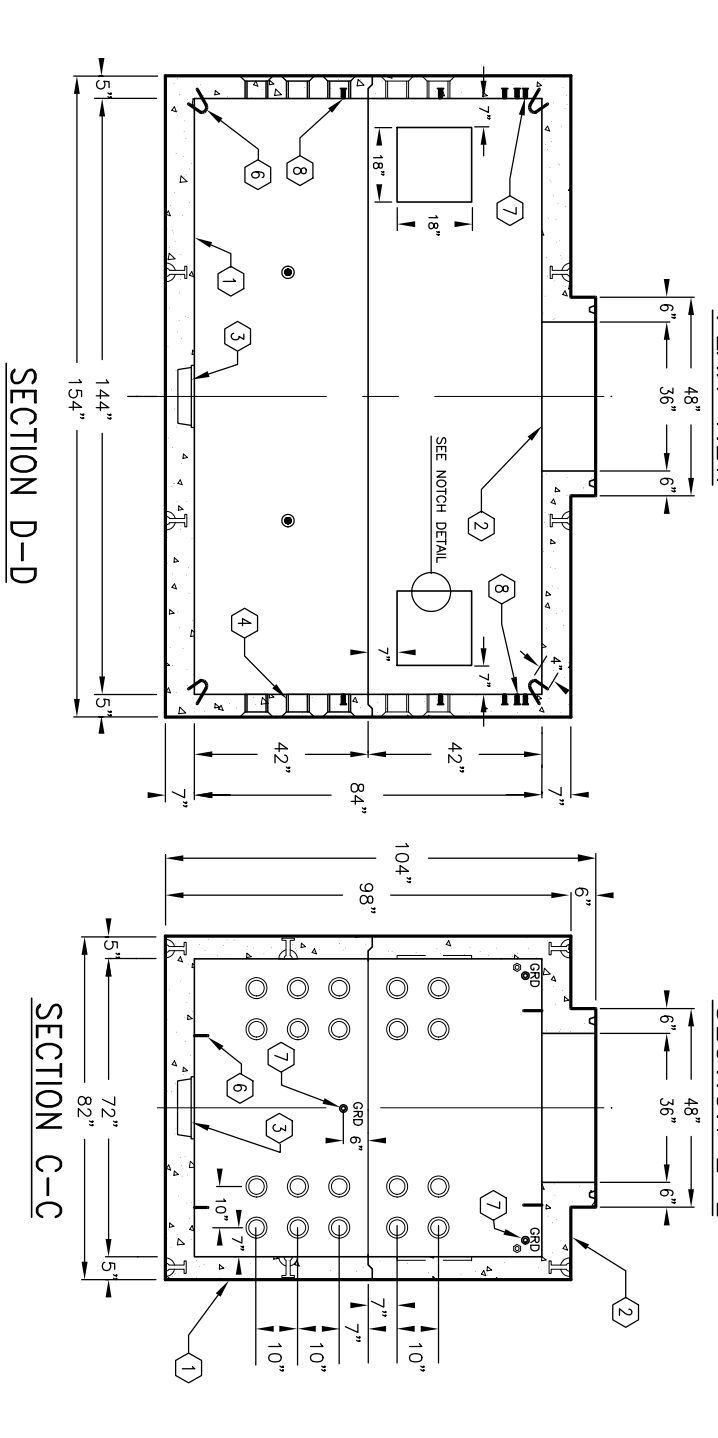
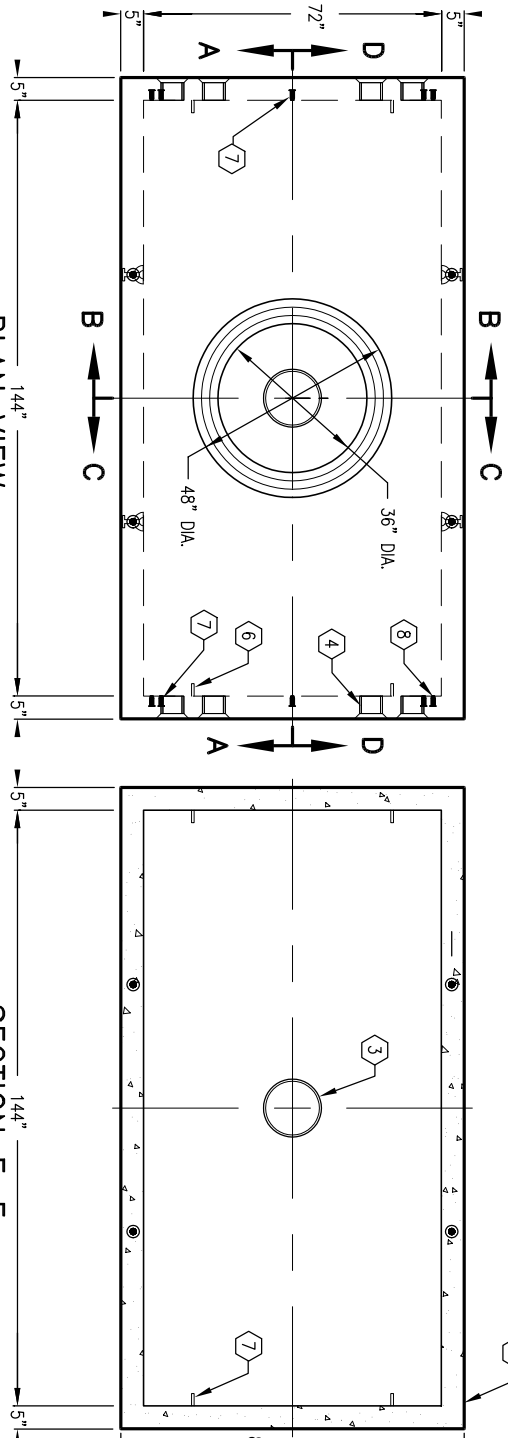
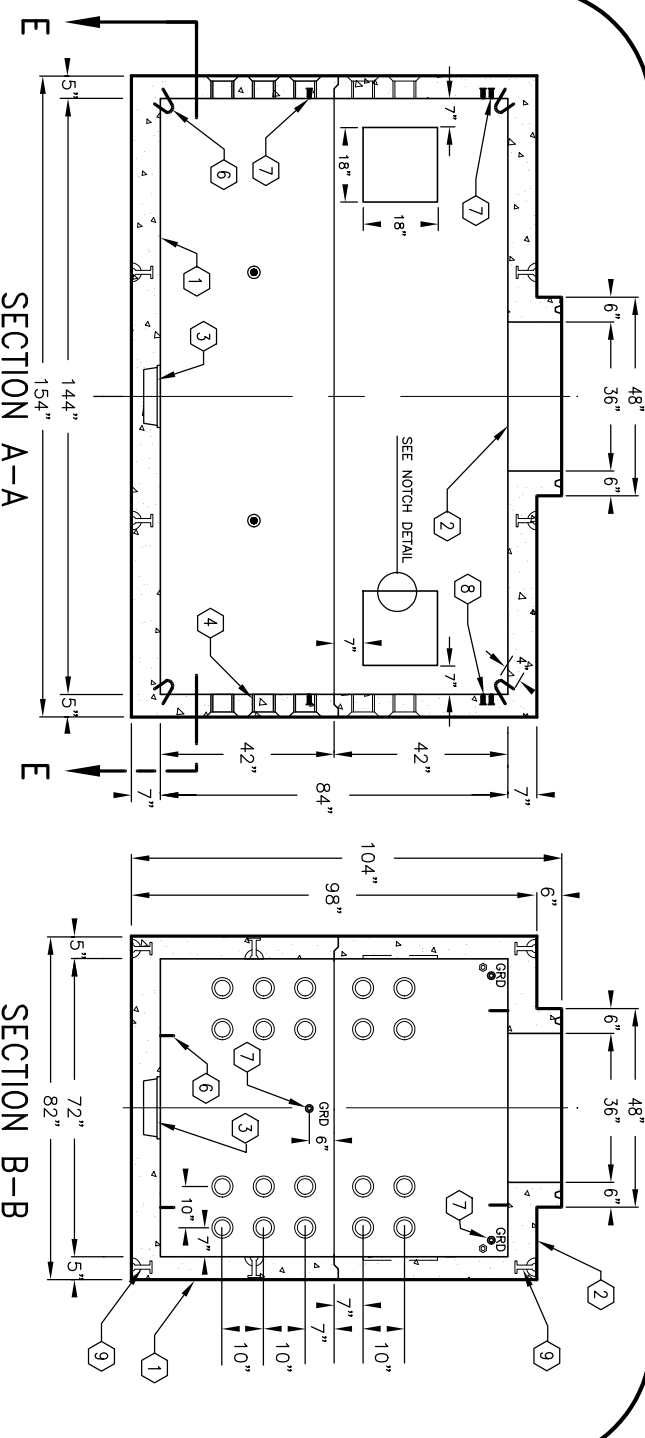
"J" SHAPE NOTCH ON INSIDE WALLS TO OUTLINE UNREINFORCED 18" x 18" PANELS



MINIMUM EXCAVATION SIZE:
 7'-10" X 13'-10" X DEPTH REQ'D

K612-FM84-18

AUTOCAD REL. 14



#	DATE	DESCRIPTION	BY

K612-FM84-18

AUTOCAD REL. 14