

3'-6" DIA. ANAHEIM PARKWAY BURD TRANSFORMER ENCLOSURE X 5'-8" DEEP

NOTES:

■ TRANSFORMER ENCLOSURE DESIGNED FOR H-20-44 BRIDGE LOADING USING 5,500 PSI [37.92MPa] COMPRESSIVE STRENGTH CONCRETE AND 60,000 PSI [413.2MPa] YIELD STRENGTH ASTM A-706 STEEL REINFORCEMENT PER CALCS. #30204.

■ GRATE & ROOF SECTION DESIGNED FOR PARKWAY LOADING OF 300 PSF.

■ TRANSFORMER ENCLOSURE TO BE PLACED ON A 6" BASE OF CRUSHER RUN FOR EVEN LOAD DISTRIBUTION AND EASE OF INSTALLATION

THE FOLLOWING MATERIAL TO BE SHIPPED WITH EACH VAULT:
(a) 7/8" x 1 3/4" CONSEAL GASKET (45 Ft. REQ'D.)

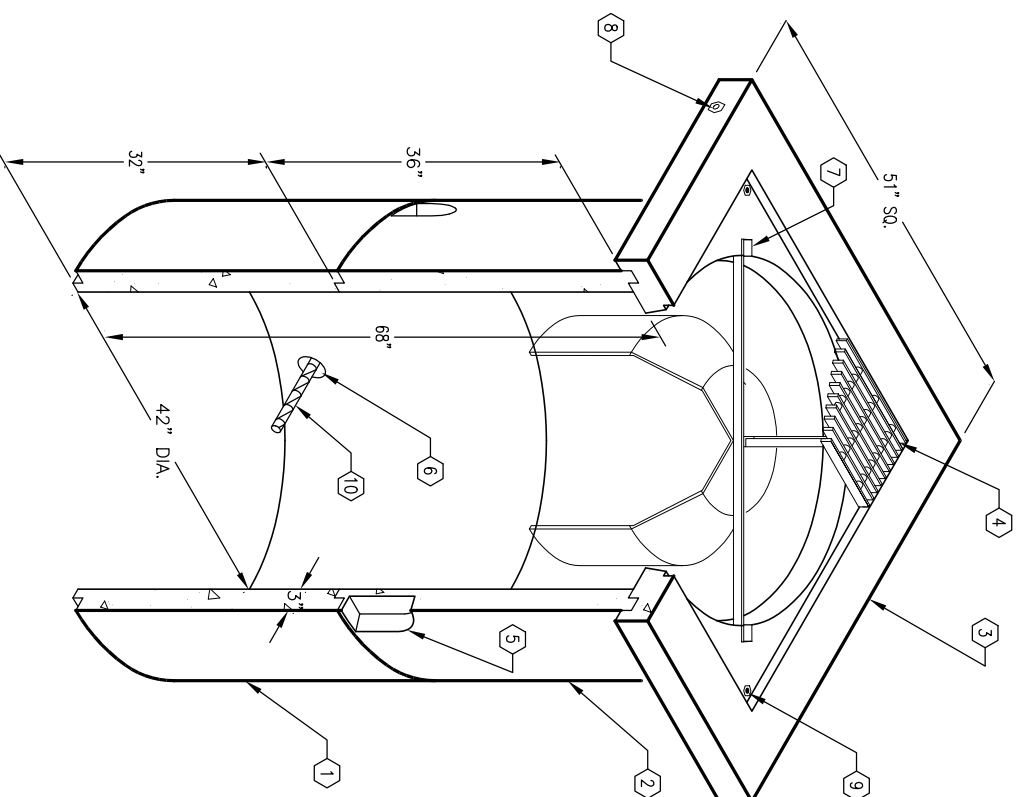
ORDERING INFORMATION:

K42-BTV68-16 FOR ASSEMBLY AS SHOWN.
PER ANAHEIM SPEC. CU 1500-9
TOTAL WEIGHT OF ASSEMBLY AS SHOWN IS 3,070 Lbs.

GENERAL NOTES:

- Minimum soil bearing capacity is hereby assumed to be 2000 PSF unless otherwise documented by a geotechnical report that shall be provided to Jensen Precast by the end user. Jensen Precast shall not be held responsible for the soil bearing capacity.
- Installation of Manholes, Vaults, Handholes, Meter Boxes etc. will be as per Jensen installation procedures.
- Structural modification to the Jensen line of products is not permitted without prior written approval from Jensen Engineering Department.
- Do not scale the drawings, verify all dimensions including rough openings, if any discrepancies are found, notify the Jensen Engineer immediately.
- The Jensen Engineer will interpret the intent of the drawings in case of possible conflict or discrepancy.
- Permissible Variations:
Dimensional Tolerances – The length, width, height, or dia. measurements of the structure when measured on the inside surfaces shall not deviate form design dimensions by more than the following:
Dimensions: Tolerance:
0 to 5 Feet 1/4"
5 to 10 Feet 3/8"
10 to 20 Feet as agreed upon between the supplier and purchaser.
Squareness Tolerance:
The inside of the precast concrete component shall be square as determined by diagonal measurements. The difference between such measurements shall not exceed the following:
Measured Length: Allowable Difference
0 to 10 Feet 1/2"
10 to 20 Feet 3/4"
20 Feet and over as agreed upon between the supplier and purchaser.

- BTV42-132, 32" INTERMEDIATE SECTION WT. 1,103 Lbs.
- BTV42-136-16, 36" INTERMEDIATE SECTION. WT. 1,240 Lbs.
- BTV42-18-16, 6" TOP SLAB. WT. 582 Lbs.
- SG42-50G, PARKWAY GRATE ASSEMBLY W/ (12-30-42) BAFFLE, SKIRT & HANGER, W/(4) 3/8"-13NC x 1 1/2" S.S.P.B. GALVANIZED ASSEMBLY WT. 145 Lbs.
- 5" x 6" KNOCKOUT x 2" DEEP. DRAFT: T=1 3/8", S1=1 3/8", S2=1 3/8", B=0" (6) SHELL MTD. ITEM 2.
- 3" DIA. THROUGH HOLES, ITEM 1 (8) REQ'D.
- 1 1/4" WIDE x 2 1/2" LONG x 1" DEEP GROOVE FOR BAFFLE (4) REQ'D, TABLE MTD. ROOF SECT.
- 1/2" P-36-T INSERT (4) REQ'D. 2 TABLE MTD. 4 RAIL MTD. ROOF SECT.
- 3/8" P-25-T INSERT (4) REQ'D. TABLE MTD., (4) RAIL MTD. TOP SLAB.
- #8 REBAR x 48" GALV. FOR TRANSFORMER SUPPORT (2) ITEM 1
- 4200-E3-1, 3" GRADE RINGS SHALL BE USED TO BRING COVER TO GRADE. (NOT SHOWN)



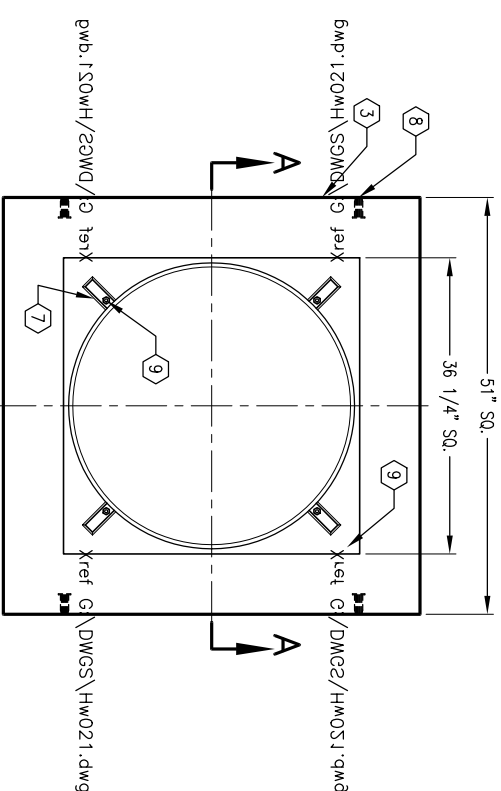
MINIMUM EXCAVATION SIZE:
61" DIA. x DEPTH REQ'D. PLUS
ALLOWANCE FOR ROOF SECTION

K42-BTV68-16

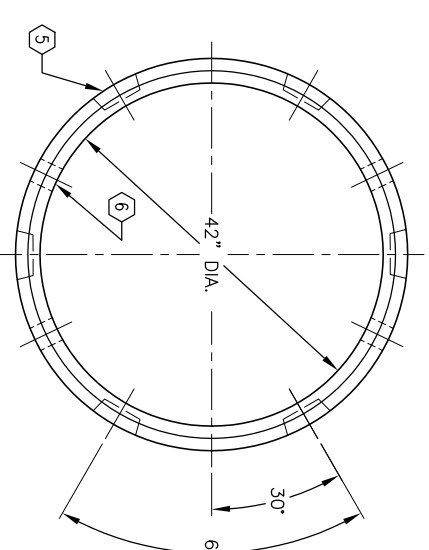
PER ANAHEIM SPEC. CU 1500-9

03-01-02

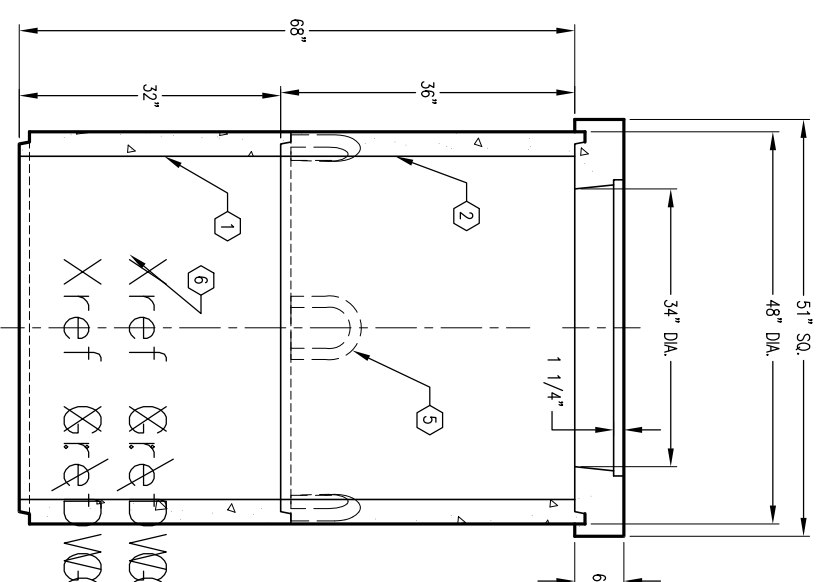
JENSEN
PRECAST



PLAN VIEW OF TOP CAP



PLAN VIEW OF INTERMEDIATE



SECTION A-A

#	DATE	DESCRIPTION	BY

K42-BTV68-16

PER ANAHEIM SPEC. CU 1500-9

03-01-02