

6'-0" x 8'-0" TRANSFORMER PAD W/4'-0" x 7'-0" ENCLOSURE x 42" DEEP

MATERIAL LIST - K686-SB42-11

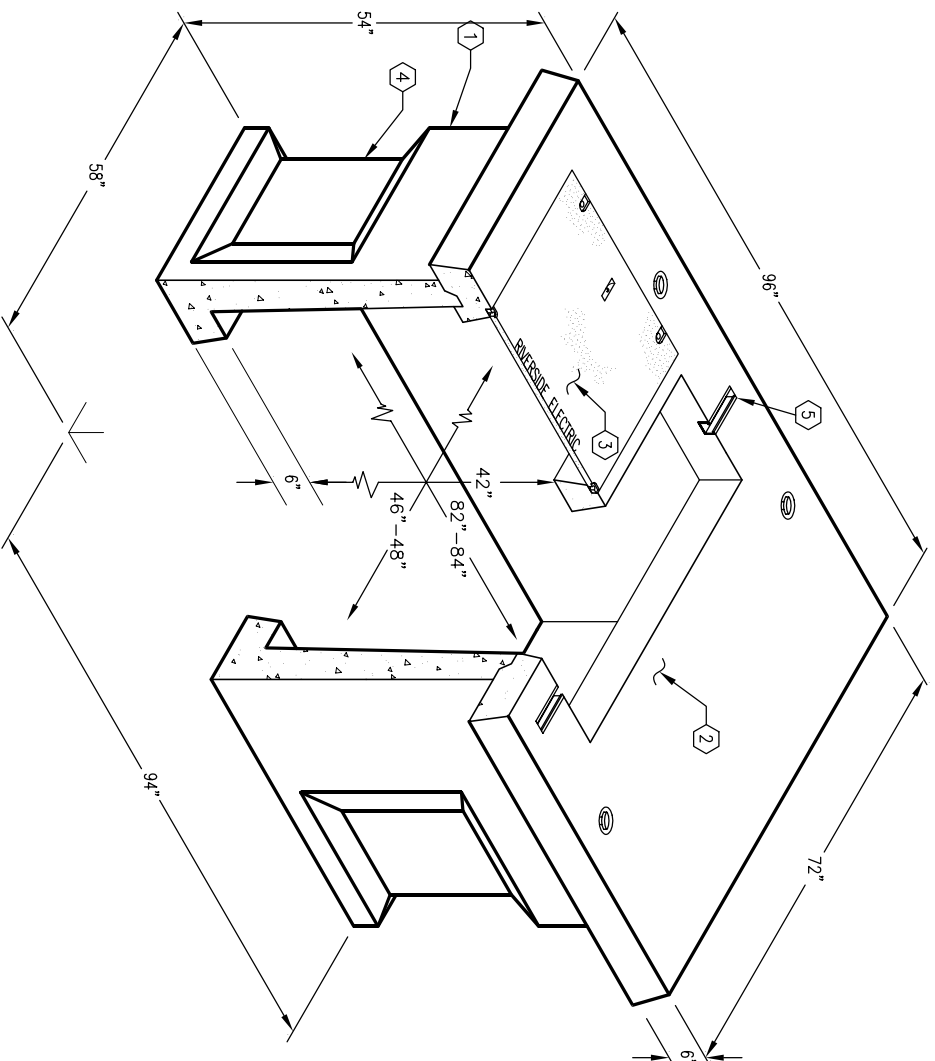
| ITEM | PART NO. | DESCRIPTION | CAGE NO./LOCATE | WEIGHT/MOUNT |
|------|--------------|--|--------------------|--------------|
| 1 | SB47-B42-11 | 42" BOTTOM SECTION | CG-SB47-B42-11(30) | 4,780 lbs |
| 2 | PD7296-T6-16 | 6" TRANSFORMER PAD WITH F3048-PB-BANG CAST-IN | CG-PD7296-T6-16 | 2,713 lbs |
| 3 | 12-20-22 | POLYMER CONCRETE COVER MARK "RIVERSIDE ELECTRIC" | | 109 lbs |
| 4 | KNOCK OUT | (6) 1/2"x2-1/2" S.H.H.S. BOLT w/(2) PICK HOLES | | |
| 5 | 55-21-006 | 20" x 16" CORNER KNOCKOUT x 3-1/2" DEEP DRAFT: T=2", S1=S2=3-1/2", B=0" | | (8) SHELL |
| 6 | 55-10-416 | 6" LONG UNISTRUT | | (2) SURFACE |
| 7 | 55-10-830 | 1/2" P-35-T INSERT WITH CLEAN OUT HOLE | | (6) FRAME |
| 8 | 55-20-203 | 1" GALV. COIL THREAD INSERT | | (4) CORE |
| | | 2 TON x 3-3/8" GALV. FOR RISS HANDLING | | (4) SURFACE |

NOTES:

- TRANSFORMER PAD AND ENCLOSURE ARE DESIGNED FOR PARKWAY LOADING USING 5,500 P.S.I. [37.92 MPa] COMPRESSIVE STRENGTH CONCRETE AND 60,000 P.S.I. [413.2 MPa] YIELD STRENGTH ASTM A-706 STEEL REINFORCEMENT PER CALC. #31655.
- ENCLOSURE TO BE PLACED ON A MIN. 6" BASE OF CRUSHER RUN FOR EVEN LOAD DISTRIBUTION AND EASE OF INSTALLATION.
- PAD AND ENCLOSURE DESIGNED FOR 7,500 LB. (TRANSFORMER) VERTICAL DEAD LOAD.

ORDERING INFORMATION:

K686-SB47-21A FOR ASSEMBLY AS SHOWN,
APPROVED FOR CITY OF RIVERSIDE UGS-721, SB-3
TOTAL WEIGHT OF ASSEMBLY AS SHOWN IS 7,600#.



MINIMUM EXCAVATION SIZE:
5'-6" x 8'-6" x DEPTH REQ'D.

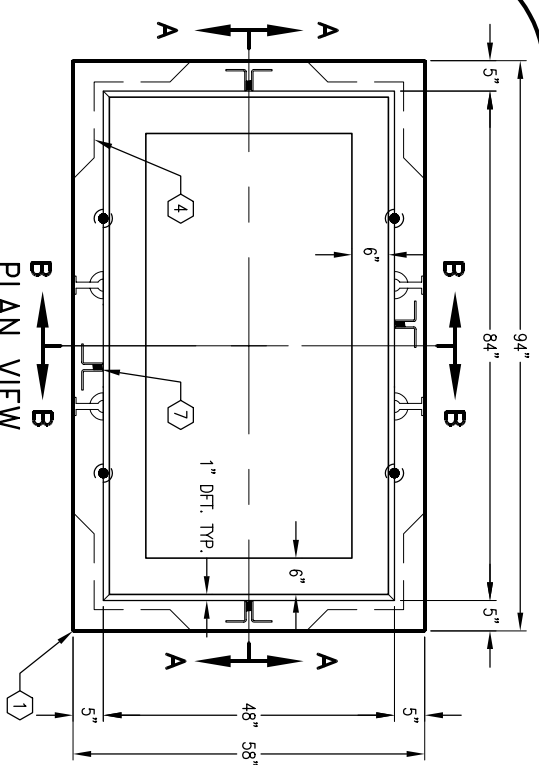


AUTOCAD REL. 14

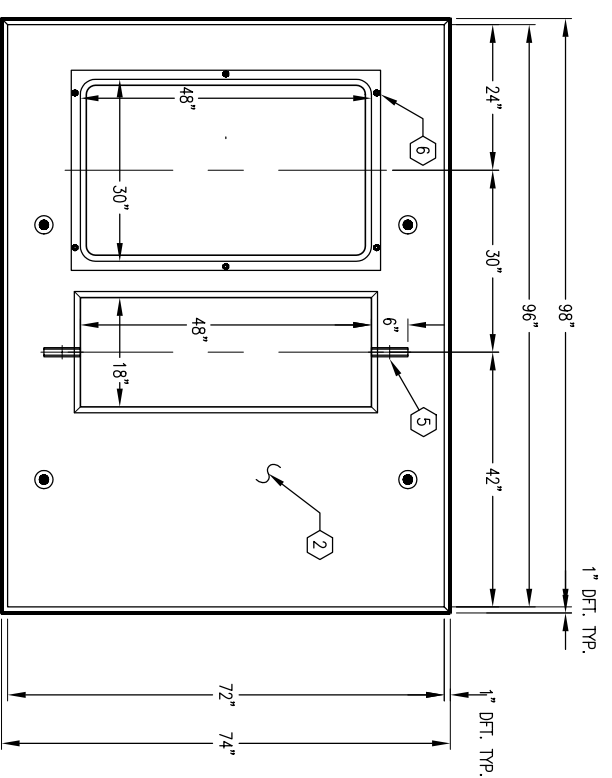
K68-SB42-21A

PER RIVERSIDE SPEC. UGS-721, SB-3

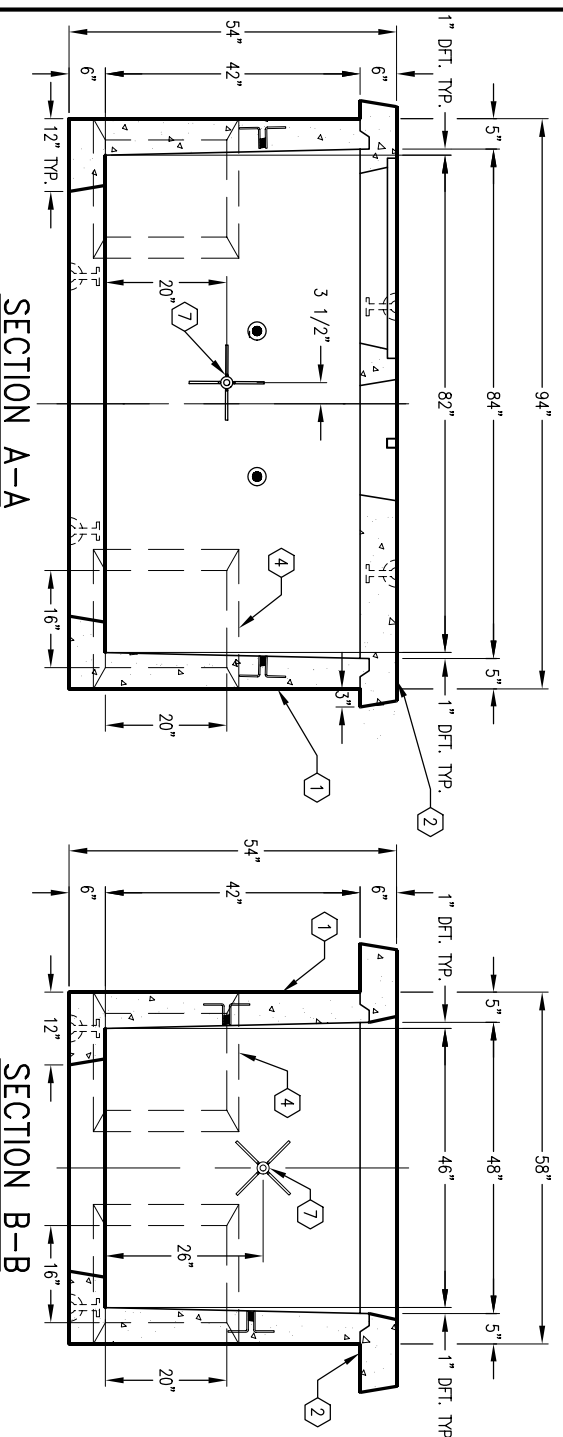
04-06-04



W/O TRANSFORMER PAD



PLAN VIEW OF TRANSFORMER PAD



SECTION A-A

SECTION B-B



| # | DATE | DESCRIPTION | BY |
|---|----------|-----------------------------|-----|
| C | 10-26-04 | ADDED UNISTRUT | YK |
| B | 06-14-04 | REVERSE PER LATEST STANDARD | DNG |

K68-SB42-21A

PER RIVERSIDE SPEC. UGS-721, SB-3

04-06-04