

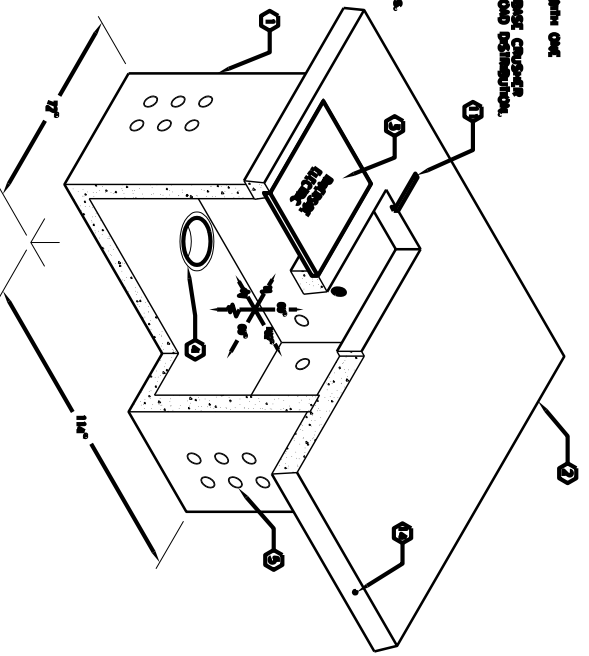
10'-0" x 12'-0" TRANSFORMER PAD W/5'-0" x 8'-6" ENCLOSURE x 60" DEEP

MATERIAL LIST-K586-SB60-21			CAGE NO./LOCATE	WEIGHT IN OUNZ
ITEM PART NO.	DESCRIPTION			
1 SB888-B01-11	8" BOTTOM SECTION	CG-SB888-B01-11(2)	15,400 lbs	
2 PDI2014-18-1	8" THICK TOP SLAB	CG-PDI2014-18-1(2)	12,000 lbs	
3 E308B-PE-ANG	CAST-IN GALVANIZED ANGLE FRAME			
4 12-0-22	3048 RHM COVER MARKED FRIGERIDE ELECTRIC		109 lbs	
5 2010-119	(8) 1/2" x 2-1/2" F.H. 8 BOLTS w/CAPRIE WASHER (2) LIFT EYES			
6 5530-52	13" x 14" DIA. SLUMP x 3" DEEP			
7 5530-52	5" CONCRETE			
8 5530-52	708" DIA. x 8" GALV. PULL IRON			
9 5510-24	1/2" PLASTIC INSERT			
10 5510-16	1/2" P-38-T INSERT w/1/2" FAN OUT HOLE			
11 5521-014	1.568" x 1.928" GALV UNIBOLT x 1.1" LONG			
12 2231-01	TIDIA. SCH. 40 PRG. CONDUIT CAPPED AT OUTSIDE WALL			
13 5535-03	708" x 3208" GALV. PULL IRON			
14 5510-590	1 1/2" x 1/2" GALVANIZED COIL THREADED INSERT			

NOTES:
 1. ORDER FOR 14-20-24 BARRIC LIGHTING USING 5,500 PSI CONCRETE AND 6000 PSI. (CONCRETE) REFER TO SPEC. FOR CALC. / NOTES.
 2. CONCR ORDERED FOR NUMBER LONDON.

3. ALL INTERIOR SURFACES SHALL BE PAINTED WITH ONE COAT OF FLAT WHITE GENT PAINT.
 4. SPECIAL ENCLOSURE TO BE PLACED IN A 6" BARR. CHANGERS HIGH FOR USE IN MAINTENANCE AND LIGHT LOAD DISTRIBUTION.

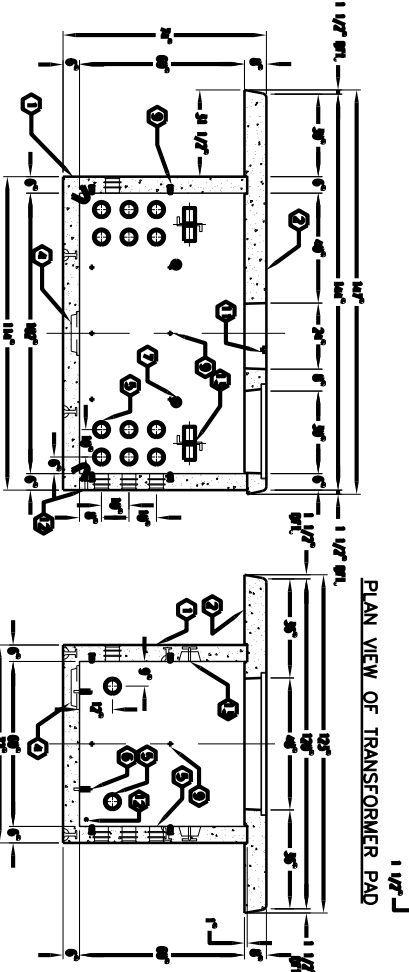
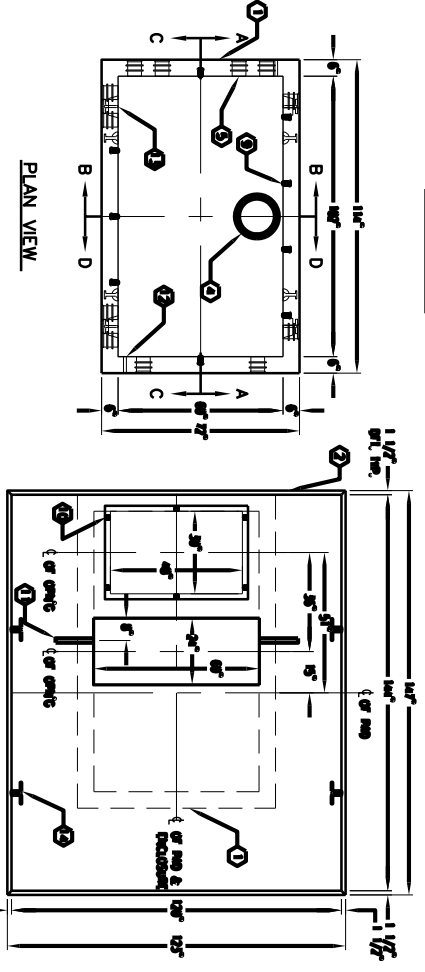
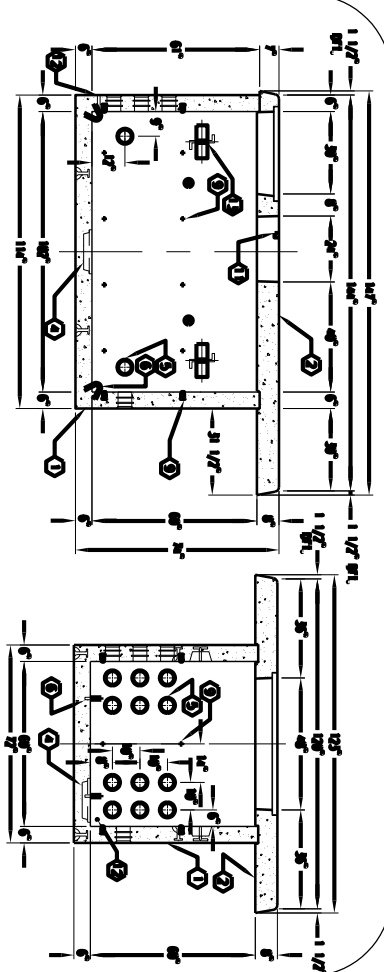
CONCRETE REINFORCEMENT:
 14-20-24 FOR ASSEMBLY AS SHOWN. APPROVED FOR CITY OF MADISON. REVIEW FOR ASSEMBLY AS SHOWN 2/23/20 PER. MUSIC STRAHLER TO BE ADDED TO JOINTS.



MINIMUM FOUNDATION SIZE
 7'-0" x 11'-0" x 18" MIN. RECON.



K586-SB60-21
 PER CITY OF MADISON
 05-23-02



SECTION C-C
 SECTION D-D
 K586-SB60-21
 PER CITY OF MADISON
 05-23-02