

# 8'-0" x 9'-4" PASADENA TUNNEL VAULT x VARIABLE LENGTH 14', 18', 22', 30', 36', 48'

**NOTES:**

VAULT DESIGNED IN ACCORDANCE WITH ASHTO H-20-44 TRAFFIC BRIDGE LOADING USING 5,500 PSI COMPRESSIVE STRENGTH CONCRETE AND 60,000 PSI YIELD STRENGTH ASTM A-706 STEEL REINFORCEMENT PER CALCS. #50344.

VAULT TO BE PLACED ON A MIN. 6" BASE OF CRUSHER RUN FOR EASE OF INSTALLATION AND EVEN LOAD DISTRIBUTION.

ALL WALLS AND CEILINGS SHALL BE PAINTED WHITE.

**ORDERING INFORMATION:**

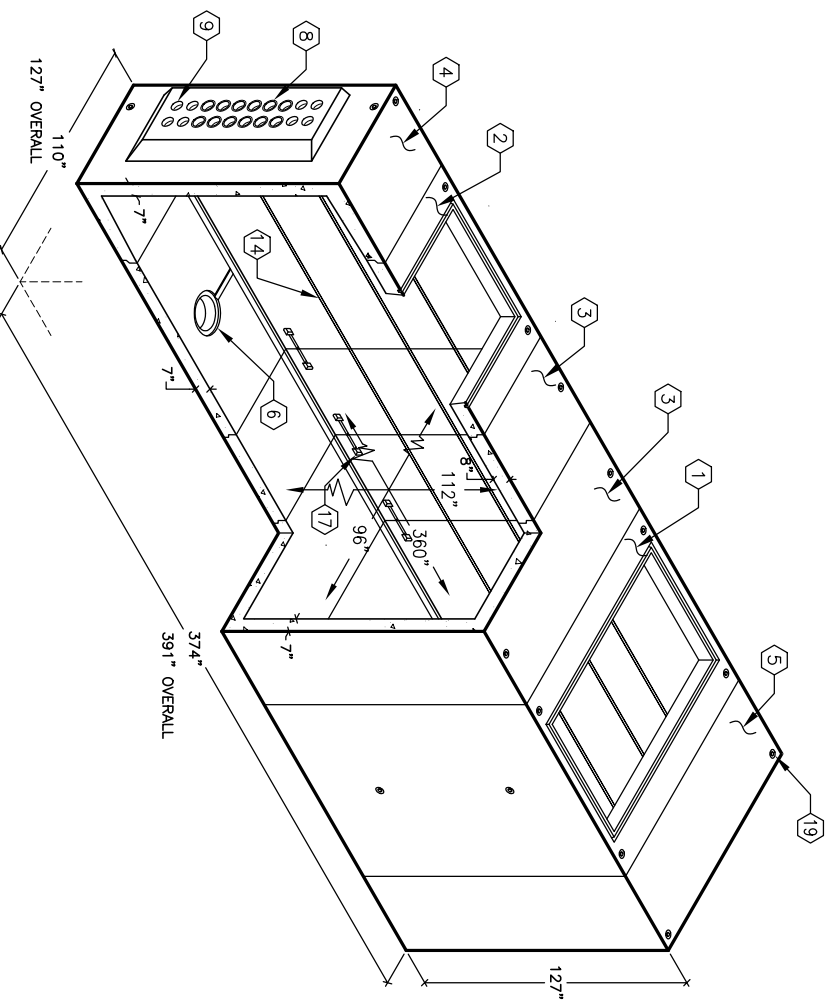
- K894-TV14-20258, 14' ASSEMBLY W/ 2 (2) DUCT ENDS.
- K894-TV14-20458, 14' ASSEMBLY W/ 2 (4) DUCT ENDS.
- K894-TV14-2058, 14' ASSEMBLY W/ 1 (2) DUCT END & 1 (4) DUCT END.
- K894-TV18-20458, 18' ASSEMBLY W/ 2 (2) DUCT ENDS.
- K894-TV22-20258, 22' ASSEMBLY W/ 2 (2) DUCT ENDS.
- K894-TV22-20458, 22' ASSEMBLY W/ 2 (4) DUCT ENDS.
- K894-TV22-20458-2, 22' ASSEMBLY W/ 2 (4) DUCT ENDS & 2 OPENINGS.
- K894-TV22-20458-2, 22' ASSEMBLY W/ 2 (4) DUCT ENDS & 2 OPENINGS.
- K894-TV22-20258-2, 22' ASSEMBLY W/ 1 (2) DUCT END & 1 (4) DUCT END & 2 OPENINGS.
- K894-TV30-20258-2, 30' ASSEMBLY W/ 2 (4) DUCT ENDS & 2 OPENINGS.
- K894-TV30-20458-2, 30' ASSEMBLY W/ 2 (4) DUCT ENDS & 2 OPENINGS.
- K894-TV30-2058-2, 30' ASSEMBLY W/ 1 (2) DUCT END & 1 (4) DUCT END & 2 OPENINGS.
- K894-TV36-20458-2, 36' ASSEMBLY W/ 2 (4) DUCT ENDS & 2 OPENINGS.
- K894-TV48-20458-2, 48' ASSEMBLY W/ 2 (4) DUCT ENDS & 2 OPENINGS.

**TOTAL ASSEMBLY WEIGHTS:**

- 14' ASSEMBLY IS 59,438#
- 18' ASSEMBLY IS 86,158#
- 22' ASSEMBLY IS 86,158#
- 30' ASSEMBLY W/ 2 OPENINGS IS 83,876#
- 30' ASSEMBLY IS 130,598#
- 36' ASSEMBLY IS 130,598#
- 48' ASSEMBLY IS 144,159#

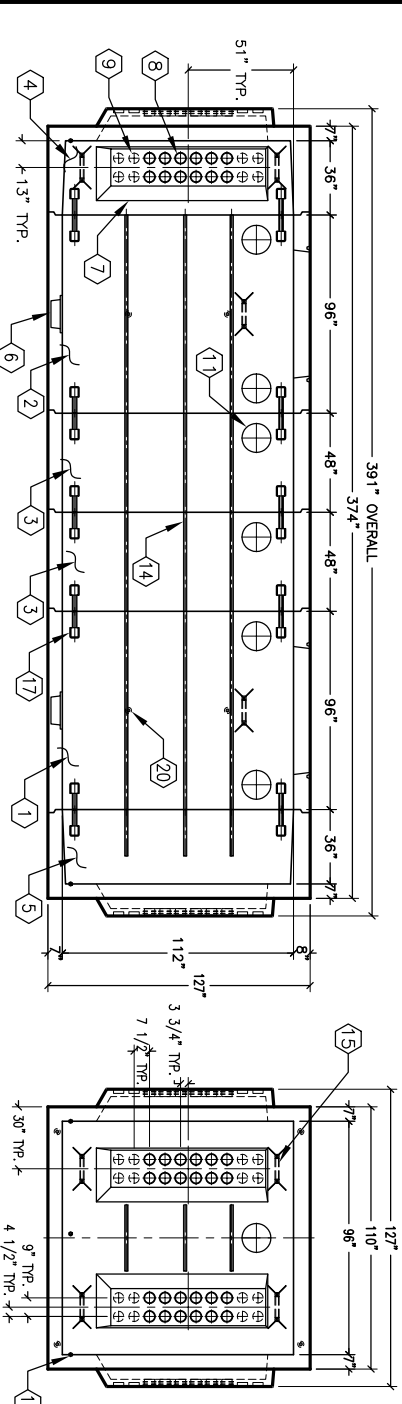
**EXCAVATION SIZES:**

- 14' ASSEMBLY IS 12'-6" x 18'-6" x DEPTH REQ'D.
- 18' ASSEMBLY IS 12'-6" x 22'-6" x DEPTH REQ'D.
- 22' ASSEMBLY IS 12'-6" x 26'-6" x DEPTH REQ'D.
- 30' ASSEMBLY IS 12'-6" x 34'-6" x DEPTH REQ'D.
- 36' ASSEMBLY IS 12'-6" x 40'-6" x DEPTH REQ'D.
- 48' ASSEMBLY IS 12'-6" x 52'-6" x DEPTH REQ'D.

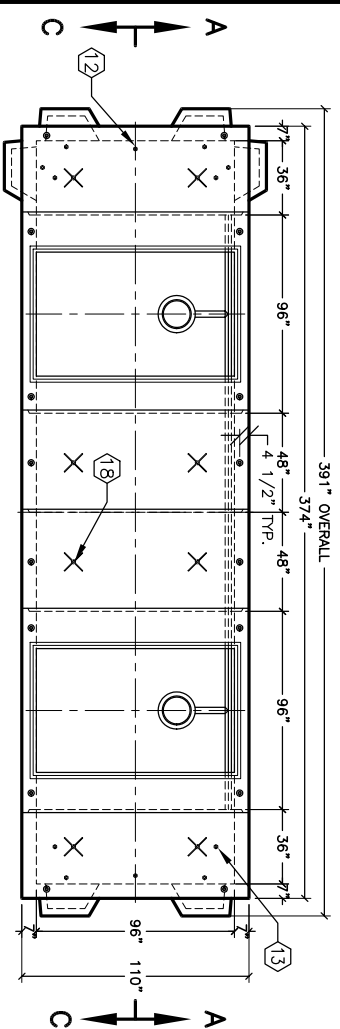


1. TV894-C96-2058, 96" CENTER SECTION, WT. 24,438#.
2. TV894-R96-20, 96" EXTENSION SECTION W/OOPENING, WT. 24,438#.
3. TV894-R48-20, 48" EXTENSION SECTION, WT. 13,360#.
4. TV894-E36-204, 36" END SECTION W/4 DUCTS, WT. 17,500#.
5. TV894-E36-202, 36" END SECTION W/2 DUCTS, WT. 17,500#.
6. 13" x 14" DIA. SUMP x 5 1/2" DEEP W/COVER.
7. 96" GEN. SECTION (1) CORE MTD.; 96" END SECTION (1) CORE MTD.
8. 18" x 7 1/2" DEEP DUCT K.O. x 12" DEEP. B=7". END-204 (4) CORE MTD.
9. 5" DIA. K.O. (12) CORE MTD. TO EA. DUCT K.O.s (ITEM 7).
10. 5" DIA. K.O.s (2) DEEP. (8) REQ'D MTD. TO EA. DUCT K.O.s (ITEM 7).
11. 2" x 2 1/2" DIA. K.O. x 2" DEEP. (1) REQ'D. MTD TO EA. K.O.s (ITEM 7).
12. 14" DIA. VENT K.O. x 6" DEEP. 96" GEN. SECTION (4) CORE MTD.; 96" EXT. SECTION (4) CORE MTD.; 72" EXT. SECTION (4) CORE MTD.; 48" EXT. SECTION (2) CORE MTD. END SECTION (1) CORE MTD.
13. 5/8" COPPER CLAD GROUND ROD x 12" LONG, END SECTION (1) CORE MTD.
14. 1" DIA. BLIND GROUND ROD HOLE, END SECTION (3) EA. CORE MTD.
15. 1 5/8" x 1 5/8" GALV. UNSTRUT. 96" GEN. & END SECTION (6) 95 3/4" LONG CORE MTD.; 72" EXT. SECTION (6) 71 3/4" CORE MTD.; 48" EXT. SECTION (6) 46" CORE MTD.; END-204 (3) 32" LONG CORE MTD.; END-202 (3) 32" LONG CORE MTD.
16. 96" EXT. SECTION (1) CORE MTD.; 96" GEN. SECTION (1) CORE MTD.; 72" EXT. SECTION (1) CORE MTD.; END-204 SECTION (8) CORE MTD.; END-202 SECTION (4) CORE MTD.
17. 96" EXT. SECTION (1) CORE MTD.; 96" GEN. & EXT. SECTION (8) CORE MTD.; 72" EXT. SECTION (4) EA. CORE MTD.; 48" EXT. SECTION (8) CORE MTD.; END SECTION (4) EA. CORE MTD.; 48" EXT. SECTION (2) CORE MTD.; END SECTION (2) EA. CORE MTD.

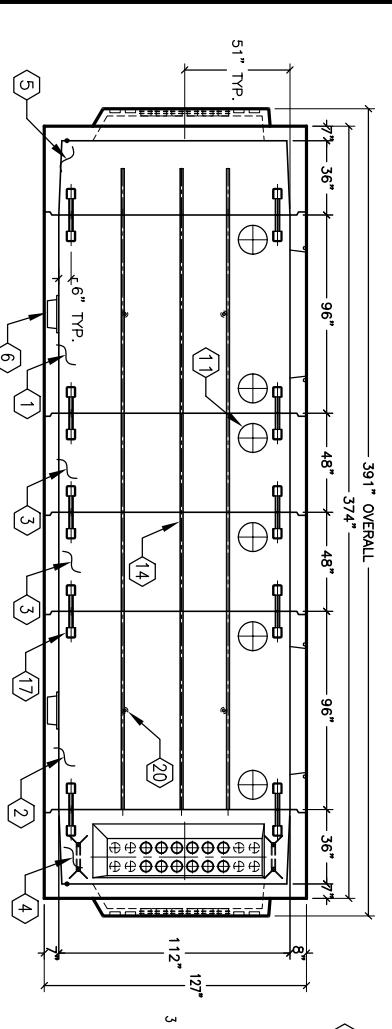
PART NUMBER	TUNNEL LENGTH											
	14'-0" 20	14'-0" 40	14'-0" 20-40	18'-0" 40	22'-0" 20	22'-0" 20	22'-0" 40	22'-0" 20PN	22'-0" 40	22'-0" 20PN	30'-0" 20	30'-0" 20PN
TV894-C96-2058	*	*	*	*	*	*	*	*	*	*	*	*
TV894-R96-20						*	*	*	*	*	*	*
TV894-R72-20									*	*	*	*
TV894-R48-20									*	*	*	*
TV894-E36-204									*	*	*	*
TV894-E36-202	**	**	*	*	**	**	**	**	*	*	*	*



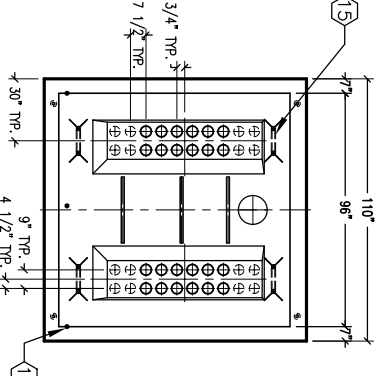
**SECTION A-A**



**SECTION B-B**



**SECTION C-C**



**SECTION D-D**



AUTOCAD REL. 14

**K894-TV-20**

PER PASADENA SPEC.

03-01-02



#	DATE	DESCRIPTION	BY

**K894-TV-20**

PER PASADENA SPEC.

03-01-02