

4'-0" x 7'-0" PASADENA PARKWAY TRANSFORMER ENCLOSURE x 84" DEEP

NOTES:

VAULT DESIGNED IN ACCORDANCE WITH AASHTO H-20-44 TRAFFIC BRIDGE LOADING USING 5,500 PSI [37.92 MPa] COMPRESSIVE STRENGTH CONCRETE AND 60,000 PSI [413.2 MPa] YIELD STRENGTH ASTM A-706 STEEL REINFORCEMENT PER CALC. #

COVER DESIGN FOR PARKING LOADING @ 300 P.S.F. PER CALC. #

VAULT TO BE PLACED ON A MIN. 6" BASE OF CRUSHER RUN FOR EASE OF INSTALLATION AND EVEN LOAD DISTRIBUTION.

THE FOLLOWING MATERIAL TO BE SHIPPED WITH EACH VAULT:

(a) 7/8" x 1 3/4" CONSEAL GASKET (45 FT. REQ'D.)

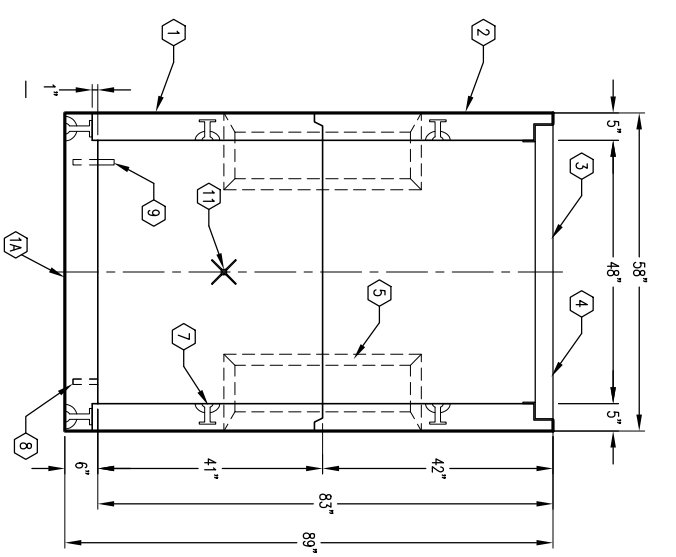
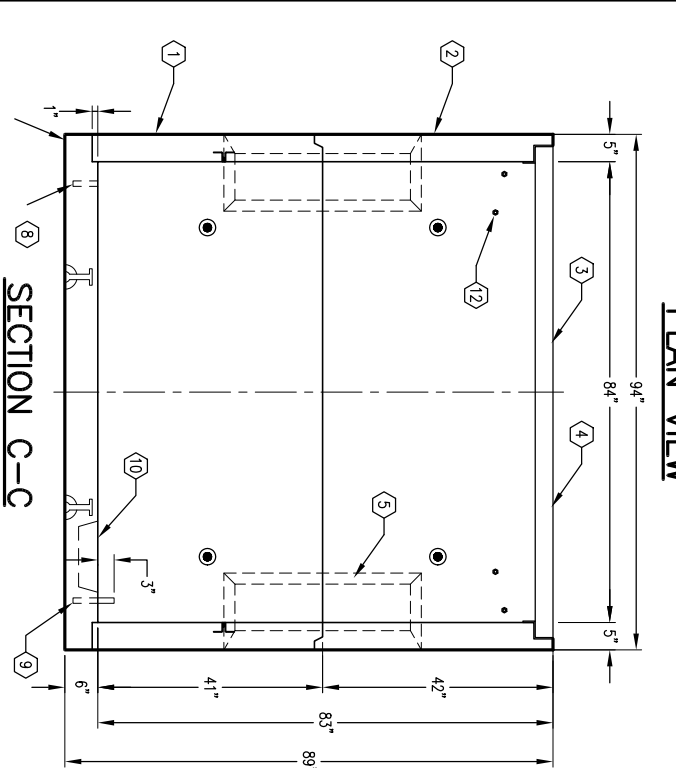
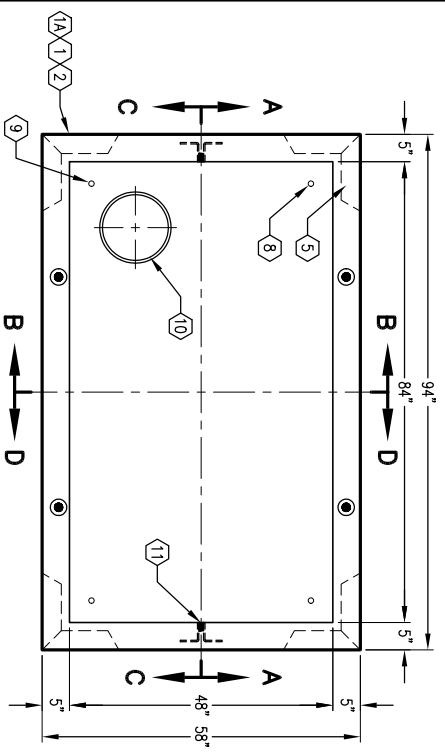
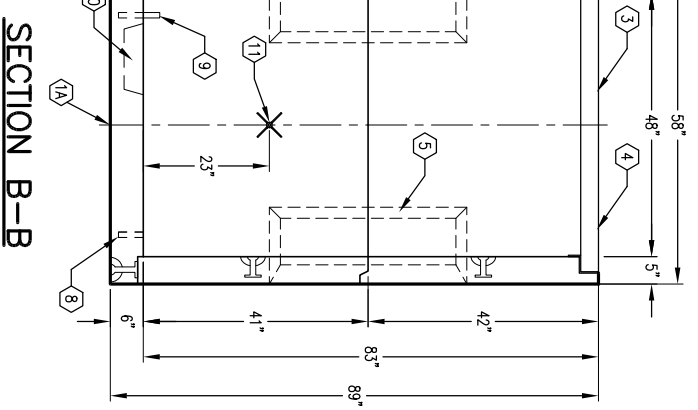
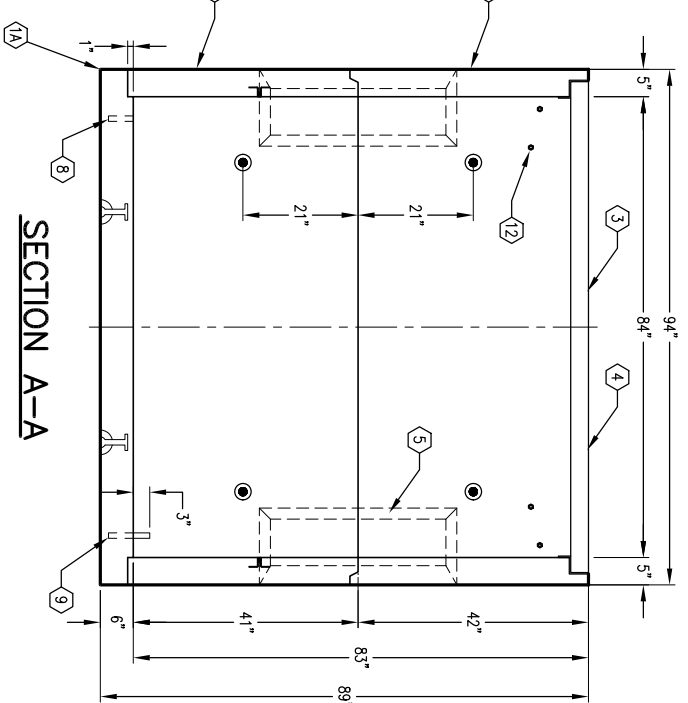
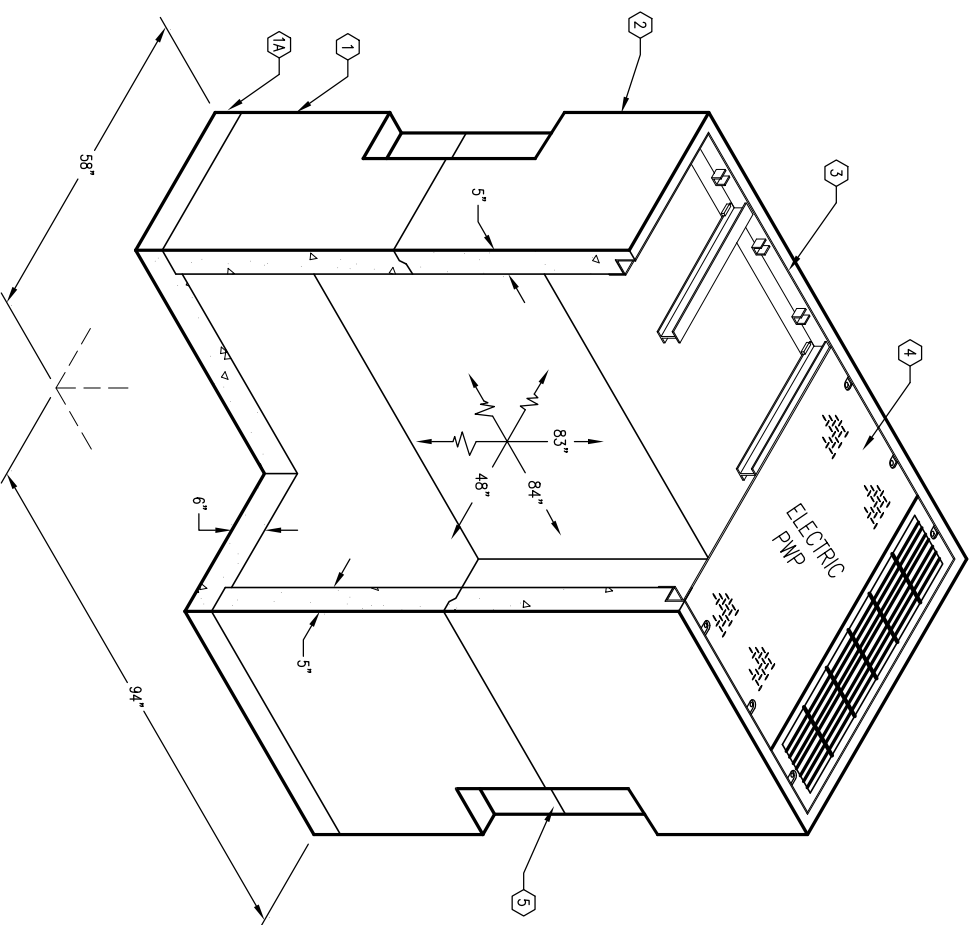
ORDERING INFORMATION:

K47-TE83-20 FOR ASSEMBLY AS SHOWN.
APPROVED FOR PASADENA SPECS.
TOTAL ASSEMBLY WT. 13,627 Lbs.

GENERAL NOTES:

- Minimum soil bearing capacity is hereby assumed to be 2000 PSF unless otherwise documented by a geotechnical report that shall be provided to Jensen Precast by the end user. Jensen Precast shall not be held responsible for the soil bearing capacity. Installation of Manholes, Vaults, Handholes, Meter Boxes etc. will be as per Jensen installation procedures.
- Structural modification to the design line of products is not permitted without prior written approval from Jensen Engineering Department. Do not scale the drawings, verify all dimensions including rough openings, if any discrepancies are found, notify the Jensen Engineer immediately.
- The Jensen Engineer will interpret the intent of the drawings in case of possible conflict or discrepancy.
- Permissible Tolerances - The length, width, height, or dia. measurements of the structure when measured on the inside surfaces shall not deviate from design dimensions by more than the following: Tolerances: Dimensions: 1/4" 0 to 5 Feet 1/8" 5 to 10 Feet 3/8" 10 to 20 Feet as agreed upon between the supplier and purchaser. Squariness Tolerance: The inside of the precast concrete component shall be square as determined by diagonal measurements. The difference between such measurements shall not exceed the following: Measured Length: Allowable Difference 0 to 10 Feet 1/2" 10 to 20 Feet 3/4" 20 Feet and over as agreed upon between the supplier and purchaser.

- SE47-B-20, 6" BASE SLAB, WT. 2,840 Lbs.
- SE47-IR42-20, 42" INTER. SECTION, WT. 5,100 Lbs.
- SE47-TR42-20, 42" TOP RING SECTION, WT. 4,775 Lbs.
- F47-PB-PAS, FRAME CAST-IN GALV. WT. 177 Lbs.
- CA47-PG-20, 2 PIECE PARKWAY COVER (SC47-GV-22) W/ (3) BEAMS (SCB47-20P), END GRATES, AND BAFFLES, WT. 650 Lbs.
- 8-1/2" x 8-1/2" x 32" x 3 1/2" DEEP CORNER K.O. DRAFT: 2" ALL SIDES, SHELL MTD.
- 1" DIA. BLIND GROUND ROD HOLE. BOTTOM SECT. (2) REQ'D. CORE MTD.
- 5/8" COPPER CLAD STEEL GROUND ROD ATTACHED TO REBAR x 6" LONG 3" PROJECTION BOTTOM SECT. (2) REQ'D. CORE MTD.
- 13" x 14" DIA. SUMP x 4 1/2" DEEP (5000-393). W/ GRATED COVER PLATE
- X 1" COIL THRD. INSERTS BOTTOM SECTION (2) CORE MTD.
- 3/8" P-25-T INSERT. TOP RING SECTION (8) CORE MTD.



JENSEN
PRECAST

AUTOCAD REL. 14

K47-TE83-20

PER PASADENA SPECS. #P-1-1326

03-01-02

JENSEN
PRECAST

#	DATE	DESCRIPTION	BY

K47-TE83-20

PER PASADENA SPECS. #P-1-1326

03-01-02