

# 3'-0" x 5'-0" PASADENA DUCTED PULL BOX x 48" DEEP

**NOTES:**

- PULL BOX DESIGNED IN ACCORDANCE WITH AASHTO H-20-44 TRAFFIC BRIDGE LOADING USING 5,500 PSI COMPRESSIVE STRENGTH CONCRETE AND 60,000 PSI YIELD STRENGTH ASTM A-706 STEEL REINFORCEMENT.
- PULL BOX TO BE PLACED ON A MIN. 6" BASE OF CRUSHER RUN FOR EASE OF INSTALLATION AND EVEN LOAD DISTRIBUTION.
- STEEL COVER DESIGN FOR PARKWAY 300 PSF LOADING OR TRAFFIC H-20 LOADING.

**RACKING PACKAGE:**

18 HOLE CABLE RACKS W/BOLTS = 4.

**ORDERING INFORMATION:**

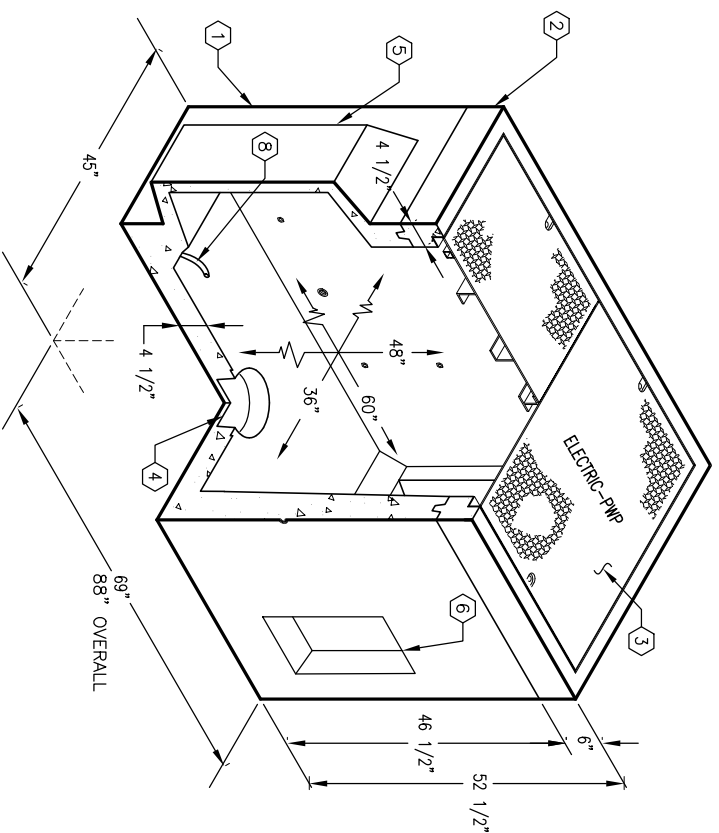
APPROVED FOR CITY OF PASADENA SPEC. #8-L-1322  
TOTAL WEIGHT OF ASSEMBLY SHOWN IS 5,585 Lbs.

**PARKWAY ASSEMBLY WITH STEEL B/D COVER K3660-DP48-20P.**  
**LIGHT TRAFFIC ASSEMBLY WITH STEEL B/D COVER K3660-DP48-20L.**

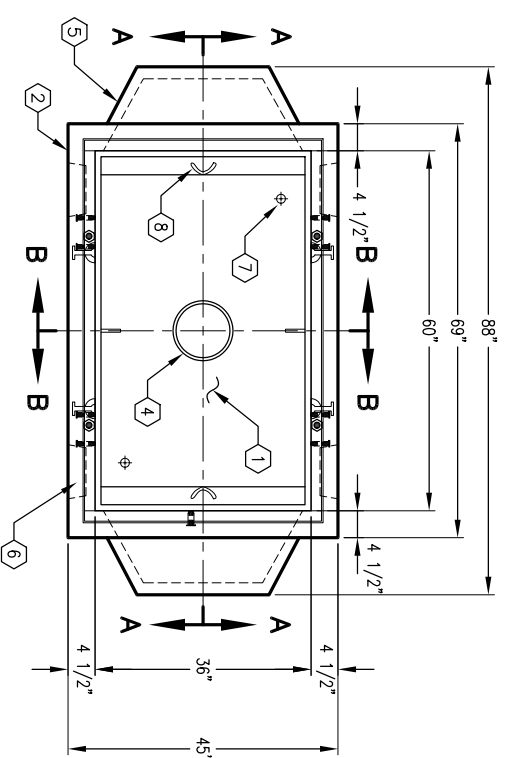
1. PB3660D-B42-05, 42" BOTTOM SECTION, WT. 4,870 Lbs. PB3660-16F, 6" TOP SECTION, W/CAST-IN ANGLE FRAME. (F3660-PB-ANG) W/GALV. FINISH, WT. 527 Lbs.
2. SC3660-PRD, TWO PIECE PARKWAY COVER, PAINTED RED, MARKED "ELECTRIC-PWP".
- 3B. SC3660-TRD, TWO PIECE TRAFFIC COVER, PAINTED RED, MARKED "ELECTRIC-PWP".
4. 6" DIA. SUMP x 3 1/2" DEEP BOTTOM SECTION (1).
5. 26" x 26 1/2" DUCTED K.O. x 12" DEEP, BOTTOM SECTION (2).
6. 8" x 16" K.O. x 3" DEEP, BOTTOM SECTION (4).
7. 1" DIA. BLIND GROUND ROD HOLE, BOTTOM SECTION (2)
8. 7/8" x 4 1/2" GALV. PULL IRON, BOTTOM SECTION (2) @ 1/2" DIA. PLASTIC INSERT, BOTTOM SECTION (20).
10. (B) 1/2" P-35-T INSERT W/CLEAN-OUT HOLE, TOP SECTION (8) FRAME MTD.

**GENERAL NOTES:**

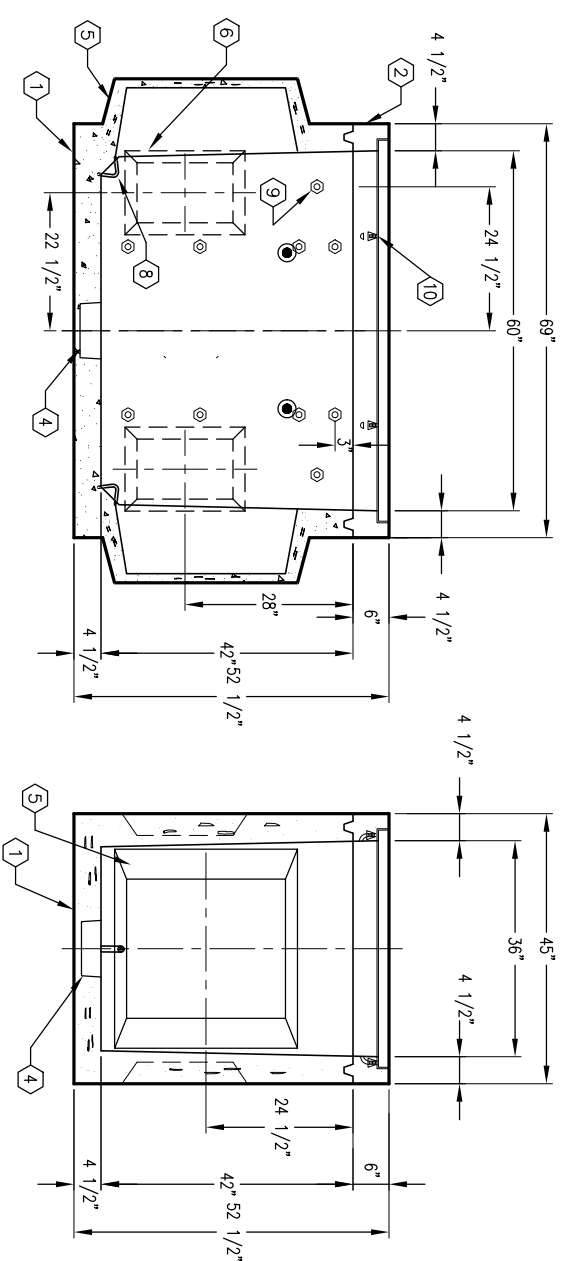
1. Minimum soil bearing capacity is hereby assumed to be 2000 PSF unless otherwise documented by a geotechnical report that shall be provided to Jensen Precast by the end user. Jensen Precast shall not be held responsible for the soil bearing capacity. Installation of Manholes, Vaults, Handholes, Meter Boxes etc. will be as per Jensen Installation procedures.
2. Structural modification to the Jensen line of products is not permitted without prior written approval from Jensen Engineering Department. Do not scale the drawings, verify all dimensions including rough openings, if any discrepancies are found, notify the Jensen Engineer immediately.
3. The Jensen Engineer will interpret the intent of the drawings in case of possible conflict or discrepancy.
4. Permissible Variations: Dimensional Tolerances – The length, width, height, or dia. measurements of the structure when measured on the inside surfaces shall not deviate from design dimensions by more than the following:  
Dimensions: Tolerance:  
0 to 5 Feet 1/4"  
5 to 10 Feet 3/8"  
10 to 20 Feet as agreed upon between the supplier and purchaser.
5. Squariness Tolerance: The inside of the precast concrete component shall be square as determined by diagonal measurements. The difference between such measurements shall not exceed the following:  
Measured Length: Allowable Difference  
0 to 10 Feet 1/2"  
10 to 20 Feet 3/4"  
20 Feet and over as agreed upon between the supplier and purchaser.
- 7.



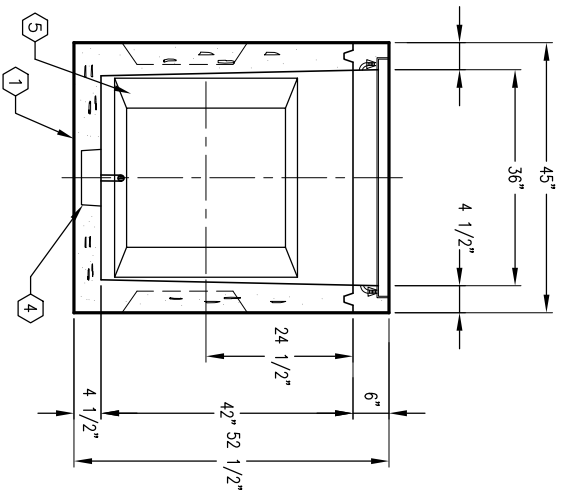
MINIMUM EXCAVATION SIZE:  
4'-9" x 8'-4" x DEPTH RECD.



**PLAN VIEW**



**SECTION A-A**



**SECTION B-B**

**JENSEN**  
PRECAST

AUTOCAD REL. 14

**K3660-DP48-20**

PER CITY OF PASADENA SPEC. #8-L-1322

03-01-02

**JENSEN**  
PRECAST

#	DATE	DESCRIPTION	BY

**K3660-DP48-20**

PER CITY OF PASADENA SPEC. #8-L-1322

03-01-02