

2'-6" x 4'-0" GLENDALE DUCTED PULL BOX x 4'-0" DEEP

NOTES:

- PULL BOX DESIGNED IN ACCORDANCE WITH ASHTO H-20-44 TRAFFIC BRIDGE LOADING USING 5,500 P.S.I. [37,24MPa] COMPRESSIVE STRENGTH CONCRETE AND 60,000 P.S.I. [413,2MPa] YIELD STRENGTH ASTM A-706 STEEL REINFORING PER CALC. #91693.
- PULL BOX TO BE PLACED ON A MIN. 6" BASE OF CRUSHER RUN FOR EASE OF INSTALLATION AND EVEN LOAD DISTRIBUTION.
- COVER DESIGNED FOR PARKWAY LOADING 300 P.S.F. OR TRAFFIC LOADING H-20.

ORDERING INFORMATION:

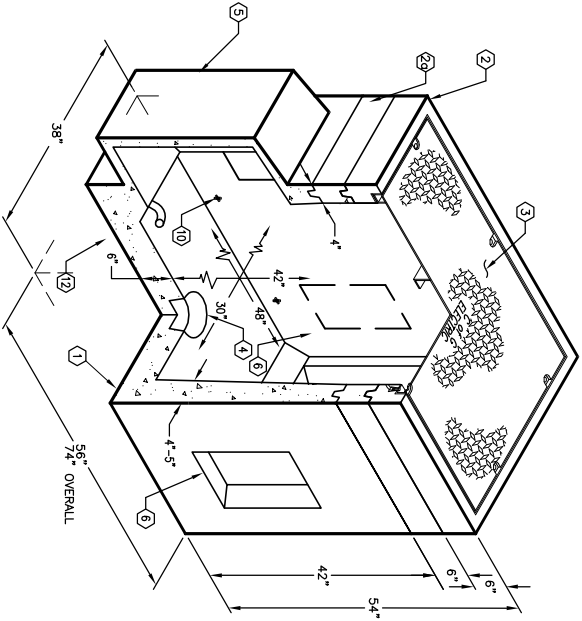
PER CITY OF GLENDALE SPECS
TOTAL WEIGHT OF ASSEMBLY IS 3,632 Lbs.

PARKWAY ASSEMBLY WITH POLYMER CONCRETE B/D COVER K3048-DP48-19P LIGHT TRAFFIC ASSEMBLY WITH STEEL B/D COVER K3048-DP48-19T

GENERAL NOTES:

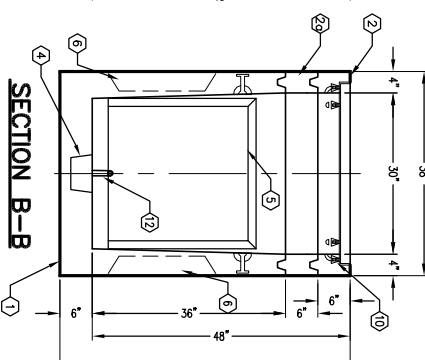
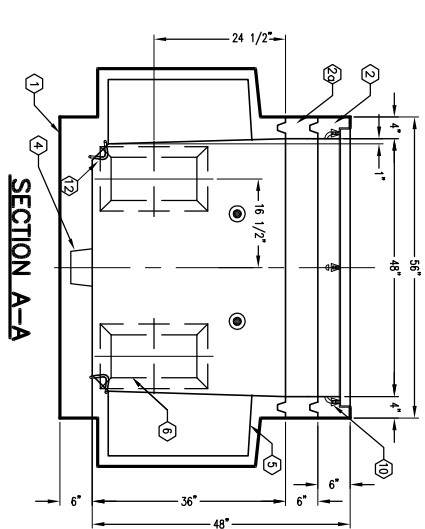
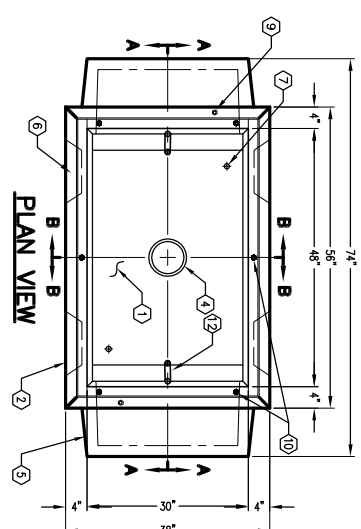
- Minimum soil bearing capacity is hereby assumed to be 2000 PSF unless otherwise documented by a geotechnical report. The soil bearing capacity of the site shall be the responsibility of the end user. Jensen Precast shall not be held responsible for the soil bearing capacity.
- Installation of Manholes, Vaults, Handholes, Meter Boxes etc. will follow Jensen installation procedures.
- Structural modification to the Jensen line of products is not permitted without prior written approval from Jensen Engineering.
- Do not seal the drawings. Verify all dimensions including rough openings, if any discrepancies are found, notify the Jensen Engineer immediately.
- The Jensen Engineer will interpret the drawings in case of possible conflict or discrepancy.
- Permissible Variations: Dimensional Tolerances - The length, width, height, or dia. measurements of the inside surfaces shall not deviate from design dimensions by more than the following: Tolerance: 0 to 5 Feet: 1/4" 5 to 10 Feet: 3/8" 10 to 20 Feet: 1/2" Between the supplier and purchaser. Squares/Tolerances: The inside of the precast concrete component shall be square as determined by diagonal measurements; the difference between such measurements shall not exceed the following: Measured Length: Allowable Difference 0 to 10 Feet: 1/2" 10 to 20 Feet: 3/4" Between the supplier and purchaser.

- PR3048D-B36-05, 36" BOTTOM SECTION, WT. 2,936 Lbs.
- PR3048-TRF, 6" TOP SECTION, W/ / F3048-PB-ANG GALV. CAST IN ANGLE FRAME, WT. 213 Lbs.
- PR3048-R6, 6" RISER SECTION - STANDARD, WT. 213 Lbs.
- 12-20-31, ONE PIECE PARKWAY POLYMER CONCRETE COVER, MARKED "C" OF G ELECTRIC.
- SC3048-TRD, ONE PIECE TRAFFIC COVER RED PRIMER, MARKED "C" OF G ELECTRIC.
- 6" x 7" DIA. SUMP x 4" DEEP. LOCATE AS FOLLOWS: BOTTOM SECTION (1) CORE MTD. 25" x 28" DUCTED, K.O. x 12" DEEP. DRAFT AS FOLLOWS: CORE MTD. 9=0". LOCATE AS FOLLOWS: 8" x 16" K.O. x 3" DEEP. DRAFT AS FOLLOWS: BOTTOM SECTION (4) SHELL MTD. LOCATE AS FOLLOWS: 1 1/2" TYP. ALL SIDES. LOCATE AS FOLLOWS: BOTTOM SECTION (2) CORE MTD. LOCATE AS FOLLOWS: BOTTOM SECTION (2) CORE MTD.
- (1) 1/2" P-35-1 INSERT. LOCATE AS FOLLOWS: TOP SECTION (2) SHELL MTD.
- (2) 1/2" P-35-1 O.B. INSERT W/CLEAN-OUT HOLE. LOCATE AS FOLLOWS: TOP SECTION (6) FRAME MTD.
- 7/8" DIA. x 9" GALV. VERTICAL PULL IRON, BOTTOM SECTION (2) CORE MTD.



MINIMUM DIMENSIONS ARE:
4'-2" x 4'-2" x 4'-0" MINIMUM

K3048-DP48-19
PER CITY OF GLENDALE SPECS
03-01-02



#	DATE	DESCRIPTION	BY
1	10-16-06	SKETCHED TO PER COVER	BB

K3048-DP48-19
PER CITY OF GLENDALE SPECS
03-01-02