

4'-0" x 4'-6" TRANSFORMER PAD x 4" THICK W/ PULL BOX

MATERIAL LIST				
ITEM	PART NO.	DESCRIPTION	CAGE NO. / LOCATE	WEIGHT/ MOUNT
1	PD4854-T4-11	TRANSFORMER PAD	CG-PD4854-T4-11(23)	743 lbs
2	55-21-006	1-5/8" x 1-5/8" UNISTRUT x 6" LG	PAD	(2) TABLE
3	55-10-830	1"DIA. GALVANIZED COIL THREADED INSERT	PAD	(1) TABLE
4	PB2436-L18-05	24" X 36" X 18" LOWER SECTION		(1) REQ'D

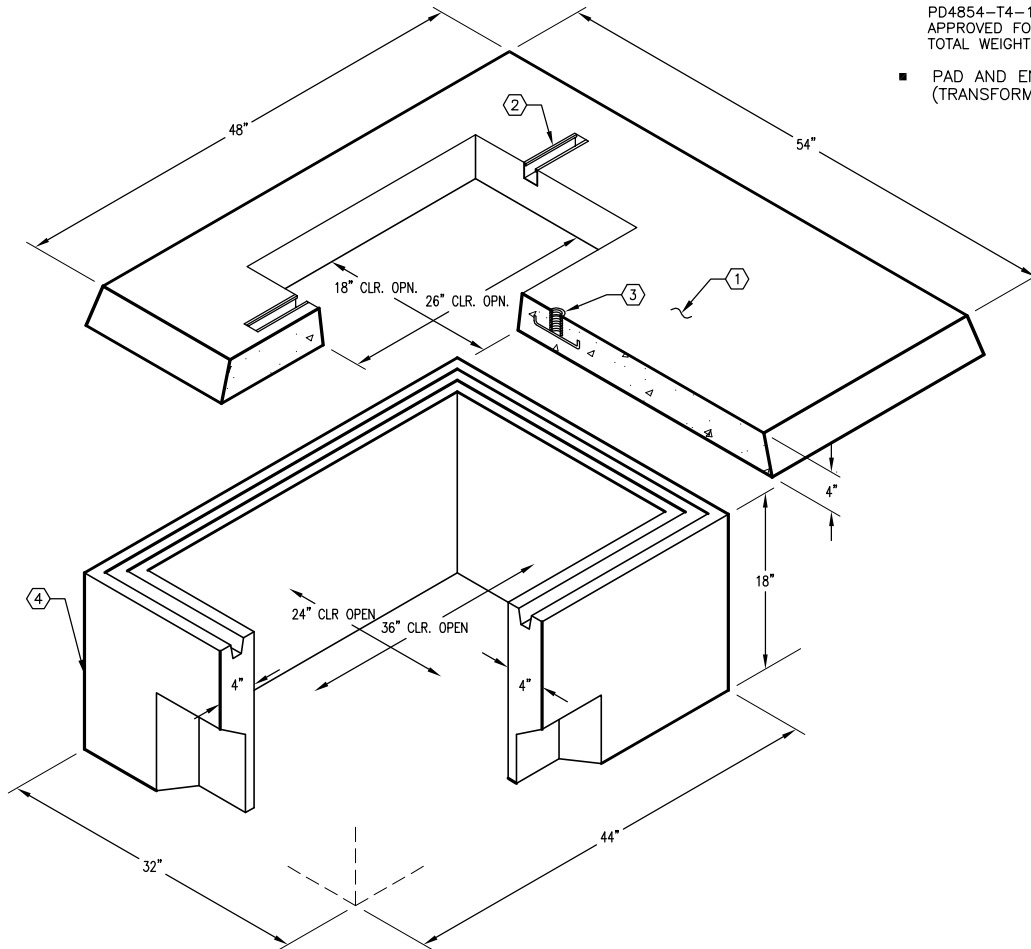
NOTES:

- PAD DESIGNED PARKWAY LOADING USING 5500 PSI [CONCRETE COMPRESSIVE STRENGTH AND 60,000 PSI YIELD STRENGTH ASTM A-706 STEEL REINFORCEMENT.

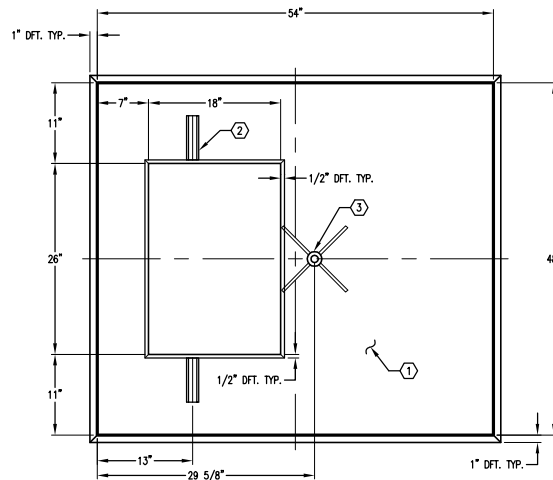
ORDERING INFORMATION:

PD4854-T4-17B FOR UNIT AS SHOWN APPROVED FOR CITY OF BURBANK-S-464G TOTAL WEIGHT OF PAD IS 743 Lbs.

- PAD AND ENCLOSURE DESIGNED FOR 3,000 LB. (TRANSFORMER) VERTICAL DEAD LOAD.



PLAN VIEW



#	DATE	DESCRIPTION	BY