

7'-0" x 10'-6" SWITCH PAD W/5'-0" x 8'-6" ENCLOSURE x 78" DEEP

MATERIAL LIST K586-SB78-17

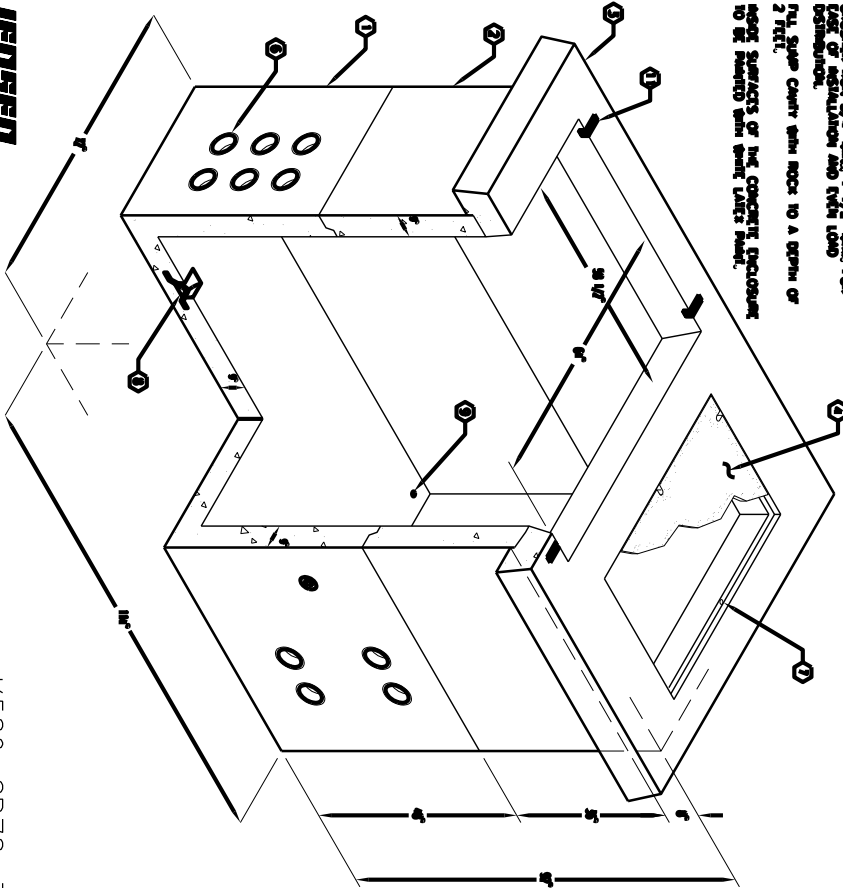
ITEM PART NO.	DESCRIPTION	PAGE NO./LOCATE	WEIGHT/MOUNT
1	RES-RES-217	42 BOTTOM SECTION - SPECIAL CARRIER ONLY	11.880 lbs
2	RES-RES-217	37 1/2" RING SECTION	0.528 lbs
3	RES-RES-217	37 1/2" RING SECTION - EAST SIDE	0.528 lbs
4	CS-2020	MARKED 40/50A HIGH VOLTAGE	3,000 lbs
5	KNOCK OUT	12" x 12" DIA. x 4" SUMP	(1) CORE
6	KNOCK OUT	12" x 12" DIA. x 4" SUMP	(1) CORE
7	55-104-08	SIZE AND LOCATIONS OF TERMINATIONS TO BE SPECIFIED	(8) CORE
8	55-38-06	1/2" PAST OPEN BOTTOM INSERTS WITH O-RINGS	(2) CORE
9	KNOCK OUT	7/8" DIA. x 6" GALV. FLUSH-PULL IRON	(4) CORE
10	KNOCK OUT	1" DIA. GROUND ROD KNOCK OUT	(4) CORE
11	BS2-30A	108" x 1.50" GALV. UNSTRUT x 4 1/2"	(1) TABLE

NOTE:

- WHAT IS REQUIRED & ACCEPTED WITH REGARD TO THE CONSTRUCTION OF THIS SWITCH PAD SHALL BE AS SHOWN ON DRAWING PER COMPANY'S STANDARD CONCRETE AND REINFORCEMENT SPECIFICATIONS AND ALL THE REINFORCEMENT PER CALC. ETC.
- WHAT IS TO BE PROVIDED BY A 1/2" x 4" SUMP OF CONCRETE SHALL BE AS SHOWN ON DRAWING PER COMPANY'S STANDARD CONCRETE AND REINFORCEMENT PER CALC. ETC.
- THE SUMP SHALL BE 1/2" DEEP FOR THE SURFACE OF THE CONCRETE ENCLOSURE TO BE FINISHED WITH SPALL TREATMENT.

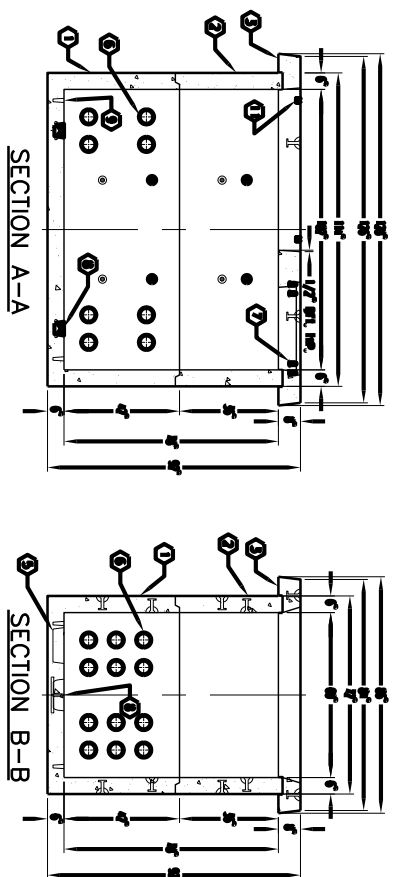
GENERAL INFORMATION:

K586-SB78-31 FOR ASSEMBLY AS SHOWN PER CITY OF ANAHEIM SPEC. 1010. TOTAL WEIGHT OF ASSEMBLY SHOWN IS 22222 lbs.

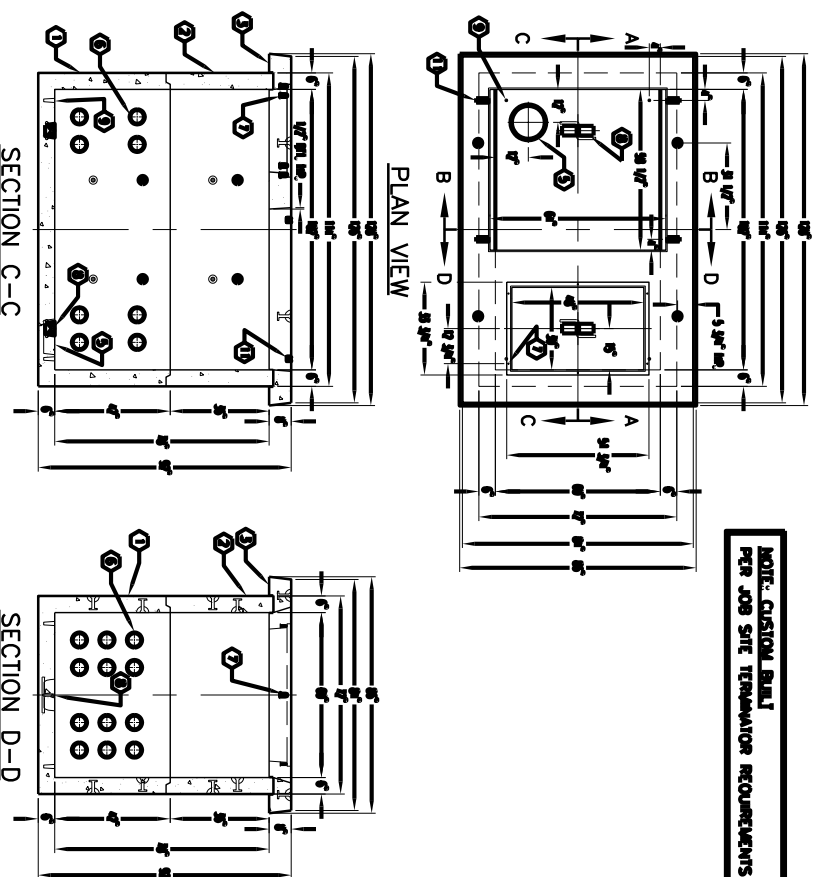


ANIMADO REL. 14

K586-SB78-31
PER CITY OF ANAHEIM SPEC. 1010
4-15-05



NOTE: CUSTOM BUILT PER JOB SITE TERMINATOR REQUIREMENTS



ITEM	DESCRIPTION	QTY
1	RES-RES-217	1
2	RES-RES-217	1
3	RES-RES-217	1
4	CS-2020	1
5	KNOCK OUT	1
6	KNOCK OUT	1
7	55-104-08	1
8	55-38-06	1
9	KNOCK OUT	1
10	KNOCK OUT	1
11	BS2-30A	1

K586-SB78-31
PER CITY OF ANAHEIM SPEC. 1010
4-15-05